



Construction Update: October 4, 2019

Web: swlrt.org

Twitter: [@SouthwestLRT](https://twitter.com/SouthwestLRT)

Construction Hotline: 612-373-3933

Systems Contract Awarded

In mid-September the Metropolitan Council awarded the systems contract for the Southwest Light Rail Transit (SWLRT) project to Aldridge-Parsons Joint Venture, based in Libertyville, Illinois and Centerville Virginia. Aldridge is experienced working on LRT corridors, having performed the systems work on Central Corridor LRT (METRO Green Line). Parsons Corporation is also no stranger to large transportation infrastructure, having worked on the I-80 SMART Corridor project in the San Francisco Bay area and the Houston METRO light rail expansion.

With the award of the systems contract, 97 percent of Southwest LRT contracts have been committed. The systems contract includes the construction and installation of equipment such as overhead catenary lines, traction power, and communication systems. It may seem like construction has just started on the project and systems work is still a few years in the future, however by awarding the systems contract now the contractor has the ability to procure materials, mobilize their workforce, and finalize their schedule. It also allows Aldridge-Parsons Joint Venture to coordinate with Lunda/McCrossan Joint Venture, the civil contractor, as some systems work will also be progressing concurrently with civil construction.

Weekly Construction Photo: Sheet Piling Operations at Blake Road Station in Hopkins



Crews continue to perform sheet piling for the regional trail underpass as part of Blake Station. Utility companies are also working in the area to prepare for construction activities.

On-going Activities Update

SouthWest Station in Eden Prairie

The temporary passenger drop-off lanes at SouthWest Transit Station have been moved to the west end of the parking structure. SouthWest Transit Station and buses are operating as usual. Pile driving in the area will be an ongoing activity as crews focus on different elements of the station site. Retaining wall work for the LRT guideway is also continuing in the area. Crews are constructing a temporary passenger waiting area for bus riders and then will demolish the current SouthWest Transit Station passenger waiting area and former offices.

Prairie Center Drive/Eden Road Area in Eden Prairie

Crews continue to perform grading and retaining wall work. Retaining walls have taken shape in the area. Utility companies are also working in the area and near Flying Cloud Drive towards the east. Crews are working around the intersection of Technology Drive and Prairie Center Drive to build support for bridge piers.

LRT Bridge at I-494/Flying Cloud Drive in Eden Prairie

The installation of sheet piling for pier construction for the new LRT bridge has begun and traffic control barriers are in place. The work on the center pier is ongoing, progressing enough for crews to pour bridge columns. The crane is being moved from the center pier over to the north abutment. The I-494 eastbound ramp to TH 212, which closed the week of August 12, will remain closed until mid-October. **See detour map below.** While traffic

control barriers will be in place, please remember to observe the posted speed limit to help ensure the safety of other motorists and our crews.

Valley View Road/Flying Cloud Drive in Eden Prairie

In the area of Flying Cloud Drive and TH 212, there is a lane restriction as work has begun on the ramp from Valley View to TH 212. Traffic is being diverted onto the HOV lane. Crews constructing bridge piers and earthwork in the area will continue for as long as weather allows.

Golden Triangle Station in Eden Prairie

Piling activities will continue in the Golden Triangle Station area. For the next week or two, work will shift to daytime activities. Night piling work will then resume and continue intermittently over the next four months as work is completed between the Golden Triangle Station north of West 70th Street to a bridge over Shady Oak Road and Hwy 212. Night work will still be necessary in some locations due to vibration sensitive businesses in the area. The Southwest LRT project worked with the contractor to develop and test various noise reduction strategies for nighttime pile driving activities, and activities are continually monitored to minimize noise levels. Residents still may be able to hear construction activities. As work progresses, the Southwest Project office will continue to look for opportunities to shift activities to the daytime.

TH 62 in Minnetonka

Preparation work for the LRT tunnel under TH 62 has begun. Crews are working on installing temporary drainage and are preparing the median for future lane shifts to consolidate both east and westbound traffic on the south side of the highway. Crews will pave next week to accommodate future traffic shifts. Expect traffic delays as periodic lane closures and traffic shifts occur. These will be ongoing activities through late October. Once traffic is shifted to the south side of the highway, LRT tunnel construction can commence. Tunnel work is anticipated to begin in late Fall.

Smetana Road in Minnetonka and Hopkins

Smetana Road from Feltl Court to Feltl Road remains closed until mid to late-October (**see detour map below**). Following this closure, Smetana Road from Feltl Road to Nolan Drive will be closed for up to a year. Signs will be posted seven days before each closure. Excavation for the Opus Station, south of this area, is ongoing.

Minnesota River Bluffs Regional Trail in Hopkins

The Minnesota River Bluffs Regional Trail in Hopkins is now closed between Shady Oak Road and 5th Avenue South. **See detour map below.**

- The section between 11th Avenue South and Shady Oak Road is closed due to storm sewer construction activities. This portion of the trail may be closed for approximately one year. Crews continue to evaluate options to reduce the duration of this closure.
- The section between 8th Avenue South and 5th Avenue South is closed until Fall 2021.

Excelsior Boulevard Area in Hopkins

Excelsior Boulevard at the freight railroad crossing closed on Friday, September 6 to all vehicle traffic and will remain closed until early November. Crews are working on underground utilities, freight rail tracks and the LRT bridge structure. Expect traffic delays in this area. **See detour map below.** Additional closures may be needed later this year or spring to complete this phase of activity. Signs will be posted seven days before each closure.

South Cedar Lake LRT Trail

The Cedar Lake Trail from just east of the North Cedar Lake Trail connection in Hopkins to France Avenue in St. Louis Park is closed in multiple segments until Fall 2021 (**see detour maps below**). The Cedar Lake Trail will remain open between France Avenue in St. Louis Park and Kenilworth Trail/Midtown Greenway intersection in Minneapolis. The Midtown Greenway will remain open. Currently, cross streets remain open to automobiles, bikes and pedestrians, with separate closure of roadways upcoming at various dates.

Blake Road in Hopkins

Crews are working to construct a tunnel for the regional trail. Blake Road southbound lanes are closed, and traffic is diverted to the east side of the road, with one lane in each direction, which will last for approximately 6 months. Once work is complete on the south-bound side of the road, work will shift to the north-bound side of the road and traffic will be diverted to the other side of the road.

Minnehaha Creek Trail Bridge in St. Louis Park

Crews have demolished the regional trail bridge that spans Minnehaha Creek in St. Louis Park. Excavation for the bridge abutments and sheet piling are beginning in the area. Flaggers will be monitoring recreational water use during times that construction activities make it unsafe to travel through the creek. Individuals using the waterway may encounter intermittent closures lasting approximately 20 minutes during construction activity.

Louisiana Avenue in St. Louis Park

Vehicle traffic is reduced to one lane in each direction as crews have shifted lanes to work on bridge abutments; expect sheet piling activity in the area. Pedestrian access across Louisiana Avenue has been restored. Another full closure of Louisiana Avenue is anticipated in mid- to late October to set bridge beams. Signs will be posted seven days prior to the closure.

TH 100 in St. Louis Park

The project will be re-positioning the existing freight rail bridge and will build a new LRT bridge over TH 100. Center bridge pier work is complete, and TH 100 traffic has been shifted back to the original alignment. Crews continue to work on the bridge abutments in the area. Barriers and associated lane-shifts will be installed in the area for abutment work next week. Expect to see fencing and erosion control work as well.

Beltline Boulevard in St. Louis Park

Work on the new Cedar Lake Trail Bridge continues. Crews are excavating for bridge abutments and performing pier work.

Kenilworth Trail Closure

The Kenilworth Trail is closed in Minneapolis at the intersection with the Midtown Greenway to just south of West 21st Street until Summer 2022. At this time, automobiles, bikes and pedestrians will cross at Cedar Lake Parkway and at W 21st Street.

Chowen Avenue to Lake Street in Minneapolis

During the week of October 7, crews will clear trees, remove brush and install fencing in the area near the open portion of the South Cedar Lake Trail. The trail will remain open, but flaggers will be on the trail to direct bike and pedestrian movements. Expect the occasional short-term delays on the trail. This work will allow for storm-sewer and watermain work to commence in the area.

Kenilworth Area Construction in Minneapolis

Crews are completing the preparation work to shift the freight track to its temporary location along the tunnel segment. The track shift is anticipated mid-October as crews work to finish earth work.

For the retaining wall south of the channel concrete work is continuing to complete the wall. Work on the retaining wall north of the channel has begun. Crews have installed the first few sheets using conventional vibratory methods and now a press-in-piler has been deployed to construct the remainder of the wall. The

press-in-piler will also be used for the tunnel in the coming months. The press-in-piler construction method is being used to minimize vibration and general disruption.

Burnham Road in Minneapolis

On August 26 crews cut into the roadway to continue watermain work and the roadway is closed to through traffic. Two-way traffic will continue to be allowed on Burnham Road Bridge during the detours. **See detour maps below.** Burnham Road will remain closed until mid-October. Crews will be paving with concrete to better tie into the existing roadway materials and help with future maintenance. However, compared to bituminous, concrete takes longer to construct and fully set before vehicle traffic can drive on it.

Cedar Lake (Kenilworth) Channel and Works Progress Administration (WPA) in Minneapolis

Bridge pier construction and piling is ongoing. Individuals using the waterway between Lake of the Isles and Cedar Lake may encounter intermittent closures lasting approximately 20 minutes during construction activity. A full closure of the Cedar Lake Channel is expected later this Fall; a 14-day advanced notification will be provided prior to a full closure.

Cedar Lake Trail in Minneapolis

The Cedar Lake trail in Minneapolis from Linden Yards located west of Van White Boulevard to east of Royalston Avenue is closed for approximately two years until mid-2021 (**see detour maps below**).

Beginning the week of October 14, for approximately one week, MnDOT will be conducting drainage and maintenance work along the Southwest LRT detour around I-394. Pedestrians and bikers will be rerouted onto Kenilworth Parkway west of I-394 until near Stadium Parkway (**see detour maps below**). The rest of the detour route remains the same.

Glenwood Avenue in Minneapolis

The closure of Glenwood Avenue between Lyndale Avenue North and 11th Street North began on July 15, 2019 and will last approximately two years. Local access to businesses will be maintained. Generally, vehicle detours will use Lyndale Avenue, Olson Memorial Highway and 7th/10th Streets. The pedestrian detour will utilize Border Avenue, Holden Street and Royalston Avenue sidewalks. **See detour map below.**

Crews will be working on Saturday, October 5 from 9:00 AM to 8:00 PM. During the week of October 7, extended hours have also been granted from 6:00 PM to 8:00 PM. High-impact construction activities, such as pile driving and sheet piling installation, will not occur past 6:00 PM.

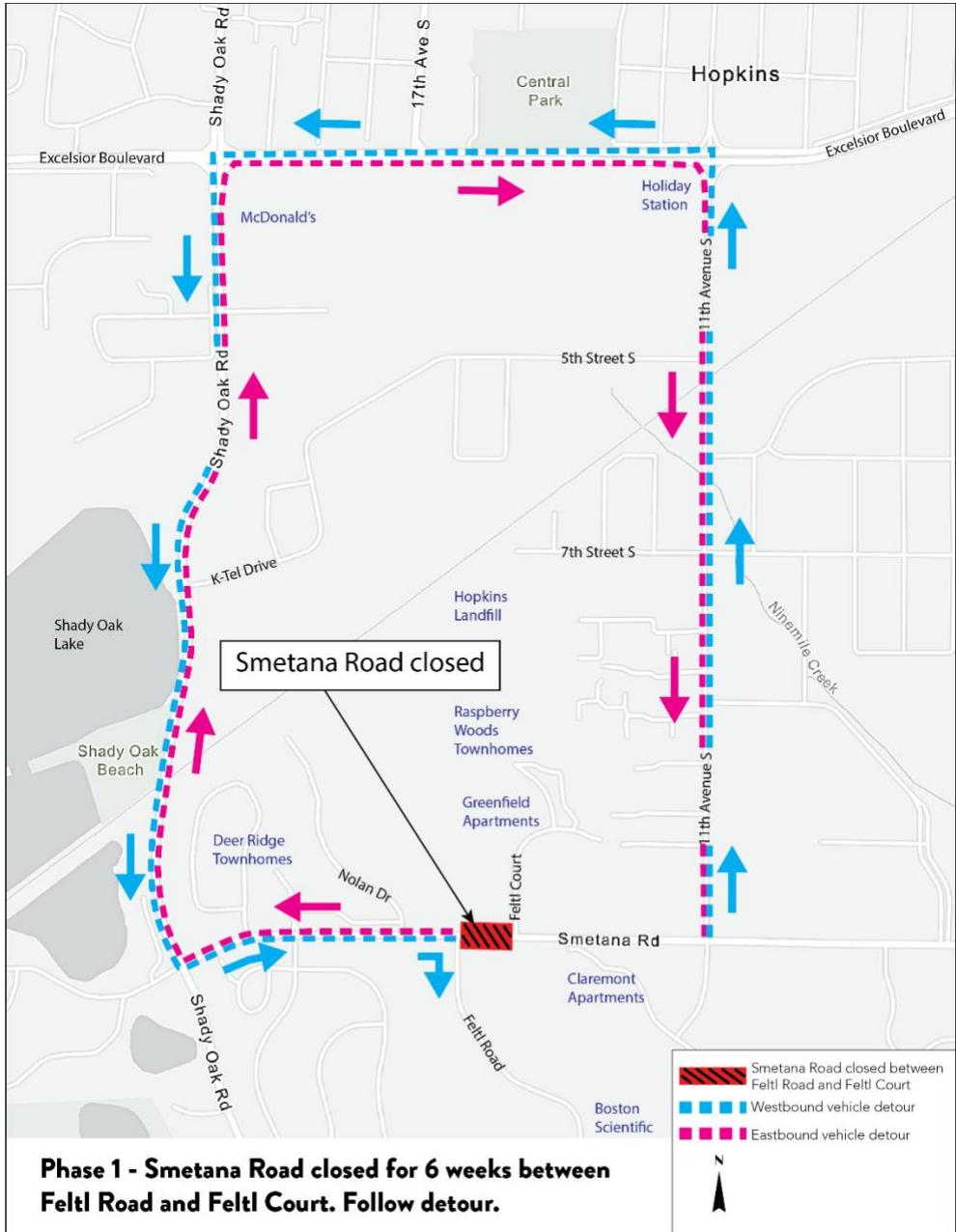
Royalston Avenue in Minneapolis

We are anticipating that work along Royalston Avenue in Minneapolis will begin in late October/early November. Crews will begin work on LRT and bridge infrastructure on the east side of the roadway.

Northbound I-494 to Eastbound TH 212 Detour



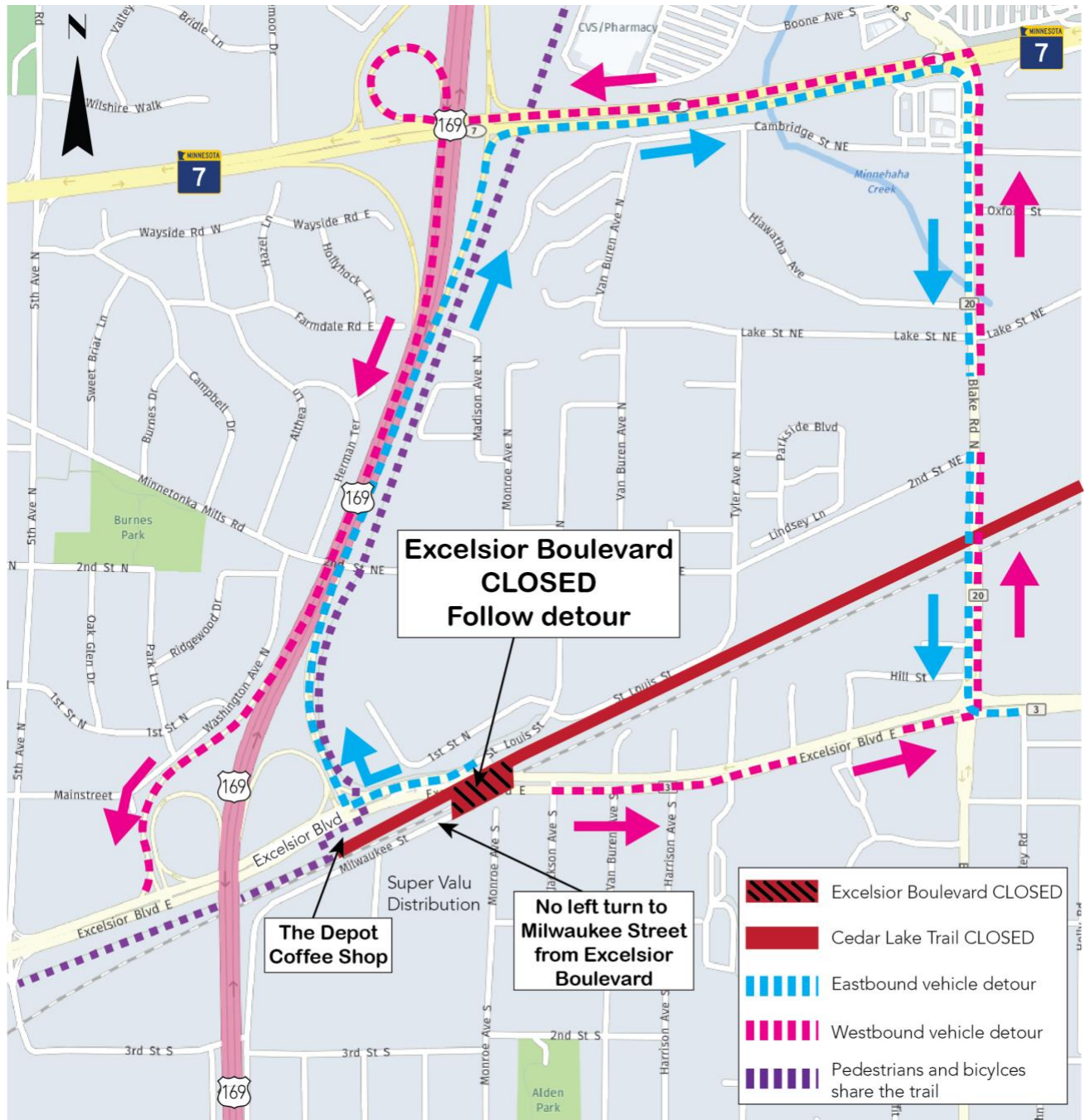
Smetana Road in Minnetonka and Hopkins Detour



Minnesota River Bluff Trail from Shady Oak Road to 5th Avenue Detour

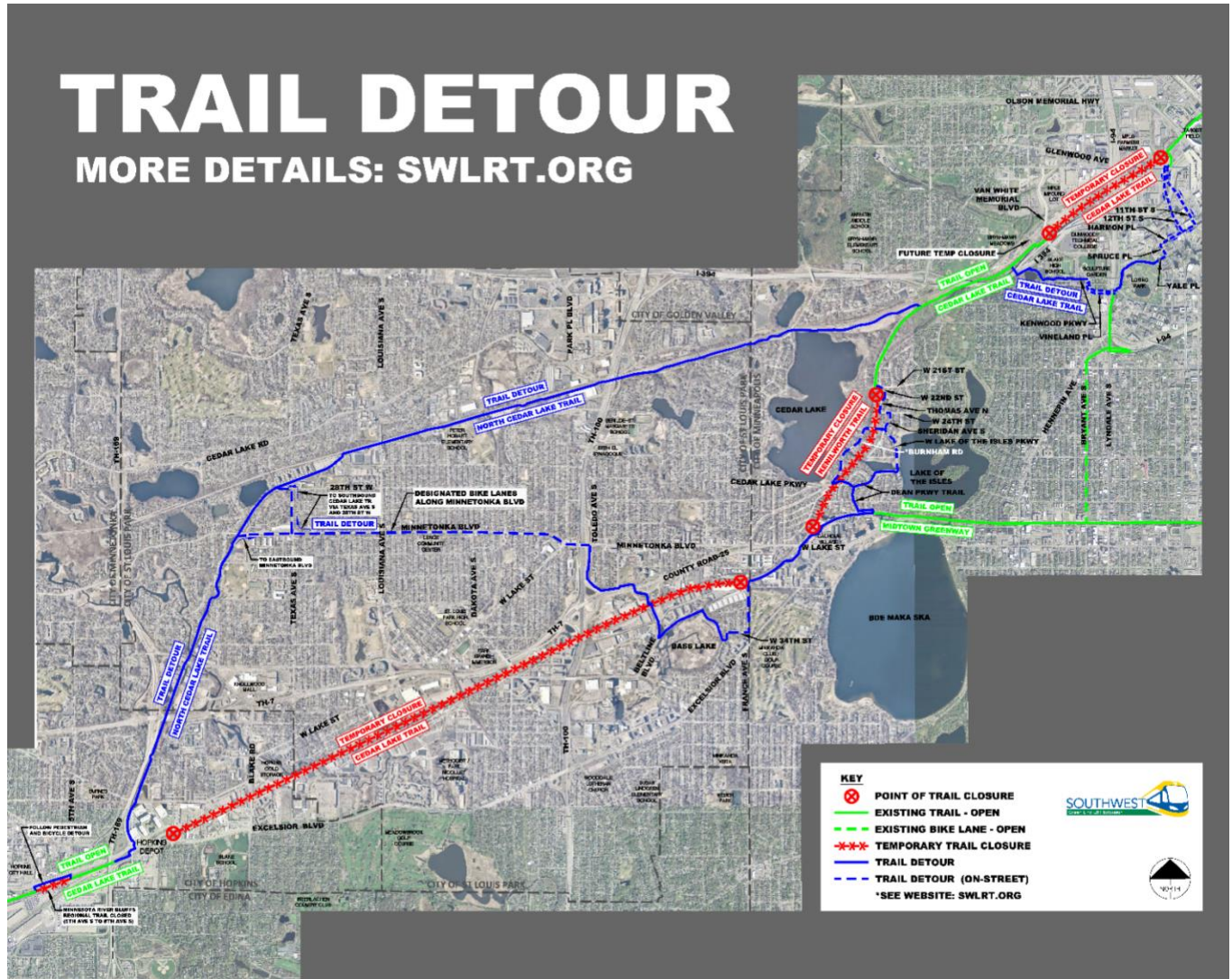


Excelsior Boulevard Detour in Hopkins

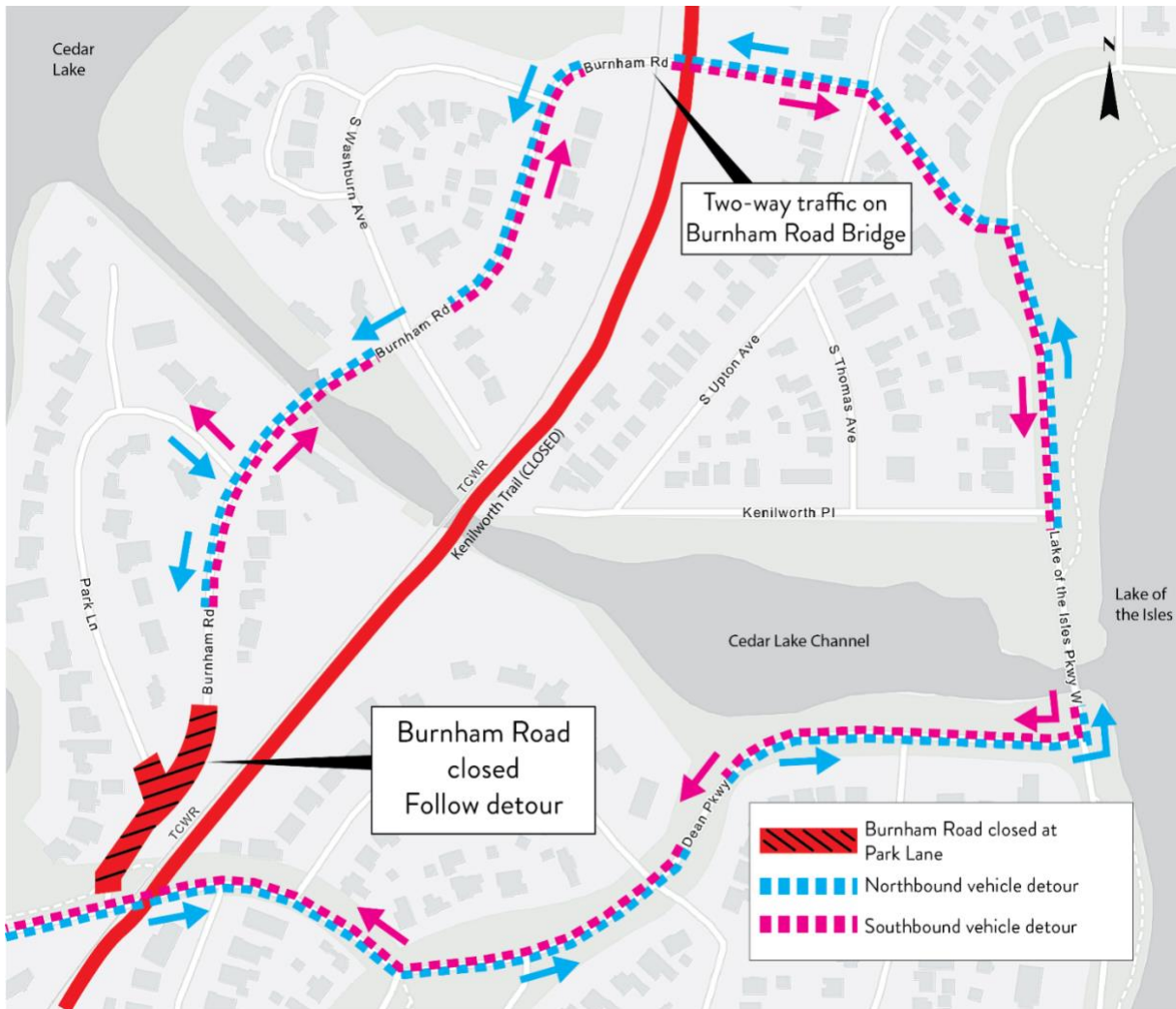


Cedar Lake and Kenilworth Trail Detours

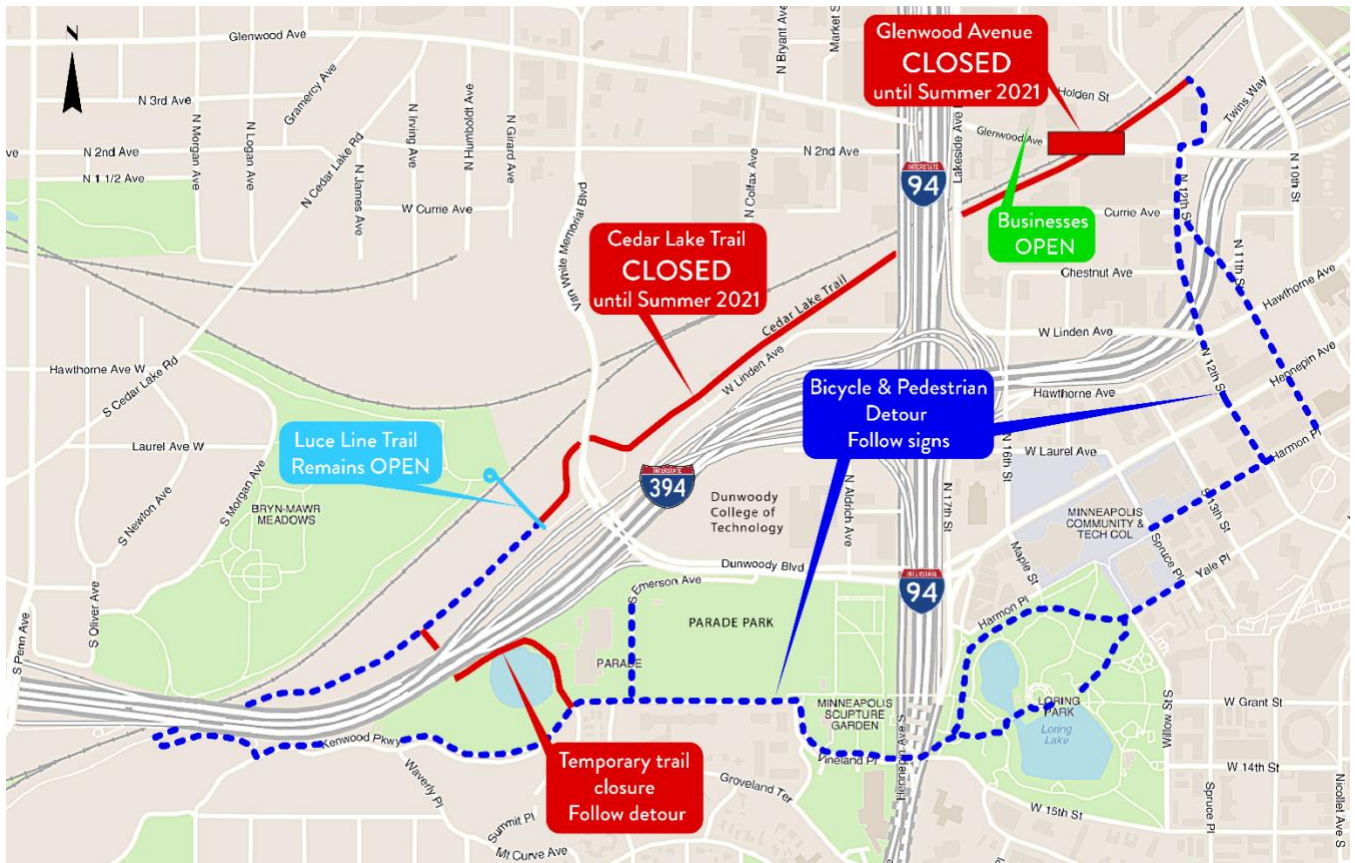
During the week of October 14, see MnDOT Detour: Cedar Lake Trail in Minneapolis detour map for routing between Kenilworth Parkway west of I-394 until near Stadium Parkway.



Burnham Road Closure at Cedar Lake Parkway in Minneapolis Detour



MnDOT Detour: Cedar Lake Trail in Minneapolis



Glenwood Avenue in Minneapolis Detour

