



Construction Update: July 5, 2019

Web: swlrt.org

Twitter: @SouthwestLRT

Construction Hotline: 612-373-3933

Crews Continue to Work

Please be mindful that crews will be working on July 5 and over the holiday weekend in some locations. Construction areas may be monitored, and trespassing is strongly discouraged. Construction work zones and active freight tracks are restricted property; entering these restricted areas create safety risks for both the trespasser and the workers.

On-going Activities Update

Corridor-wide: Eden Prairie, Minnetonka, Hopkins, St. Louis Park, Minneapolis

Conditions are changing along the corridor as work continues including survey work, staking, earth work, major utility relocation and vegetation removal with heavy equipment.

SouthWest Station in Eden Prairie: On-going

The passenger drop-off lanes for SouthWest Transit Station have been moved to the west end of the parking structure. SouthWest Transit Station and buses are operating as usual. Reconstruction of the east entrance to SouthWest Transit and surrounding businesses continues; anticipate median work and afterhours closures with access from the west entrance. Demolition of the Culver's building is complete, and crews are working to remove the concrete and asphalt. Pile driving work for utility support will begin in the area of the former Culver's site in the coming weeks. The sidewalk on the north side of Technology Drive will be closed and a pedestrian detour will be in place to the south side of Technology Drive to allow for this utility work.

LRT Bridge at I-494/Flying Cloud Drive in Eden Prairie: On-going

Traffic control is set up on I-494 and shoulder lane closures will occur to enable bridge abutment work for new LRT bridge construction over I-494 adjacent to Flying Cloud Drive. Expect heavy equipment in the area as excavation begins. Additional traffic control and traffic shifts will take place as needed to construct the bridge pier in the median of I-494.

Golden Triangle Station in Eden Prairie: On-going

Expect heavy equipment in the area. No detours, road or lane closures are anticipated for this work. Pile driving work will resume in the area on July 5 and will continue during the week of July 8, during the day.

Excelsior Boulevard Area in Hopkins: On-going

The new temporary parking lot for the Hopkins Depot is complete and opened to the public. Beginning the week of July 8, site security fencing at the original lot is anticipated to be installed. Expect traffic delays as work will intensify in this area in the coming weeks. Crews will begin to remove trail pavement and begin excavation for future bridge piers. A full closure of Excelsior at the freight railroad crossing is expected later this summer.

Cedar Lake and Kenilworth Trail Closures: On-going

The Cedar Lake Trail and Kenilworth Trail are closed for two to three years (**see detour maps below**). Since the closures were put in place in May, adjustments have been made to detour signage in St. Louis Park and Minneapolis based on trail-user feedback.

- Cedar Lake Trail: Closed through Hopkins and St. Louis Park until Fall 2021
 - The portion of the Cedar Lake Trail that closed starts just east of the North Cedar Lake Trail connection in Hopkins to France Avenue in St. Louis Park.
 - At this time, automobiles, bikes and pedestrians will continue to cross at Jackson Street, Blake Road, Louisiana Avenue, Wooddale Avenue, TH 100 and Beltline Blvd.
 - Cedar Lake Trail will remain open between France Avenue in St. Louis Park and Kenilworth Trail/Midtown Greenway intersection in Minneapolis. The Midtown Greenway will remain open.
- Kenilworth Trail: Closed in Minneapolis until Summer 2022
 - The portion of the Kenilworth Trail that closed at the intersection with the Midtown Greenway and extends northeast to just south of W 21st St.
 - At this time, automobiles, bikes and pedestrians will continue to cross at Cedar Lake Parkway and at W 21st Street.
 - Kenilworth Trail access will remain open between W 21st Street and the North Cedar Lake Trail, even though construction activities may commence in this area and trail access will be modified. The Midtown Greenway will remain open.

Upcoming Work

Minnesota River Bluffs Regional Trail in Hopkins: Week of July 8

Closure of the Minnesota River Bluffs Regional Trail in Hopkins in two short segments is anticipated beginning the week of July 8. Signs will be posted seven days before the closure to notify trail users.

- Between 11th Avenue South and Shady Oak Road, trail users will follow a pedestrian and bike detour via Shady Oak Road, Excelsior Boulevard and 11th Avenue South. This closure will last for approximately two weeks as crews establish the construction site and build temporary facilities. **See detour map below.**
- Between 5th Avenue South and 8th Avenue South, trail users will follow a pedestrian and bike detour a quarter of a block via 8th Avenue, Excelsior Boulevard and 5th Avenue. The closure will last approximately two and a half years. **See detour map below.**

Louisiana Avenue in St. Louis Park: July 17

A full road closure of Louisiana Avenue at the Cedar Lake Regional Trail is anticipated beginning July 17 as crews begin to demo the existing bridge. Signs will be posted seven days before the closure. This closure will last up to five days. Oxford Street at Louisiana remains open. Traffic moving south will detour west onto Highway 7, south onto TH 169 and back east on Excelsior Boulevard. Traffic moving north with detour west onto Excelsior Boulevard, north onto TH 169 and back east on Highway 7. **See detour map below.**

Works Progress Administration (WPA) Wall Located at the Cedar Lake (Kenilworth) Channel: Early July

Salvage work is scheduled to begin in early July. This work includes manual and mechanical excavation in sections. This work may take up to 4 months depending on the condition of the wall and preservation protocols. The channel will remain open for recreational use but will be narrowed to approximately 25 feet during this work. A full closure of the channel is expected later this summer; a 14-day advanced notification will be provided prior to a full closure.

Glenwood Avenue in Minneapolis: July 15

Full road closure between Lyndale Avenue North and 11th Street North is anticipated July 15 for approximately two years; local access to businesses will be maintained. Generally, vehicle detours will use Lyndale Avenue, Olson Memorial Highway and 7th/10th Streets. Pedestrian detour will utilize Border Avenue, Holden Street and Royalston Avenue sidewalks. **See detour map below.** Advanced detour signage will be posted seven days before the closure.

Cedar Lake Trail Minneapolis: July 15

The Cedar Lake Trail in Minneapolis from Linden Yards located west of Van White Boulevard to east of Royalston Avenue is anticipated to close July 15, in conjunction with the closure of Glenwood Avenue and will be closed for

approximately two years. Detour signage will notify trail users of alternative routes which have been designed in coordination with members of the biking community and project partners. **See detour map below.**

Upcoming Roadway Closures: To give people advanced notice the table below includes a list of planned closures. Detour signage will be in place seven days prior to closure to give notice of the actual closure date. As more information is available, we will include in weekly updates.

Community	Roadway	Anticipated Timeframe	Approx. Duration
Eden Prairie	PARTIAL CLOSURE of eastbound ramp (down to one lane) from Valley View Road to TH 212	Early July	3 – 4 weeks
Hopkins	FULL CLOSURE of Excelsior Boulevard at the intersection of Jackson Avenue North and Milwaukee Street	Late Summer	Two, 2-week closures (approx. 28 days total)
Hopkins	FULL CLOSURE of Blake Road at the Cedar Lake Trail and freight rail crossing	Late Summer	Up to 2 weeks
St. Louis Park (see detour map)	FULL CLOSURE of Louisiana Avenue at the Cedar Lake Trail	July 17	Up to a 5 day closure
Minneapolis (see detour map)	PARTIAL CLOSURE of Burnham Road from Cedar Lake Parkway to Park Lane (approx. 800 ft); two-way traffic allowed on Burnham Road Bridge during detour	Rescheduled to Mid-July	30 days
Minneapolis (see detour map)	FULL CLOSURE of Glenwood Avenue between Lyndale Avenue North and 11th Street North	July 15	2 years

Meetings and Events

Project staff will host pop-up events and attend community events to share upcoming construction information with residents, businesses and trail users. Follow us on Twitter (@SouthwestLRT) for the latest information.

Staff will be providing project information and answer questions at the following pop-ups.

- Tuesday, July 9: SouthWest Transit Station; 6:30 – 8:30 AM
- Tuesday, July 9: SouthWest Transit Station; 3:30 – 6:30 PM
- Wednesday, July 10: SouthWest Transit Station; 6:30 – 8:30 AM
- Wednesday, July 10: SouthWest Transit Station; 3:30 – 6:30 PM

In July the Southwest LRT project office will host open houses from 4:30 – 7:00 PM on the following dates:

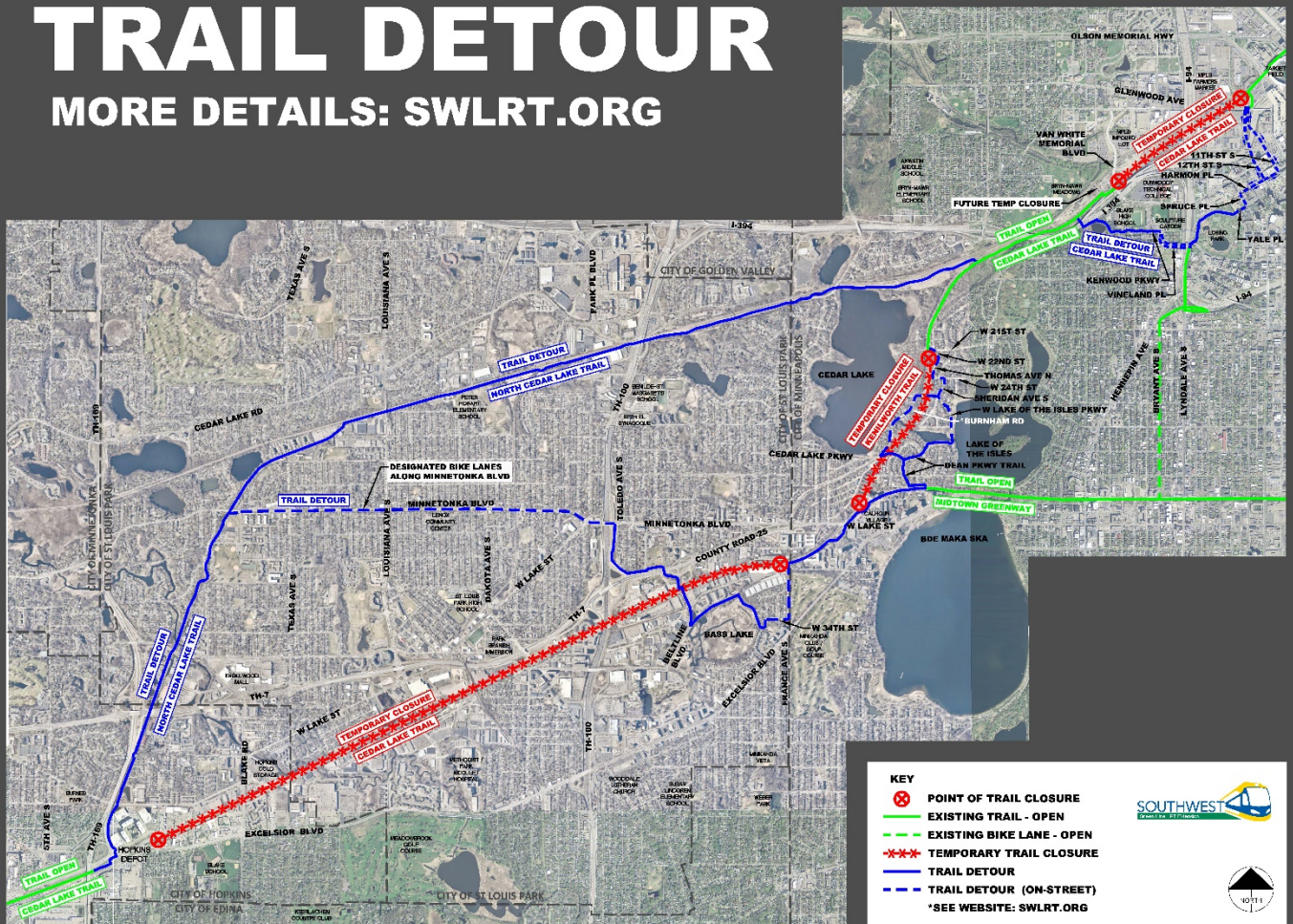
- Tuesday, July 16: St. Louis Park City Council Chambers
- Thursday, July 18: Eden Prairie City Center, Heritage Room
- Monday, July 22: Eagle Ridge Academy School Cafeteria, Minnetonka
- Tuesday, July 23: Bryn Mawr Elementary School Cafeteria, Minneapolis
- Thursday, July 25: Hopkins Depot, Railroad Room

See the Southwest LRT Public Involvement page for more detail: swlrt.org

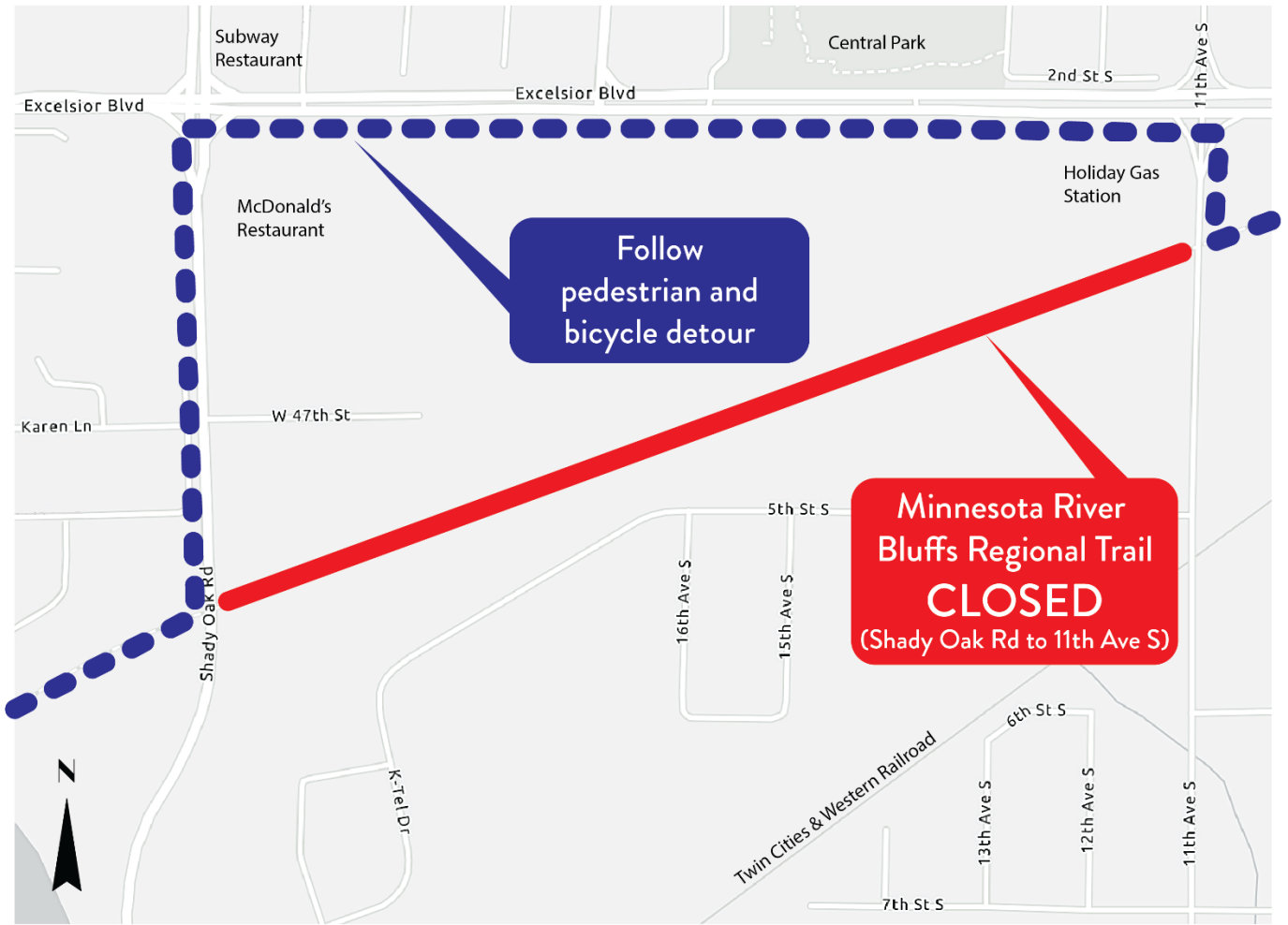
Cedar Lake and Kenilworth Trail Detours

TRAIL DETOUR

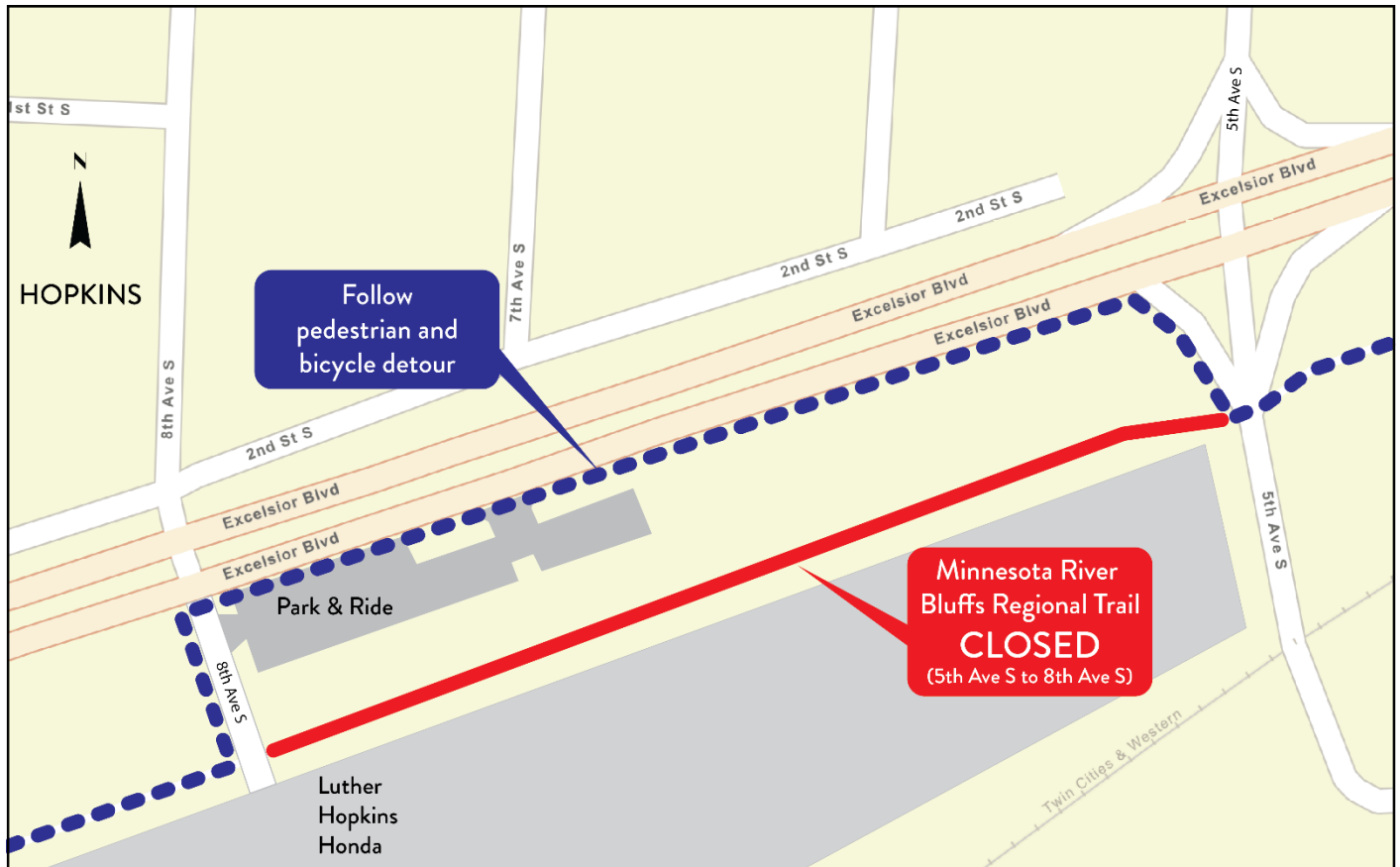
MORE DETAILS: SWLRT.ORG



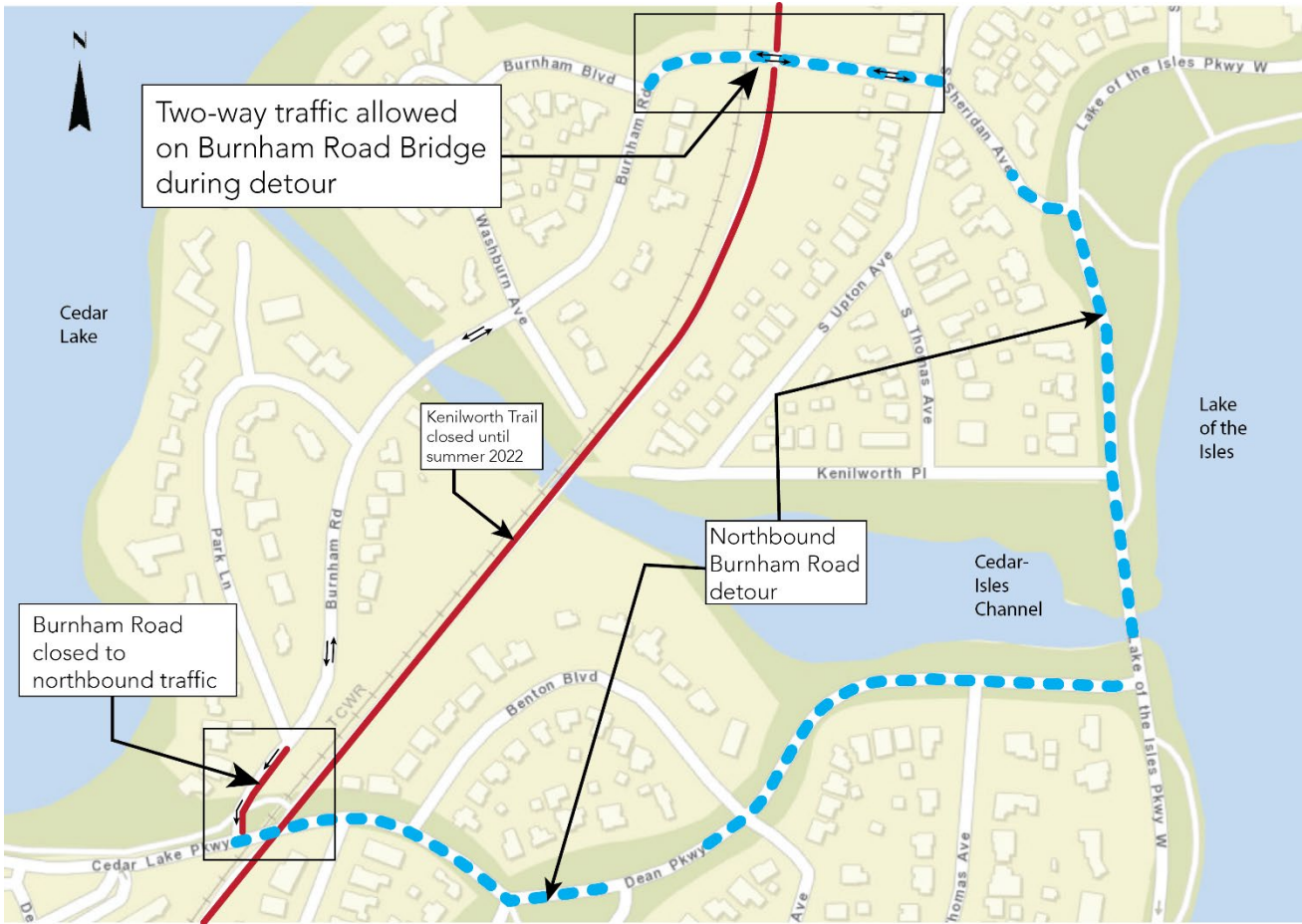
Minnesota River Bluffs Regional Trail Shady Oak to 11th in Hopkins Detour Map



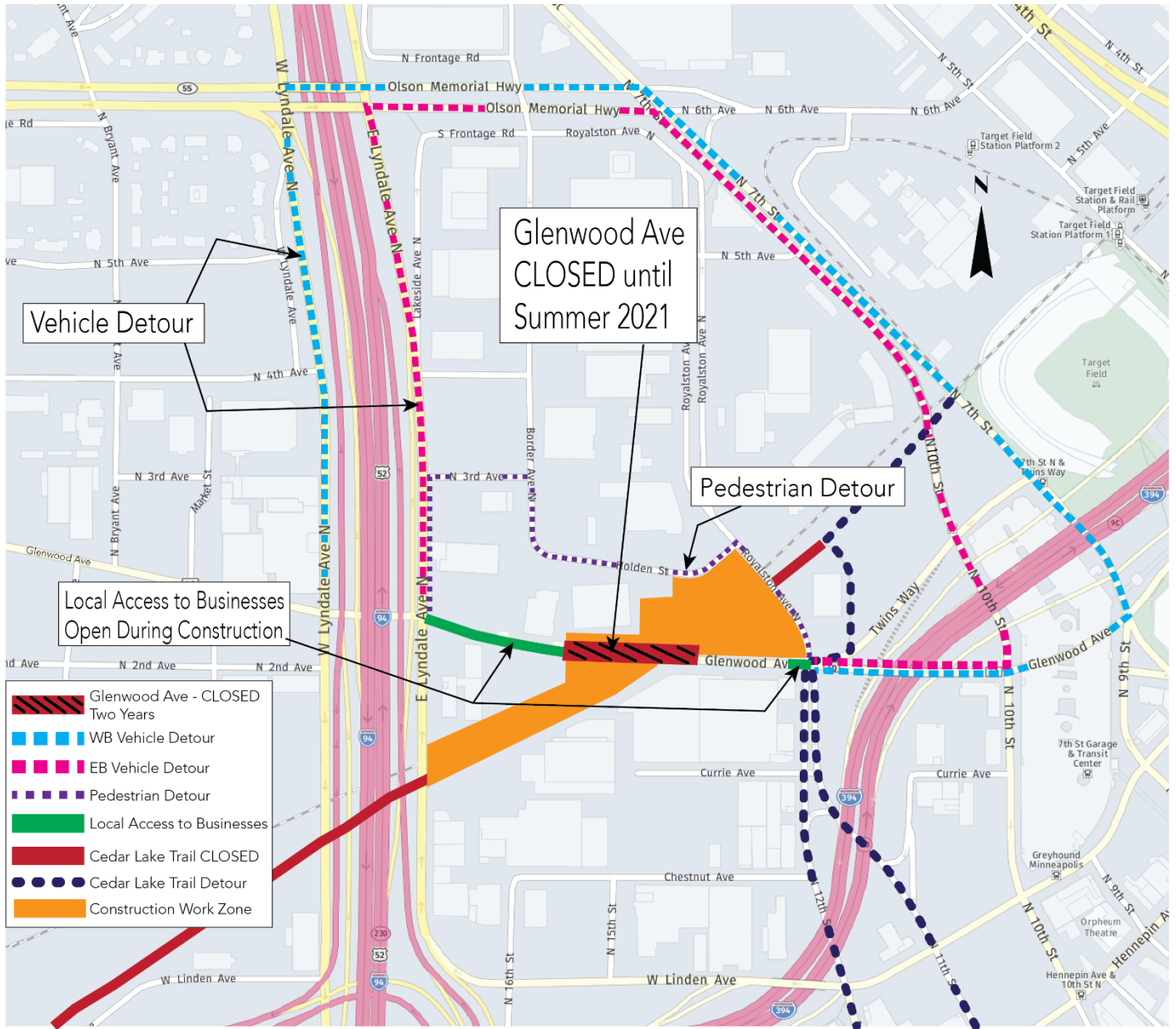
Minnesota River Bluffs Regional Trail 8th Avenue to 5th Avenue in Hopkins Detour Map



Burnham Road Partial Closure at Cedar Lake Parkway in Minneapolis Detour Map



Glenwood Avenue in Minneapolis Detour Map



Cedar Lake Trail Minneapolis Detour Map

