



SOUTHWEST LRT
community works

green means go.

connecting people to jobs, housing, shopping, and fun.

Southwest Light Rail Transit (LRT)

“A corridor of opportunity”



SOUTHWEST
light rail transit

Minneapolis Jobs: 151,200
Suburban Jobs: 72,400

Downtown
Minneapolis
147,000 emp.*

West Calhoun
4,200 emp.

Beltline
Business Park
6,000 emp.

Excelsior & Grand
Park Nicollet
1,000 emp.

Methodist
Hospital
5,200 emp.

East End Hopkins
(Cargill, Supervalu)
5,000 emp.

K-Tel Drive
Industrial Park
3,500 emp.

Opus
Business Park
11,000 emp.

Proposed United
Health Group Campus
6,700 emp.

Highway 212
Corridor
16,000 emp.

Golden Triangle
Business Park
18,000 emp.

***Figures represent current employment estimates.**

| | | | |
|--|-------------------------------|--|-------------------------|
| | Locally Preferred Alternative | | LRT Station |
| | Trails | | LRT Park & Ride Station |
| | Existing Freight Lines | | Hiawatha & Central LRT |

NORTH
 Scale (in miles)
 0 0.5 1.0 2.0



SOUTHWEST LRT

community works

green means go.

connecting people to jobs, housing, shopping, and fun.

- **Projected to serve 30,000 passenger trips/day (2030)**
- **Connects job centers**
(downtown Mpls & Opus/Golden Triangle, Cargill, Methodist Hospital)
- **Serves community amenities**
(Chain of Lakes, Shady Oak Lake, Hopkins Depot Coffee House, Hopkins Arts Center, Excelsior & Grand, Knollwood Mall, Eden Prairie Center, Target Field)
- **Provides a new critical link in the regional transit system**
(serves North Mpls residents via Royalston station, St. Paul residents via interlining with Central)
- **High reverse commute ridership at over 7,000 trips/day**
- **Strong opportunity for development/redevelopment**



SOUTHWEST LRT
community works

green means go.

connecting people to jobs, housing, shopping, and fun.

Hennepin Community Works was created in the mid 1990s

Mission

To enhance how the communities of Hennepin County work together to create good jobs, provide access to employment, and build the long term value of communities by investing in infrastructure, public works, parks, and the natural environment and by improving the existing implementation systems.

Principles

- Stimulate employment development
- Build bridges for effective planning and implementation
- Maintain and improve natural systems
- Strengthen communities through connections
- Enhance the tax base

EDEN PRAIRIE ■ MINNETONKA ■ EDINA ■ HOPKINS ■ ST. LOUIS PARK ■ MINNEAPOLIS
Metropolitan Council Minneapolis Park & Recreation Board Minnehaha Creek Watershed District SouthWest Transit ULI-MN





SOUTHWEST LRT

community works

green means go.

connecting people to jobs, housing, shopping, and fun.

Southwest LRT Community Works Vision

The Southwest LRT corridor: connecting people to jobs, housing, shopping, and fun.

The Southwest Community Works Initiative collaborates with citizens, businesses, and government to align land use and transit planning so that the Southwest LRT Corridor is a premiere destination that is

· accessible · livable · vibrant

Economic competitiveness and job growth

Promoting opportunities for business and employment growth

Housing choices

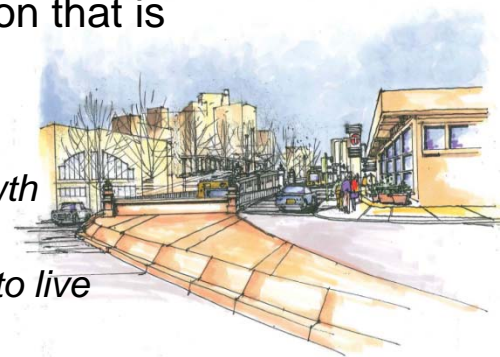
Positioning the Southwest LRT communities as a place for all to live

Quality neighborhoods

Creating unique, vibrant, safe, beautiful, and walkable station areas

Critical connections

Improving affordable regional mobility for all users



EDEN PRAIRIE ■ MINNETONKA ■ EDINA ■ HOPKINS ■ ST. LOUIS PARK ■ MINNEAPOLIS

Metropolitan Council Minneapolis Park & Recreation Board Minnehaha Creek Watershed District SouthWest Transit ULI-MN

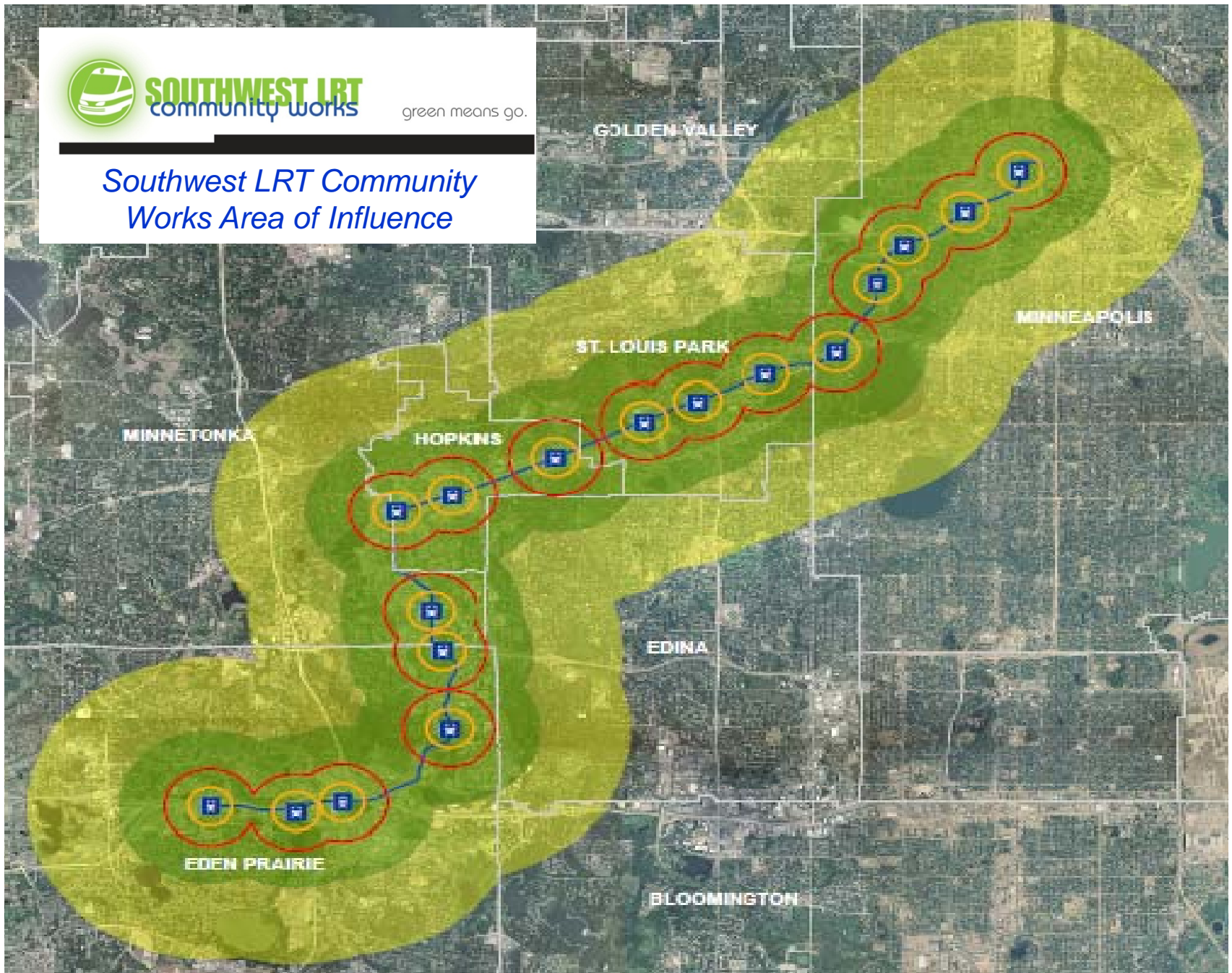




SOUTHWEST LRT
community works

green means go.

Southwest LRT Community Works Area of Influence





SOUTHWEST LRT

community works

green means go.

connecting people to jobs, housing, shopping, and fun.

Corridors of Opportunity (CoO)

Regional initiative to promote sustainable, vibrant, and healthy communities using the region's emerging transitway system as a development focus and the combined funds of the [Living Cities Integration Initiative](#) and [Sustainable Communities Regional Planning Grant](#).

Corridors of Opportunity Vision

Transitway corridors will guide our region's growth, vitality, and competitiveness. Development along transitways will create distinctive places and strengthen local assets while increasing ridership and expanding access to jobs, affordable housing, and essential services for residents of all incomes and backgrounds.



EDEN PRAIRIE ■ MINNETONKA ■ EDINA ■ HOPKINS ■ ST. LOUIS PARK ■ MINNEAPOLIS

HENNEPIN COUNTY REGIONAL RAILROAD AUTHORITY - SPONSOR





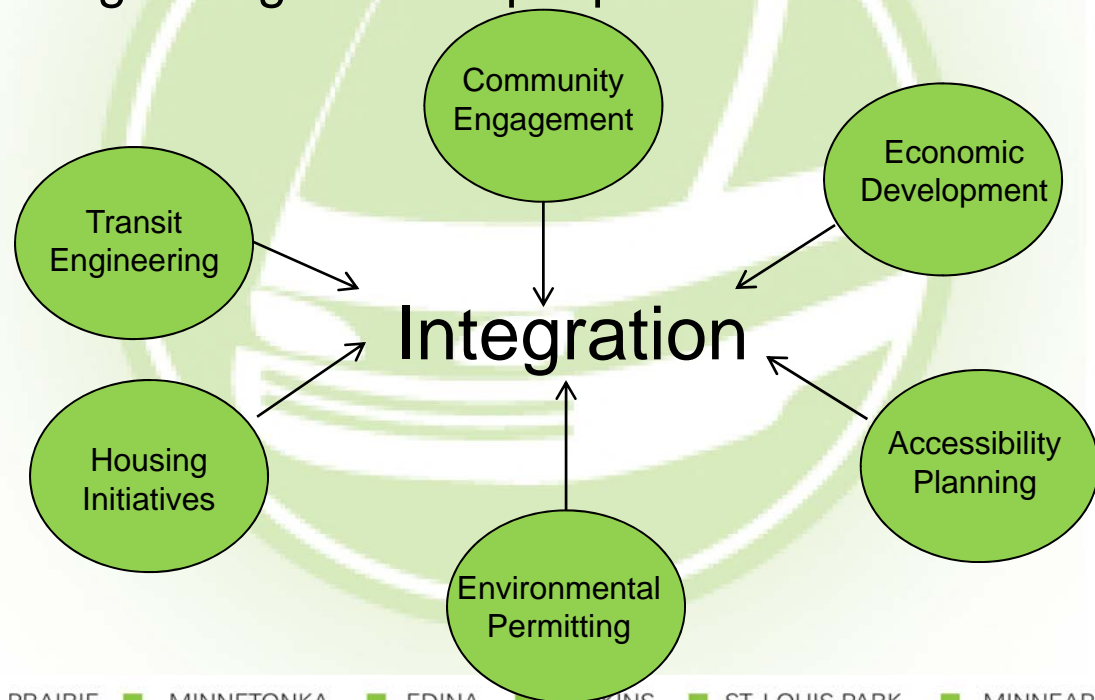
SOUTHWEST LRT community works

green means go.

connecting people to jobs, housing, shopping, and fun.

Corridors of Opportunity (CoO)

Better align/integrate multiple processes to achieve shared goals





SOUTHWEST LRT
community works

green means go.

connecting people to jobs, housing, shopping, and fun.

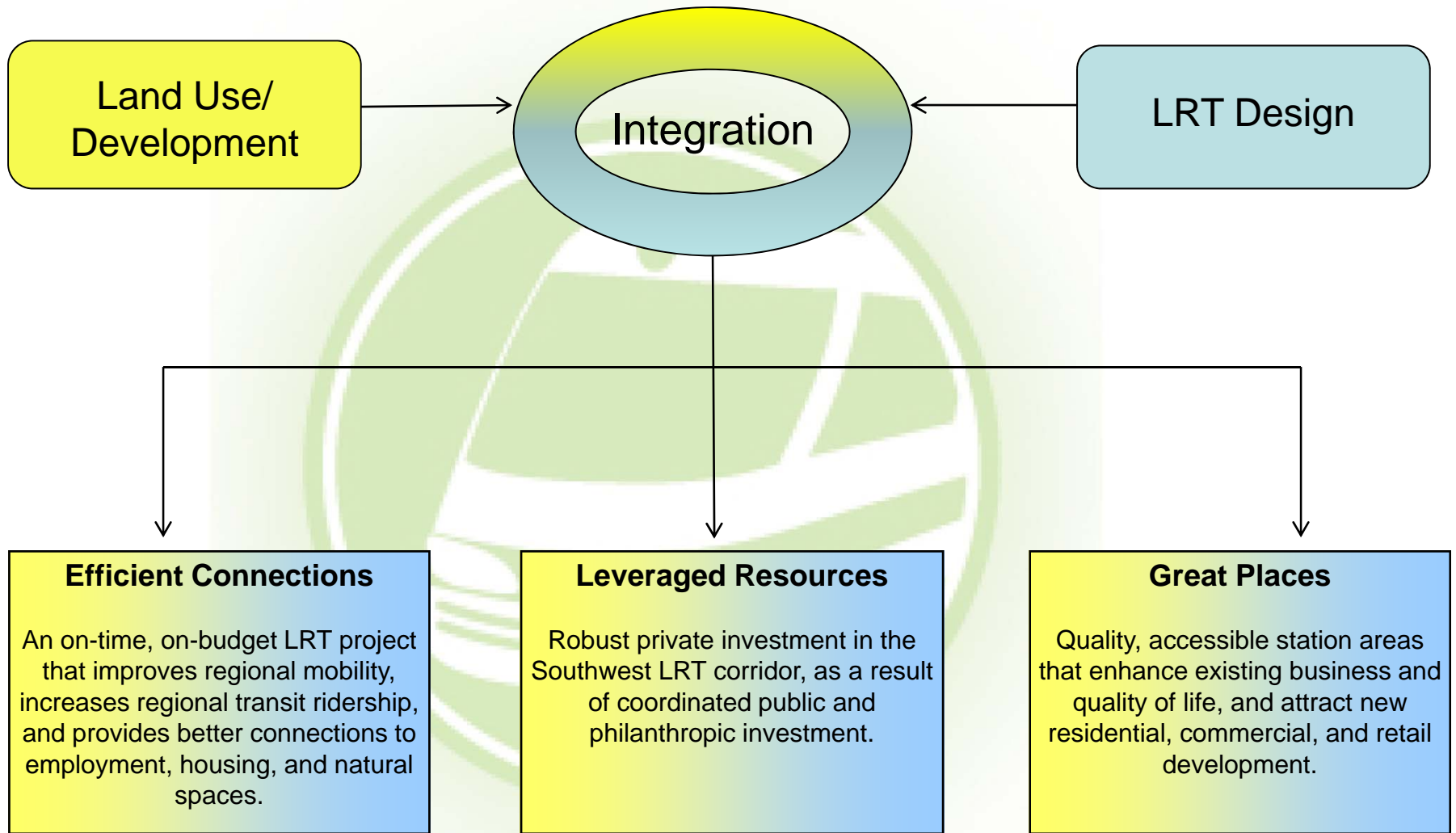
Southwest Corridor

As part of the **CoO**, the Southwest LRT project will become a **model** for the nation on the systematic **integration** of land use planning & LRT design.

- On-site “Design Exchange” to facilitate two-way exchange of accurate & timely information
- Assistant Project Director for Land Use/Community Works housed within the Southwest Project Office (SPO)
- Share committee structure
- Cross Discipline/Cross Jurisdictional Workshops & Training (*EPA Parking Audit, LRT/Development Workshop*)
- Station Design Charrette Process



Land Use/Development & LRT Design Integration





SOUTHWEST LRT community works

green means go.

connecting people to jobs, housing, shopping, and fun.

2011-2013 Workplan

2011

- ✓ Organizational Structure
- ✓ **Infrastructure** Inventory (current & 2030)
- ✓ Development **Market** Assessment
- ✓ Station **Typologies**

2012/2013

- Formalized Structure for Land Use/Development **Integration** with LRT Engineering
- Corridor Wide **Housing** Strategy
- Development/Redevelopment **Tools/Barriers/Solutions**
- Transitional Station Area Action Plans (**TSAAP**)
(Station Area Park & Ride/Platform Alternatives, Access/Circulation, Infrastructure Needs, Community Engagement, Stormwater Management)
- Station Area **Design Charrettes**
- Corridor Development **Finance** Strategy
- Identify Key Development **Opportunity Sites**
- **Workforce & Business Growth** Plan
- Corridor Wide **Investment Plan**

EDEN PRAIRIE ■ MINNETONKA ■ EDINA ■ HOPKINS ■ ST. LOUIS PARK ■ MINNEAPOLIS

Metropolitan Council Minneapolis Park & Recreation Board Minnehaha Creek Watershed District SouthWest Transit ULI-MN





SOUTHWEST LRT
community works

green means go.

connecting people to jobs, housing, shopping, and fun.

For more information on
Southwest LRT Community Works
(beyond the rails),
please visit

www.southwesttransitway.org

