

SOUTHWEST

Green Line LRT Extension



# Community Advisory Committee

February 28, 2017



# Today's Topics

- Project Update
- Community Advisory Committee Recap



# Project Update

# Major Project Milestones

Element	Timeframe
Complete Civil Construction Package	January 2017
Civil Construction Invitation for Bids	February 14, 2017
Complete Systems Construction Package	March 2017
Complete OMF Construction Package	May 2017
Anticipated Start of Civil Construction	Q3 2017
Anticipated Start of Systems Construction	Q3 2017
Anticipated Start of OMF Construction	Q3 2017
Full Funding Grant Agreement	Mid 2017
Heavy Construction	2017-2020
Revenue Service	2021

# Civil Construction Contract Status

- Invitation for Bids (IFB) Issued on February 14
- Pre-bid meeting scheduled for March 3
- Bids due May 2



# DBE Meet and Greet: March 3

- Networking opportunity to learn about potential partnering opportunities
- Prime contracting teams conduct brief interviews with prospective DBE subcontractors & suppliers
- DBE firms are encouraged to attend the pre-bid meeting



# LRT Build Program

- 10 week pre-apprentice training program
  - 4 wks. job readiness training
  - 4 wks. core construction training
  - 2 wks. hands-on training
- Funding provided by:
  - McKnight Foundation \$100,000
  - Hennepin Carver Workforce Innovation Act \$150,000





# LRT Build Program

- Provides opportunities to meet with unions & contractors working on SWLRT
- Trades: iron workers, masons, carpenters, operating engineers, construction laborers



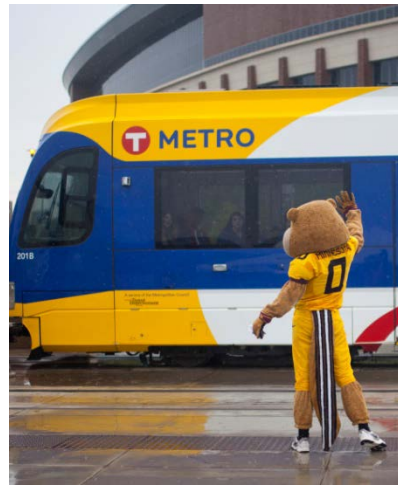


# Community Advisory Committee Recap

# LRT Projects Are Complex

- Project elements
  - Guideway
  - Stations and station access
  - Park and ride facilities
  - Pedestrian/bike facilities
  - Connecting bus facilities
  - Roadway facilities
  - Operation and maintenance facilities
  - System elements
  - Public space/art
  - Landscaping

# Transit Projects Engage Many Stakeholders



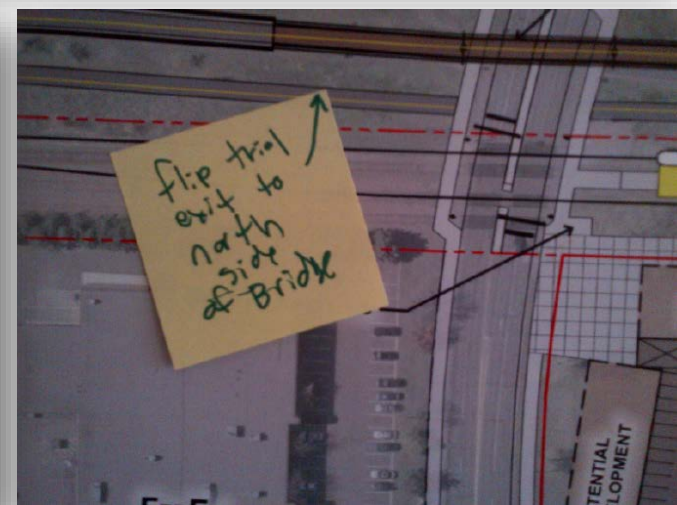
# Transit Projects Take Time

	2011	2012	2013	2014	2015	2016	2017	2018	2019	2020	2021
Project Development	Active	Active	Active	Active	Active	Active	Completed	Completed	Completed	Completed	Completed
Engineering	Completed	Completed	Completed	Completed	Completed	ROD	Active	Completed	Completed	Completed	Completed
Construction	Completed	Completed	Completed	Completed	Completed	Completed	FFGA	Active	Active	Active	Completed
LRV Production & Testing	Completed	Completed	Completed	Completed	Completed	Active	Active	Active	Active	Active	Active
Fare Collection Production & Testing	Completed	Completed	Completed	Completed	Completed	Completed	Completed	Completed	Active	Active	Active
Integration Testing	Completed	Completed	Completed	Completed	Completed	Completed	Completed	Completed	Completed	Active	Active
Revenue Operations	Completed	Completed	Completed	Completed	Completed	Completed	Completed	Completed	Completed	Completed	Active



# CAC Accomplishments

- Formed April 2012
  - 37 meetings
  - 92 members over CAC tenure
- Advised on:
  - 23 Technical Issues



# CAC Accomplishments

- 23 Technical Issues including;
  - Eden Prairie Alignment
  - Freight Rail Co-location/Relocation
  - Operations and Maintenance Facility siting

# SWLRT Project Development Technical Issues

Revision 04: 28 May 2013

## Technical Issues:

1. Eden Prairie Alignment
2. Nine Mile Creek Crossing
3. Golden Triangle Station
4. Shady Oak Road & TH 212 Crossing
5. City West Station & TH 62 Crossing
6. Opus Station
7. Opus Hill/Minnetonka-Hopkins Bridge
8. Shady Oak Station

9. PEC West/PEC East Interface Point

10. Downtown Hopkins Station
11. Excelsior Blvd. Crossing
12. Blake Station
13. Louisiana Station
14. Wooddale Station
15. TH 100
16. Beltline Station
17. West Lake Station
18. Kenilworth Corridor
19. Bassett Creek Valley Corridor
20. Royalston Station/Interchange Project Coordination
21. Freight Rail Co-location/Relocation Alternatives

 PEC West

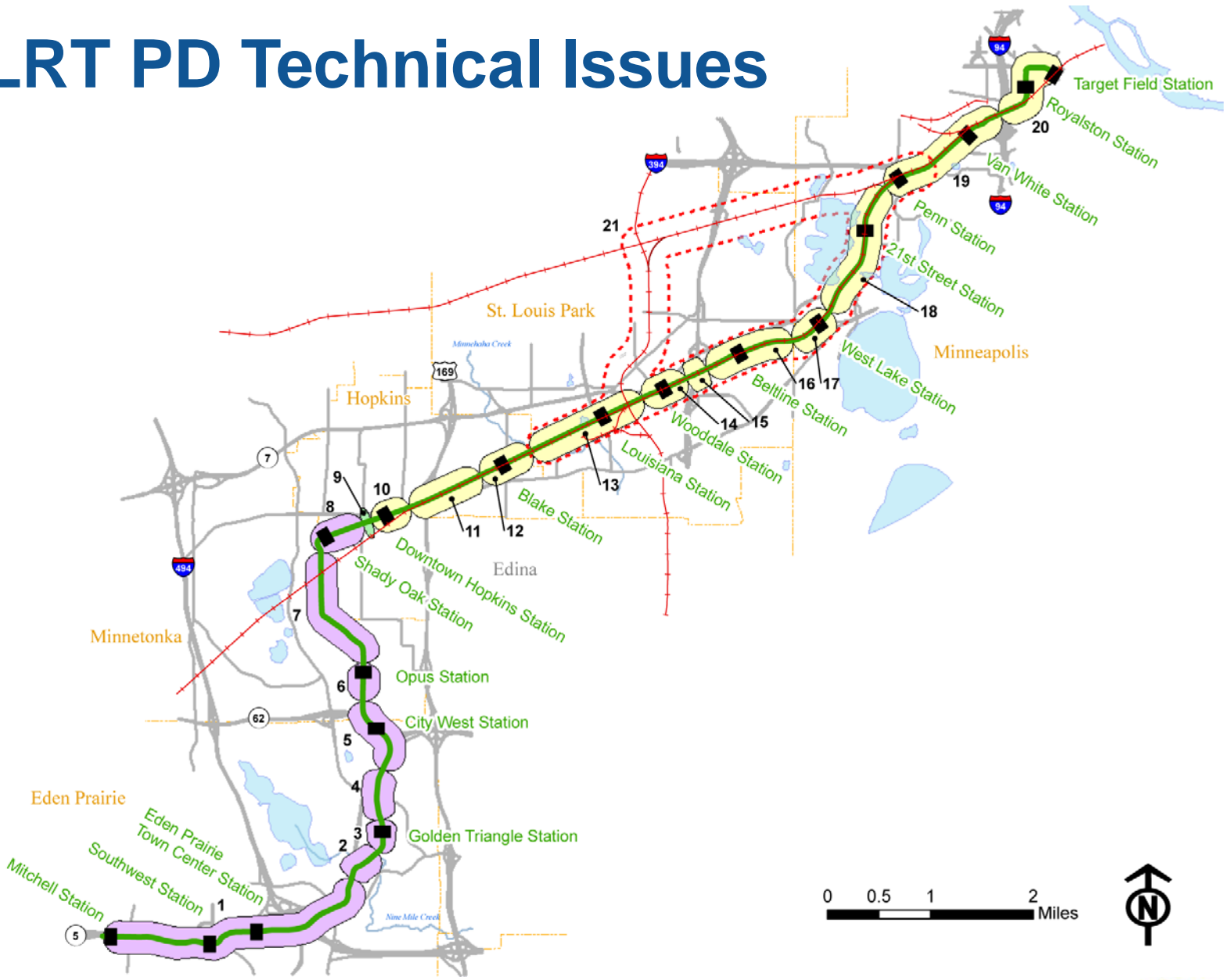
 PEC East

 Joint PEC West/PEC East

## System-wide Technical Issues (not shown):

22. Traction Power Substation and Signal Bungalow Locations
23. Operation & Maintenance Facility (OMF) Location
24. Park & Ride, Kiss & Ride and Bus Layover Locations
25. Trails and LRT Interface Coordination

# SWLRT PD Technical Issues





# SWLRT OMF Siting

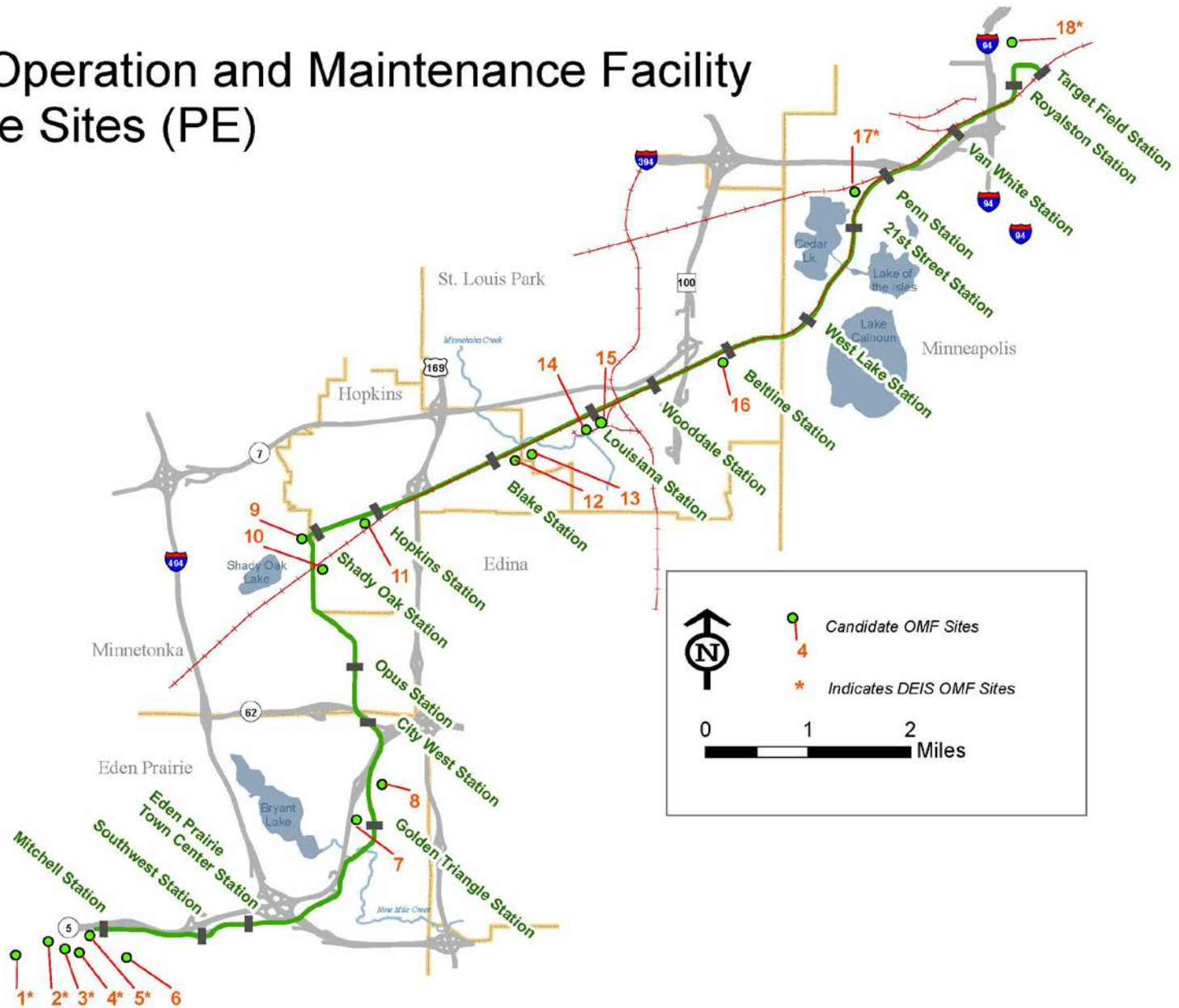
- Issue #23: Locate an OMF facility for SWLRT
  - Site size of 10 to 15 acres
  - Flat/rectangular
  - Efficient LRT train movement
  - Good roadway access to site
  - Compatible with adjacent land use



Franklin (Hiawatha) OMF



# SWLRT Operation and Maintenance Facility Candidate Sites (PE)



# SWLRT OMF Evaluation Criteria

Operational Characteristics	
1	Site Configuration: operational effectiveness
2	Alignment Proximity/Connectivity: distance/connection to mainline
3	Alignment Location: geometric position on mainline
4	Site Access: access for operations staff
Site Characteristics	
5	Adjacent Land Use Compatibility
6	TOD/Mixed Use/Economic Development Considerations
7	Zoning
8	Site & Facilities Cost: facilities, grading, utilities, soils
9	Real Estate Acquisition: cost, complexity, legalities
10	Relocation Cost: displaced occupants and uses
11	Environmental Impact: wetlands, hazardous materials
12	Cultural Resources: cultural, historical
13	Stormwater Management: drainage, treatment

# Decision-Making Process

Issue  
Resolution  
Teams  
(IRT)

Technical  
Project  
Advisory  
Committee  
(TPAC)

Business and  
Community  
Advisory  
Committees  
(BAC/CAC)

Corridor  
Management  
Committee  
(CMC)

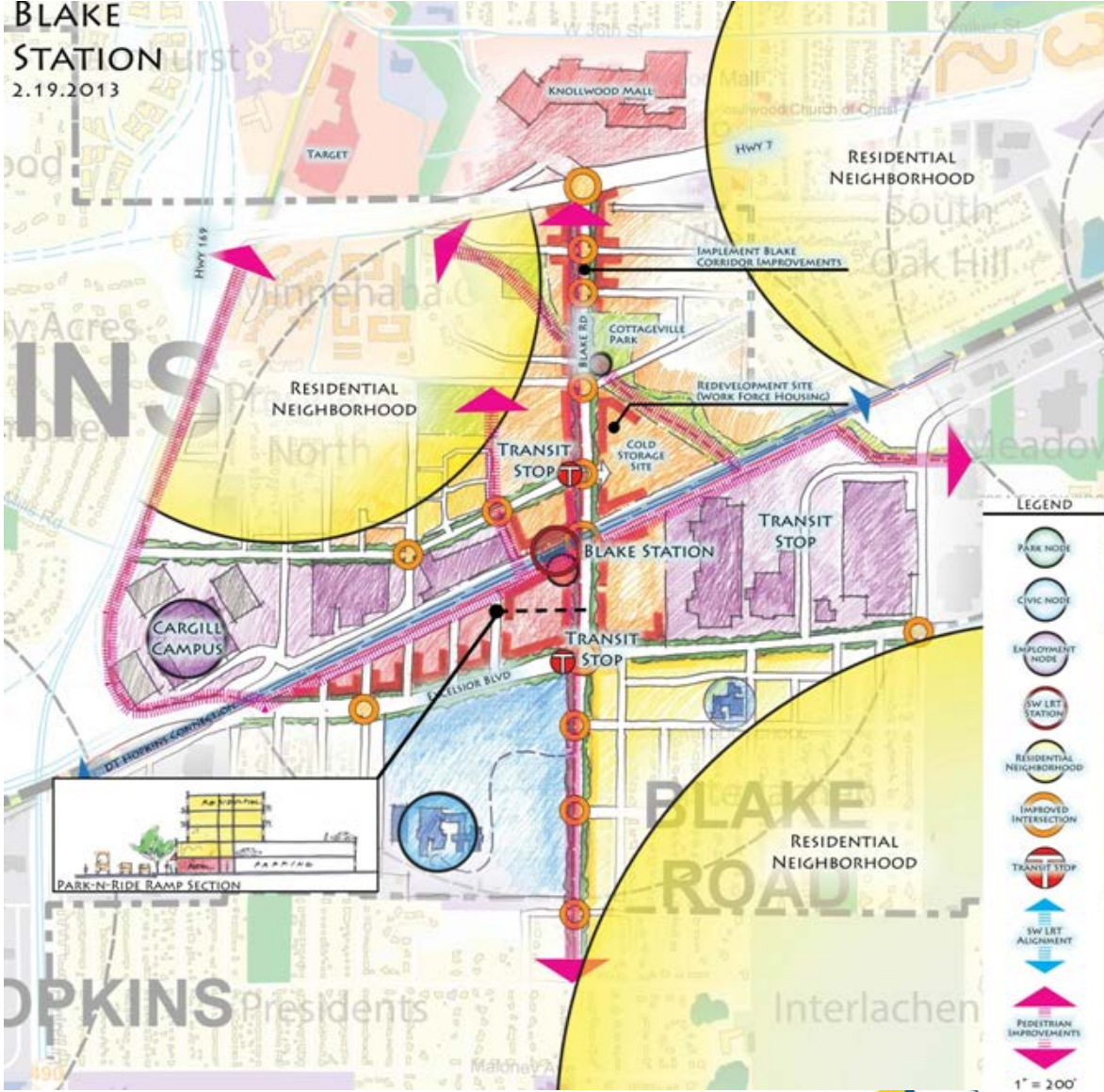
Met Council

## Issue Resolution Process



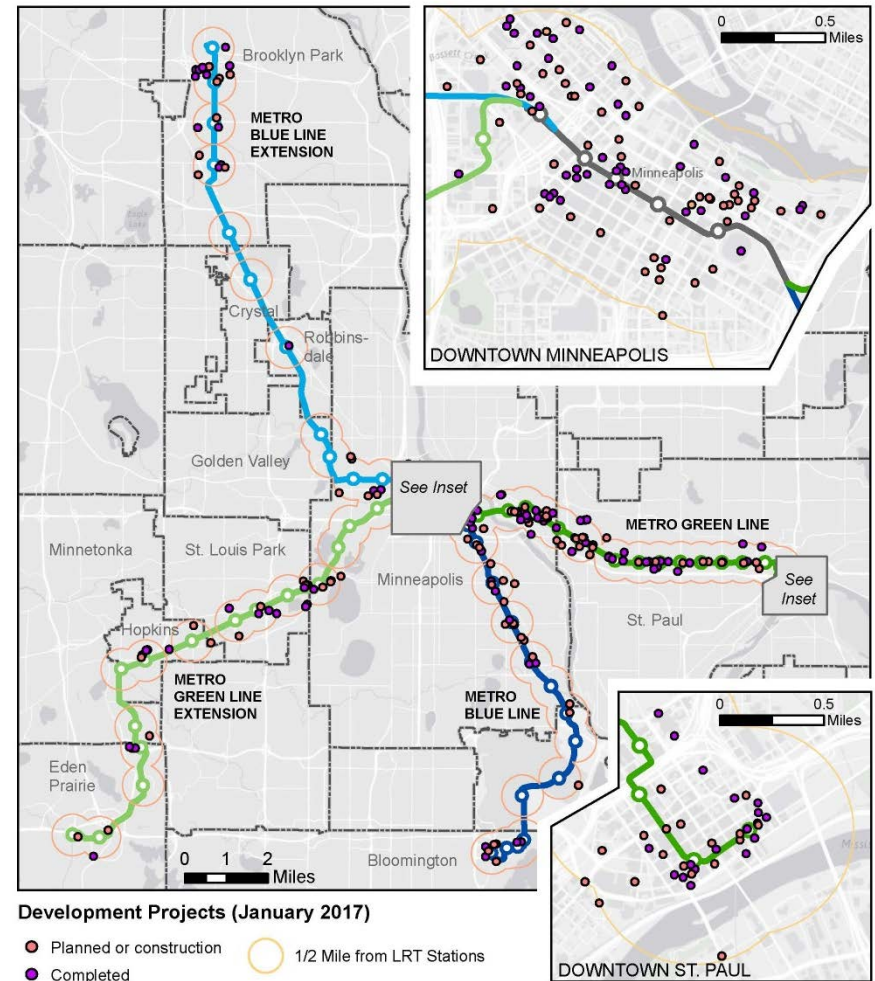
# CAC Accomplishments

- Hennepin County Community Works
  - Transitional Station Area Action Plans
  - Housing Strategy



# Tracking Private Investment

- \$515 million development planned or underway along SWLRT
  - Mix of projects around planned West Lake Street Station in Minneapolis
  - 1+ million s.f. office space around City West Station in Eden Prairie
  - 332-unit residential building proposed near Opus Station in Minnetonka





# CAC Accomplishments

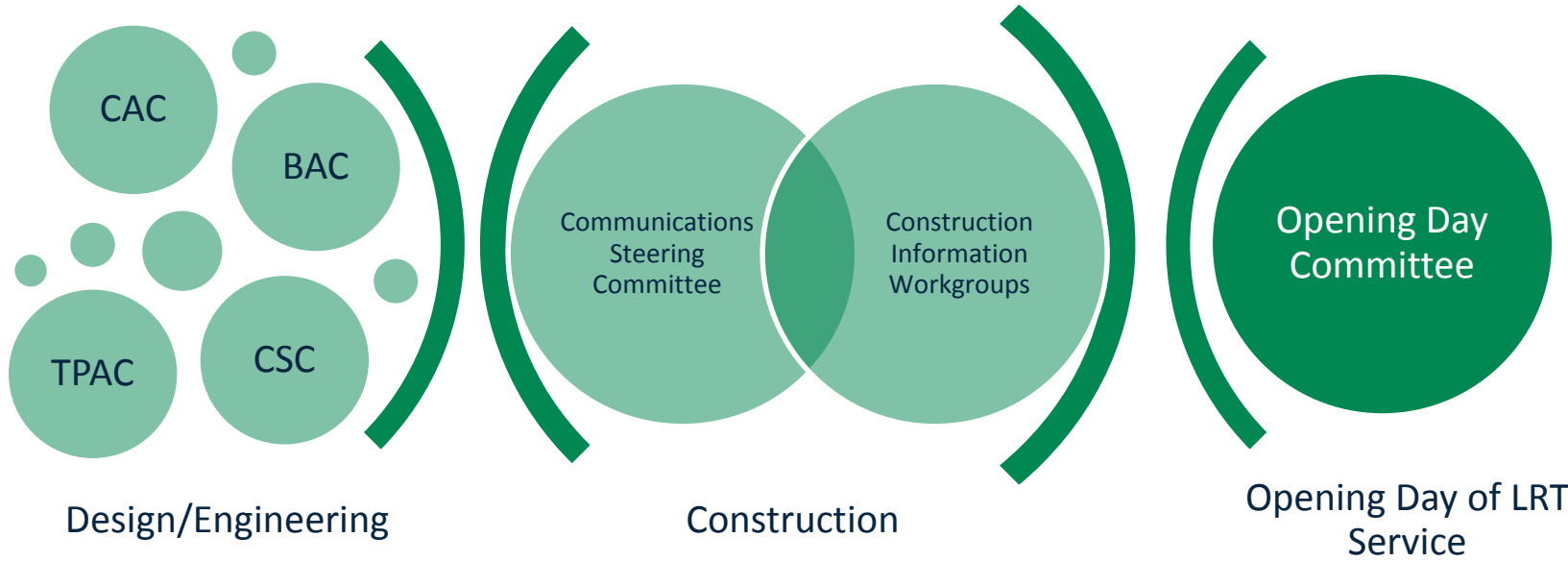
- Public Outreach & Communications



# Next Steps



# Construction Outreach & Communications



# Moving Into Construction

- Construction Information Workgroups (CIWs)
  - Membership: advisory committee members, community/neighborhood groups, city staff
  - Role/function: ensure construction communications are being coordinated/shared in a timely and user-friendly manner; assist SPO in evaluating construction outreach and communication efforts
  - SPO role/function: Convenes/provides staff support

# Moving Into Construction

- Construction Information Workgroups
  - Focus on construction impacts/communications
  - Members interested in CIWs are encouraged to contact outreach coordinator

# More Information

Online:

[www.SWLRT.org](http://www.SWLRT.org)

Email:

[SWLRT@metrotransit.org](mailto:SWLRT@metrotransit.org)

Twitter:

[www.twitter.com/southwestlrt](http://www.twitter.com/southwestlrt)

