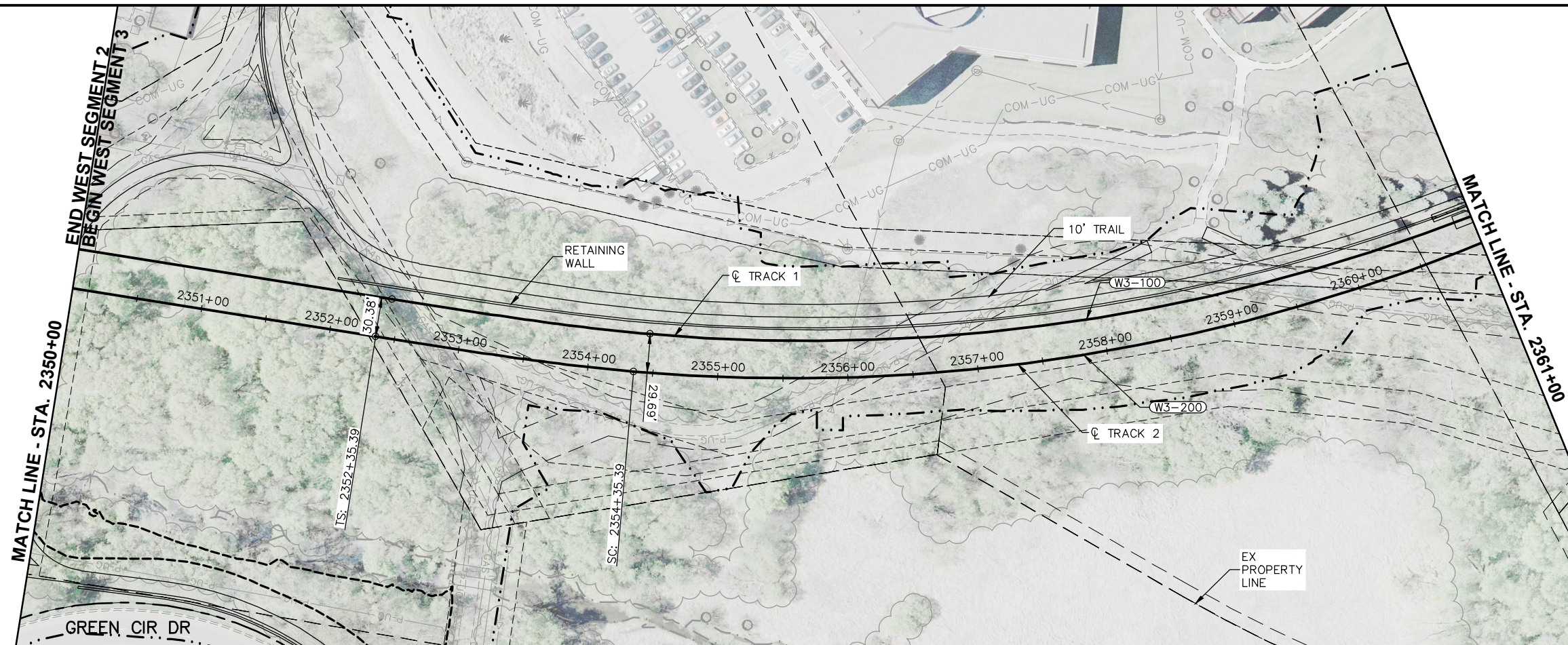
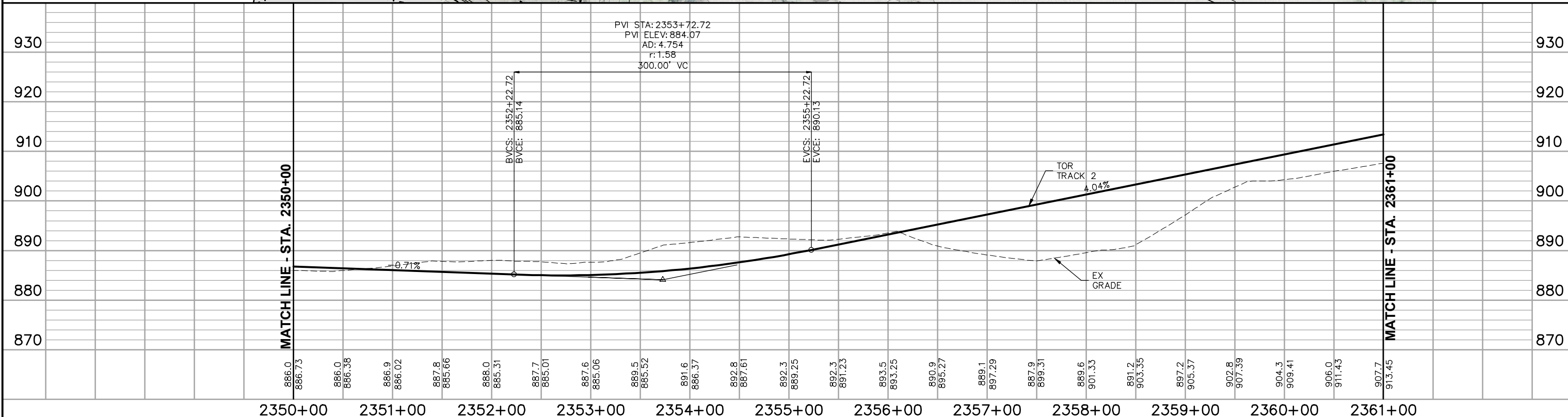
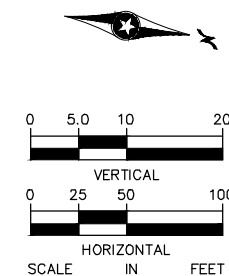


Jun, 19 2014 09:53 am V:\3200_PEC-W\CAD\SEGMENT-W3\SHEET\TRACK\W3-TRK-PLN.dwg By: MaurisBM





CURVE NO. W3-200
R = 1,400.00'
Lc = 992.18'
Ls = 200.00'
Ea = 2.75"
Eu = 2.98"
V = 45 MPH

CURVE NO. W3-100
R = 1,400.00'
Lc = 992.18'
Ls = 200.00'
Ea = 2.75"
Eu = 2.98"
V = 45 MPH



NO.	DATE	BY	CHECK	DESIGN	REVISION / SUBMITTAL

PRELIMINARY ENGINEERING

WEST - VOLUME 1 (CIVIL) - SEGMENT 3

TRACK

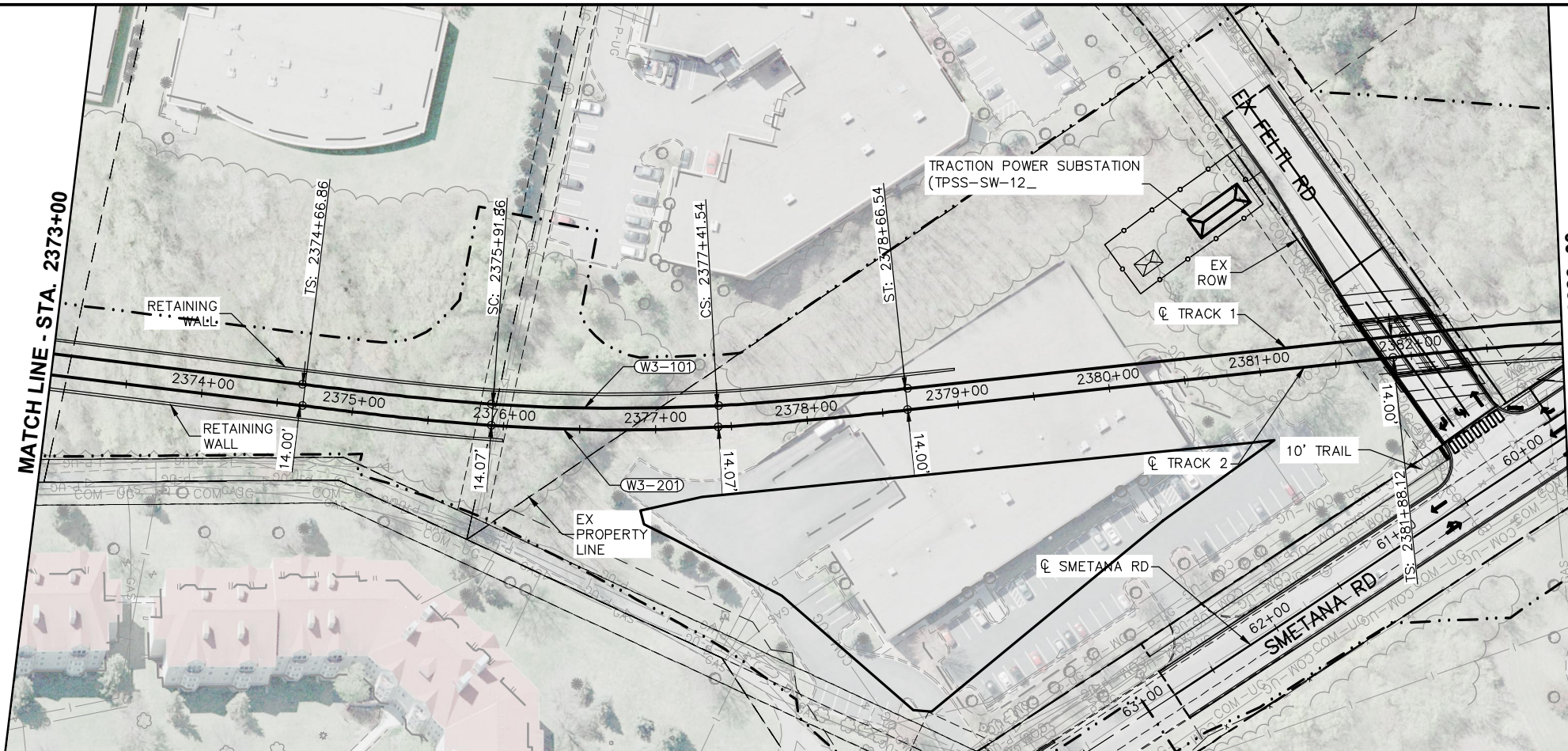
PLAN AND PROFILE

STA. 2350+00 TO STA. 2361+00

DISCIPLINE: TRACK	SHEET NAME: W3-TRK-PPFL-001
-------------------	-----------------------------

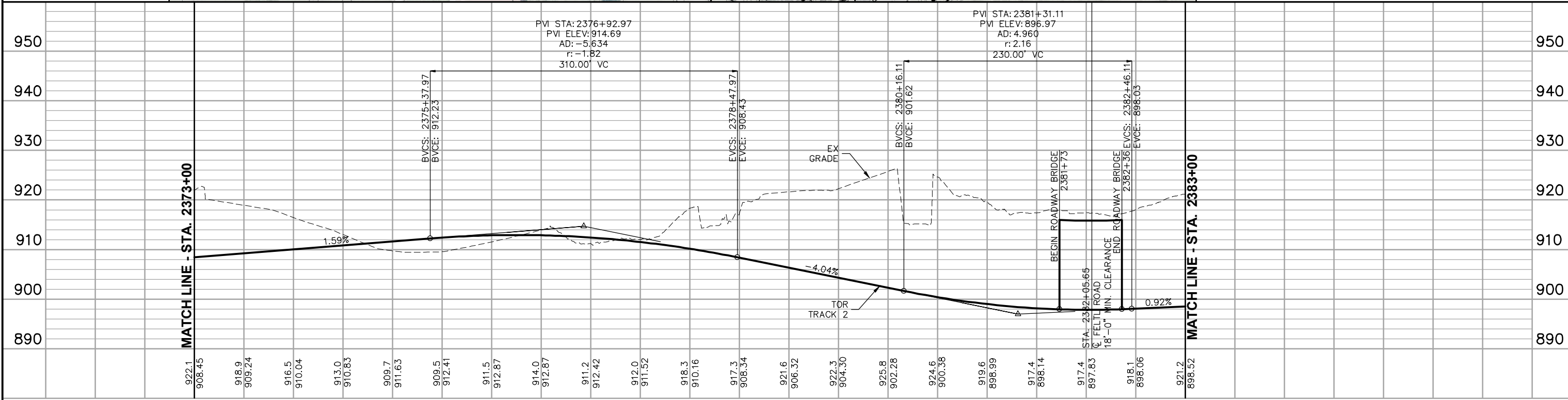
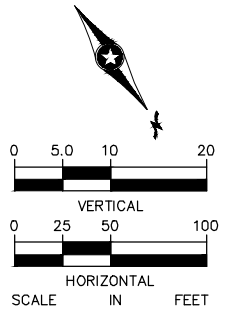
SHEET
27
OF
54

Jun, 19 2014 09:54 am V:\3200_PEC-W\CAD\SEGMENT-W3\SHEET\TRACK\W3-TRK-PLN.dwg By: MaurisBM




CURVE NO. W3-201
R = 1,200.00'
Lc = 149.68'
Ls = 125.00'
Ea = 2.75"
Eu = 2.53"
V = 40 MPH

CURVE NO. W3-101
R = 1,200.00'
Lc = 149.68'
Ls = 125.00'
Ea = 2.75"
Eu = 2.53"
V = 40 MPH




922.1	918.9	916.5	913.0	909.7	909.5	911.5	914.0	911.2	912.0	918.3	917.3	921.6	922.3	925.8	924.6	919.6	917.4	917.4	918.1	921.2
908.45	909.24	910.04	910.83	911.63	912.41	912.87	912.87	912.42	911.52	910.16	908.34	906.32	904.30	902.28	900.38	898.99	898.14	897.83	898.06	898.52
2373+00	2374+00	2375+00	2376+00	2377+00	2378+00	2379+00	2380+00	2381+00	2382+00	2383+00										

NO.	DATE	BY	CHECK	DESIGN	REVISION / SUBMITTAL



PRELIMINARY ENGINEERING



WEST - VOLUME 1 (CIVIL) - SEGMENT 3

TRACK

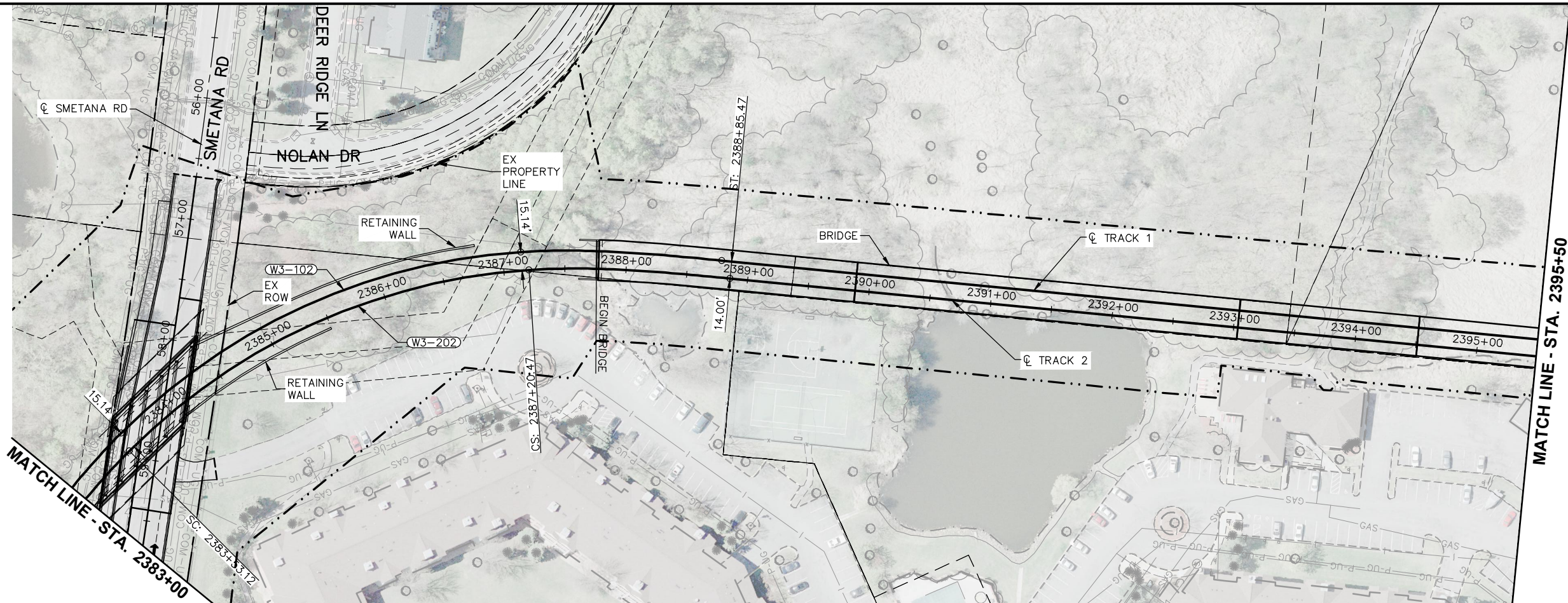
PLAN AND PROFILE

STA. 2373+00 TO STA. 2383+00

DISCIPLINE: TRACK	SHEET NAME: W3-TRK-PPFL-003
-------------------	-----------------------------

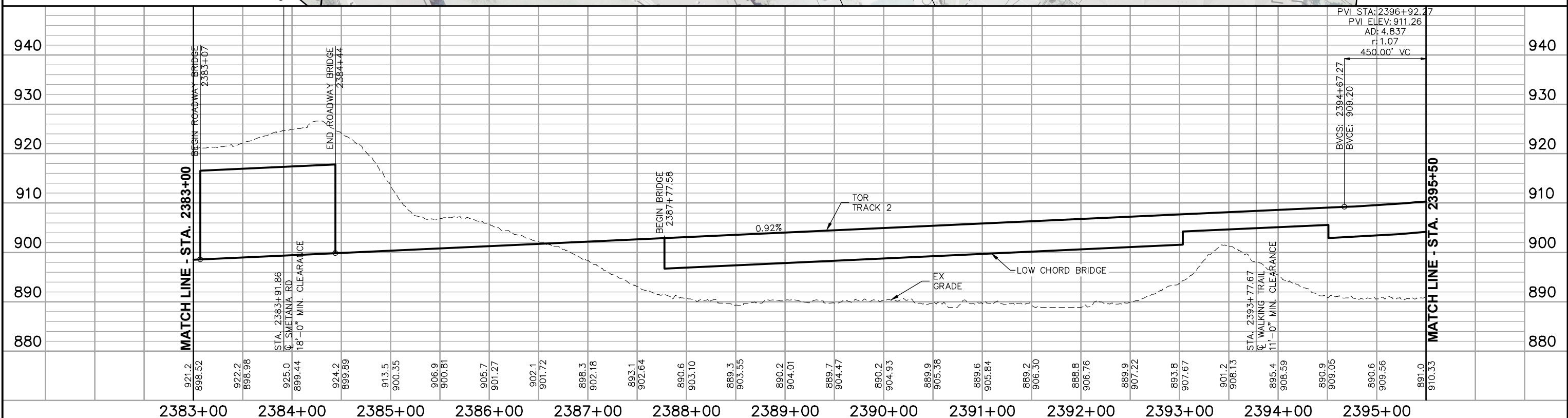
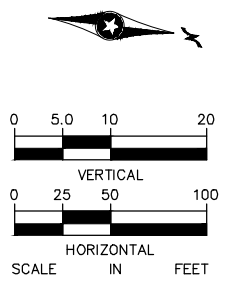
SHEET
29
OF
54

Jun, 19 2014 09:55 am v:\3200_PEC-W\CAD\SEGMENT-W3\SHEET\TRACK\W3-TRK-PLN.dwg By: MaurisBM



CURVE NO. W3-202
R = 510.00'
Lc = 367.35'
Ls = 165.00'
Ea = 4.00"
Eu = 2.99"
V = 30 MPH

CURVE NO. W3-102
R = 510.00'
Lc = 367.35'
Ls = 165.00'
Ea = 4.00"
Eu = 2.99"
V = 30 MPH



NO.	DATE	BY	CHECK	DESIGN	REVISION / SUBMITTAL



PRELIMINARY ENGINEERING



WEST - VOLUME 1 (CIVIL) - SEGMENT 3

TRACK

PLAN AND PROFILE

STA. 2383+00 TO STA. 2395+50

DISCIPLINE: **TRACK** SHEET NAME: **W3-TRK-PPFL-004**

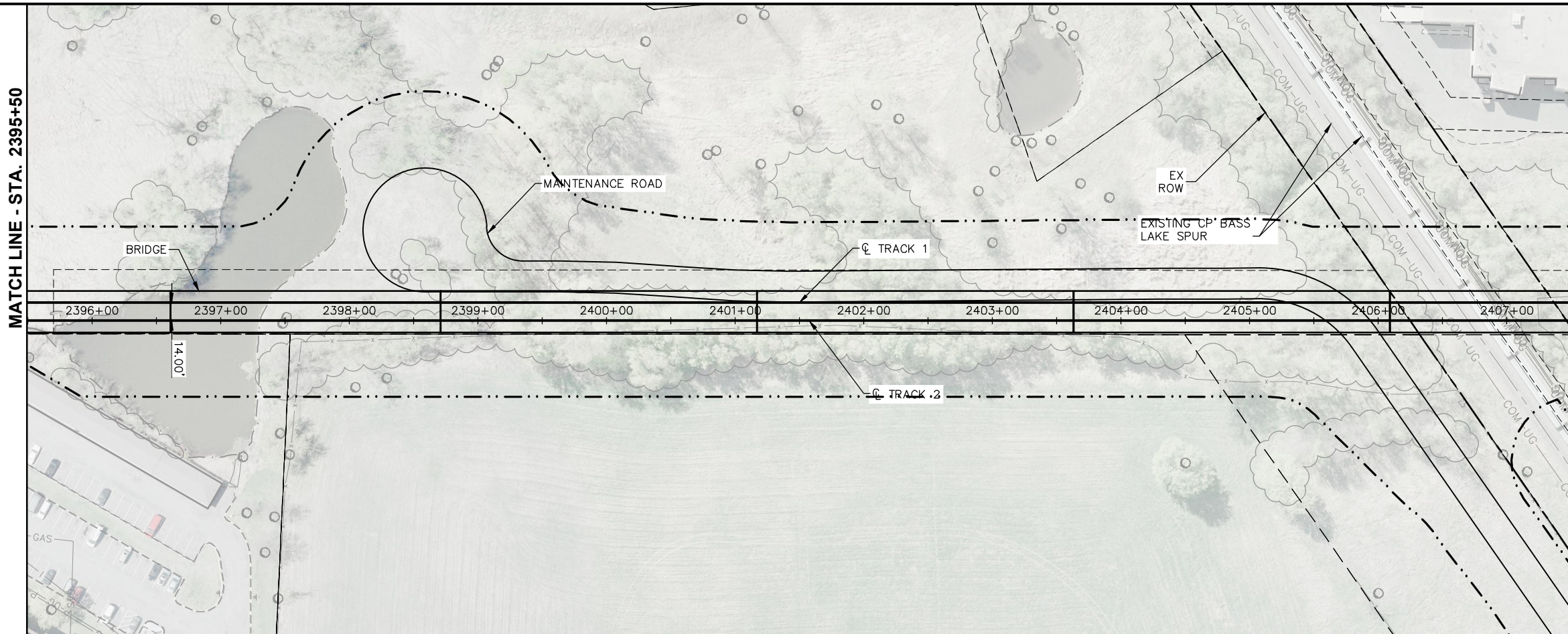
SHEET

30

OF

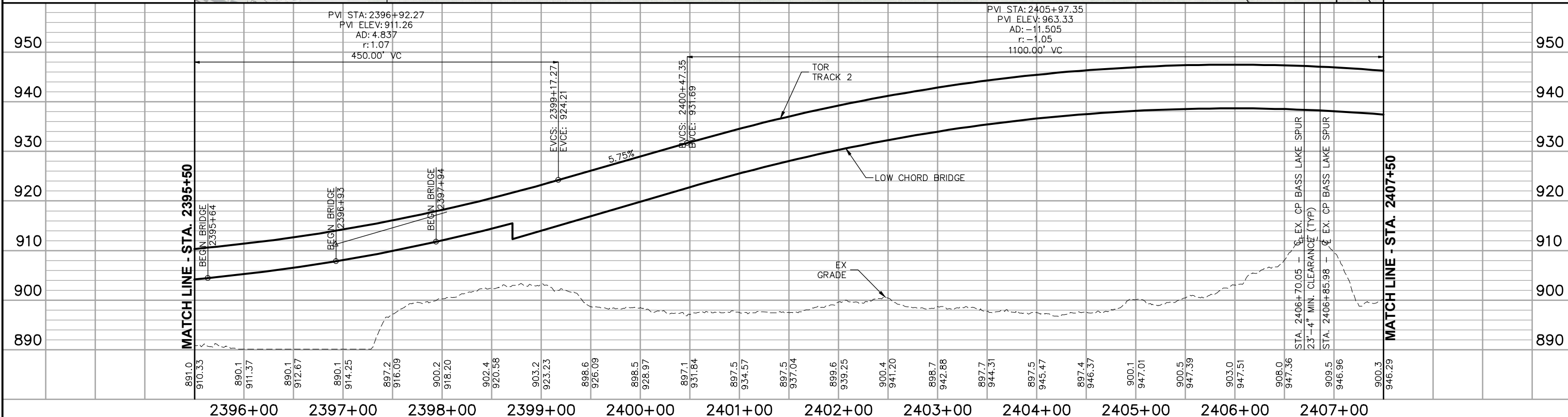
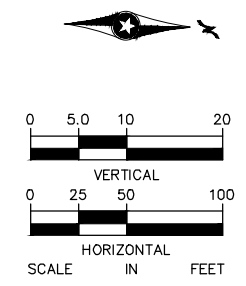
54

Jun, 19 2014 09:56 am v:\3200_PEC-W\CAD\SEGMENT-W3\SHEET\TRACK\W3-TRK-PLN.dwg By: MaurisBM



MATCH LINE - STA. 2407+50


MATCH LINE - STA. 2395+50




MATCH LINE - STA. 2395+50

MATCH LINE - STA. 2407+50

NO.	DATE	BY	CHECK	DESIGN	REVISION / SUBMITTAL



PRELIMINARY ENGINEERING



WEST - VOLUME 1 (CIVIL) - SEGMENT 3

TRACK

PLAN AND PROFILE

STA. 2395+50 TO STA. 2407+50

DISCIPLINE: **TRACK** SHEET NAME: **W3-TRK-PPFL-005**

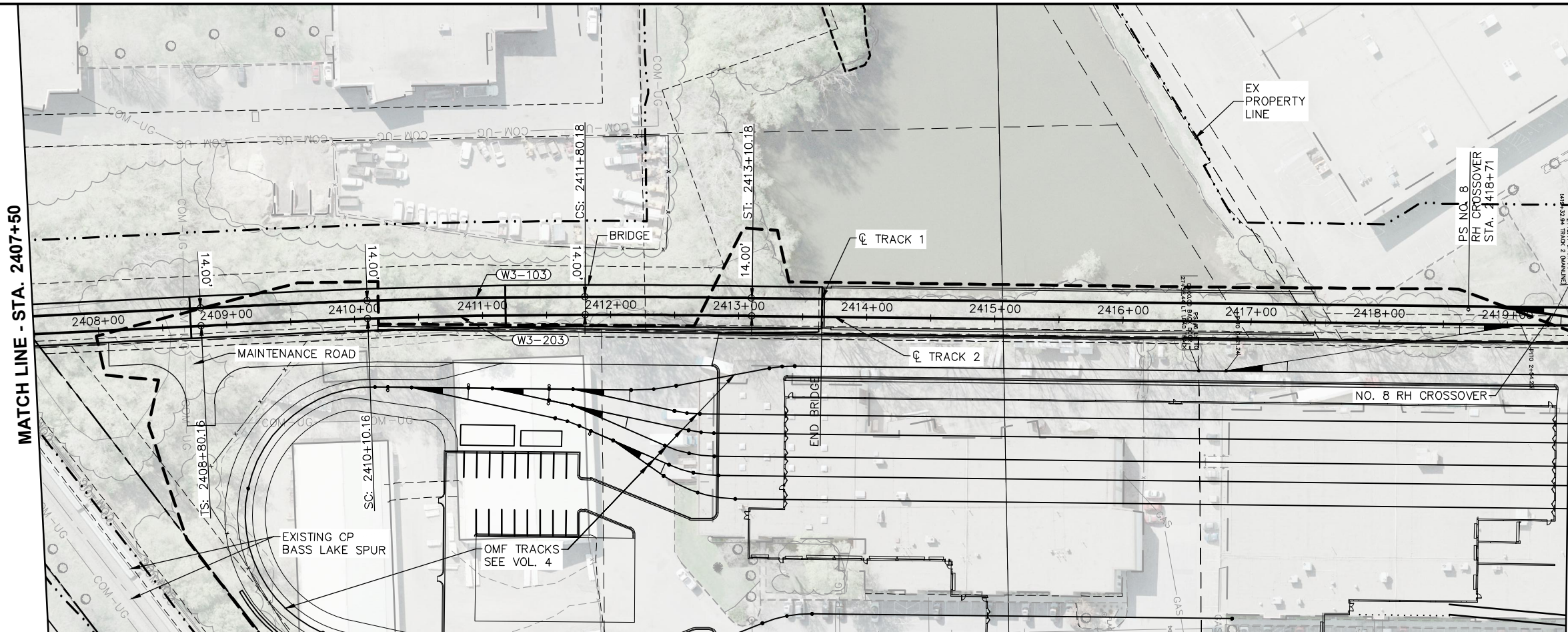
SHEET

31

OF

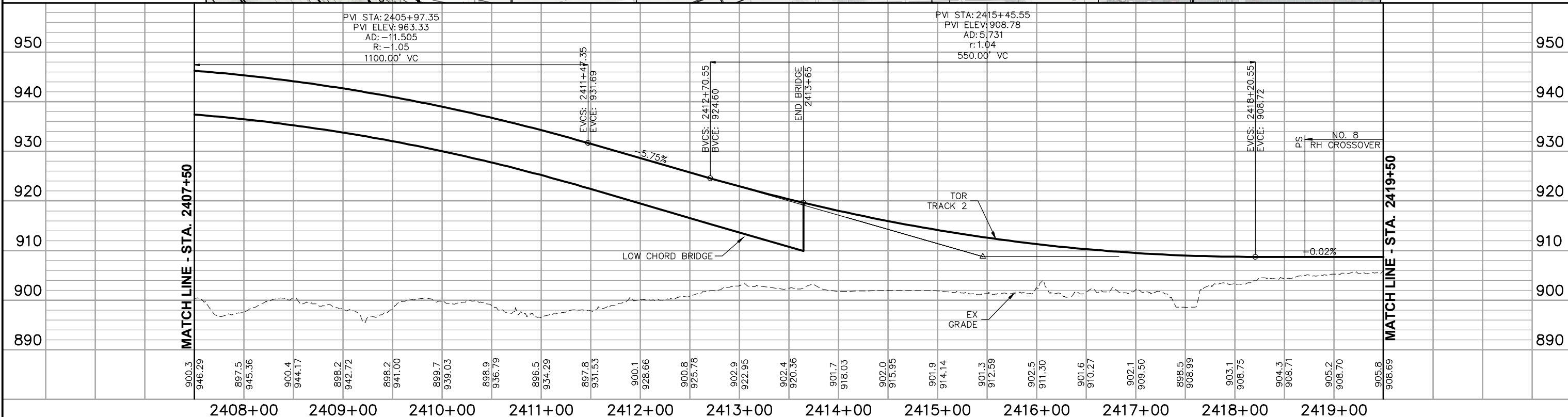
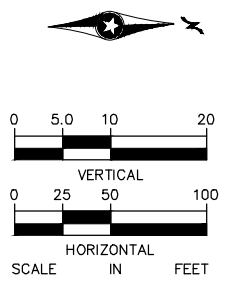
54

Jun, 19 2014 09:56 am v:\3200_PEC-W\CAD\SEGMENT-W3\SHEET\TRACK\W3-TRK-PLN.dwg By: MaurisBM



CURVE NO. W3-203
R = 5,000.00'
Lc = 170.02'
Ls = 130.00'
Ea = 1.00"
Eu = 1.40"
V = 55 MPH

CURVE NO. W3-103
R = 5,000.00'
Lc = 170.02'
Ls = 130.00'
Ea = 1.00"
Eu = 1.40"
V = 55 MPH



NO.	DATE	BY	CHECK	DESIGN	REVISION / SUBMITTAL





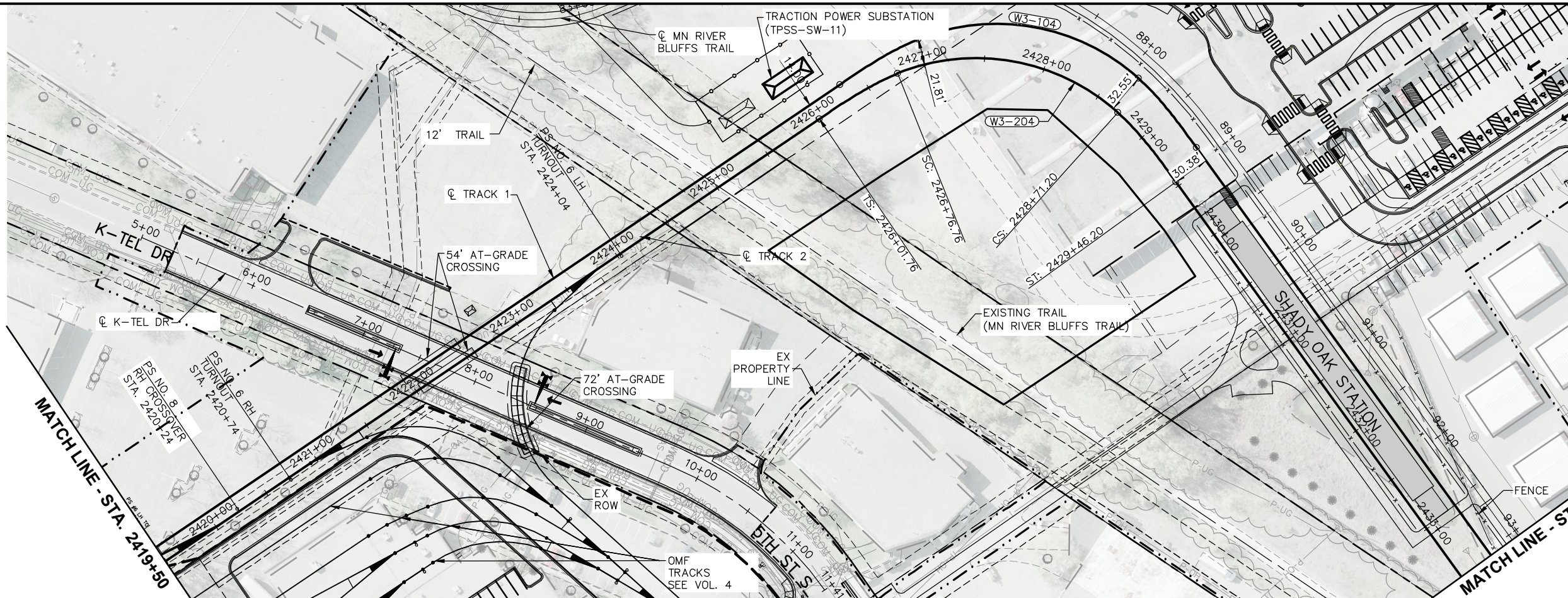
PRELIMINARY ENGINEERING

WEST - VOLUME 1 (CIVIL) - SEGMENT 3
TRACK
PLAN AND PROFILE
STA. 2407+50 TO STA. 2419+50

DISCIPLINE: **TRACK** SHEET NAME: **W3-TRK-PPFL-006**

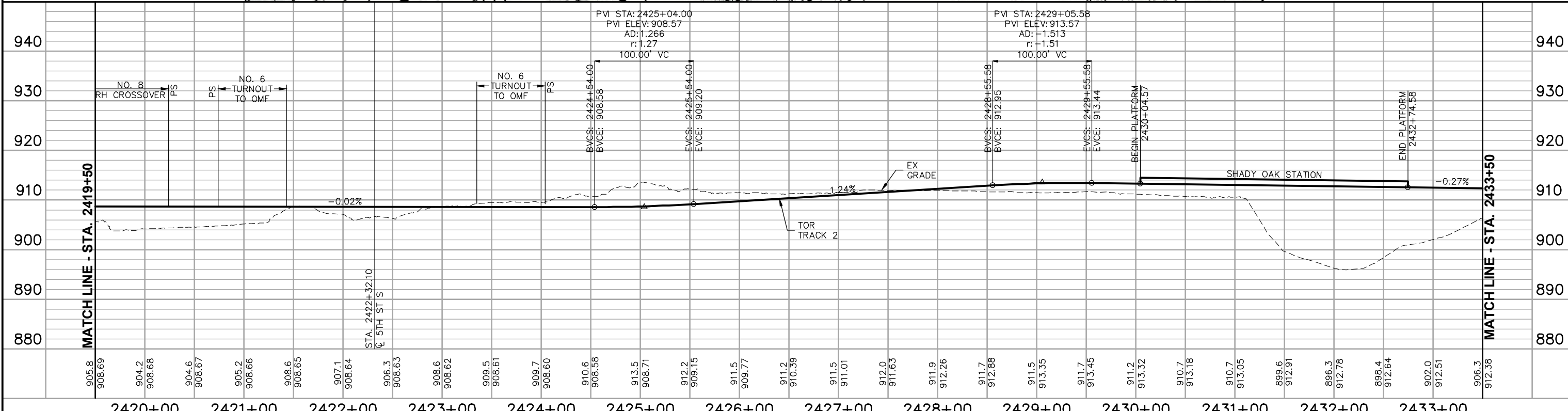
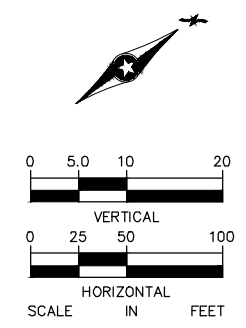
SHEET
32
OF
54

Jun, 19 2014 09:57 am V:\3200_PEC-W\CAD\SEGMENT-W3\SHEET\TRACK\W3-TRK-PLN.dwg By: MaurisBM



CURVE NO. W3-204
R = 175.00'
Lc = 194.44'
Ls = 75.00'
Ea = 2.25"
Eu = 2.84"
V = 15 MPH

CURVE NO. W3-104
R = 175.00'
Lc = 194.44'
Ls = 75.00'
Ea = 2.25"
Eu = 2.84"
V = 15 MPH



NO.	DATE	BY	CHECK	DESIGN	REVISION / SUBMITTAL





PRELIMINARY ENGINEERING

WEST - VOLUME 1 (CIVIL) - SEGMENT 3

TRACK

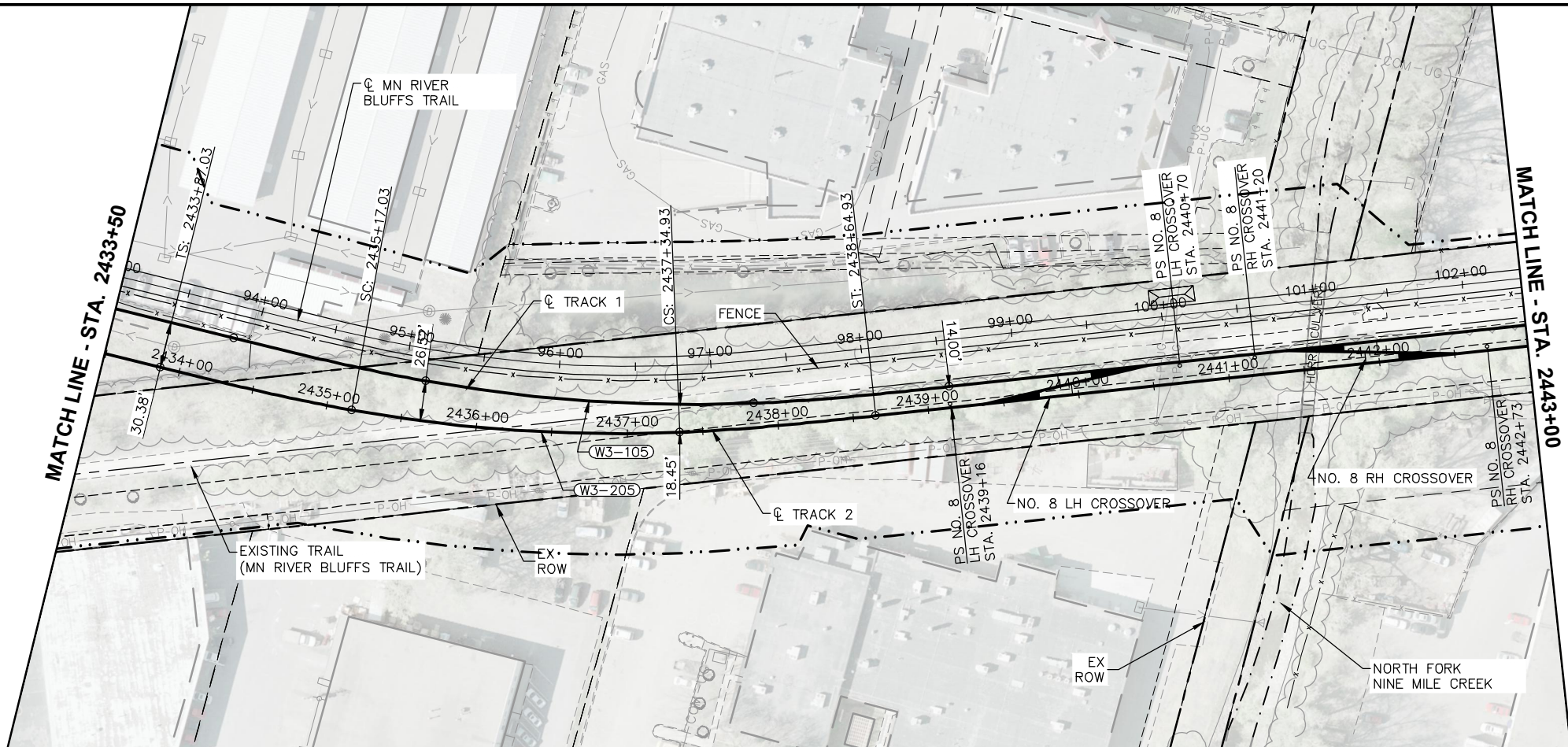
PLAN AND PROFILE

STA. 2419+50 TO STA. 2433+50

DISCIPLINE: **TRACK** SHEET NAME: **W3-TRK-PPFL-007**

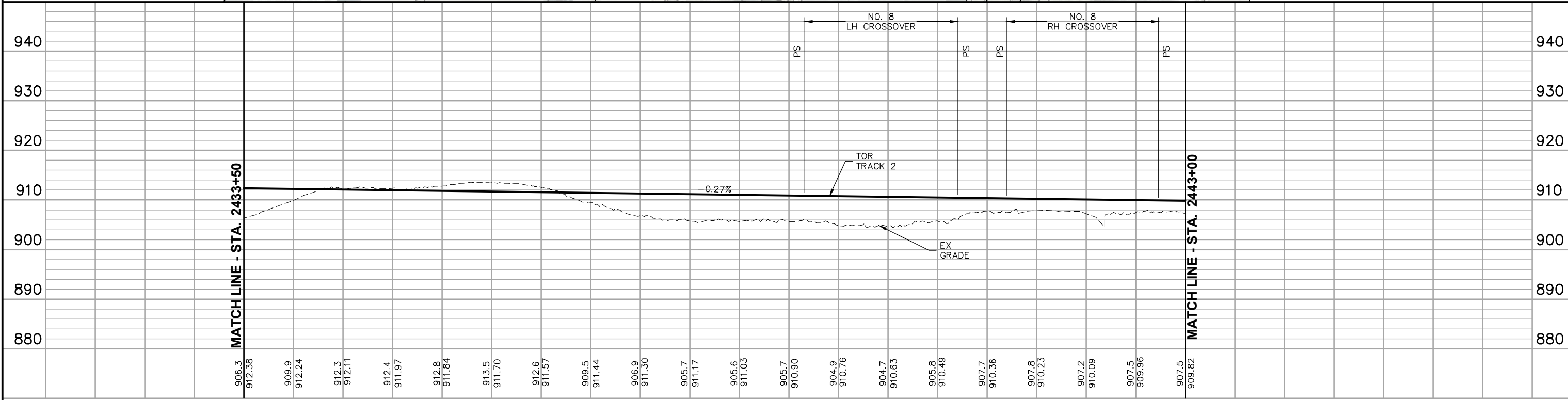
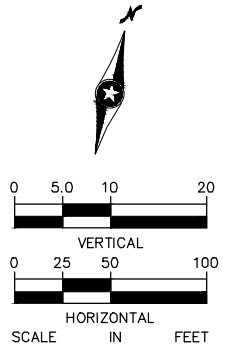
SHEET
33
OF
54

Jun, 19 2014 09:58 am v:\3200_PEC-W\CAD\SEGMENT-W3\SHEET\TRACK\W3-TRK-PLN.dwg By: MaurisBM



CURVE NO. W3-205
R = 1,000.00'
Lc = 217.90'
Ls = 130.00'
Ea = 2.75"
Eu = 2.10"
V = 35 MPH

CURVE NO. W3-105
R = 1,000.00'
Lc = 217.90'
Ls = 130.00'
Ea = 2.75"
Eu = 2.10"
V = 35 MPH



906.3 912.38	909.9 912.24	912.3 912.11	912.4 911.97	912.8 911.84	913.5 911.70	912.6 911.57	909.5 911.44	906.9 911.30	905.7 911.17	905.6 911.03	905.7 910.90	904.9 910.76	904.7 910.63	905.8 910.49	907.7 910.36	907.8 910.23	907.2 910.09	907.5 909.96	907.5 909.82
2434+00	2435+00	2436+00	2437+00	2438+00	2439+00	2440+00	2441+00	2442+00	2443+00										

NO.	DATE	BY	CHECK	DESIGN	REVISION / SUBMITTAL





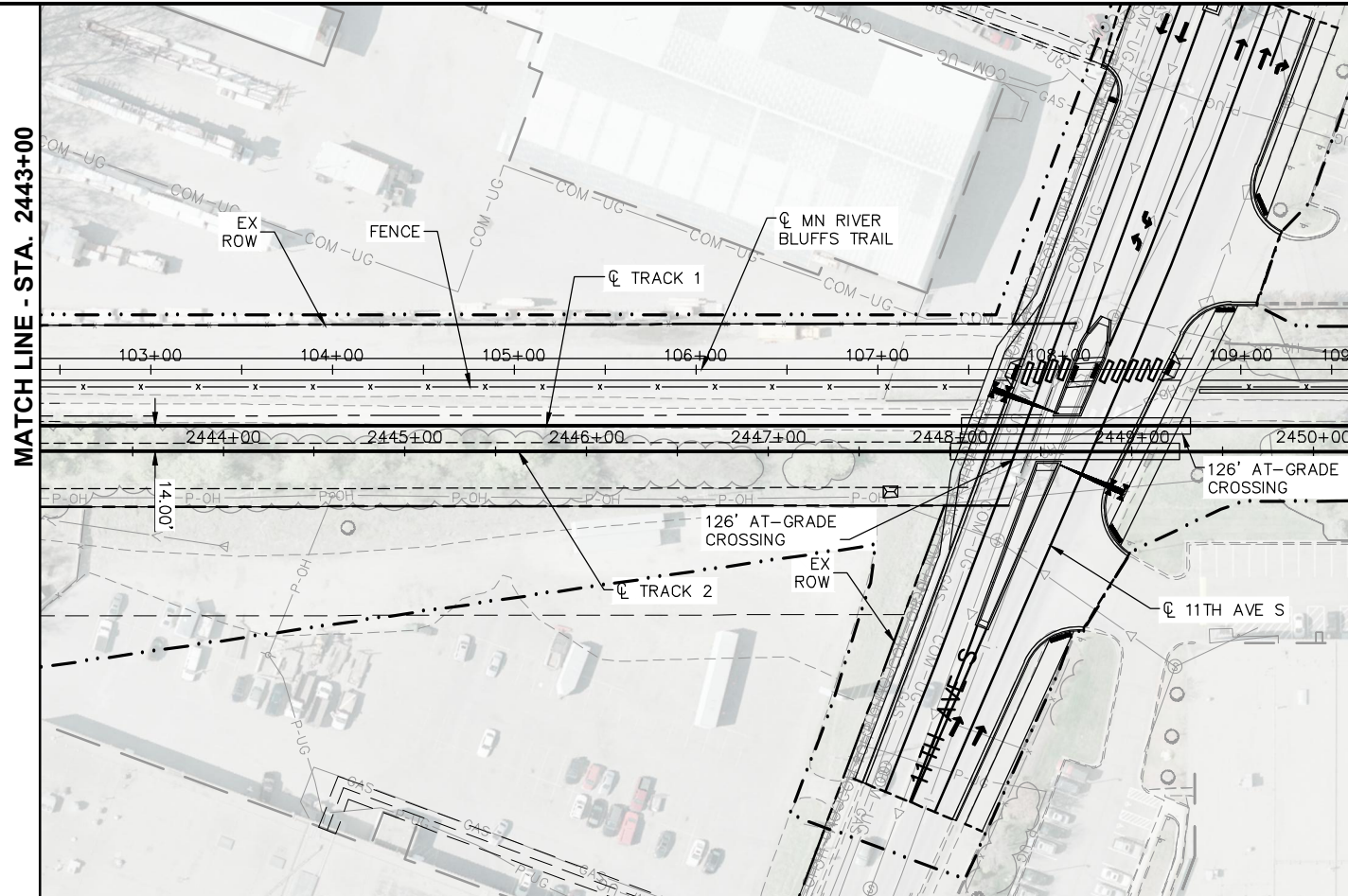

PRELIMINARY ENGINEERING

WEST - VOLUME 1 (CIVIL) - SEGMENT 3
TRACK
PLAN AND PROFILE
STA. 2433+50 TO STA. 2443+00

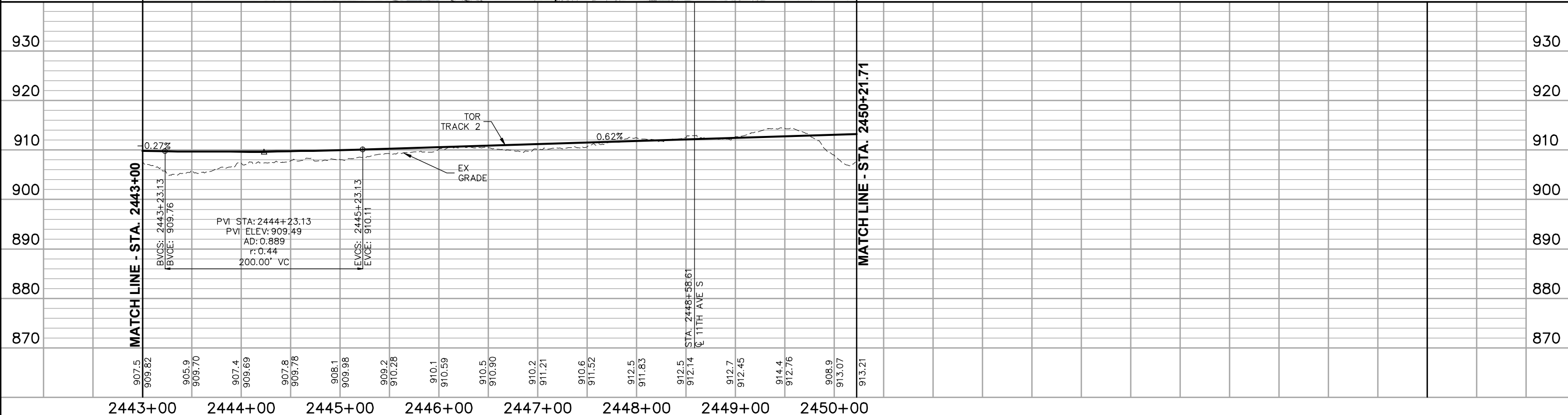
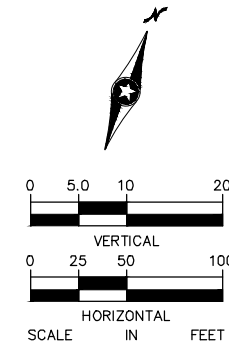
DISCIPLINE: TRACK	SHEET NAME: W3-TRK-PPFL-008
--------------------------	------------------------------------

SHEET
34
OF
54

Jun, 19 2014 09:58 am v:\3200_PEC-W\CAD\SEGMENT-W3\SHEET\TRACK\W3-TRK-PLN.dwg By: MaurisBM



END WEST SEGMENT 3 STA. 2450+21.71
BEGIN EAST SEGMENT 1 STA. 2500+00



MATCH LINE - STA. 2450+21.71

NO.	DATE	BY	CHECK	DESIGN	REVISION / SUBMITTAL

AECOM

PRELIMINARY ENGINEERING

**WEST - VOLUME 1 (CIVIL) - SEGMENT 3
TRACK
PLAN AND PROFILE
STA. 2443+00 TO STA. 2450+21.71**

DISCIPLINE: TRACK SHEET NAME: W3-TRK-PPFL-009

SHEET 35 OF 54