

SOUTHWEST

Green Line LRT Extension



Community Advisory Committee

March 31, 2015



Today's Topics

- Welcome
- Hennepin County Community Works Update
- Member and Committee Reports/Public Forum
- Project Overview
- Station Open House Overview



Hennepin County Community Works Update



SOUTHWEST LRT
community works

green means go.

connecting people to jobs, housing, shopping, and fun

Community Advisory Committee

March 31, 2015

Kerri Pearce Ruch, Hennepin County



St. Louis Park
MINNESOTA



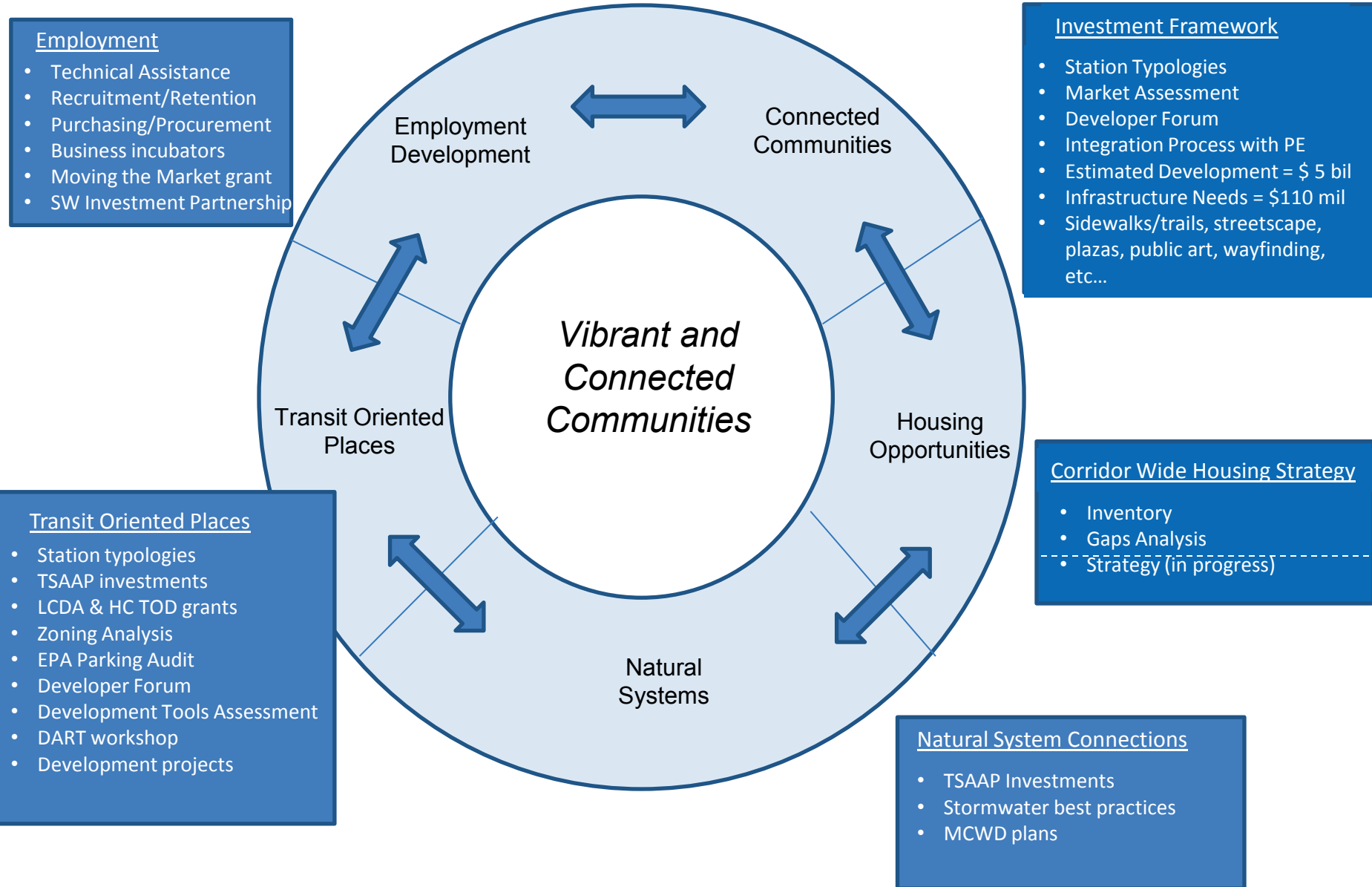
MINNEHAHA CREEK
WATERSHED DISTRICT



Steering Committee Charter

- Provide guidance & direction for the Southwest LRT Community Works Project
- Influence development plans & investments to maximize opportunities along the Southwest LRT line
- Leverage funds to solicit private sector investment & attract grant funds
- Act as the liaison with the Southwest LRT Corridor Management Committee (CMC) to ensure policy coordination & strong integration of land use/economic development and LRT engineering

Laying the Foundation



Steering Committee Survey

The Southwest Community Works Steering Committee survey was conducted as a tool to help shape the committee's work in 2015.

Recommendations

Steering Committee Charter

- No modifications to Steering Committee charter needed at this time.

Steering Committee Membership

- Consider expanding membership to include the Three Rivers Park District, corporate/business leaders, watershed districts & foundations.

Organizational Structure

- Strengthen relationship with TIC through more frequent presentations & project updates.
- Clarify roles/responsibilities of the Business and Community Advisory Committees to improve service to the Steering Committee.

2015 Focus Areas/Priorities

- Update the 2015/2016 workplan to reflect prioritized focus areas - infrastructure connections, financing/funding, public spaces, jobs/employment development & collaboration.

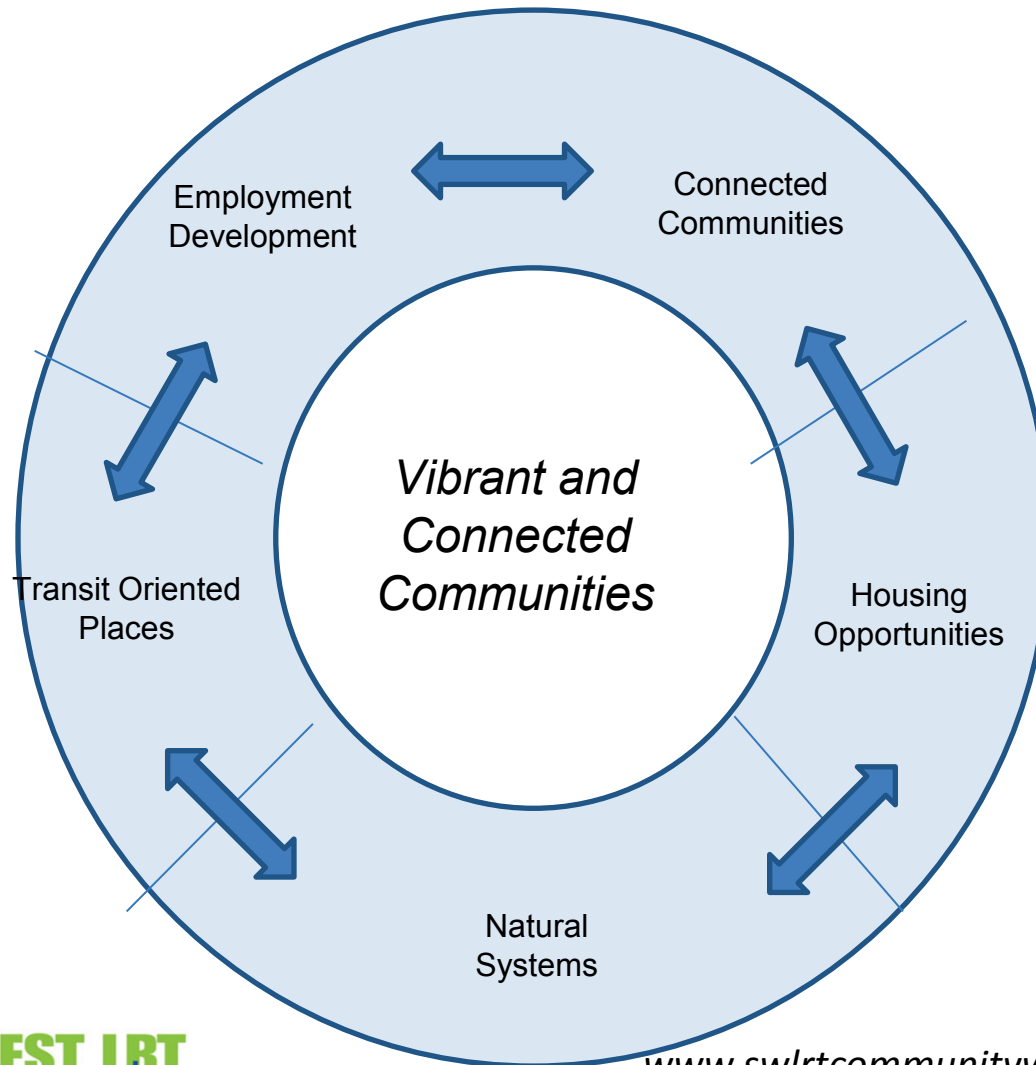
2015 Adopted Workplan

Act as the coordination entity to implement the “beyond the rails” initiative which focuses on building vibrant and connected communities through focusing on connecting communities, access to jobs, creating transit oriented development, providing housing choices, and enhancing natural systems.

- Investment Framework
- Corridor Wide Housing Strategy
- Finance Tools
- Transit Oriented Development (TOD)
- Strategic Marketing and Communications

Southwest Community Works Vision

“connecting people to jobs, housing, shopping and fun”



Member and Committee Reports / Public Forum

Station Open House Overview

Station Design Goals

- Acknowledge the different communities and station sites along the line
- Tie the stations together with a corridor-wide design approach
- Provide design consistency with the METRO Green Line
- Control construction and maintenance costs based on lessons learned from past projects

Station Design Approach

- Identify 4 station types based on station site characteristics
 - Each station to be 1 of 4 unique station types
- Station site character contributors
 - Public comments
 - City, county, and park staff comments
 - Previous Hennepin County station area planning – Transitional Station Area Action Plans (TSAAP)
 - Southwest LRT Project Office staff station site observations

Four Station Types

- Landscape Station
- Neighborhood Station
- Town Square Station
- Landmark Station

Understated



Bold

Station Prototypes

Landscape



Neighborhood



Town Square

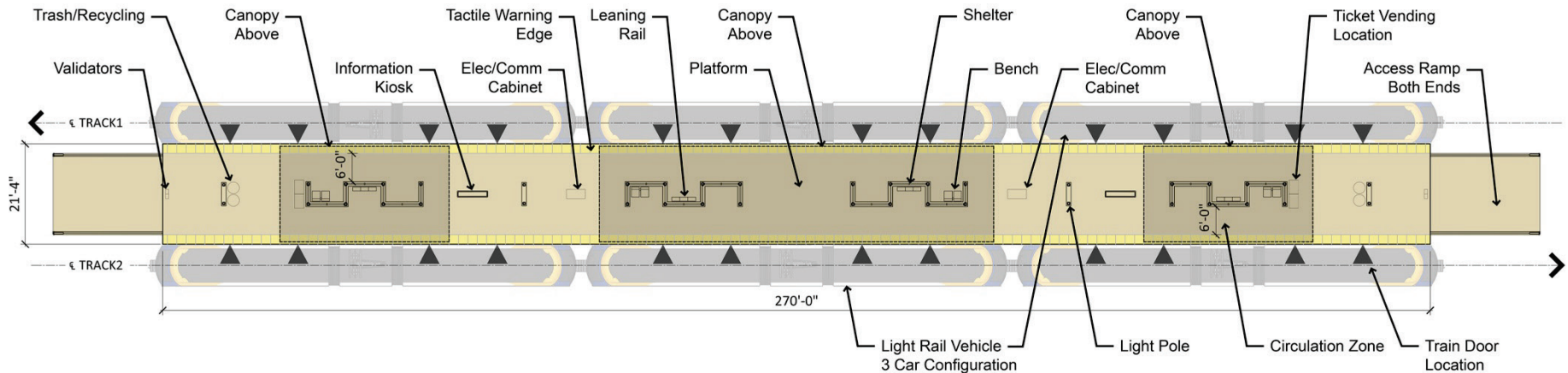


Landmark



Station Design Consistency

- Station layout and location of features needs to be consistent for passenger use
- Typical center platform plan diagram:



Station Design Flexibility

- 4 station types based on setting
- Adjustments to station types based on site specific conditions
- Additional use of station elements for wayfinding
- Color, texture and pattern
- Integrated Public Art
 - On-platform
 - Off-platform

Station Design Input

- The Southwest Project Office (SPO) is looking for your input on:
 - Significant station site characteristics
 - Suggested station type locations
 - Station prototypes

Station Open House Schedule

- Minneapolis Stations
 - Dunwoody College of Technology, 818 Dunwoody Blvd.
 - Thursday, April 2: 5:30 – 7:30PM
 - Wednesday, April 8: 7:30 – 9:30AM
- St. Louis Park Stations
 - St. Louis Park City Hall, 5005 Minnetonka Blvd.
 - Wednesday, April 8: 5:30 – 7:30PM
- Eden Prairie Stations
 - Eden Prairie City Center, 8080 Mitchell Road
 - Thursday, April 9: 5:30 – 7:30PM
- Hopkins & Minnetonka Stations
 - Hopkins City Hall, 1010 1st Street S.
 - Tuesday, April 14: 5:30 – 7:30PM

Next Meeting

- Tuesday, April 28, 2015 at 6:00 PM

More Information

Online:

www.SWLRT.org

Email:

SWLRT@metrotransit.org

Twitter:

www.twitter.com/southwestlrt

