

SOUTHWEST

Green Line LRT Extension



# Community Advisory Committee Meeting

April 24, 2014



# Today's Topics

- Welcome
- Approval of Minutes
- Project Update
- Hennepin County Community Works
- Community Advisory Committee Next Steps
- Member & Committee Reports/Public Forum
- Adjourn



# Project Update

# Approved Scope & Budget

# SWLRT Advisory Committee Meetings

- 4/2 Corridor Management Committee
  - Receive public testimony
  - Recommendation on project scope and budget

# April 2 CMC Public Testimony



# SWLRT Met Council Meetings

- 4/2 Met Council Committee of the Whole
  - SWLRT update on staff recommendation
- 4/9 Met Council Meeting
  - Receive public testimony
  - Adopt project scope and budget

# April 9 Met Council Public Testimony

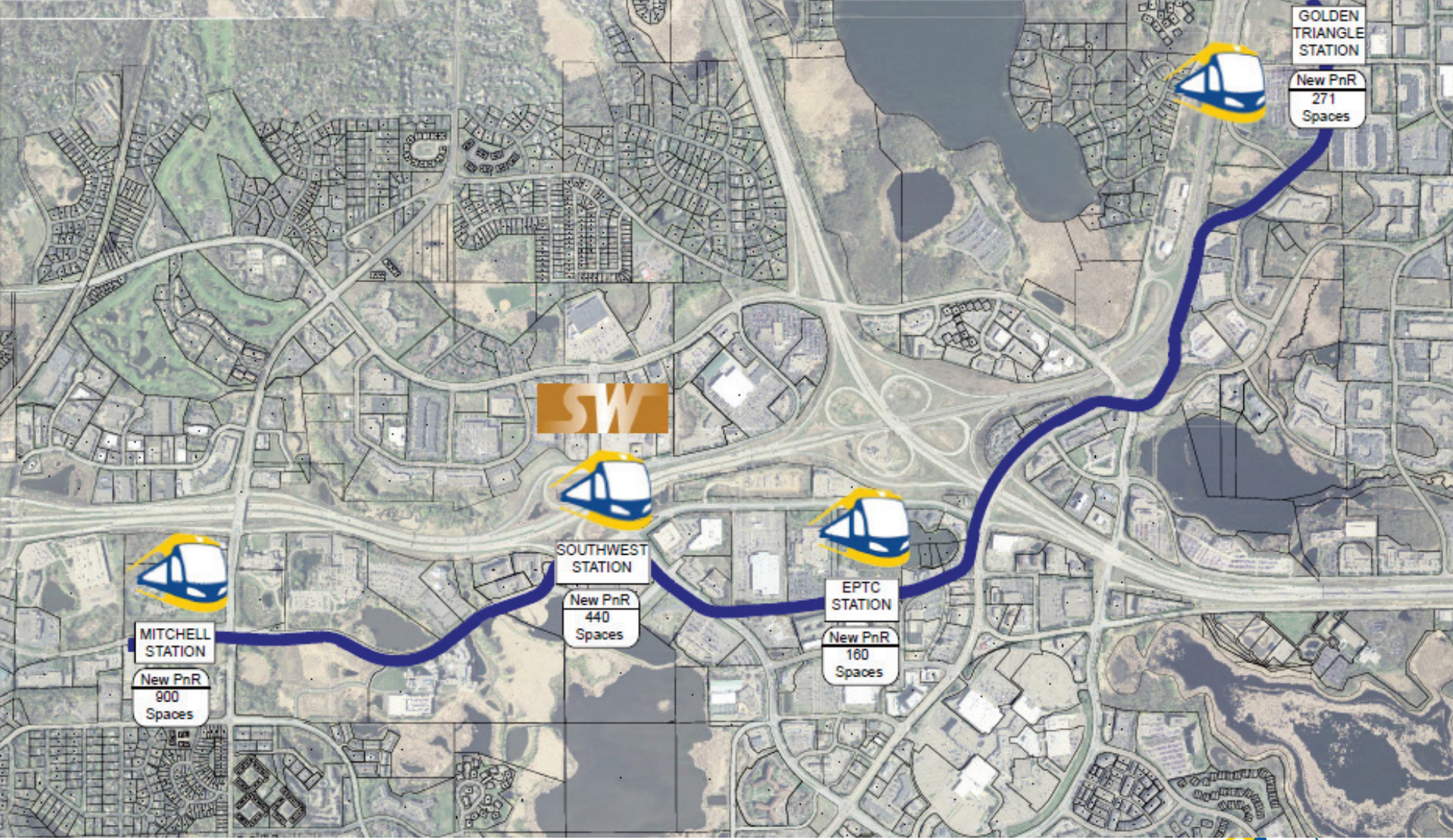





# Project Scope

- Technical Issue #1: Retain Mitchell Road Station in Eden Prairie
- Technical Issue #21: Shallow LRT Tunnels over Channel in Kenilworth Corridor with a 2019 Opening

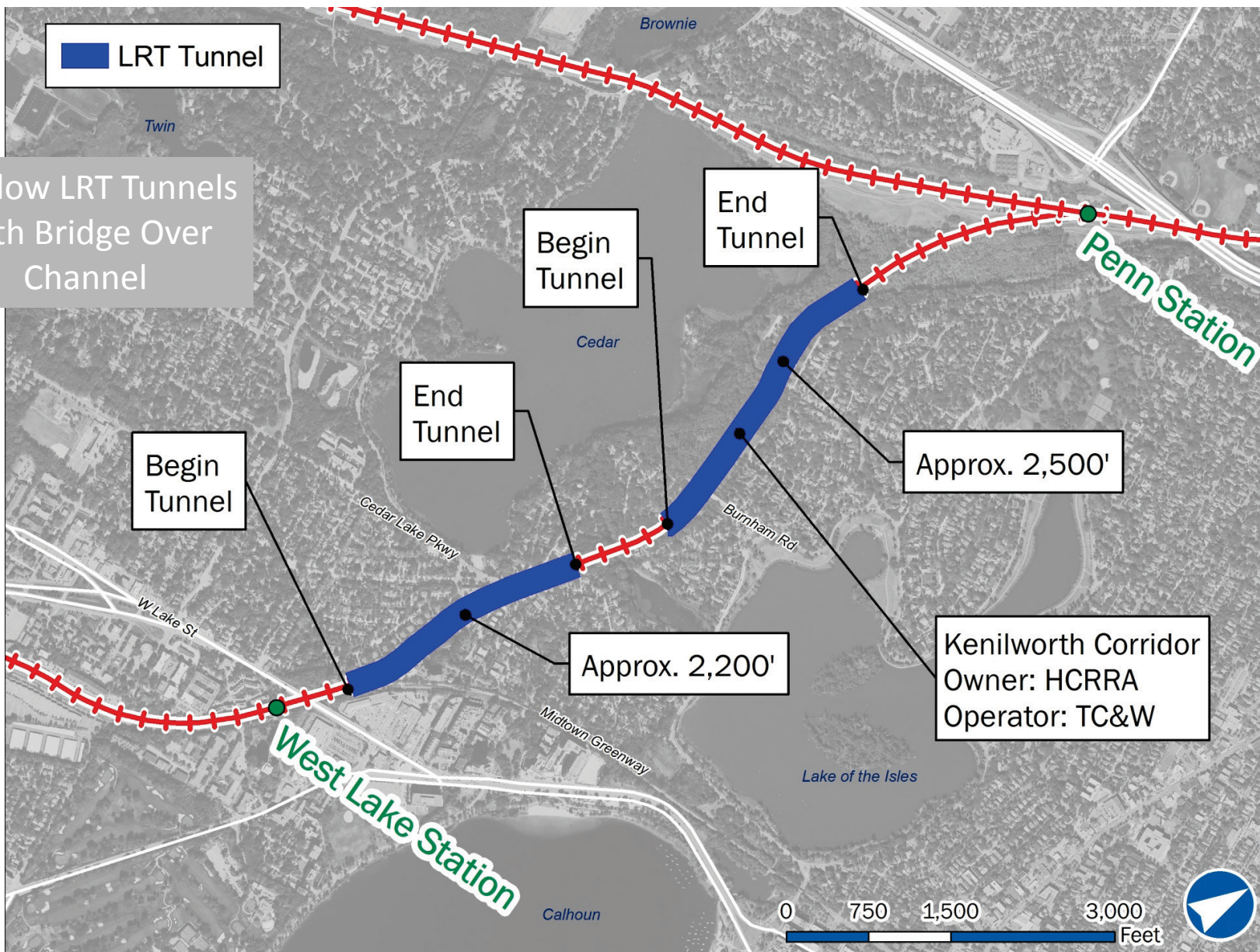
# Eden Prairie Alignment to Mitchell Road



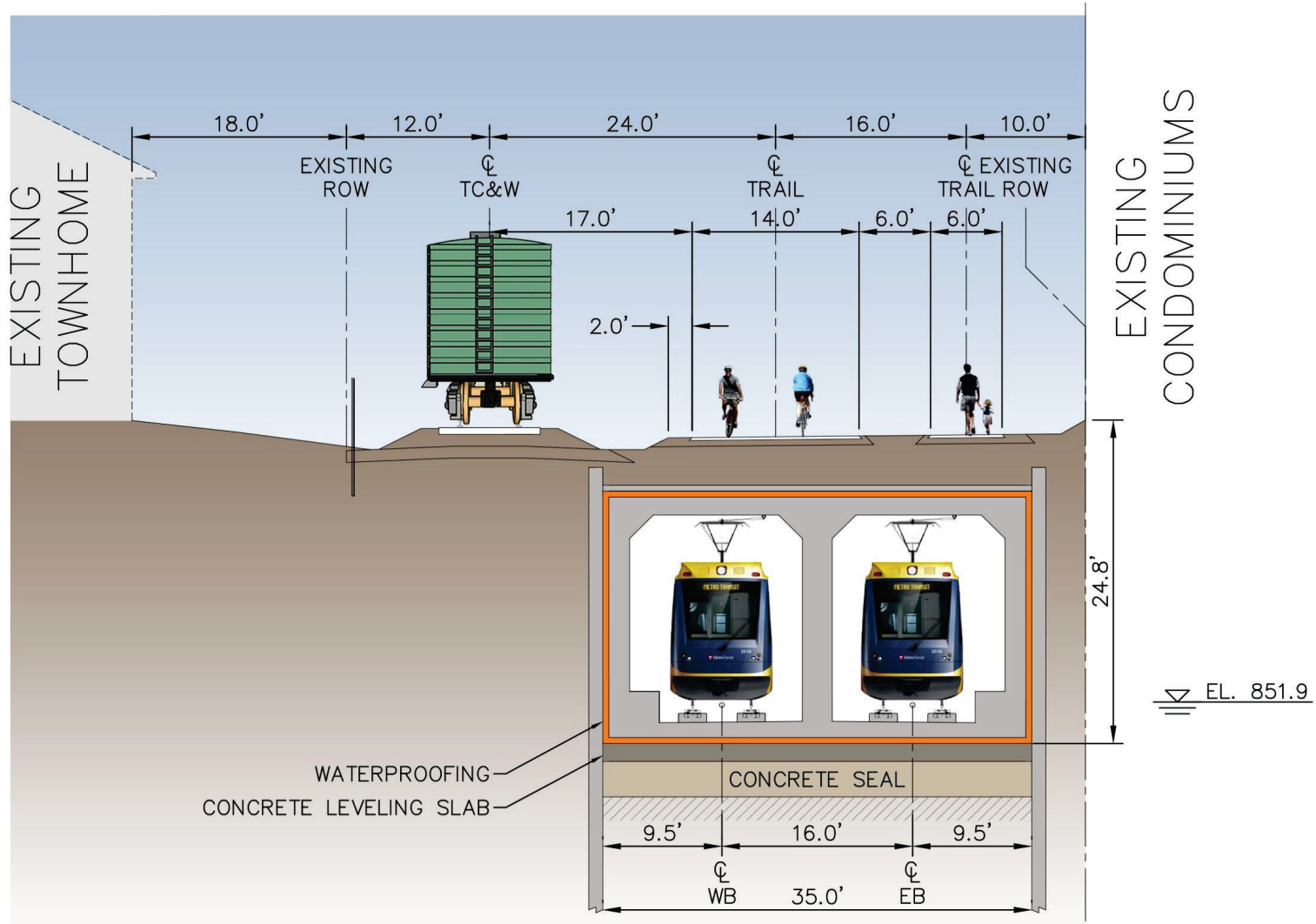


 LRT Tunnel

Shallow LRT Tunnels  
with Bridge Over  
Channel



# Kenilworth Shallow LRT Tunnel at South End





# Kenilworth Shallow LRT Tunnels with LRT Bridge Over Channel



# Kenilworth Shallow LRT Tunnels with LRT Bridge Over Channel



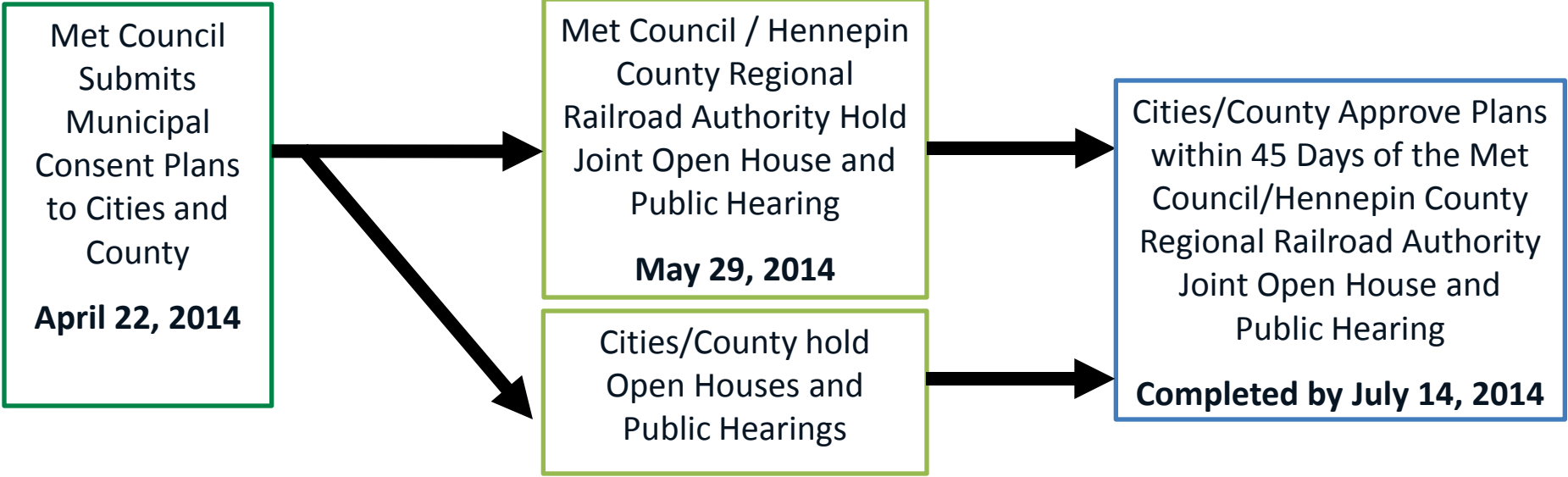


# Project Budget

- SWLRT Budget: \$1.673B - \$1.683B
- Cost Drivers:
  - 16 stations, 15.8 miles of LRT with Mitchell Road Station serving as the westernmost station
  - Shallow LRT tunnels in Kenilworth Corridor with LRT bridge over channel
  - Advancing construction one year/opening 2019

# Next Steps: Municipal Consent

# Municipal Consent Process



# SWLRT Key Milestones: April 2014

Project Milestone	April 2014
METRO Green Line Opening	June 14, 2014
Met Council Approval	April 9, 2014
Municipal Consent	Q2 2014
Final Engineering	Q2/Q3 2015
Full Funding Grant Agreement	Q2/Q3 2016
Revenue Operation	2019

# Hennepin County Community Works



**SOUTHWEST LRT**  
community works

green means go.

connecting people to jobs, housing, shopping, and fun

# Southwest LRT Community Works

## 2013 Accomplishments



St. Louis Park  
MINNESOTA



MINNEHAHA CREEK  
WATERSHED DISTRICT



# Transitional Station Area Action Plans

Intended to promote opening day readiness by bridging the gap between current conditions and future needs by addressing:

- ❖ Station platform locations
- ❖ Park and ride sites
- ❖ Future development potential
- ❖ Access and circulation planning
- ❖ Infrastructure planning
- ❖ Stormwater management options



*Transitional Station Area Action Plan recommendations for opening day in the Edén Prairie Town Center station area.*

***Created short-term plans that achieve long-term visions***

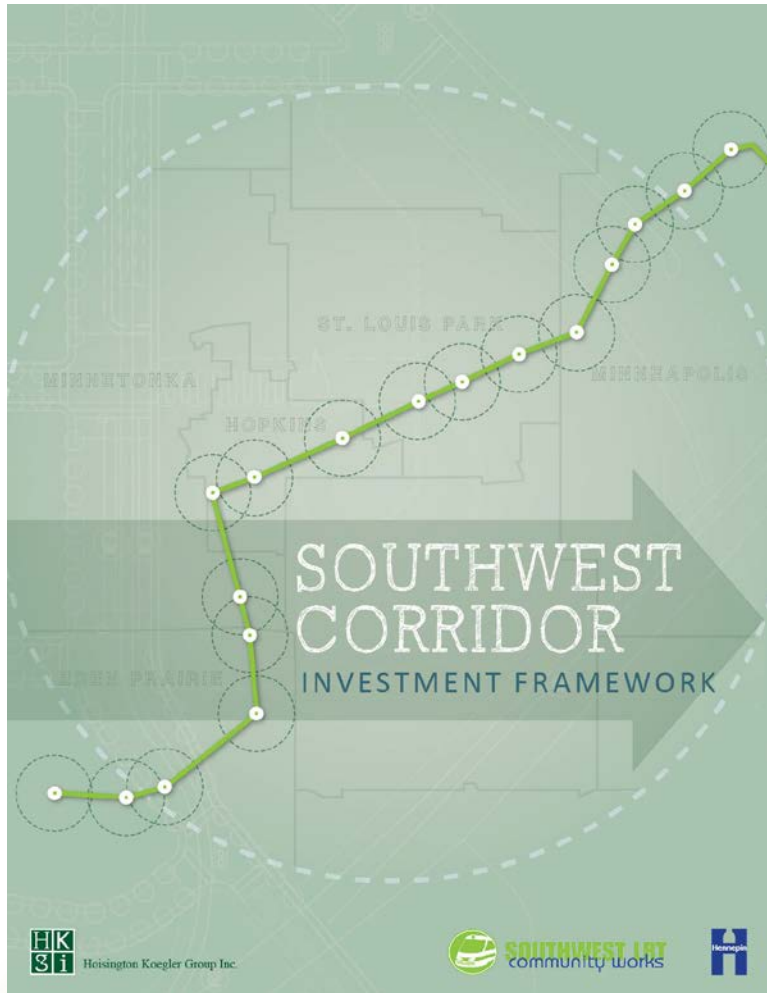


**SOUTHWEST LRT**  
community works

[www.southwesttransitway.org](http://www.southwesttransitway.org)



# Southwest Corridor Investment Framework



- ❖ Background
- ❖ Corridor Characterization
- ❖ 17 Transitional Station Area Action Plans (TSAAP)
- ❖ Implementation



**SOUTHWEST LRT**  
community works

[www.southwesttransitway.org](http://www.southwesttransitway.org)





# Expanding Knowledge:LISC Workshops

- ❖ Workshop series at Wooddale & Town Center stations
- ❖ Engage residents in interactive exercise(s)
- ❖ Purpose to broaden understanding of development issues/opportunities



# Creating Housing Opportunities

## Corridor Wide Housing Strategy

- ❖ Corridor Wide Housing Inventory – Spring 2013
- ❖ Partner city presentations – Fall 2013
- ❖ Next Step – Gap Analysis



# Expanding Partnerships

## *Southwest Investment Partnership*

A group of major employers along the Southwest Corridor who are identifying & prioritizing private sector investment to align with public sector transit and placemaking investments.



## *HUD Sustainable Communities Peer Exchange*

National forum to share lessons learned and exchange information with peer regions: Seattle, Denver and Miami.



**SOUTHWEST LRT**  
community works

[www.southwesttransitway.org](http://www.southwesttransitway.org)



# Guiding Principles for Investment

- ❖ Partner for Effective Planning and Implementation
- ❖ Create Great Quality Transit Oriented Development and Achieve Unique, Vibrant Places
- ❖ Stimulate Employment and Economic Development
- ❖ Provide a Full Range of Housing Choices
- ❖ Strengthen Communities through Connections and Access to Opportunity
- ❖ Maintain and Improve Natural Systems
- ❖ Build Healthy Communities
- ❖ Enhance Tax Base



**SOUTHWEST LRT**  
community works

[www.southwesttransitway.org](http://www.southwesttransitway.org)





# Rail~volution 2013

Southwest CW presentation by Meg McMonigal St. Louis Park  
“Corridor Collaboration and Innovation: Don’t Go It Alone”

Midtown Community Works presentation by Commissioner Dorfman  
“Old Corridors for New Green Purposes”

Southwest MindMixer site featured at closing ceremony as example of  
innovative engagement

Attendance by over 140 Minnesotans – uff da!



[www.southwesttransitway.org](http://www.southwesttransitway.org)



# Marketing the Corridor

## Station Area Profiles



# Walking the Corridor

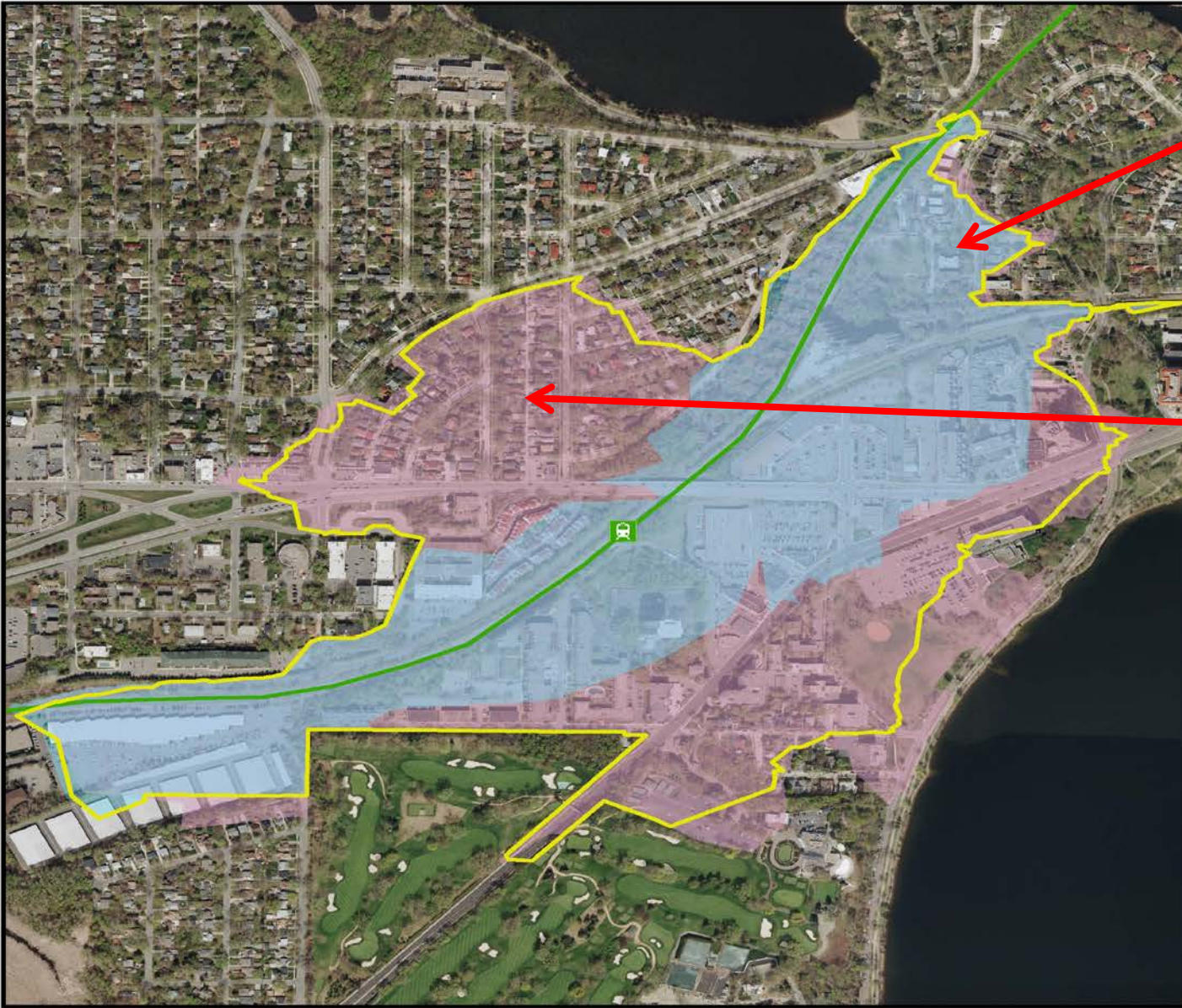
---

## Walk Shed Analysis Tool

- ❖ Ability to graphically map the 10 minute walk shed
- ❖ Existing Conditions & Opening Day (2018)
- ❖ Automatically adjusts as infrastructure is built
- ❖ Able to populate maps with amenities (schools, libraries, clinics, jobs, etc.)



# Urban Walk Shed – West Lake Station

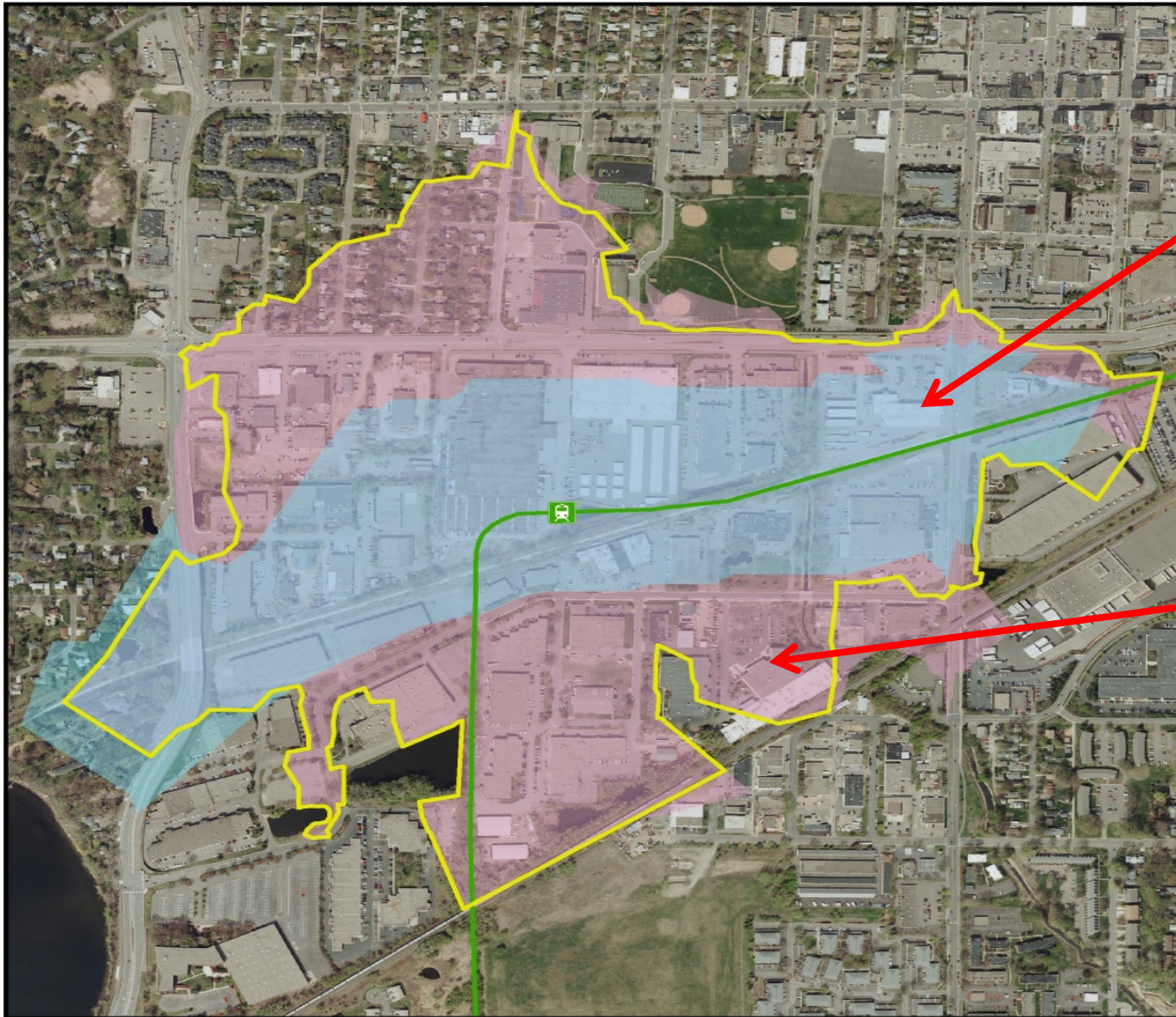


Existing access area

Opening Day access area



# Suburban Walk Shed – Shady Oak Station



Existing access area

Opening Day access area

# Implementing Projects

---



*Towerlight (Wooddale Station)*



*UHG Building (Opus Station)*



*Gallery Flats (Hopkins Station)*

# Implementing Projects



*Bigos Development (West Lake Station)*



*National Marrow Donor Program/Be The Match  
(Royalston Station)*



*Plaza (Target Field Station)*

Courtesy of Perkins Eastman, Feb. 2013  
Artist depiction. Design subject to change.

# Engaging the Public

Open Houses, advisory committee meetings, and workshops



**SOUTHWEST LRT**  
community works

[www.southwesttransitway.org](http://www.southwesttransitway.org)



# Engaging the Public

Listening Sessions, neighborhood events, & special meetings



**SOUTHWEST LRT**  
community works

[www.southwesttransitway.org](http://www.southwesttransitway.org)



# Engaging the Public



## JOIN IN SOUTHWEST LRT STATION AREA PLANNING JOIN OUR COMMUNITY.

Welcome to the interactive site for community dialogue about how areas around proposed Southwest LRT stations might change to take advantage of the coming LRT. Now is the time to offer your thoughts - before the train leaves the station!



Sign up with Facebook



Sign up with LinkedIn



Sign up with Google

**Mindmixer** ([www.swbeyondtherails.com](http://www.swbeyondtherails.com)) – online dialogue about station areas and public places



[www.southwesttransitway.org](http://www.southwesttransitway.org)



# Engaging the Public



brought to you by  
Mississippi County



## Beyond the Rails

MOBILITY • ECONOMIC DEVELOPMENT • HOUSING

ABOUT MAP COMMUNITY WORKS STATIONS GET INVOLVED CONTACT US

Station Area Planning *Give your input!*

Search

### Quick Links

- Committees & Meetings
- LRT Station Areas
- Engineering & Construction

*get updates!*

Email address

Back to all stations | Choose another station...



## ROYALSTON STATION

### Current Planning Maps

Transitional Station Area Planning (TSAAP) began in 2012. The maps shown here are products of that planning work and part of the full [Southwest Corridor Investment Framework](#).

#### Background - Existing Conditions



#### Future Plans - Opening Day (2018) and Long Term



### History of Planning Work

Lorem ipsum dolor sit amet, consectetur adipiscing elit. Inde sermone vario sex illa a Dipylo stadia confestim. Tum ille timide vel potius verecunde Facio, inquit. At quanta conantur! Mundum hunc omnem oppidum esse nostrum! Incendi igitur eos, qui audiunt, vides. Ita graviter et severe voluptatem secrevit a bono.

Haec para/doca illi, nos admirabilia dicamus.

Varietates autem inurasque fortunae facile veteres philosophorum praeceptis instituta vita superabat. Hoc ille tuus non vult omnibusque ex rebus voluptatem quasi mercedem exigit. Haec quo modo conveniant, non sane intellego. Omnes enim iucundum motum, quo serius hilaritetur. Etenim semper illud extra est, quod arte comprehenditur. At, illa, ut vobis placet, [partem quandam tuetur](#), reliquam deserit. Cum id quoque, ut cupiebat, audivisset, evelli iussit eam, qua erat transfusus, hastam. Graecis hoc modicum est: Leonidas, Epaminondas, tres aliqui aut quattuor;

Tubulum fuisse, qua illum, cuius is condemnatus est rogatione, P.

Cur tantas regiones barbarorum pedibus oblit, tot maria transiisti? Nemo nostrum itius generis asotos iucunde putat vivere. Non igitur de improbo, sed de callido improbo quaerimus, qualis Q. Quae qui non vident, nihil unquam magnum ac cognitione dignum amaverunt. Paulum, cum regem Persem captum adduceret, eodem flumine investit? Quorum sine causa fieri nihil putandum est. Color egregius, integra validudo, summa gratis, vita denique conferta voluptatum omnium varietate. Nunc vides, quid faciat.

### Additional Links

- [partem quandam tuetur](#)
- [reliquam deserit. Cum id quoque](#)
- [ut cupiebat, audivisset](#)





# 2014 Implementation Activities

---

Implement Investment Framework <i>(infrastructure projects)</i>	Q1-Q4
Conduct Strategic Acquisitions for TOD	Q1-Q4
Develop Master Development Strategies	Q1-Q4
Complete Corridor Wide Housing Gap Analysis	Q1-Q2
Prepare New Starts Application	Q1-Q2
Conduct Employment TOD Pilot Project(s)	Q1-Q4
Market the Corridor & TOD Opportunities	Q2-Q4
Conduct Strategic Outreach/Communications <i>(general public, business community, developers, &amp; traditionally under represented)</i>	Q1-Q4



**SOUTHWEST LRT**  
community works

[www.southwesttransitway.org](http://www.southwesttransitway.org)



# Community Advisory Committee Next Steps

# Committee Next Steps

- No meetings during Municipal Consent
- Seek new member nominations in July to address the needs of next project phase
- Hold kick-off meeting in September
- Areas of focus:
  - Environmental process
  - Station design and access
  - OMF
  - Multimodal connections
  - Art/landscaping

# Member and Committee Reports/Public Forum

# More Information

Online:

[www.SWLRT.org](http://www.SWLRT.org)

Email:

[SWLRT@metrotransit.org](mailto:SWLRT@metrotransit.org)

Twitter:

[www.twitter.com/southwestlrt](http://www.twitter.com/southwestlrt)

