

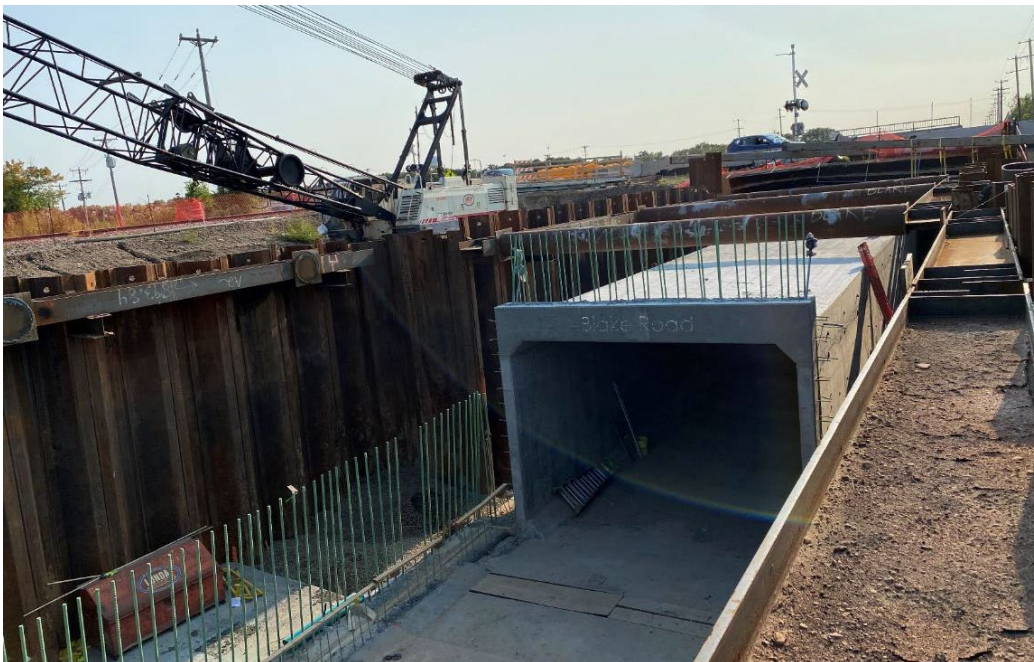
Construction Update: October 1, 2021

Web: swlrt.org

Twitter: [@SouthwestLRT](https://twitter.com/SouthwestLRT)

Construction Hotline: 612-373-3933

Weekly Construction Photo: Blake Road Regional Trail Underpass in Hopkins



The Blake Road Regional Trail underpass is being constructed in two halves. With the west side of the tunnel structure complete, crews are building the east half. As pictured, the east half structure is now nearly complete, and crews can work to bury the underpass and complete finishing details.

[Eden Prairie](#)

Eden Prairie Construction: Map 1 of 2



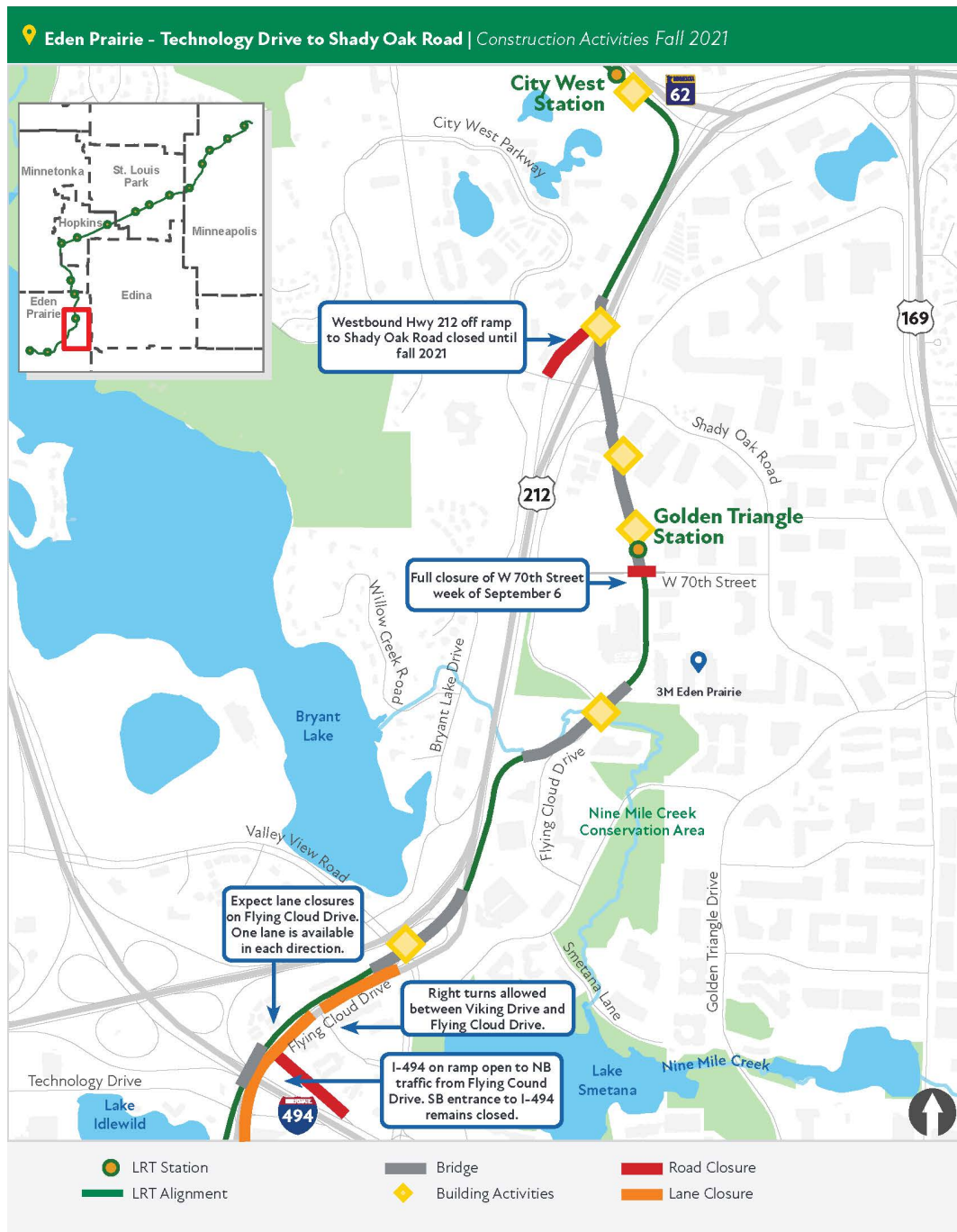
SouthWest Station to Eden Prairie Town Center Station

Construction Overview: At the SouthWest Station we are constructing a new park-and-ride ramp adjacent to the existing ramp and a combined bus and LRT station. Moving east, the Prairie Center Drive LRT Bridge extends from the SouthWest Station area over Technology Drive and Prairie Center Drive. Moving east, LRT will enter the Eden Prairie Town Center Station area.

Current activities to expect in this area:

- Construction of the new SouthWest Station parking ramp and waiting area continues to advance, with the main structure mostly in place.
- Expect intermittent eastbound, right lane closures along Prairie Center Drive, during the week of October 4, between the Highway 212 bridge and Technology Drive to complete overhead bridge construction.

Eden Prairie Construction: Map 2 of 2



LRT Bridge at I-494 to Shady Oak Road

Construction Overview: In this portion of Eden Prairie, an LRT bridge will cross over I-494, parallel to Flying Cloud Drive; this bridge is almost complete. Flying Cloud Drive is being reconstructed and LRT track installed. LRT will travel on bridges over Flying Cloud Drive and Nine Mile Creek. The Golden Triangle Station is being constructed as well as an LRT bridge over Shady Oak Road and Highway 212.

Current activities to expect in this area:

- There will be intermittent lane closures on I-494 near the Flying Cloud Drive bridge the week of October 4 to complete overhead concrete work on the roadway bridge.
- From Friday, October 8 at 10:00 PM to 5:00 AM on Monday, October 11 there will be a full eastbound closure of I-494 between Highway 169 and Highway 212. Following this closure, there will be a full westbound closure from Friday, October 15 at 10:00 PM to 5:00 AM on Monday, October 18. These closures are needed to advance bridge work for the roadway above.
- The following closures will occur on Tuesday, October 5 between 6:00 AM and 2:00 PM along Shady Oak Road at Highway 212 to place concrete sidewalks on the bridge:
 - The Shady Oak Road on-ramp to eastbound Highway 212;
 - A full closure of Shady Oak Road between Flying Cloud Drive and the Highway 212 ramps. Traffic exiting from eastbound Highway 212 will be able to turn north (left) to cross Shady Oak Road.
 - [See Eden Prairie detour information.](#)
- Highway 62 has reopened between Shady Oak Road and Highway 212. Both eastbound lanes are open. Westbound traffic will be limited to one lane into November.
- The Shady Oak Road on-ramp to eastbound Highway 62 has reopened.

Ongoing:

- The I-494 off-ramp to Flying Cloud Drive is closed for the 2021 construction season. The eastbound I-494 on-ramp from Flying Cloud Drive is open. Traffic traveling westbound on Flying Cloud Drive should follow the posted detours to access eastbound I-494. [See Eden Prairie detour information.](#)
- Flying Cloud Drive is reduced to one lane in both directions between Town Center Place to Valley View Road. Left turns in and out of Technology Drive at the Flying Cloud Drive intersection are not allowed until later this year.
- West 70th Street is closed until mid-October to install LRT tracks and other infrastructure. Through traffic between Flying Cloud Drive and Shady Oak Road is detoured. Business access is available. [See Eden Prairie detour information.](#)
- The westbound Highway 212 off-ramp to Shady Oak Road will remain closed through the end of the construction season.

Minnetonka Construction: Map 1 of 1



City West Station in Eden Prairie to Shady Oak Station in Hopkins

Construction Overview: The City West Station area continues with preparation work for retaining walls. Major elements in this segment include an LRT tunnel under Highway 62, the Opus Station, many large retaining walls, the Smetana/Feltl roadway bridges over LRT and the Hopkins/Minnetonka LRT Bridge ending at the Shady Oak Road Station.

Upcoming or Recently Completed

- The new segment of Bren Road East will open on Monday, October 4. Red Circle Drive will be closed to westbound traffic near the Yellow Brick Road Preschool as the second phase of the nearby pedestrian underpass construction begins. Drivers exiting Opus Park along East Bren Road will still be able to access Red Circle Drive and Shady Oak Road. Yellow Circle Drive is configured as a two-way road during this phase of construction to accommodate through traffic and local businesses. [See Minnetonka detour maps here.](#)
- On Monday, October 4 the bypass from Smetana Road to Feltl Road will be removed to complete the reconstruction of Smetana Road. Access to Feltl Road will only be allowed from the north in Opus Park. Smetana Road will remain closed until mid-October as crews complete

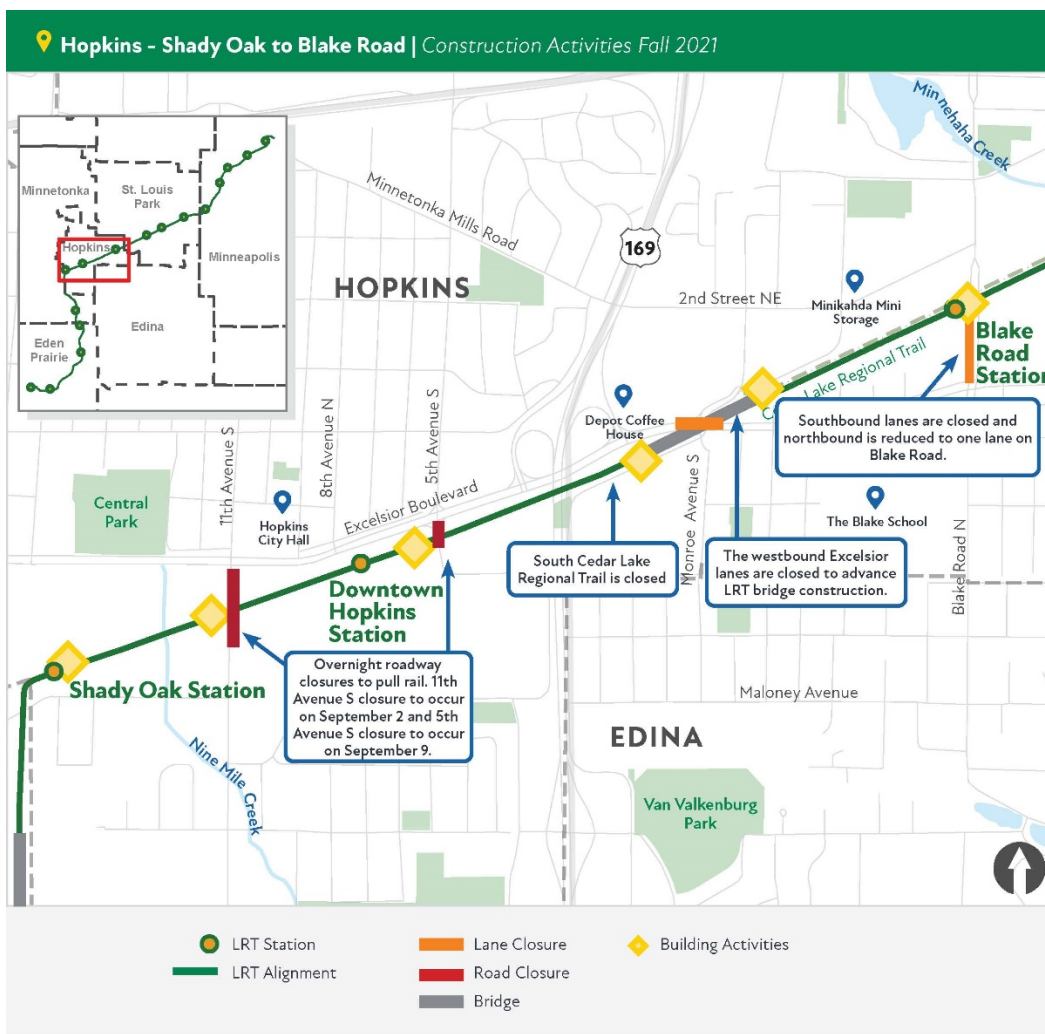
construction of the bridge, grading, and roadway restoration. After Smetana Road reopens, Felt Road will remain closed until summer 2022. [See Minnetonka detour maps here.](#)

Ongoing:

- The westbound lane on Green Circle Drive near the intersection with Bren Road West is closed until spring 2022.
- The City of Minnetonka has closed Blue Circle Drive to reconstruct a bridge. This work is anticipated to continue through November. [See Minnetonka detour maps here.](#)
- Crews continue to work on the Minnetonka-Hopkins LRT bridge. Expect noise from piling as bridge pier construction continues.

Hopkins

Hopkins Construction: Map 1 of 1



Shady Oak Road Station to Blake Road Station

Construction Overview: There are three stations in Hopkins: Shady Oak Road, Downtown Hopkins and Blake Road. Major structures in Hopkins include an LRT bridge over Excelsior and a regional trail underpass at Blake Road. In addition to LRT track construction there is also freight rail and regional trail work in the area. There are multiple LRT and freight railroad crossings at roadways.

Upcoming or Recently Completed

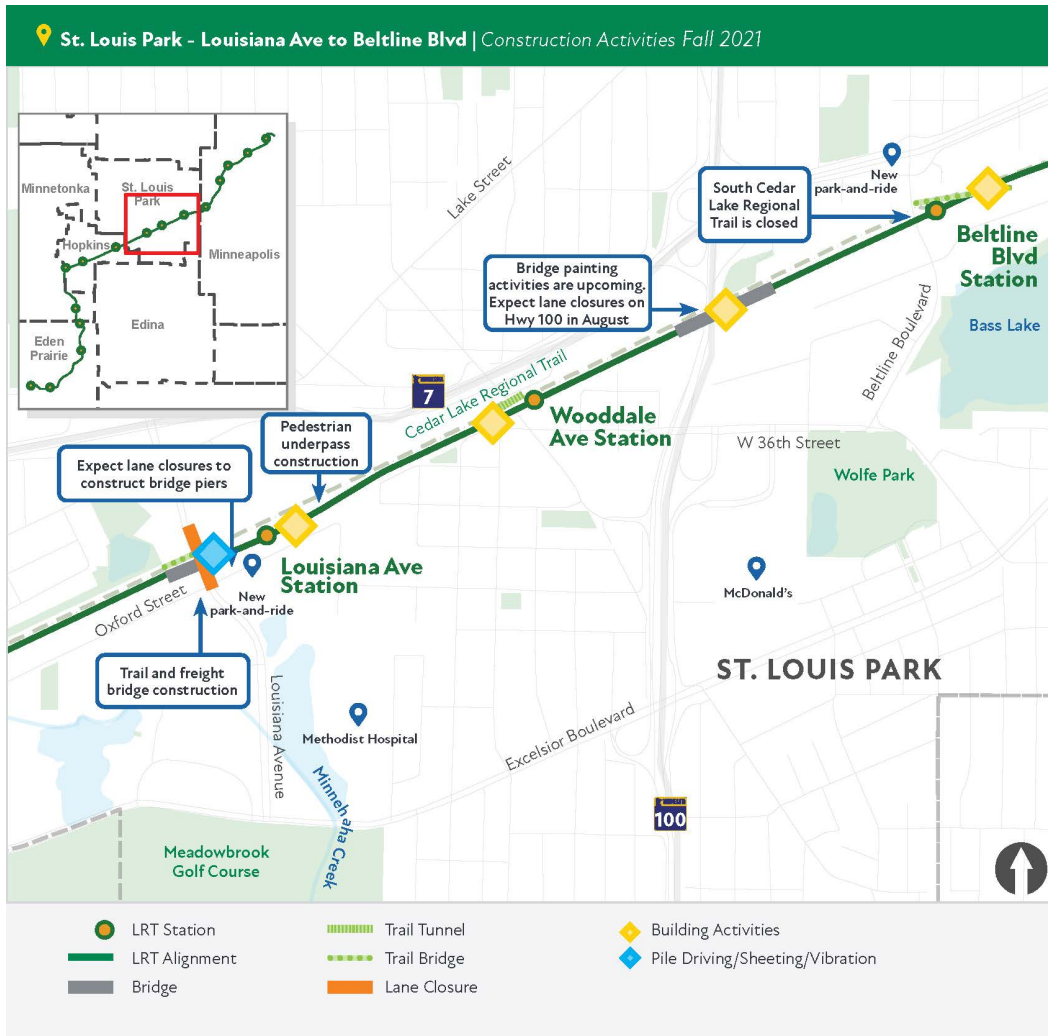
- In mid-October both directions of Excelsior Boulevard will be closed at the Jackson Street and Milwaukee Avenue intersection to advance construction of the LRT bridge. Jackson Street and Milwaukee Avenue will be restricted to right-turns only. This closure will last approximately two weeks, after which the roadway will reopen.

Ongoing:

- Westbound Excelsior Boulevard is closed at Jackson Avenue. One eastbound lane is closed at this location. From Milwaukee Street and Jackson Avenue, only right turns are allowed onto Excelsior Boulevard; there are no north-south through movements. Traffic will remain detoured while crews advance the construction of the LRT bridge over Excelsior Boulevard. These closures will remain until the full closure of the roadway in mid-October. [See Hopkins detour maps.](#)
- The construction of the regional trail underpass at Blake Road North continues. Blake Road traffic has been reduced to one northbound lane between Excelsior Boulevard and 2nd Street N.E. while southbound Blake Road traffic is detoured at 2nd Street N.E. It is anticipated that Blake Road will be open to southbound traffic by the end of the construction season. [See Hopkins detour maps.](#)

[*Visit our website for more details and visuals of construction activities in Hopkins.*](#)

St. Louis Park Construction: Map 1 of 1



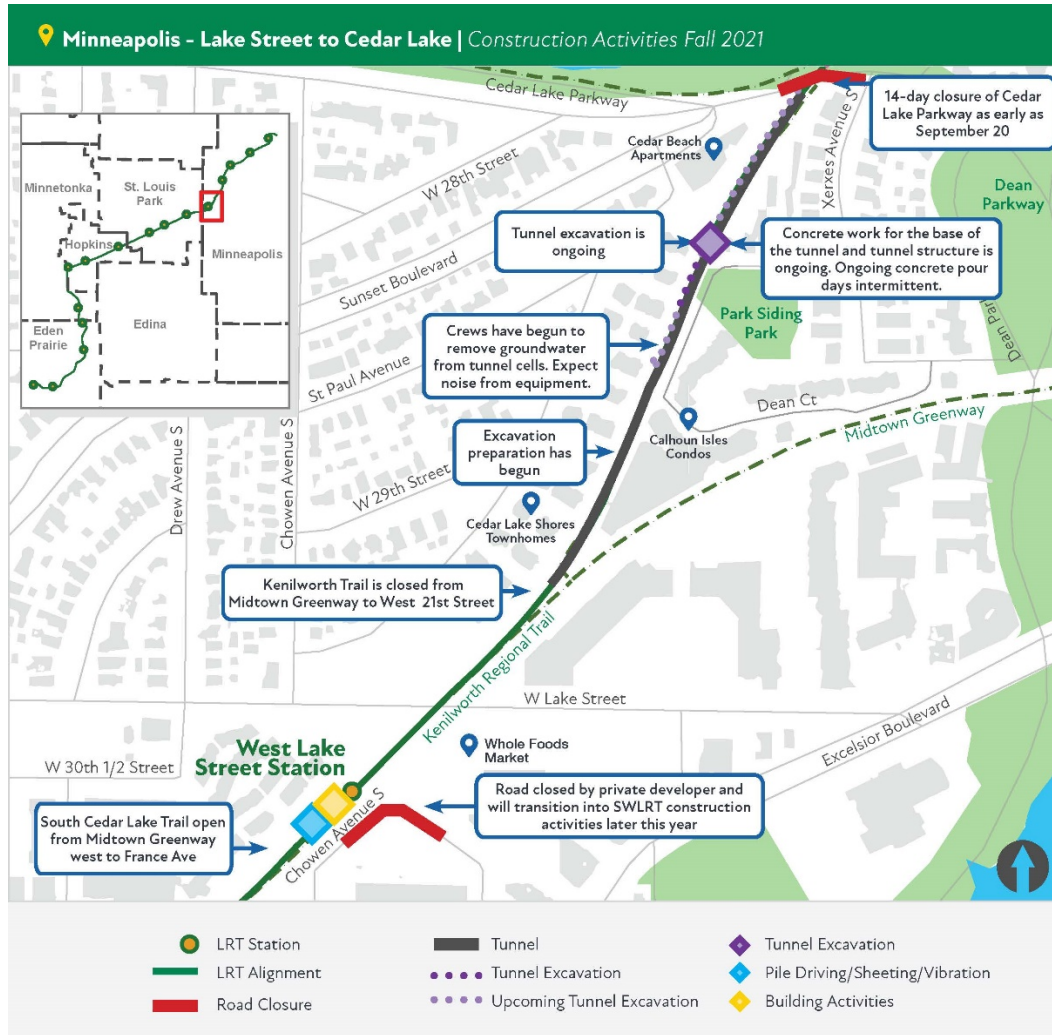
Louisiana Avenue to Beltline Boulevard

Construction Overview: Like in Hopkins, the project includes the construction of LRT track, freight rail track, and the regional trail. There are also three stations in St. Louis Park: Louisiana Avenue, Wooddale Avenue and Beltline Boulevard. Structures in this area include LRT and freight rail bridges over Louisiana Avenue, a connection between freight lines, a pedestrian/trail underpass east of Louisiana Avenue, freight, LRT and trail bridges over Minnehaha Creek, a regional trail underpass at Wooddale Avenue, freight, LRT and trail bridges over Highway 100 and a regional trail bridge crossing over Beltline Boulevard.

Ongoing:

- Crews are advancing construction of the LRT bridge over the Minnehaha Creek; expect pile driving as work progresses.
- Expect lane closures along Louisiana Avenue between West Lake Street and Oxford Street while crews advance bridge construction. Piling operations are expected.
- Crews continue to advance the freight rail connection in the Louisiana Avenue area.

[Visit our website for more details and visuals of construction activities in St. Louis Park.](#)

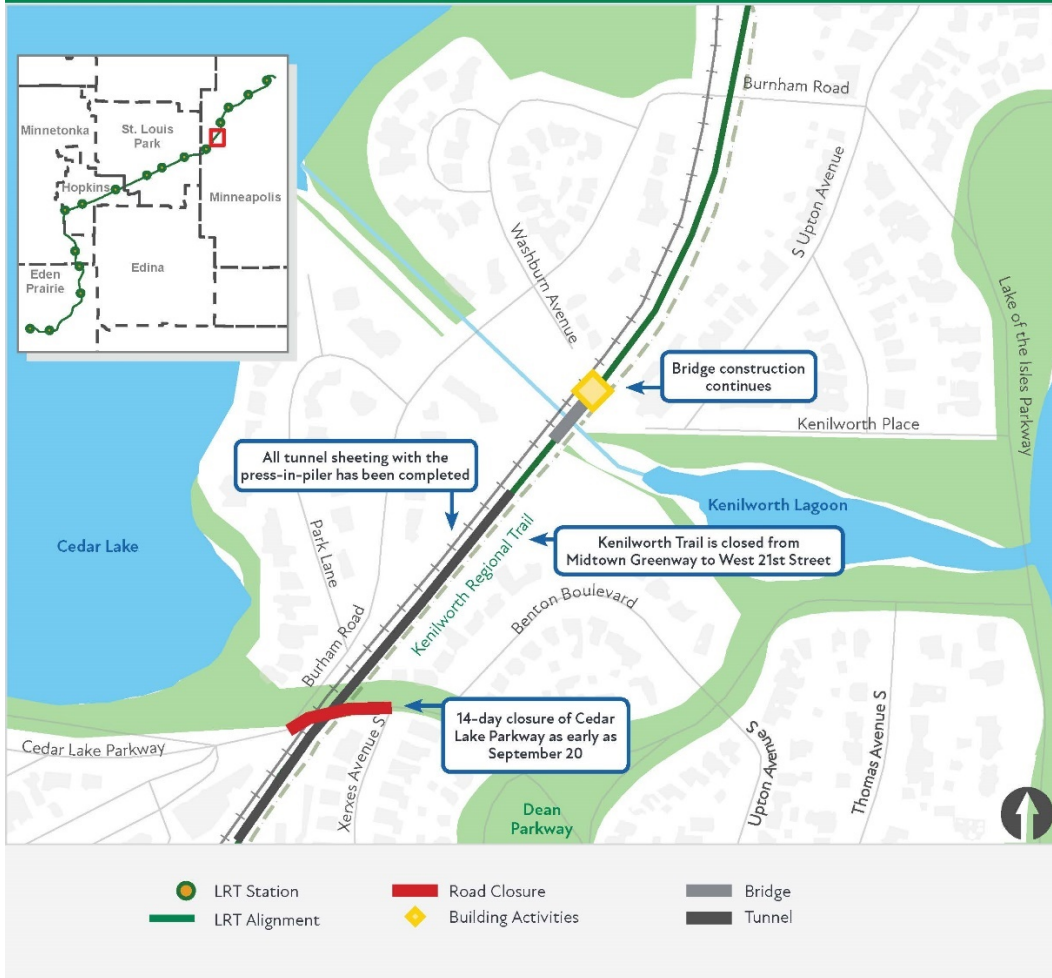


Chowen Avenue to Cedar Lake Parkway

Construction Overview: In addition to the West Lake Street Station, crews will be reconstructing the Chowen/Abbott roadway connection. The LRT tunnel is being constructed in this area, running between the West Lake Street Station and the Cedar Lake Channel. To complete work in this area there is also freight rail infrastructure and trail facilities.

Current activities to expect in this area:

- The Kenilworth LRT tunnel site continues to be active. Concrete work and excavation activities are constant between Lake Street and Cedar Lake Parkway. Grouting work to fill gaps between sheets continues to progress. It is expected that this work will conclude later this month.



Cedar Lake Parkway to Burnham Road

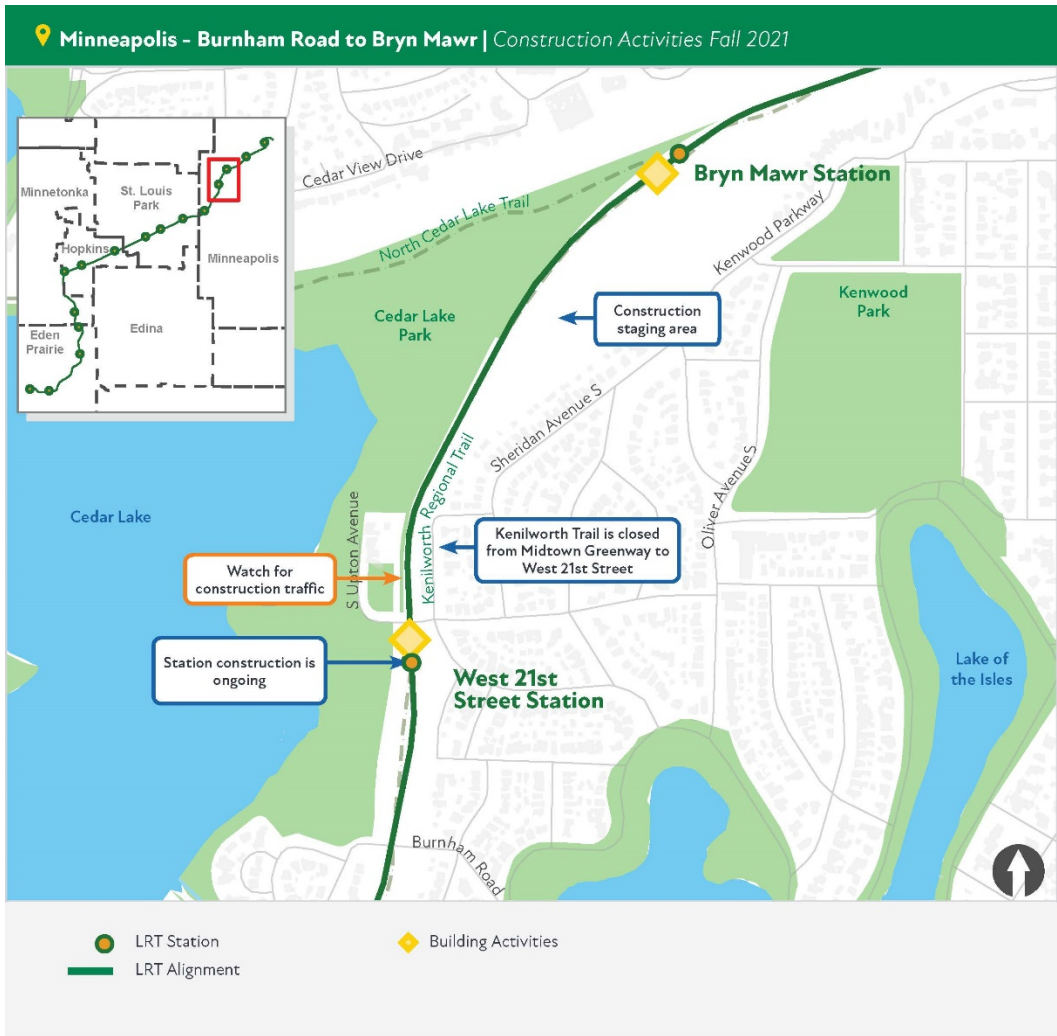
Construction Overview: The LRT tunnel continues in this segment. Other elements include the construction of retaining walls (complete), and freight, LRT and trail bridges over the Cedar Lake Channel.

Current activities to expect in this area:

Upcoming or Recently Completed

- Cedar Lake Parkway will be open to local traffic during the Twin Cities Marathon scheduled to take place to the east of the rail corridor on Sunday morning, October 3. The Parkway will then close on Monday, October 4 to complete utility work during that week.
- The Minneapolis Park and Recreation Board has closed the Cedar Lake Channel for the fall season to conduct shoreline stabilization and naturalization work between Cedar Lake and the Burnham Road Bridge. During this closure, continue to expect LRT bridge construction over the Cedar Lake Channel this fall.

Minneapolis Construction: Map 3 of 5



Burnham Road to Bryn Mawr Station

Construction Overview: In addition to the LRT, freight rail and trail construction, this area has two stations: West 21st Street and Bryn Mawr. The Bryn Mawr Station includes a pedestrian bridge that will extend over the freight tracks from the bluffs to the station platform.

Current activities to expect in this area:

- Construction at Bryn Mawr Station is continuing with excavation and pile installation to construct the pedestrian bridge. Retaining wall work on the bluff south of Wayzata Boulevard and Penn Avenue is expected to start in October.

Minneapolis Construction: Map 4 of 5



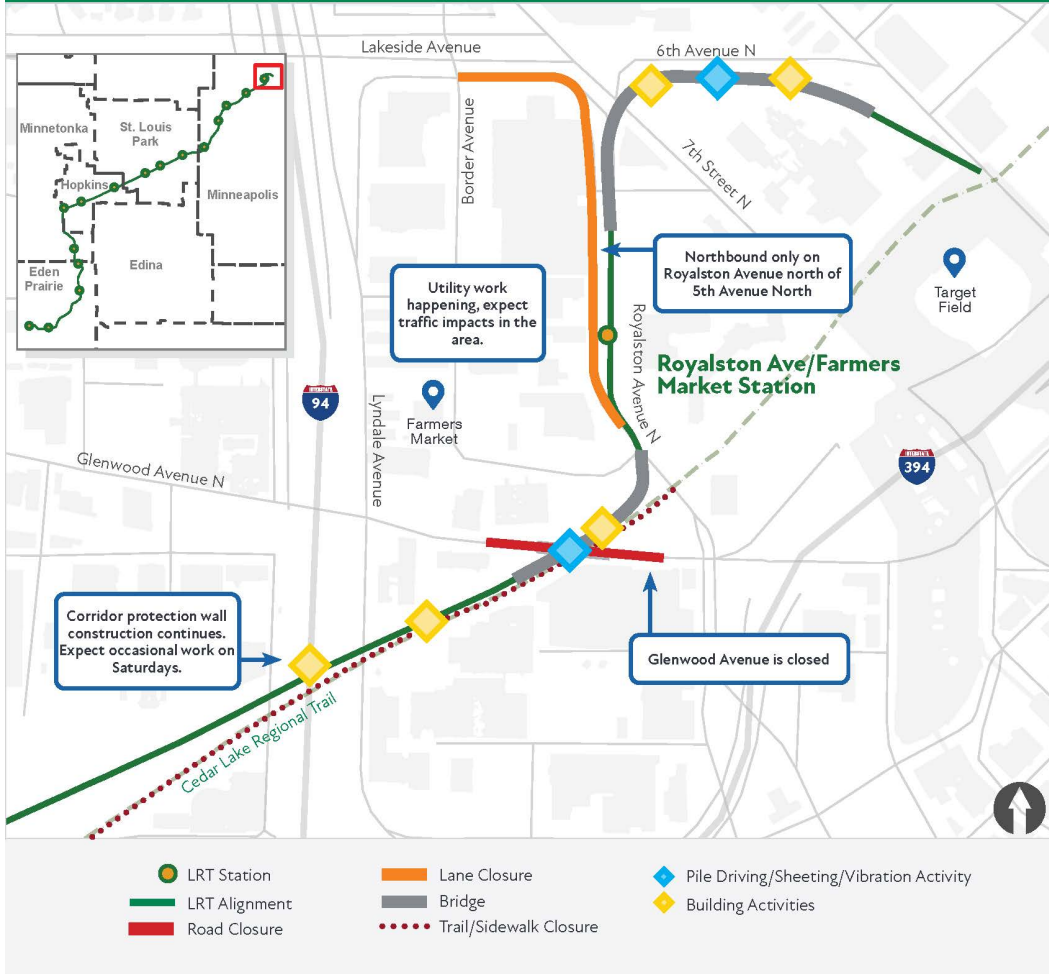
Bryn Mawr Station to Bassett Creek Valley Station Area

Construction Overview: There are two stations serving residents in this area; Bryn Mawr Station and the Bassett Creek Valley Station. In addition, area construction includes LRT track, trails and the corridor protection wall.

Current activities to expect in this area:

- The Luce Line Regional Trail bridge that crosses the BNSF rail corridor at Bryn Mawr Meadows Park is in process of being demolished. The bridge is expected to be closed for about one year, until fall 2022. It is being reconstructed to connect the new Bassett Creek Valley LRT Station with the park.
- Crews continue to build a corridor protection wall between Glenwood Avenue and Highway I-394, including work on Saturdays.

Minneapolis Construction: Map 5 of 5



Glenwood Avenue to Target Field Station

Construction Overview: LRT will cross a new Glenwood Avenue bridge at the roadway grade. To make that happen three bridges need to be constructed, freight rail shifted, and extensive retaining walls built. This area will see the development of the Royalston Avenue/Farmer’s Market Station, an LRT bridge crossing over North 5th Avenue and North 7th Street and LRT connecting to the Target Field Station. The Holden/Royalston/Border roadway loop will also be reconstructed with improvements.

Current activities to expect in this area:

- Glenwood Avenue between Lyndale Avenue North and North 12th Street remains closed. [See Minneapolis detour maps here.](#)
- Bridge pier work near 7th and 6th Avenues has resumed. This work entails high-vibration activities for sheeting installation and pile driving. This work is expected to continue through the construction season. Expect temporary lane closures on eastbound 6th Avenue.

Regional Trails

- Various trails within the Opus area are closed as crews advance many project elements.
- The South Cedar Lake LRT Trail in Hopkins and St. Louis Park will remain closed until 2022.
- Temporary trails near Chowen Avenue and West Lake Street remain in place. For your safety and the safety of our crews, please follow signage for the temporary trail and stay clear of the work zone.
- The Kenilworth Trail will remain closed until the completion of LRT tunnel construction. The date is yet to be determined.
- The Luce Line Regional Trail bridge that crosses the BNSF rail corridor at Bryn Mawr Meadows Park is closed for about one year, until fall 2022. A new bridge is being reconstructed to connect the new Bassett Creek Valley LRT Station with the park.
- The North Cedar Lake Trail east of Dunwoody Boulevard will remain closed through 2022.

Trail Detours: Minnesota River Bluffs, South Cedar Lake Parkway, Kenilworth, Cedar Lake Trail

Eden Prairie Sidewalk and Roadway Detours: Southwest Station, I-494 Ramps at Flying Cloud Drive, Upcoming Flying Cloud near West 70th

Minnetonka Roadway Detours: Opus area: Yellow Circle, Red Circle, Smetana Road

Hopkins Detours: Excelsior Blvd & Jackson Avenue

Minneapolis Roadway Detours: Glenwood Avenue, Royalston Avenue

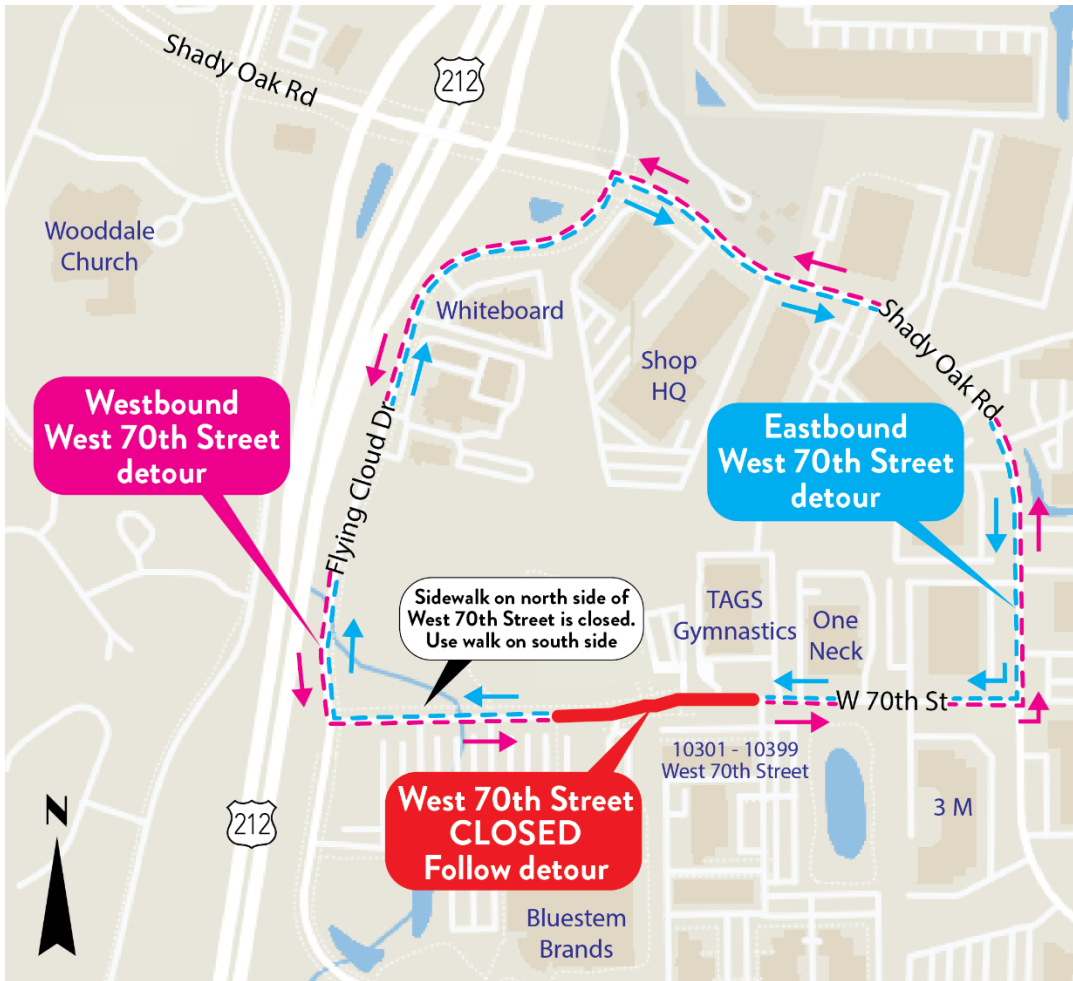
SouthWest Transit Station Pedestrian Detour in Eden Prairie



Flying Cloud Drive & Highway 494 Ramps in Eden Prairie



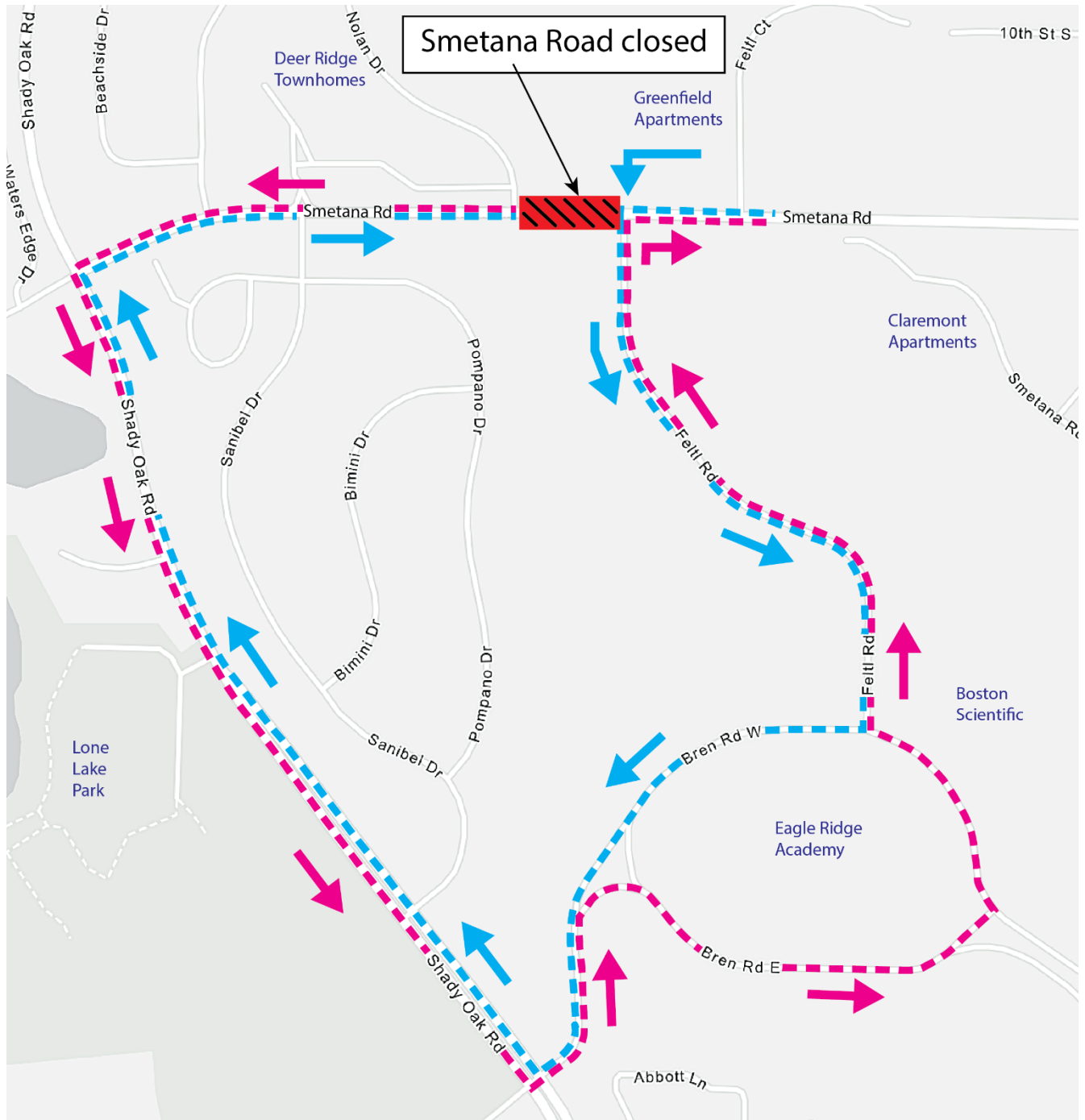
Upcoming West 70th Street in Eden Prairie



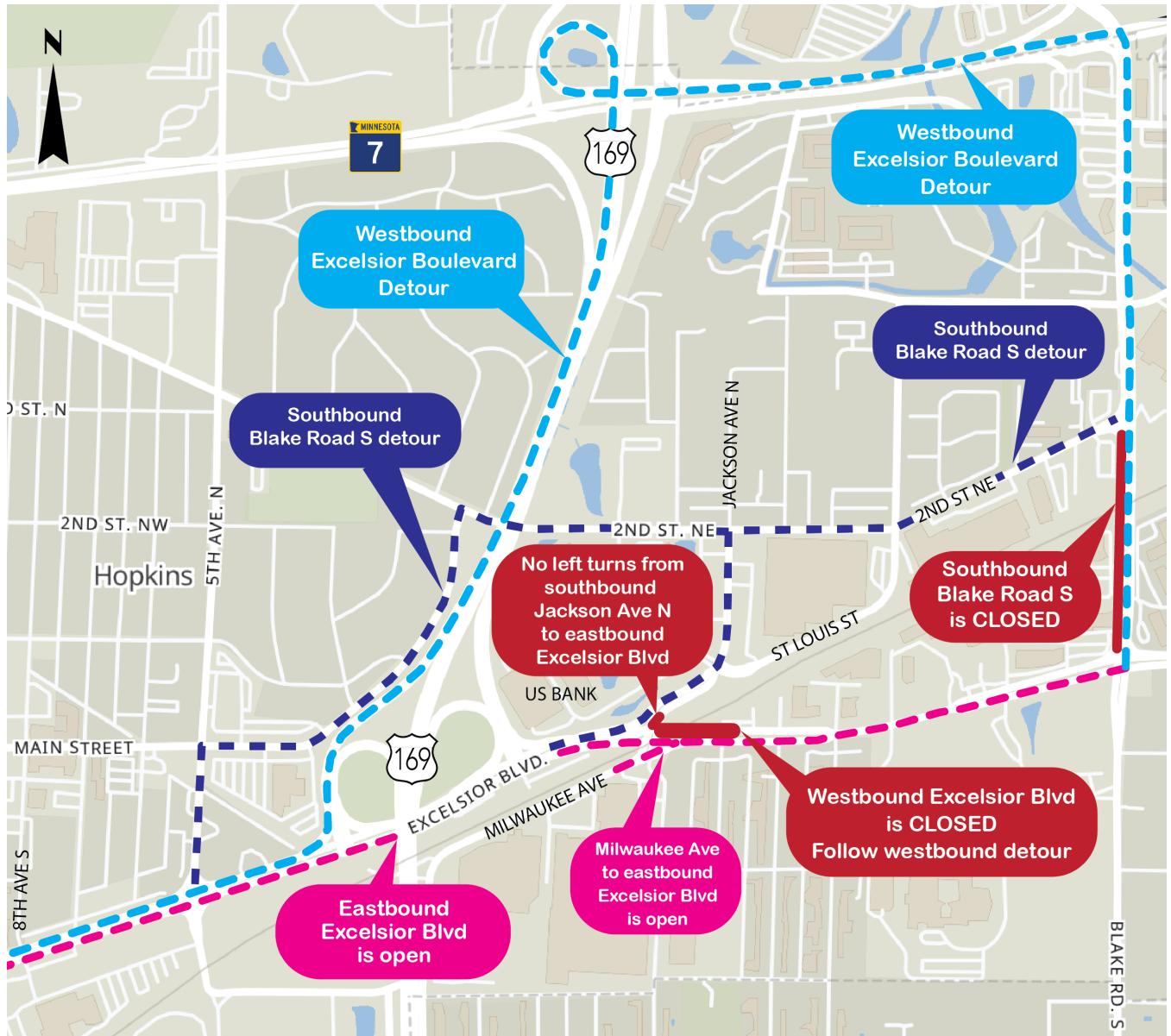
Opus Area Detours in Minnetonka: Red and Yellow Circles



Smetana Road in Minnetonka

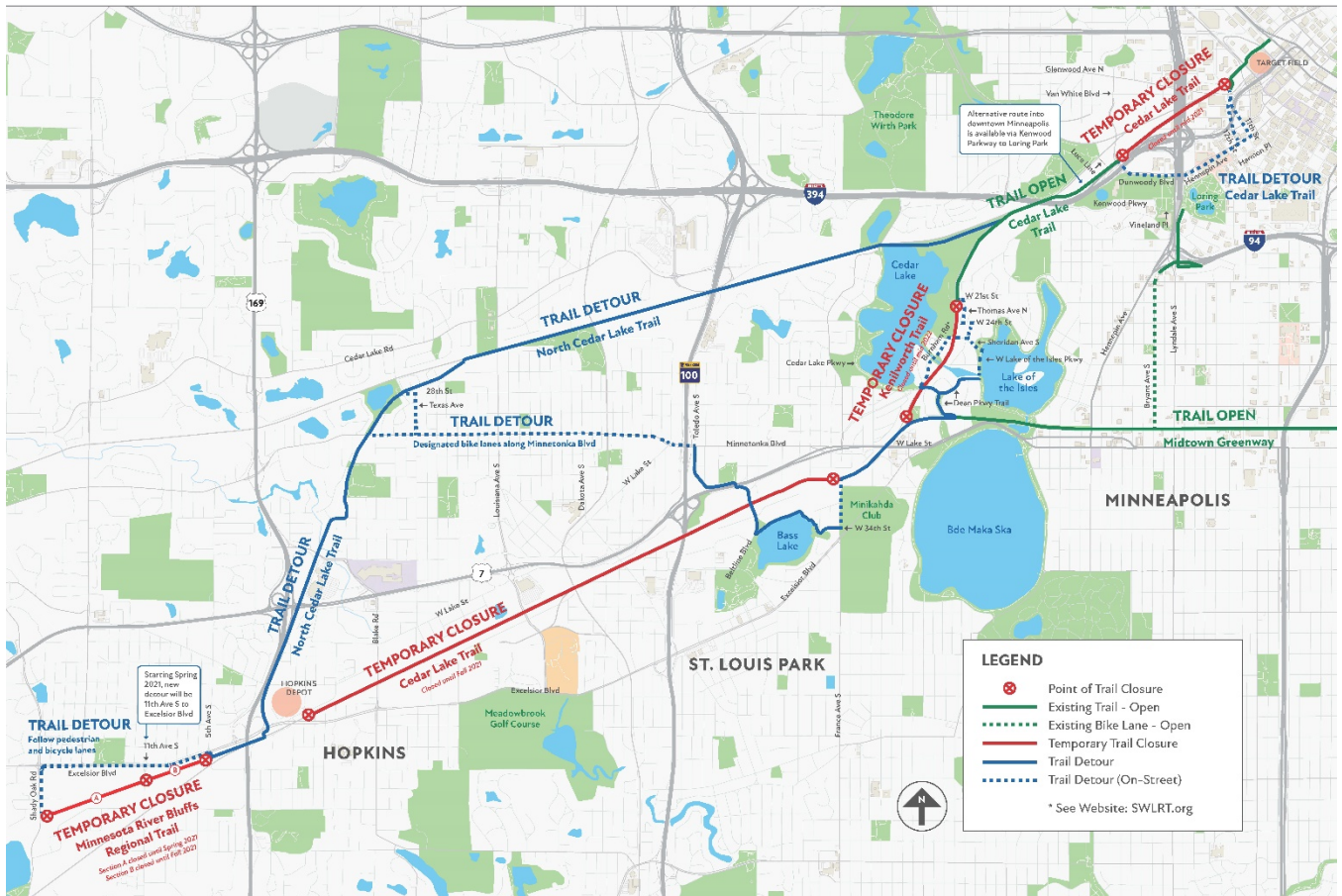


Blake Road in Hopkins



TRAIL DETOUR

MORE DETAILS: SWLRT.ORG



Cedar Lake Regional Trail in Minneapolis

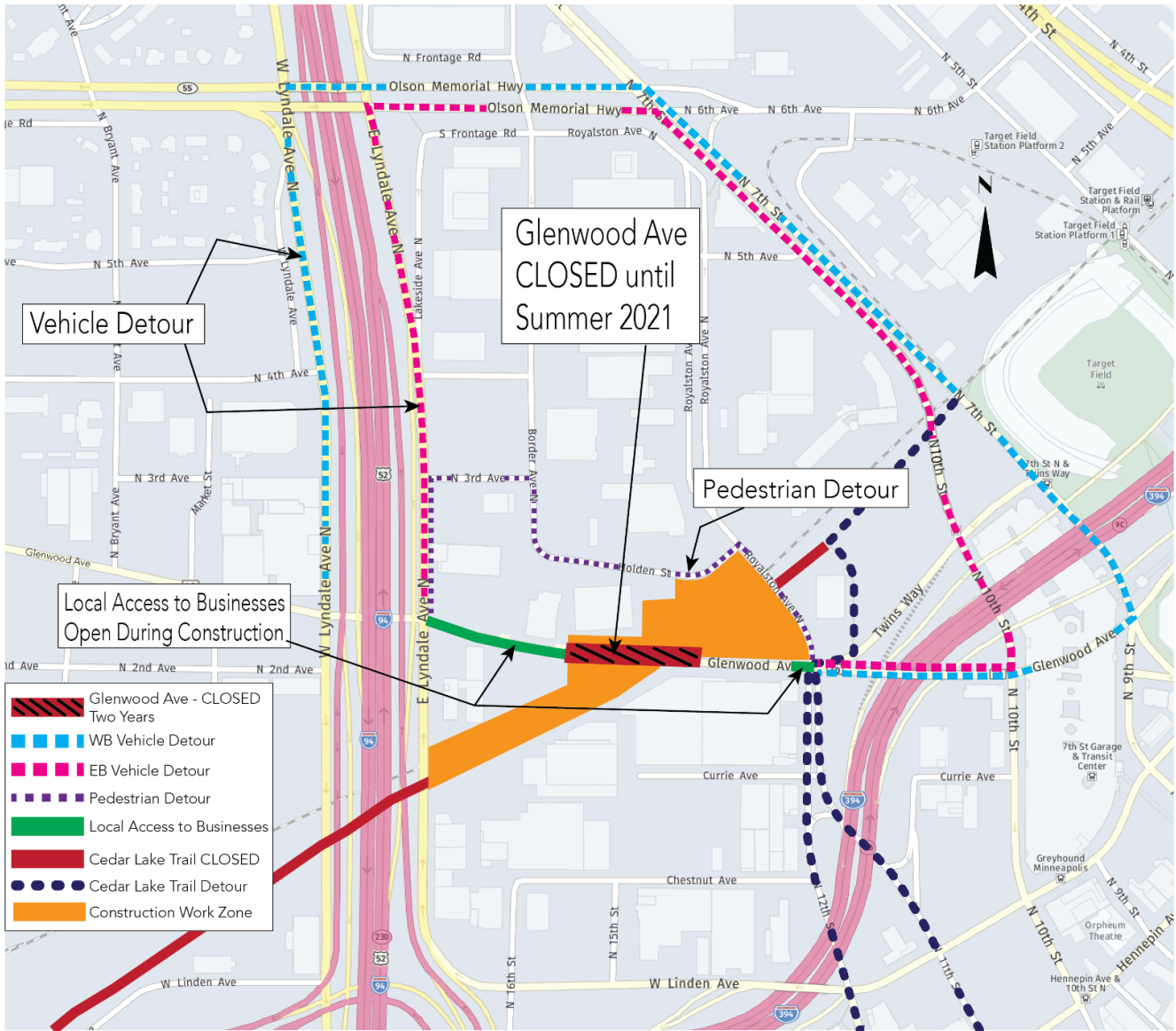
CEDAR LAKE REGIONAL TRAIL

TEMPORARY ALIGNMENT

MORE DETAILS: SWLRT.ORG



Glenwood Avenue Detour in Minneapolis



Royalston Avenue Detour in Minneapolis

