



Business Advisory Committee

March 7, 2017



Today's Topics

- Approval of Meeting Minutes
- TAAC Workshop Debrief
 - Golden Valley Video
- Construction Coordination
- Olson Memorial Highway Update
 - Stations
 - Trees
 - Floyd B Olson Statue
- Upcoming Open Houses



TAAC Workshop Debrief

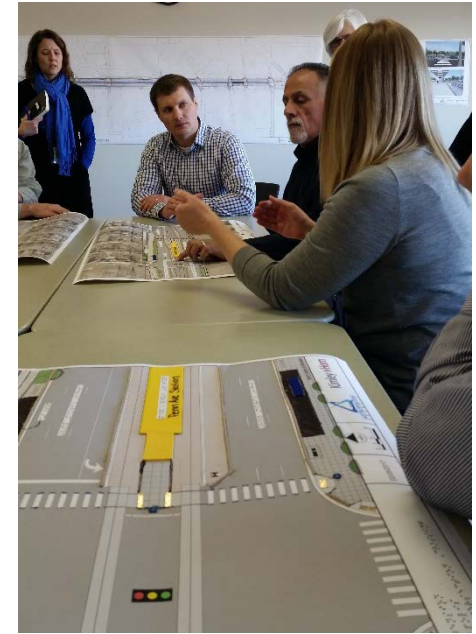


Transportation Accessibility Advisory Committee (TAAC) Workshop

- Topics included project overview, station platform overview, station access overview with breakout sessions on:
 - Penn Ave Station: signalized crossing, “Z” crossings, cycle track
 - Golden Valley Rd Station: navigation and access



TAAC Workshop



TAAC Workshop Outcomes

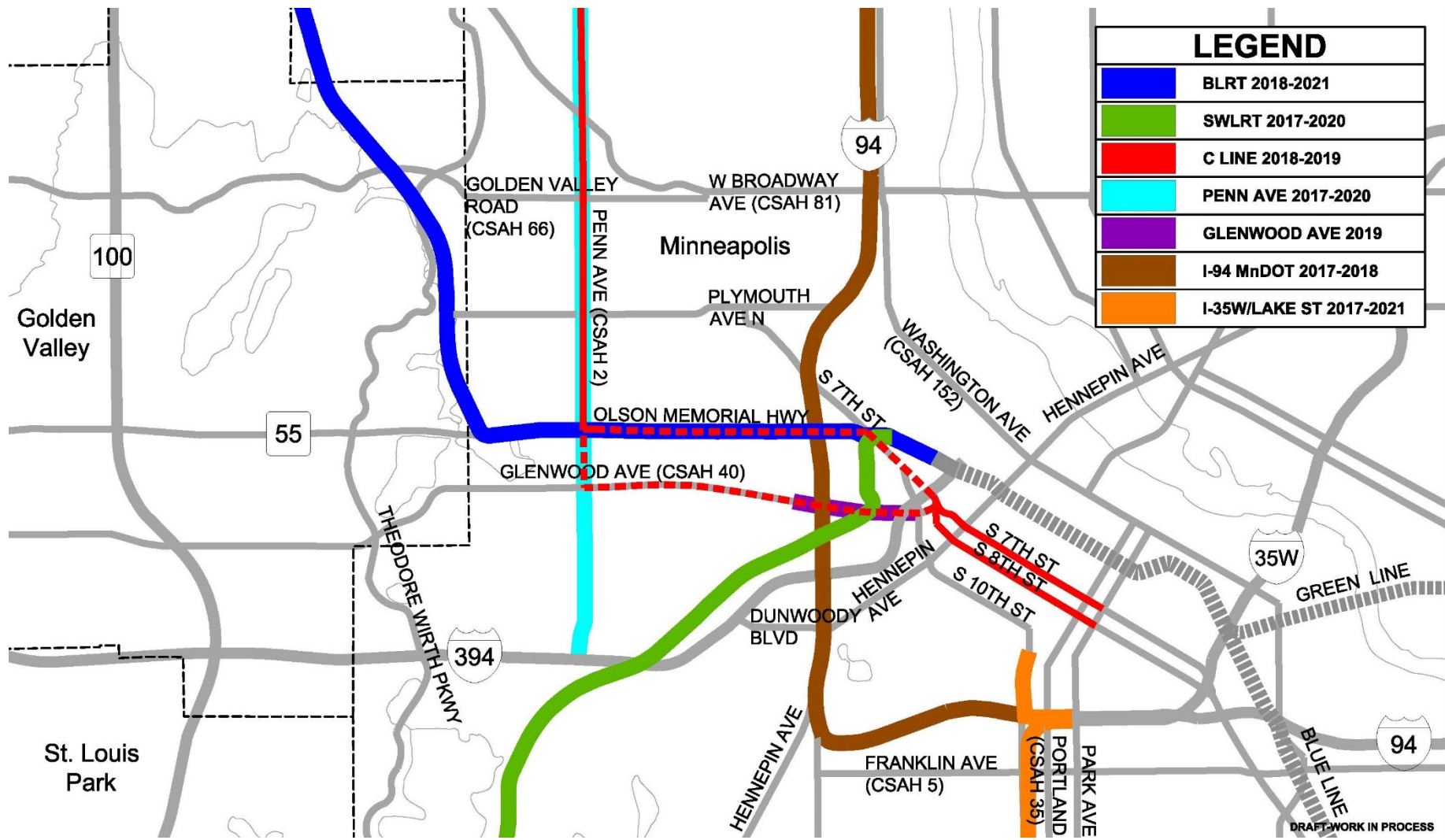
- General support for design progression
- Signage for all users
- Design details important: pavements designed for wheelchair users, adequate width on stairs, signage
- Continue to stress importance of landscape placement and snow clearing to guide users to station
- Important to safely delineate bicycle trail users from pedestrians



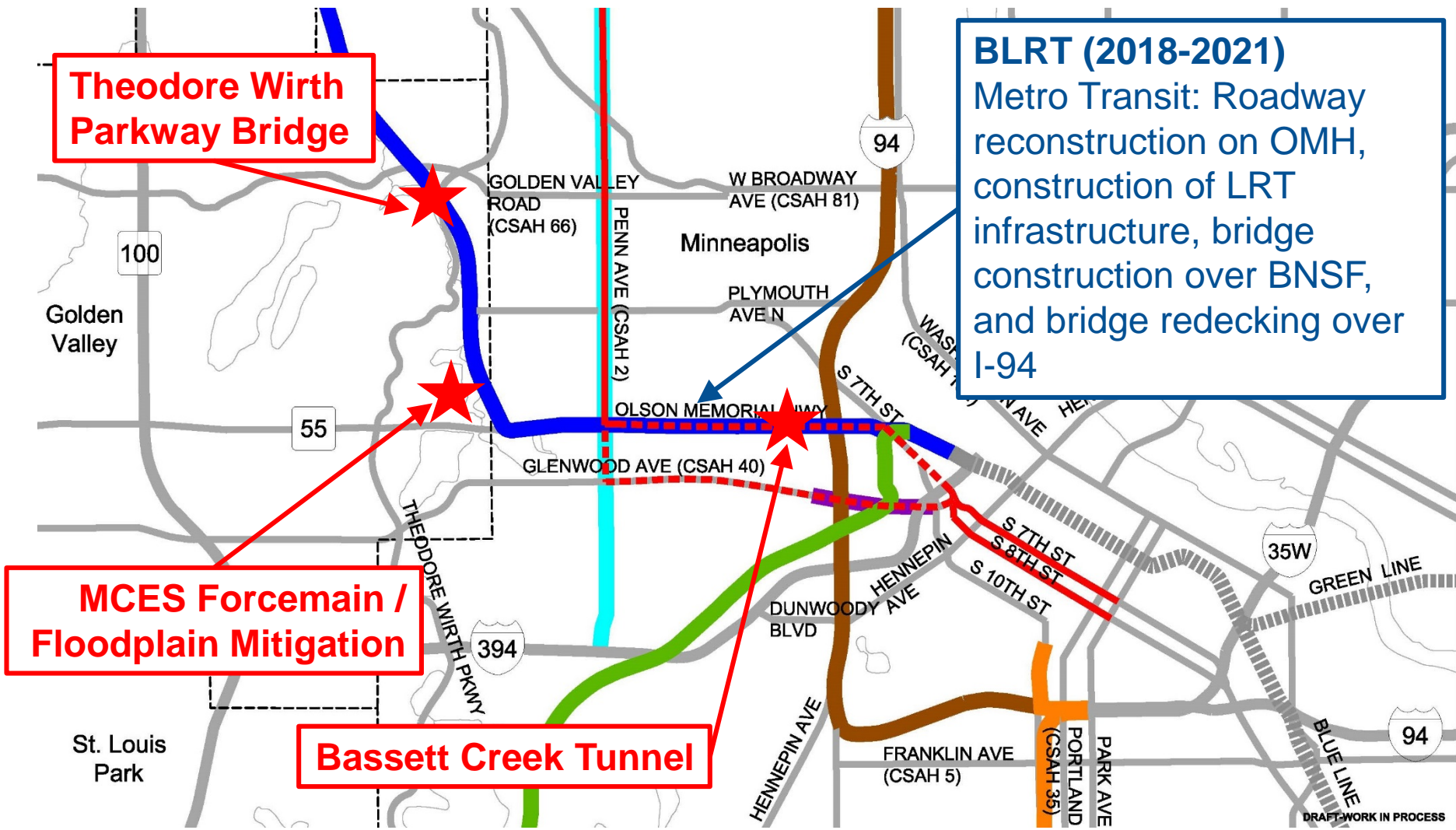
Construction Coordination



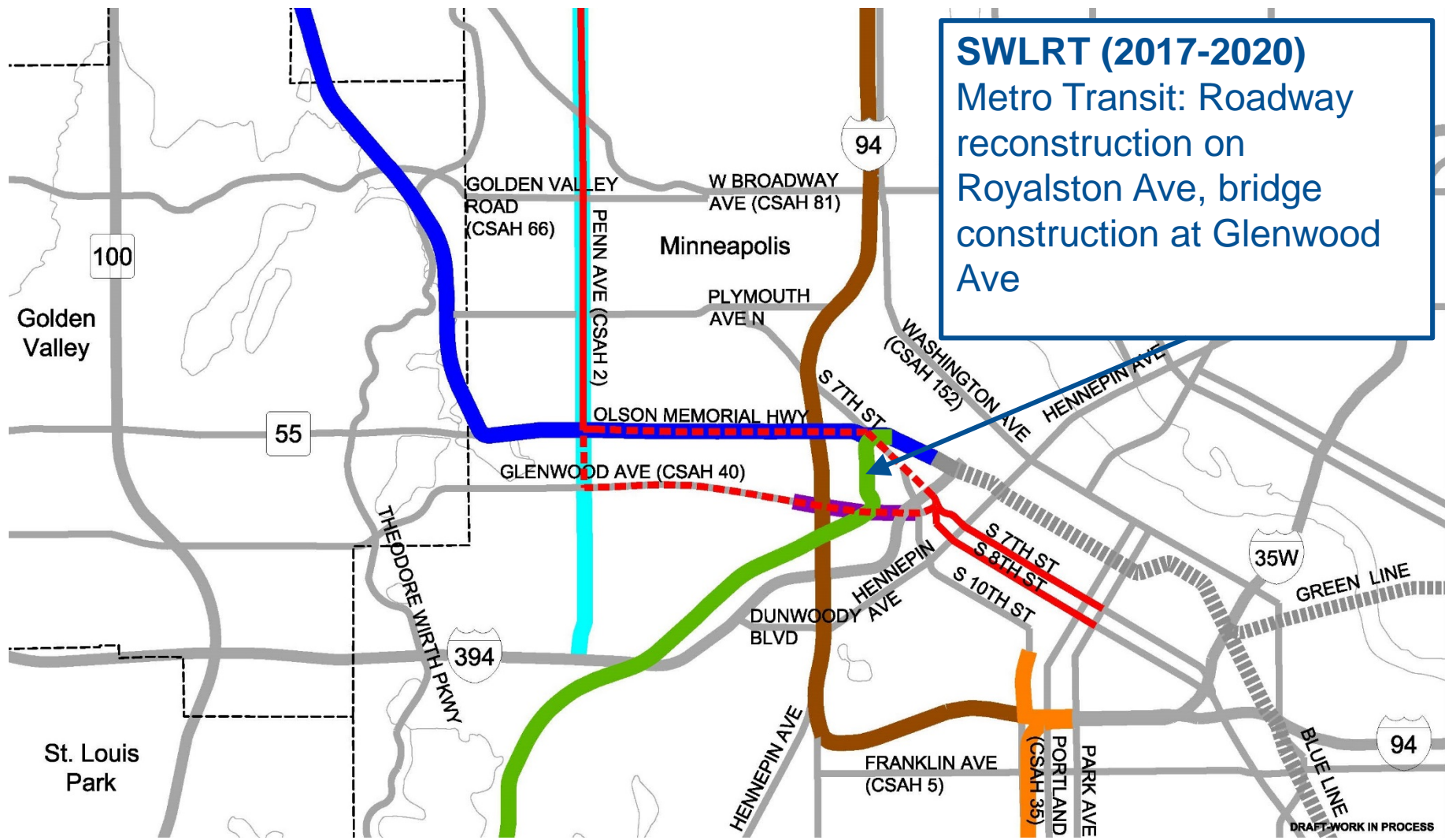
Construction Coordination



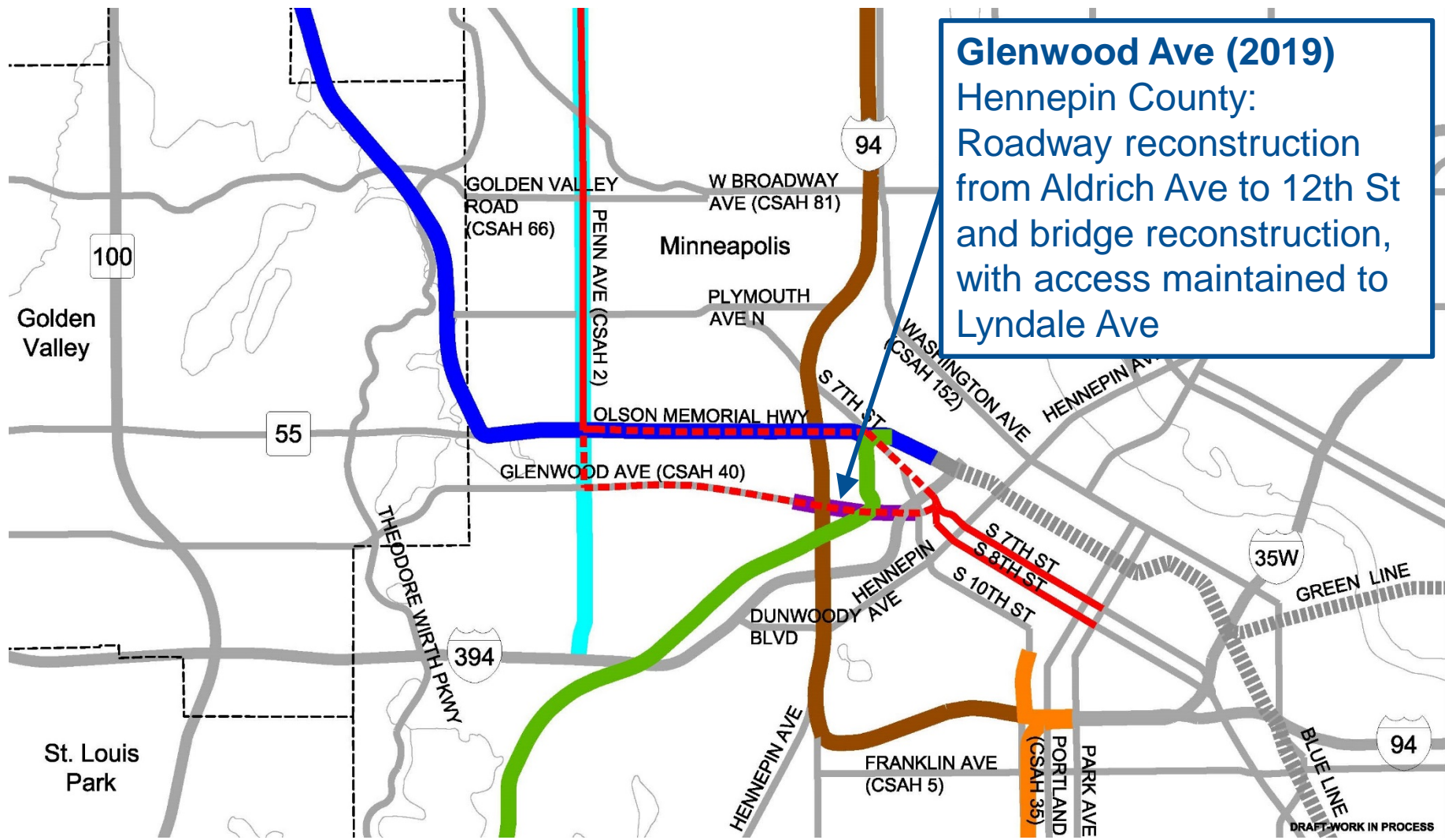
Construction Coordination



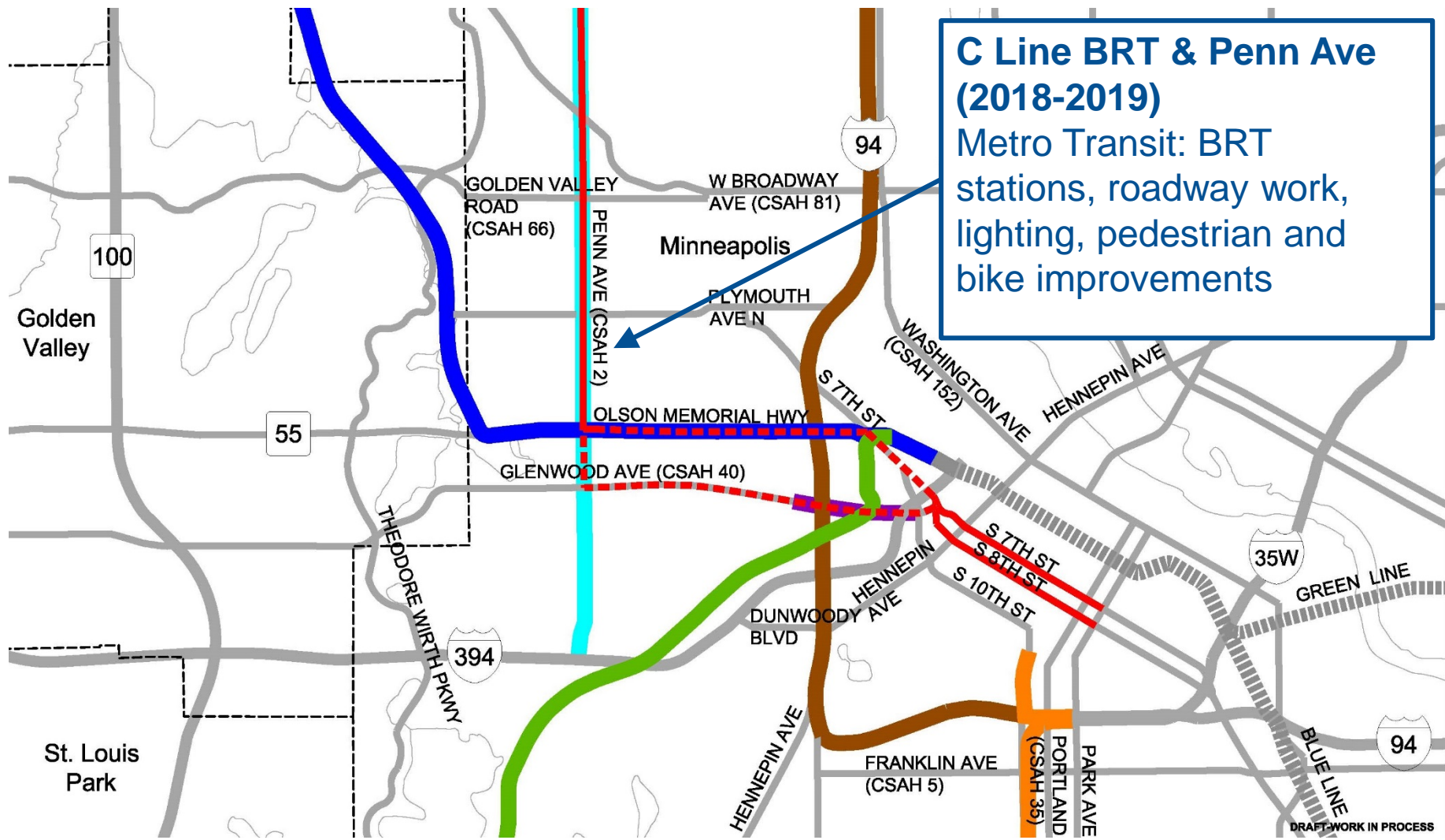
Construction Coordination



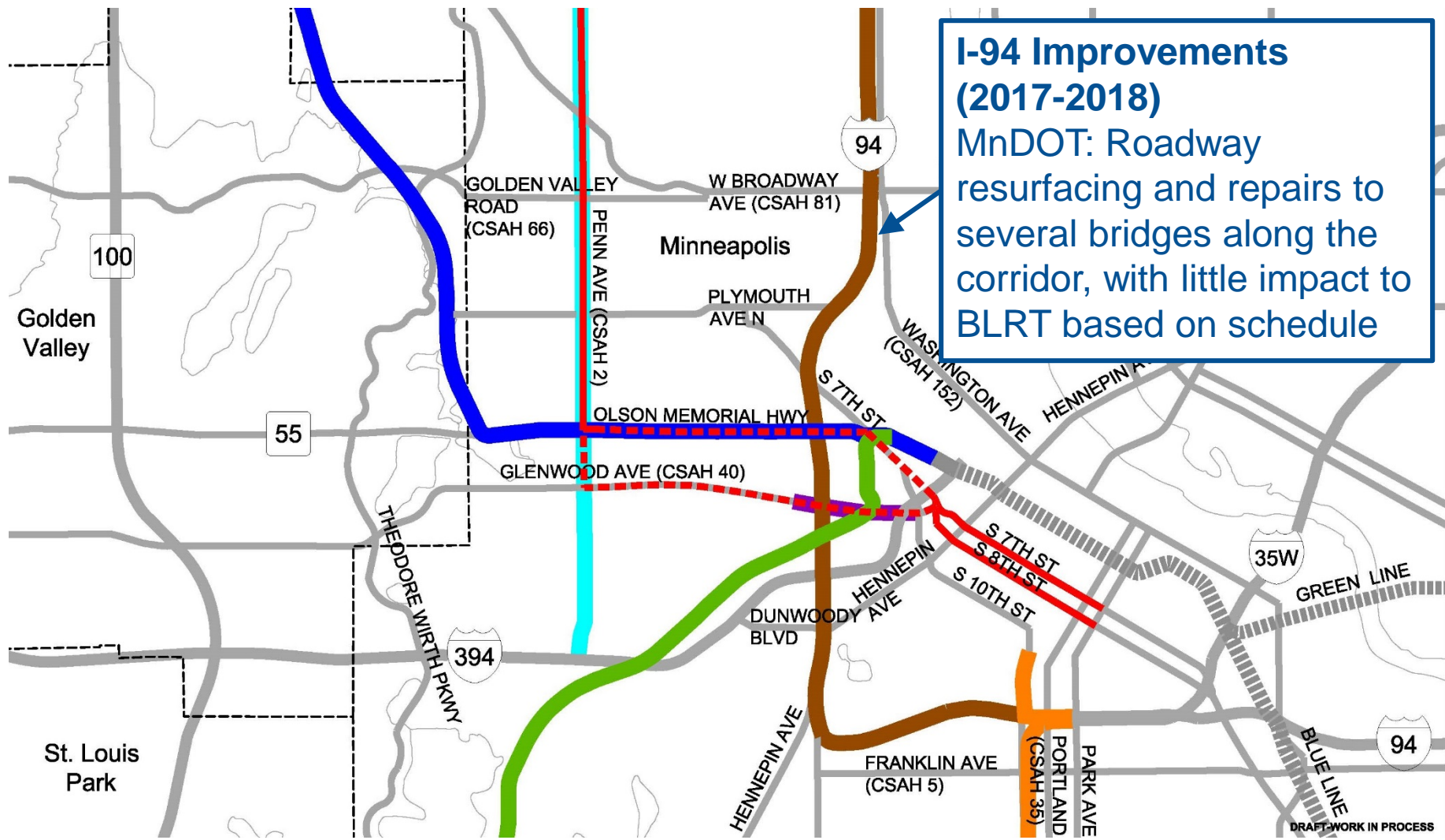
Construction Coordination



Construction Coordination



Construction Coordination



Agency Coordination

- Early agency coordination meetings
 - 11/04/16
 - 12/05/16
 - 01/11/17
- Ongoing construction staging meetings
 - Engineering through construction
- Develop Interagency Construction Communications Plan



Olson Memorial Highway Update



Olson Memorial Highway Update: Stations

- Designs shared November 2016 with advisory committee and community
- Comments included:
 - Make station design more unique
 - Color palettes could use warmth or a pop
 - Sister architecture of the two stations helps tie the corridor together
- Station design advancing, incorporating comments, reviewing material/color options
- Next steps: share advanced designs with community





Penn Avenue Station Context & Character Words





View from Olson Memorial Highway looking West





DRAFT – WORK IN PROGRESS

View from platform entry looking East





URBAN DOWNTOWN GATEWAY

RESIDENTIAL USES

HISTORIC LIBRARY
COMMERCIAL GROCERY STORE

TRAFFIC
BIKES
GREEN
DIVERSITY

ALIVE
HISTORIC AREA

SIMILAR TO PENN
DESTINATION
DENSITY

MOVEMENT IN REGION
TRANSITION CONNECTION

UNIQUE
PLANNED COMMUNITY

SAFETY

VISIBLE INSTITUTIONS

ACTIVE

FOOT TRAFFIC

BOLD AND BRIGHT
EXPANSIVE
OPEN AND VISIBLE
COMMUNITY
CONNECTION TO DOWNTOWN
DESTINATION

CONTEXT & CHARACTER WORKSHOPS

URBAN DOWNTOWN GATEWAY

RESIDENTIAL USES

HISTORIC LIBRARY
COMMERCIAL GROCERY STORE

TRAFFIC
BIKES
GREEN
DIVERSITY

ALIVE
HISTORIC AREA

SIMILAR TO PENN
DESTINATION
DENSITY

MOVEMENT IN REGION
TRANSITION CONNECTION

UNIQUE
PLANNED COMMUNITY

SAFETY

VISIBLE INSTITUTIONS

ACTIVE

FOOT TRAFFIC

BOLD AND BRIGHT
EXPANSIVE
OPEN AND VISIBLE
COMMUNITY
CONNECTION TO DOWNTOWN
DESTINATION

STATION DESIGN CONCEPTS

Van White Blvd Station Context & Character Words





DRAFT – WORK IN PROGRESS

View from Olson Memorial Highway looking Northeast





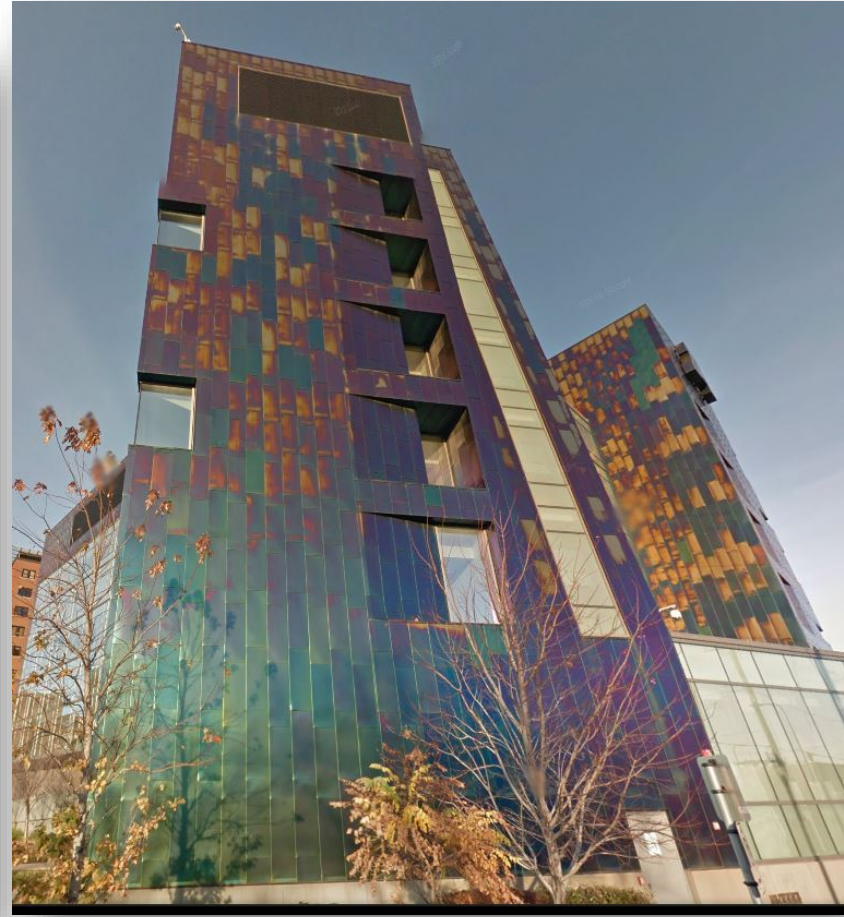
DRAFT – WORK IN PROGRESS

View from platform entry looking West



Olson Memorial Highway Update: Stations

- Precedent imagery: Amundson Hall, U of M
- U of M Children's Hospital



Olson Memorial Highway Update: Stations



Penn Avenue Station Looking East

Olson Memorial Highway Update: Stations



Penn Avenue Station Looking West

Olson Memorial Highway Update: Stations

- Precedent imagery: Walker Library on Hennepin Ave



Olson Memorial Highway Update: Stations



Penn Avenue Station Looking East

Olson Memorial Highway Update: Stations



Van White
Station
Looking East



Olson Memorial Highway Update: Trees

- Over 240 boulevard trees impacted on Olson Memorial Highway due to reconstruction
- Working with Minneapolis Park and Recreation Board on planting plan to:
 - Plant boulevard with street trees to frame the street and provide urban canopy
 - Use assortment of tree species for better tree health and variation
- Over 120 median trees also impacted
- Working with MPRB for relocation of over 50 existing median trees to nearby parks in North Minneapolis



Olson Memorial Highway Update: Trees

At Van White Station Looking West



Floyd B. Olson Memorial Statue (HE-MPC-9013)

- Historic property
- Eligible under NRHP Criterion C, as the work of a master sculptor: Carlo Brioschi
- Project has indirect adverse effect on property
- Statue originally in median of TH 55



Floyd B. Olson Memorial Statue
Trunk Highway 55 at Penn Avenue North
Minneapolis



Floyd B. Olson Memorial Statue (HE-MPC-9013)

- Treatment Plan
 - Mitigation commitment to research siting of statue
 - Explore potential locations for relocating statue
 - Consultation with Section 106 consulting parties
 - Site design/landscaping



Floyd B. Olson Memorial Statue, 1951 (MHS)

Upcoming Open Houses




Corridor Open Houses


- Schedule: March 20 – April 13
- Time: 4:30 – 7:00 pm
- Purpose of the community open houses:
 - Share with the public recent design updates in each community
 - Ask staff questions
- Public can submit comments through the website



More Information

[About Us](#) | [News & Events](#) | [Data & Maps](#) | [Publications](#) | [Doing Business](#) | [Council Meetings](#) | [Contact Us](#) | [Employment](#)

 [COMMUNITIES](#) [PARKS](#) [TRANSPORTATION](#) [WASTEWATER & WATER](#) [HOUSING](#) [PLANNING](#)



METRO BLUE LINE EXTENSION

[Route](#)

[Stations](#)

[Environmental](#)

[Timeline](#)

[Project Partners](#)

METRO BLUE LINE EXTENSION

Bottineau Transitway – Minneapolis & Northwestern Communities

The METRO Blue Line Extension (LRT) will operate northwest from downtown Minneapolis through north Minneapolis, Golden Valley, Robbinsdale, Crystal and Brooklyn Park, drawing riders northwest of Brooklyn Park. The proposed alignment is primarily at-grade and will have up to 11 new stations in addition to Target Field Station and about 13 miles of double track. The line will interline with the METRO Blue Line and connect Minneapolis and the region's northwest suburbs with existing LRT on the METRO Green Line, future LRT on the METRO Green Line Extension, bus rapid transit on the METRO Red Line, the Northstar commuter rail line and local and express bus routes.

Latest News

Feds: Met Council can begin designing METRO Blue Line Extension

Route

[Click on the map below for more information](#)

Website: BlueLineExt.org

Email: BlueLineExt@metrotransit.org

Twitter: [@BlueLineExt](https://twitter.com/BlueLineExt)

