

Light Rail Construction Contracting Kick-Off

METRO Green Line Extension (Southwest LRT) Project

OCTOBER 21, 2015

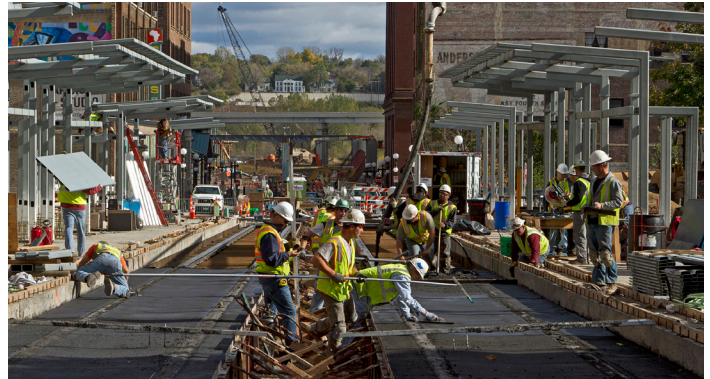
2:00 – 4:30 P.M.

Minnetonka Community Center

14600 Minnetonka Boulevard

Minnetonka, MN 55345

Map: <https://goo.gl/maps/t4c73>



Don't miss the train!

Construction of the planned METRO Green Line Extension (Southwest LRT) project creates many contracting and subcontracting opportunities. The prime contractors for this project will subcontract with hundreds of firms.

Attend this free informational event to learn about contracting opportunities in:

- Construction
- Demolition
- Electrical/Specialty
- Excavation
- HVAC
- Manufacturing
- Plumbing
- And more!

Agenda

The event will begin with a one-hour presentation by Metropolitan Council staff, covering the following topics:

- Overview of the project, project elements, and construction timeline.
- The federal Disadvantaged Business Enterprise (DBE) program, which helps eligible minority-owned and women-owned businesses participate in public infrastructure projects.
- The Metropolitan Council bidding process.

The presentation will be followed by a 90-minute mixer where attendees can meet members of the project design and engineering staff, potential prime contractors, DBE/workforce specialists, trade association representatives and others.

Exhibitor and Attendee Registration

Pre-registration is not required to attend, but individuals and firms are encouraged to register online or contact the staff member listed below. You can also sign up to receive updates on contract procurement.

Online registration and information:

metro council.org/swlrt/contract-kickoff

Individual registration and questions:

Mary Richardson
612-373-3929
mary.richardson@metrotransit.org

Businesses or organizations interested in exhibiting at the Contracting Kick-Off:

Andrew Larson
612-373-3896
andrew.larson@metrotransit.org



Project Overview: METRO Green Line Extension (Southwest LRT)

The Southwest Light Rail Transit (LRT) Project (METRO Green Line Extension) will operate from downtown Minneapolis through the communities of St. Louis Park, Hopkins, Minnetonka and Eden Prairie, passing in close proximity to the city of Edina.

The proposed alignment is primarily at-grade and includes 16 new stations (including Town Center which is deferred for construction at a later date) and approximately 14.5 miles of double track as well as 33 bridges and two tunnels. An Operations and Maintenance Facility (OMF) with facilities for storage and light maintenance of light rail vehicles as well as offices for supervisory staff is also part of the project.

The project has completed approximately 60% of engineering and design work and expects to complete its environmental review process in mid-2016. Pre-construction work and utility relocation will begin in 2016, and heavy construction will be underway from 2017 through 2019. The line is scheduled to begin passenger service in 2020.

The Metropolitan Council (Council) will be the grantee of federal funds. The regional government agency is charged with building the line in partnership with the Minnesota Department of Transportation. Funding is provided by the Federal Transit Administration, Counties Transit Improvement Board (CTIB), the State of Minnesota and the Hennepin County Regional Railroad Authority (HCRRRA).

