

SOUTHWEST

Green Line LRT Extension



Corridor Management Committee

August 14, 2013



Today's Topics

- Ridership Update
- Response to 8/7 CMC Questions
- Locally Requested Betterments / Potential Scope Reductions
- Schedule Update
- Adjourn



Ridership Update

Ridership Refresh

Description	2030 Ridership
LPA	29,660
LPA Refresh*	34,000 – 36,000

*Ridership drivers:

- 2010 Census data
- 2010 On-board survey
- Regional socio-economic forecasts

Ridership Update – *Preliminary Results*

Within ½ mile radius of the SWLRT Stations	Population	Employment
Base Year		
2000 Census	59,791	209,535
2010 Census	78,199	218,090
Horizon Year (2030)		
Former Comp Plans	75,132	272,405
Current Comp Plans	106,182	262,275

Response to 8/7 CMC Questions

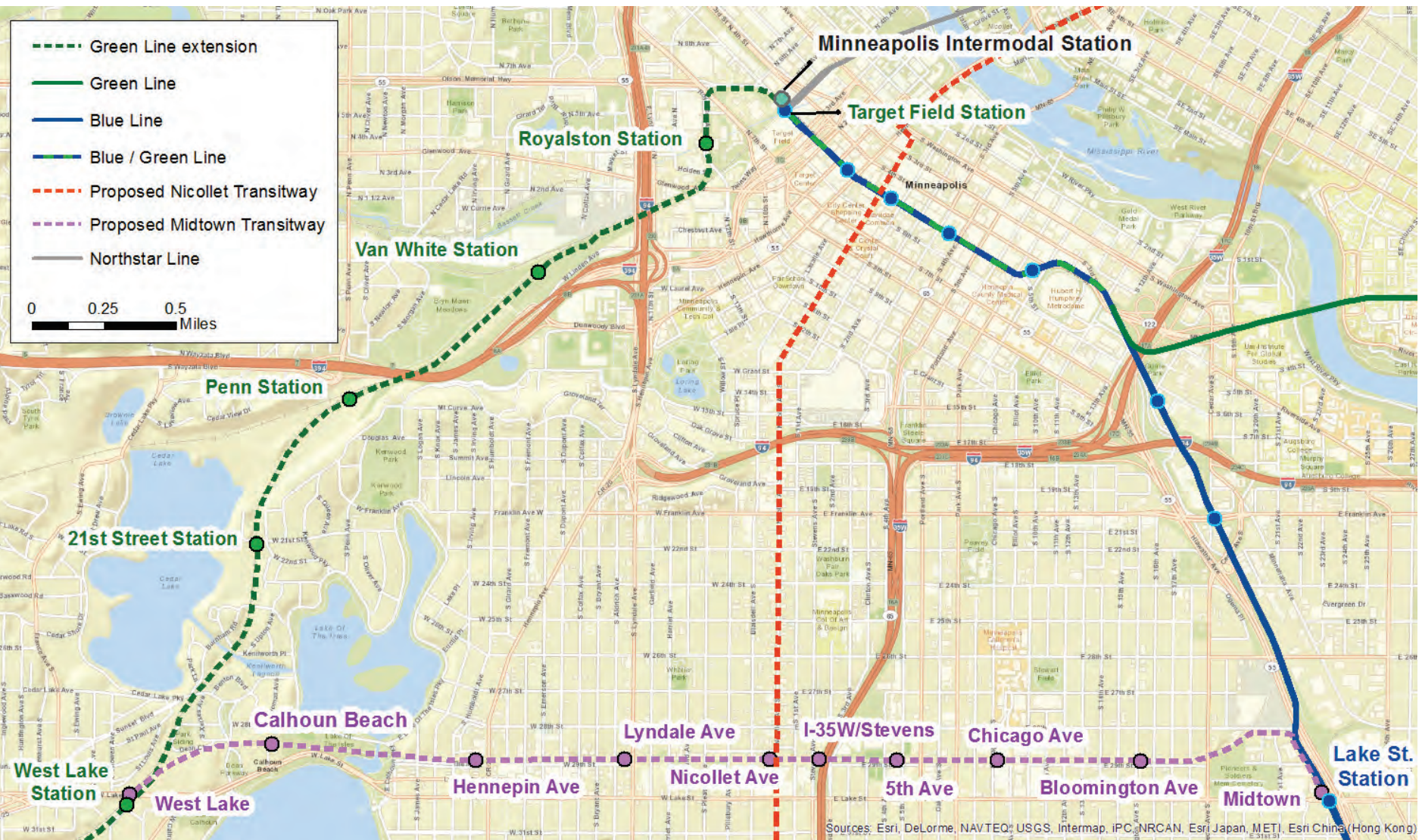
CMC Questions

- What is the ridership at 21st Street Station and where do those riders go if the 21st Street Station is eliminated?
- What are the locally requested betterments / potential scope reductions for the project?
- Can we get copies of the SouthWest Transit resolutions?

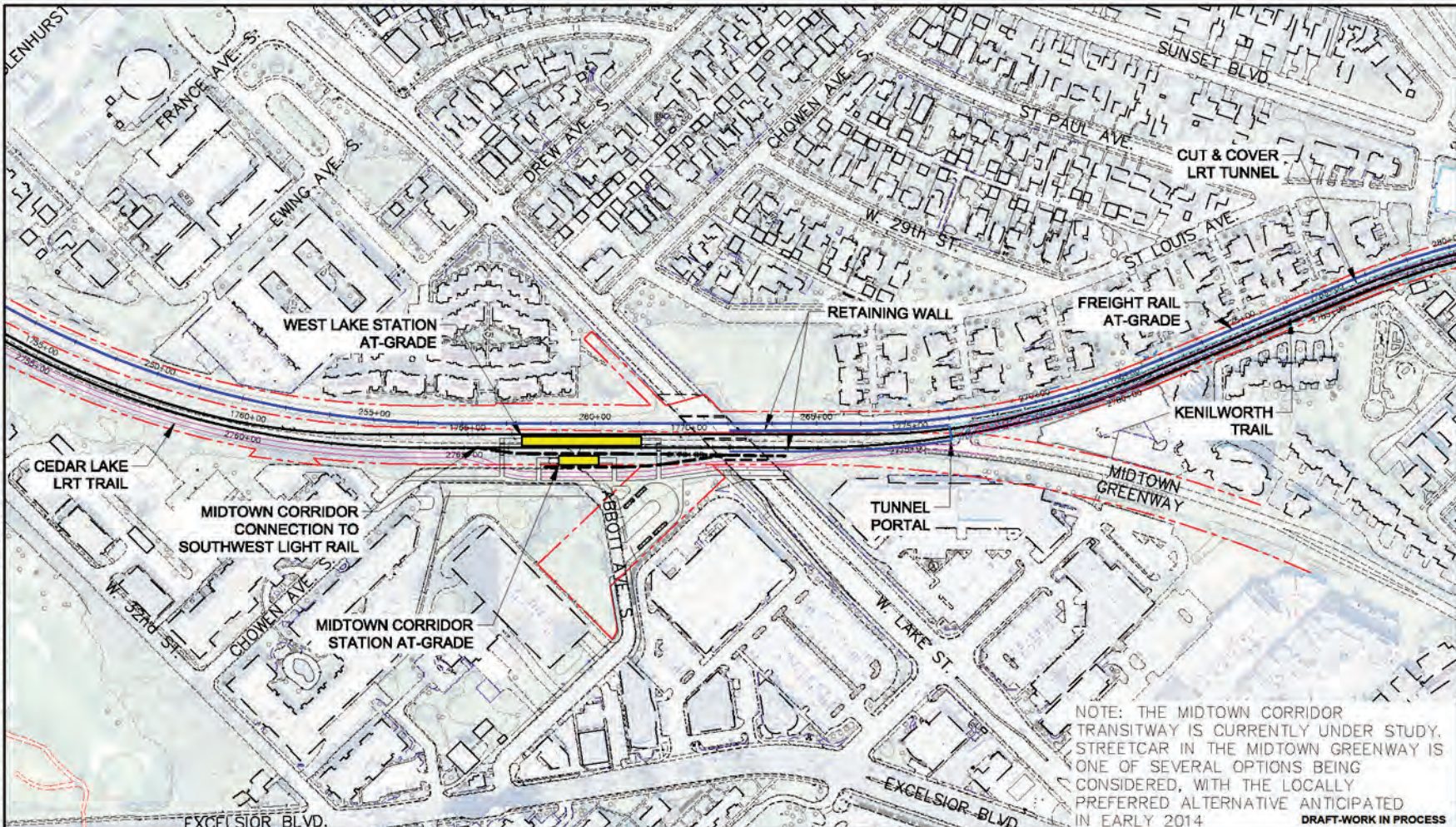
CMC Questions

- What are the responses to Minneapolis Mayor Rybak's letter?
 - Connection to future Midtown rail
 - The 1000 foot gap between the two shallow tunnels
 - Bicycle trail
 - Impacts to the lakes and parkland
 - A guarantee that what is planned will be built

Proposed Connections to Midtown Transitway



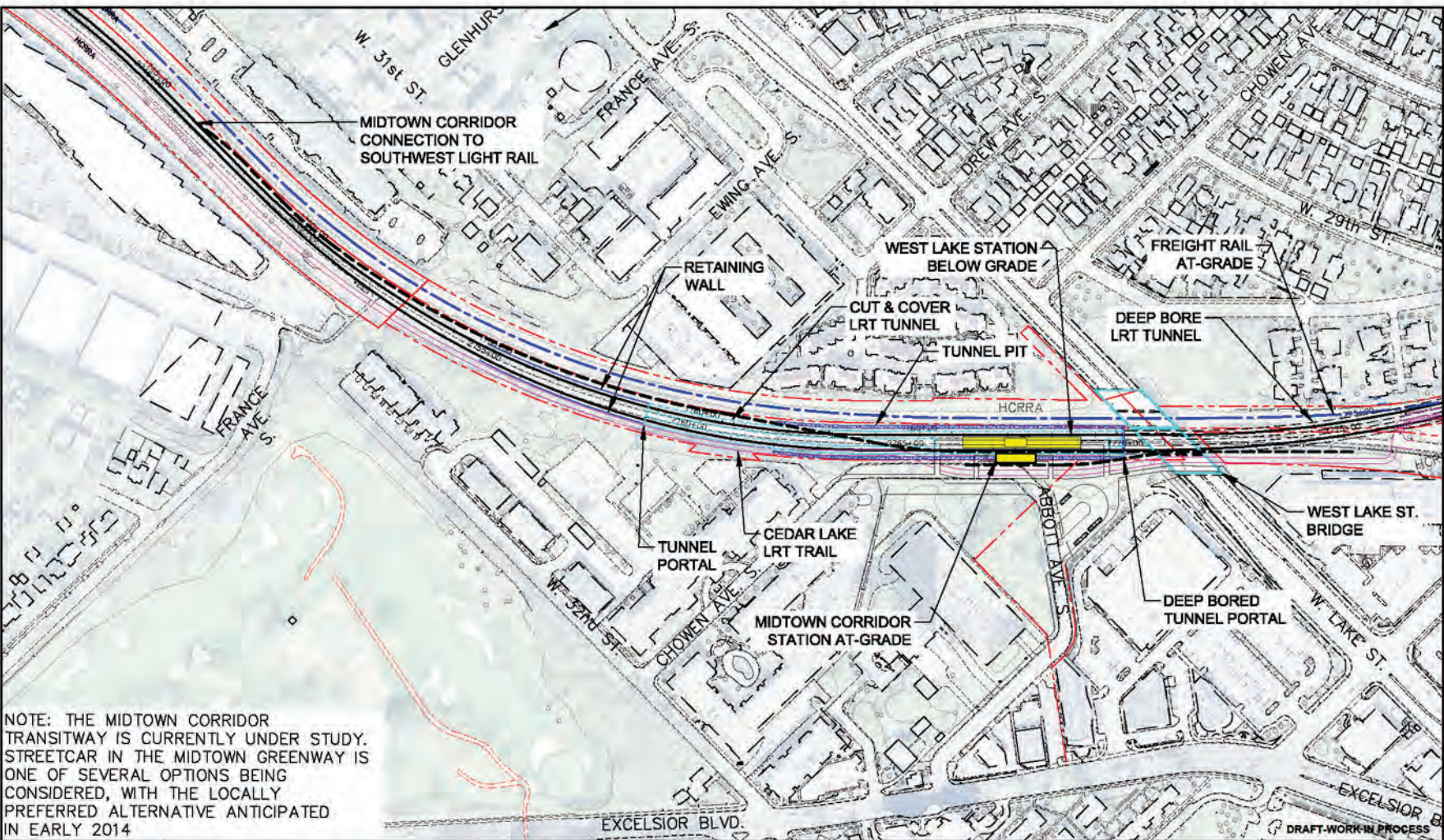
Proposed Connections to Midtown Transitway



Apr. 13, 2013 01:42 pm V:\13000_PRC-CLC\GIS\DWG\IT ENL\AVR\130415\VALVES-COL-D with MIDTOWN Cor. 1.mxd





	<p>SOUTHWEST LIGHT RAIL KENILWORTH SHALLOW LRT TUNNEL WITH MIDTOWN CORRIDOR</p>	<p>IRT # 17 Rev 0 8/12/2013</p>	 <p>0 50 100 200 SCALE</p>		
--	--	---	---	---	---

Proposed Connections to Midtown Transitway



NOTE: THE MIDTOWN CORRIDOR TRANSITWAY IS CURRENTLY UNDER STUDY. STREETCAR IN THE MIDTOWN GREENWAY IS ONE OF SEVERAL OPTIONS BEING CONSIDERED, WITH THE LOCALLY PREFERRED ALTERNATIVE ANTICIPATED IN EARLY 2014

Aug. 13 2013 01:30 pm W:\3300_AEC-E\GAD\SECRET_EX\LA\OUTSIDE\VAL3-COOL_TBW with MIDTOWN.dwg By: hlvch

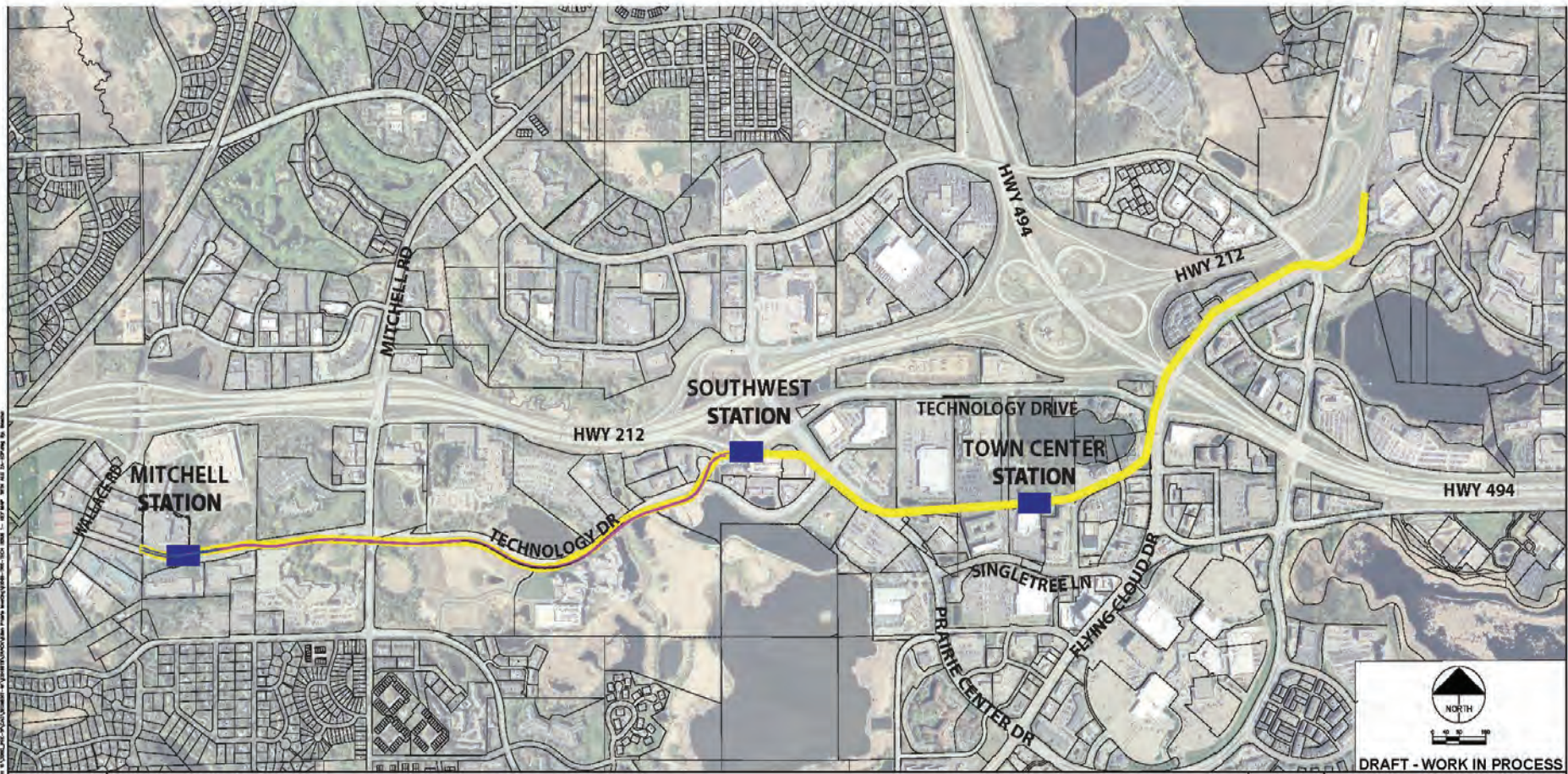
 <p>SOUTHWEST Green Line LRT Extension</p>	<p align="center">SOUTHWEST LIGHT RAIL KENILWORTH DEEP BORE LRT TUNNEL WITH MIDTOWN CORRIDOR</p>	<p>IRT # 17 Rev 0 8/12/2013</p>	 <p>0 50 100 200 SCALE</p>	 <p>METROPOLITAN COUNCIL</p>	 <p>Kimley-Horn and Associates, Inc.</p>
---	---	---	---	--	--

Locally Requested Betterments / Potential Scope Reductions

Locally Requested Betterments

Item No.	Technical Issue No.	Requestor	Location	Description	Cost Drivers	Total (\$M YOE)
1	1	Eden Prairie	Eden Prairie Town Center Station	-Extend Main Street north to Technology Drive	Relocated high voltage power line transmission tower; New Traffic Signal at Technology Drive; No ROW required	\$2.5 - \$3
Total Technical Issue No. 1						\$2.5 - \$3

TI #1 Eden Prairie Alignment: Mitchell Station & Comp Plan Station via Technology Drive



	<p>SOUTHWEST LRT TI-1: EDEN PRAIRIE - ALIGNMENT TIER 2 ANALYSIS</p>	<p> OPTION 3 MITCHELL: (TECH DR / COMP PLAN)</p>	<p>IRT: #1 DATE: 8/17/2013</p>	<p> DRAFT - WORK IN PROCESS </p>
--	--	---	---	--

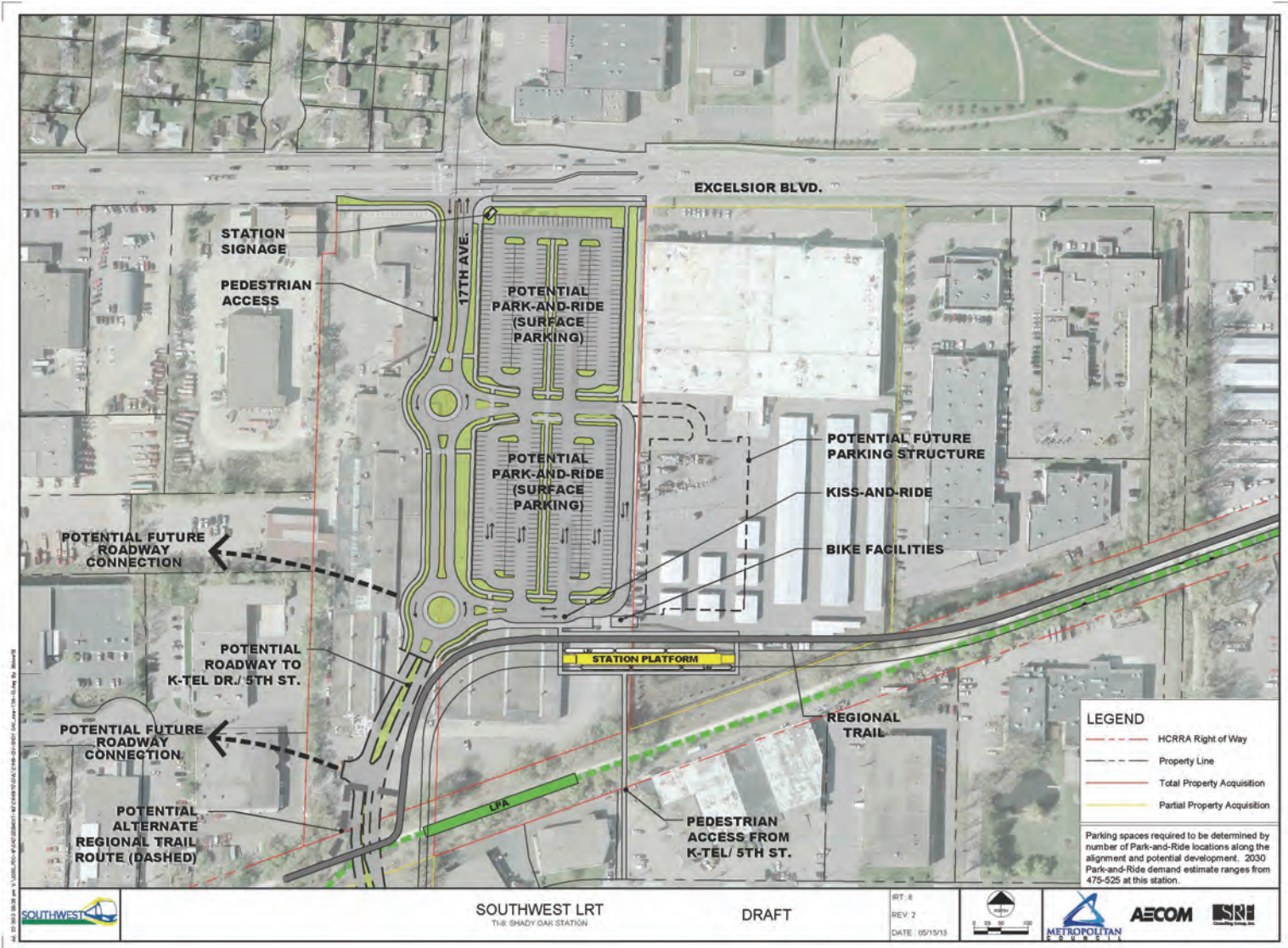
Locally Requested Betterments

Item No.	Technical Issue No.	Requestor	Location	Description	Cost Drivers	Total (\$M YOE)
2	7	Minnetonka/Hopkins	Minnetonka/Hopkins Bridge	-Add pedestrian/bike trail alongside or under Minnetonka/Hopkins bridge, connecting Smetana Road to north of CP	TBD	TBD
Total Technical Issue No. 7						TBD

Locally Requested Betterments

Item No.	Technical Issue No.	Requestor	Location	Description	Cost Drivers	Total (\$M YOE)
3	8	Minnetonka/Hopkins	Shady Oak Station	-17th Street Extension from Park-and-Ride to K-Tel Drive	ROW	\$9 - \$10
4	8	Hopkins	Shady Oak Station	-Change from 500 surface spaces to 250 surface/250 structured	Parking structure; No additional ROW required	\$3 - \$3.5
Total Technical Issue No. 8						\$12-\$13.5

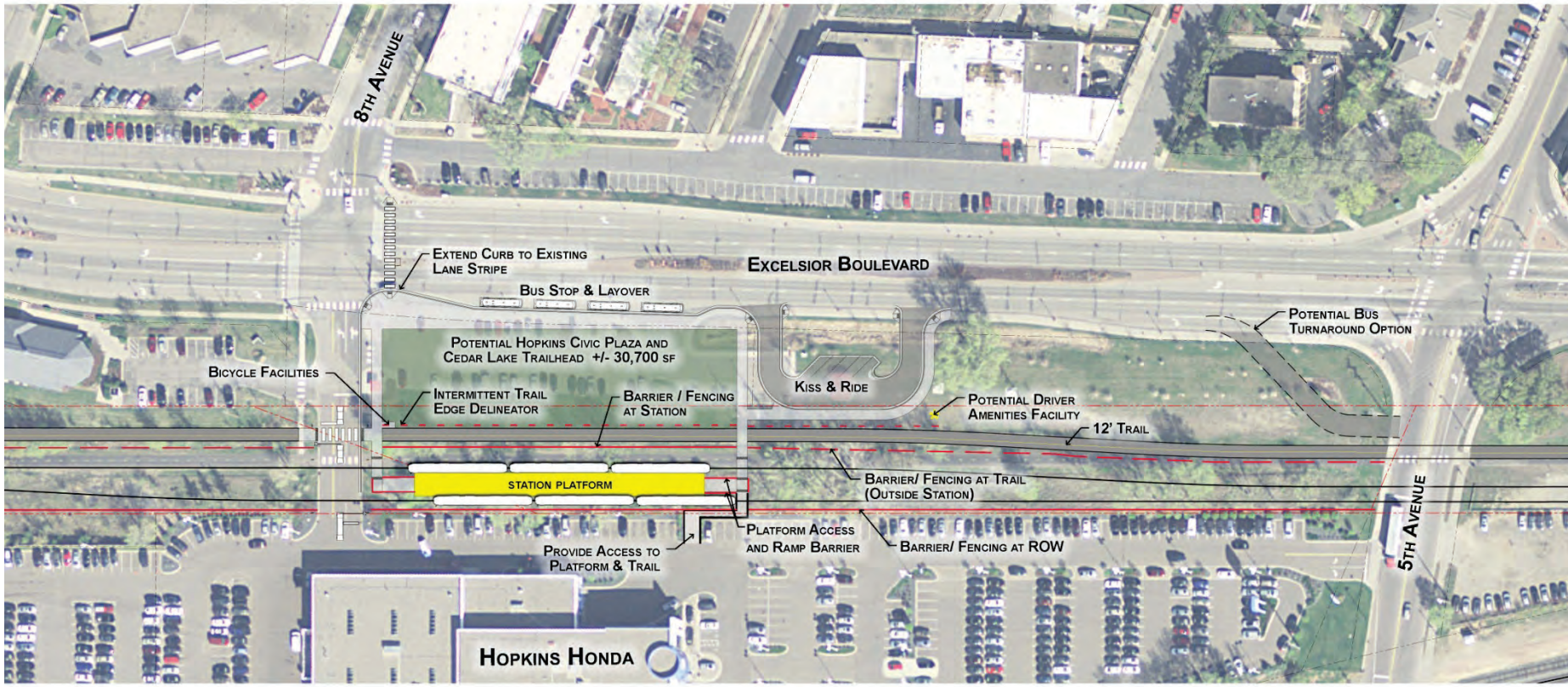
TI #8: Shady Oak Station



Locally Requested Betterments

Item No.	Technical Issue No.	Requestor	Location	Description	Cost Drivers	Total (\$M YOE)
5	10	Hopkins	DT Hopkins Station	-Civic plaza at station - includes lighting, landscaping, architectural features and amenities, enhanced bus shelters on Excelsior; bike facility with bathrooms and showers, water fountains, and bike maintenance space; landscaping east of kiss-and-ride extending to 5th Avenue	Public stage and event space; public art; lighting; pavements; bus shelters with enhanced finishes; landscape and irrigation; bike facility building structure; utility services	\$4.5 - \$5
6	10	Hopkins	DT Hopkins Station	-Additional pedestrian enhancements at 8th Avenue and Excelsior Blvd. intersection	Cross walk and corner pavement treatments	\$0.5 - \$1
7	10	Hopkins	DT Hopkins Station	-Pedestrian crossing improvements at the 5th Avenue and Excelsior Blvd. intersection	Removal of pork chops; curb line adjustments; intersection reconstruction; new signal	\$2 - \$2.5
Total Technical Issue No. 10						\$7 - \$8.5

TI #10: Downtown Hopkins Station



DRAFT-WORK IN PROCESS

	<p>SOUTHWEST LIGHT RAIL HOPKINS - DOWNTOWN HOPKINS STATION</p>	<p>IRT #10 Rev 1 04/24/2013</p>			
--	---	---	--	--	--

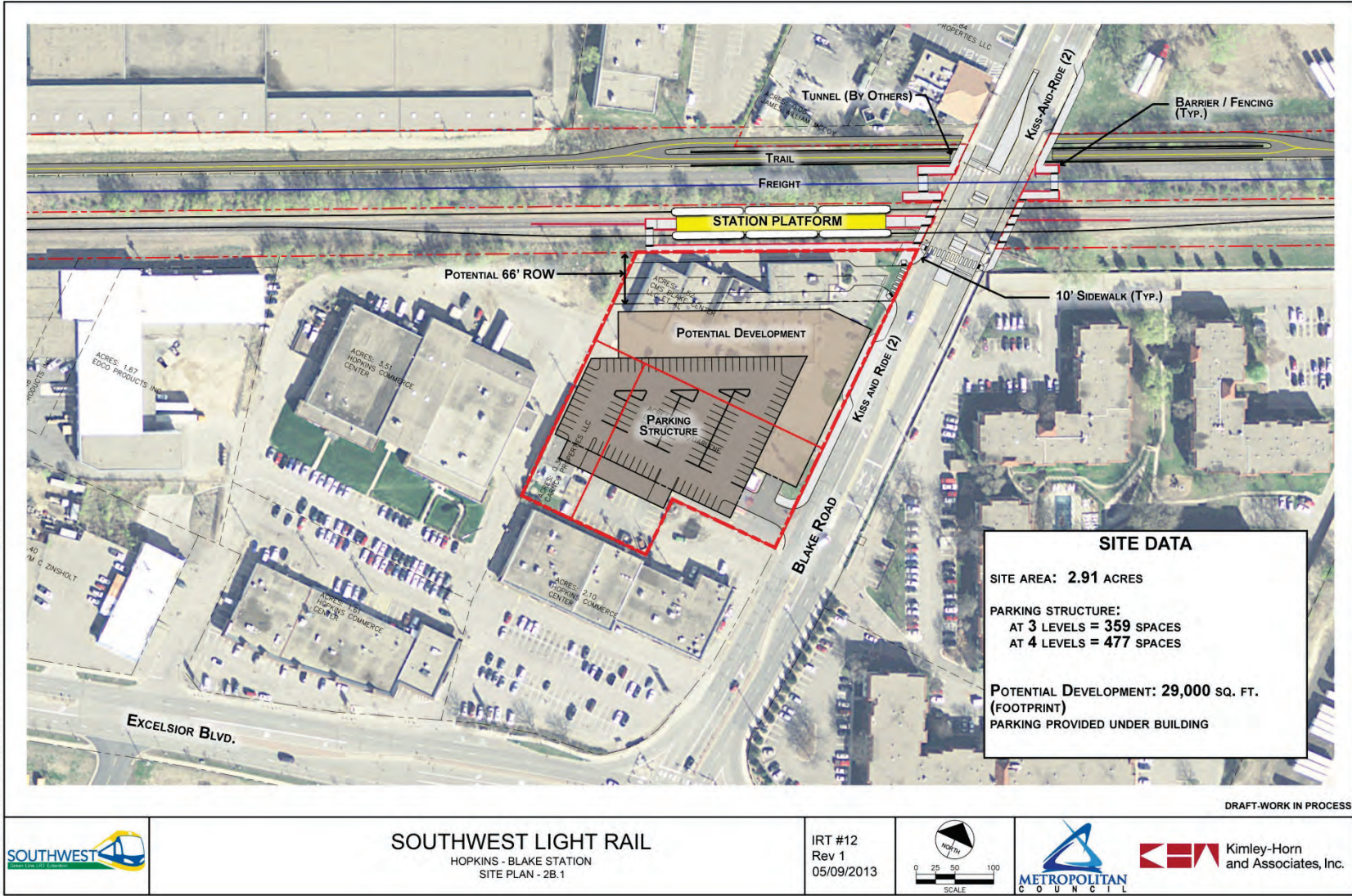
Locally Requested Betterments

Item No.	Technical Issue No.	Requestor	Location	Description	Cost Drivers	Total (\$M YOY)
8	11	Hopkins/Three Rivers Park District	Excelsior Crossing	Regional Trail bridge over Excelsior Boulevard	Separate trail bridge structure and retaining walls (not connected to LRT bridge over Excelsior and freight)	\$5.5 - \$6.5
Total Technical Issue No. 11						\$5.5-\$6.5

Locally Requested Betterments

Item No.	Technical Issue No.	Requestor	Location	Description	Cost Drivers	Total (\$M YOE)
9	12	Hopkins	Blake Station	-Potential joint development opportunity on northwest corner of Blake and Excelsior with site and access improvements	ROW; access improvements	\$13.5 - \$14.5
10	12	Hopkins/Three Rivers Park District	Blake Station	-Trail underpass at Blake Rd	Tunnel Box and retaining walls	\$3 - \$3.5
Total Technical Issue No. 12						\$16.5 - \$18

TI #12: Blake Station

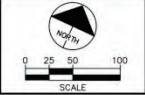


DRAFT-WORK IN PROCESS



SOUTHWEST LIGHT RAIL
 HOPKINS - BLAKE STATION
 SITE PLAN - 2B.1

IRT #12
 Rev 1
 05/09/2013



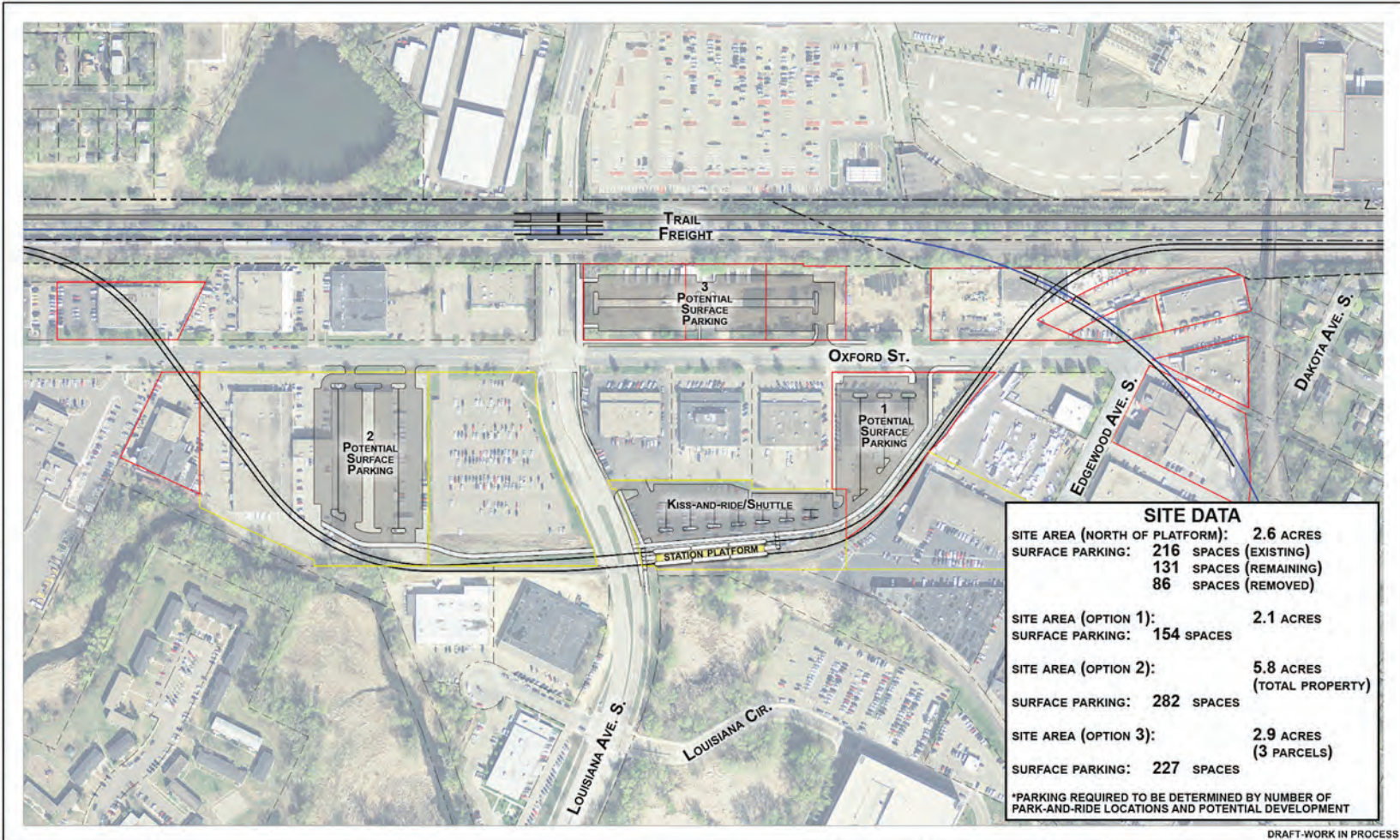
Kimley-Horn and Associates, Inc.



Locally Requested Betterments

Item No.	Technical Issue No.	Requestor	Location	Description	Cost Drivers	Total (\$M YOY)
11	13	St. Louis Park	Louisiana Station	-Platform location adjacent to Methodist Hospital; Remove entire switching wye; park-and-ride east of Louisiana and south of freight rail corridor on Oxford properties	ROW; additional LRT guideway length	\$18 - \$23
Total Technical Issue No. 13						\$18 - \$23

TI #13: Louisiana Station



SITE DATA	
SITE AREA (NORTH OF PLATFORM):	2.6 ACRES
SURFACE PARKING:	216 SPACES (EXISTING)
	131 SPACES (REMAINING)
	86 SPACES (REMOVED)
SITE AREA (OPTION 1):	2.1 ACRES
SURFACE PARKING:	154 SPACES
SITE AREA (OPTION 2):	5.8 ACRES (TOTAL PROPERTY)
SURFACE PARKING:	282 SPACES
SITE AREA (OPTION 3):	2.9 ACRES (3 PARCELS)
SURFACE PARKING:	227 SPACES
*PARKING REQUIRED TO BE DETERMINED BY NUMBER OF PARK-AND-RIDE LOCATIONS AND POTENTIAL DEVELOPMENT	

DRAFT-WORK IN PROCESS



SOUTHWEST LIGHT RAIL
ST. LOUIS PARK
LOUISIANA STATION 2A CO-LOCATION

IRT #13
Rev 1
05/26/2013

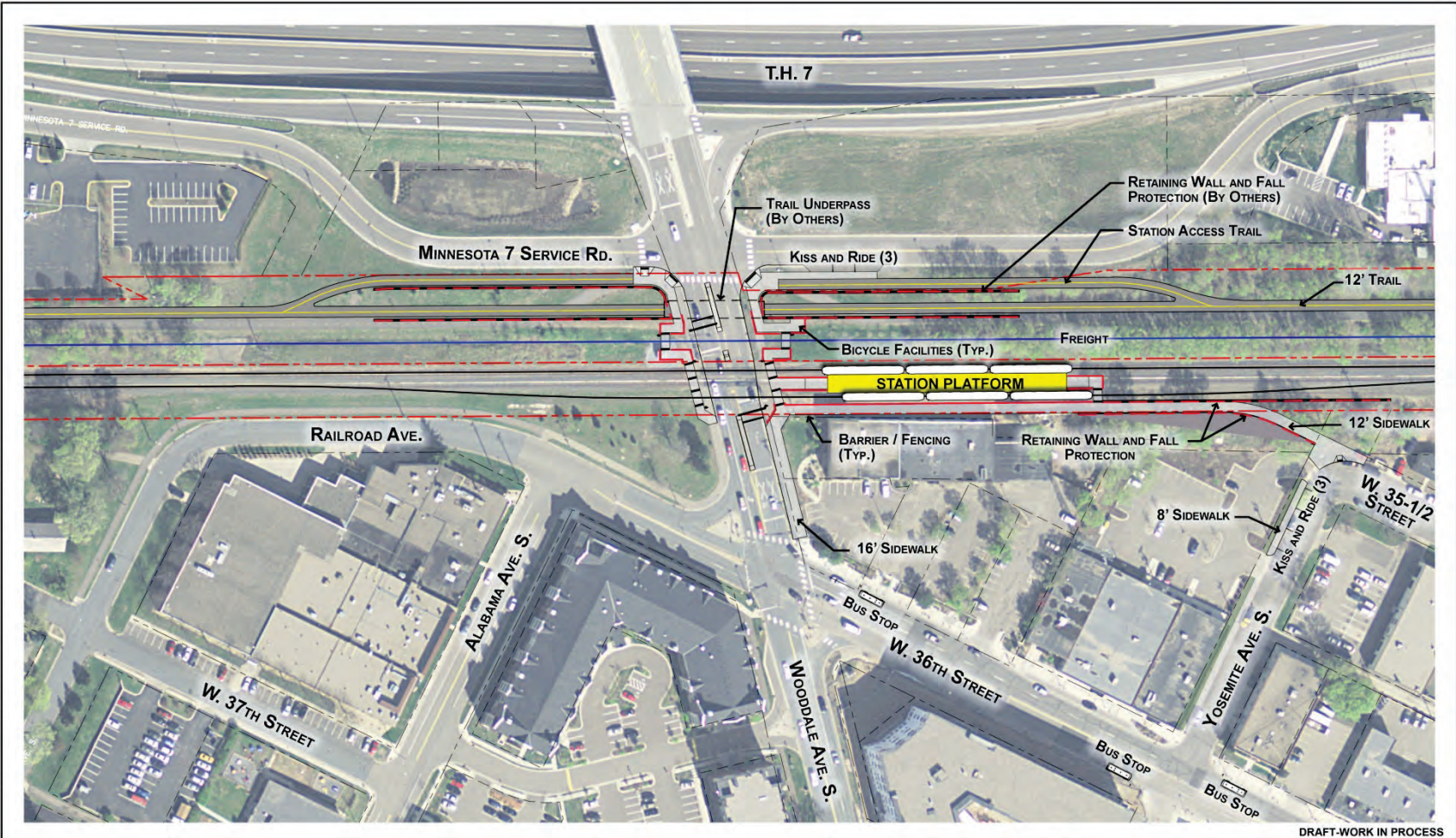


Kimley-Horn and Associates, Inc.

Locally Requested Betterments

Item No.	Technical Issue No.	Requestor	Location	Description	Cost Drivers	Total (\$M YOY)
12	14	St. Louis Park/Three Rivers Park District	Wooddale Station	Trail underpass at Wooddale	Tunnel Box and retaining walls	\$3 - \$3.5
Total Technical Issue No. 14						\$3 - \$3.5

TI #14: Wooddale Station

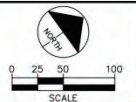


DRAFT-WORK IN PROCESS



SOUTHWEST LIGHT RAIL
 WOODDALE STATION CO-LOCATION
 APRIL 19, 2013

IRT #14
 Rev 1
 04/19/2013



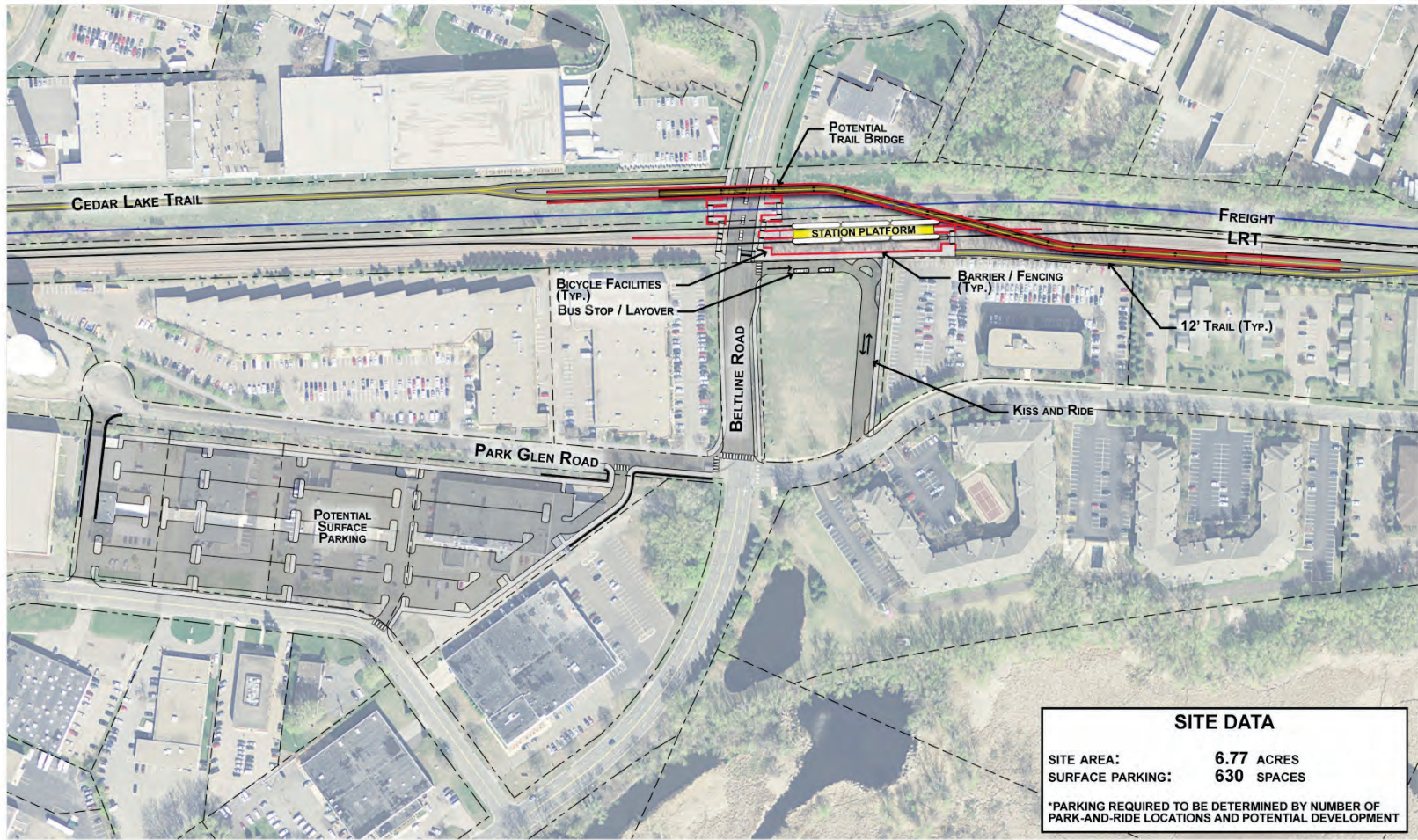
Kimley-Horn and Associates, Inc.



Locally Requested Betterments

Item No.	Technical Issue No.	Requestor	Location	Description	Cost Drivers	Total (\$M YOY)
13	16	St. Louis Park	Beltline Station	-Grade separate Beltline roadway under LRT/Freight/Trail	Bridge structures for LRT, freight, and trail over Beltline; retaining walls, permanent dewatering	\$18 - \$23
<i>-OR-</i>						<i>-OR-</i>
14	16	St. Louis Park/Three Rivers Park District	Beltline Station	-Trail overpass at Beltline	Bridge and retaining walls	\$3.5 - \$4

TI #16: Beltline Station



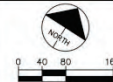
SITE DATA	
SITE AREA:	6.77 ACRES
SURFACE PARKING:	630 SPACES
*PARKING REQUIRED TO BE DETERMINED BY NUMBER OF PARK-AND-RIDE LOCATIONS AND POTENTIAL DEVELOPMENT	


DRAFT-WORK IN PROCESS



SOUTHWEST LIGHT RAIL
ST. LOUIS PARK - BELTLINE STATION 2
CO-LOCATION

IRT #16
Rev 1
06/06/2013



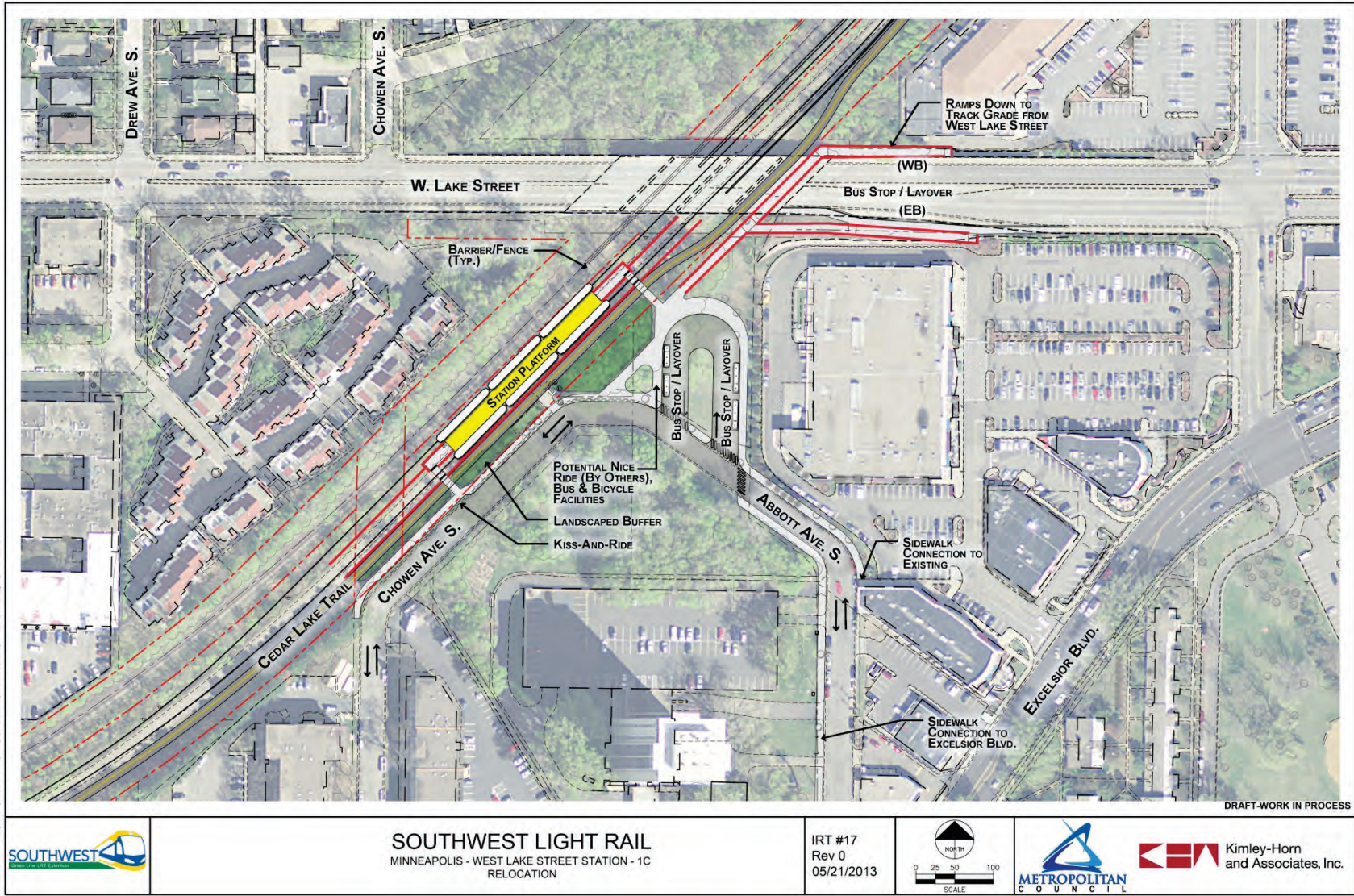
 Kimley-Horn
and Associates, Inc.

JUL 18, 2013 10:50 AM V:\33000\PROJECTS\ST. LOUIS PARK - BELTLINE STATION - CO-LOCATION BY: bsw/ctc

Locally Requested Betterments

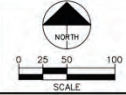
Item No.	Technical Issue No.	Requestor	Location	Description	Cost Drivers	Total (\$M YOE)
15	17	Minneapolis	West Lake Station	-Vertical circulation elevator/stairs north and south of the West Lake Street bridge	Structure and finishes	\$5 - \$6
16	17	Hennepin County	West Lake Station	-Remove bus turnaround and realign Chowen and Abbott on private property	ROW	\$2 - \$2.5
Total Technical Issue No. 17						\$7 - \$8.5

TI #17: West Lake Station



SOUTHWEST LIGHT RAIL
MINNEAPOLIS - WEST LAKE STREET STATION - 1C
RELOCATION

IRT #17
Rev 0
05/21/2013



Kimley-Horn and Associates, Inc.



Potential Scope Reductions

Item No.	Technical Issue No.	Location	Description	Total (\$M YOE)
1	1	Mitchell/Southwest	-Truncate to SW Station; build 675 LRT park-and-ride space parking ramp	(\$70 - \$75)
	- OR -			- OR -
	1	Mitchell/Southwest	-Truncate to SW Station; build 900 LRT park-and-ride space parking ramp	(\$50 - \$55)
	- OR -			- OR -
	1	Mitchell	-Move Mitchell Station to City Hall location; assumes OMF at Hopkins; reduces track length by 1400' ; eliminates crossing of Technology Drive	(\$10 - \$15)

Potential Scope Reductions

Item No.	Technical Issue No.	Location	Description	Total (\$M YOY)
2	13	Louisiana	-Use Oxford properties for Louisiana Station park-and-ride in place of purchasing an easement on the Golden Auto parking lot site	(\$6 - \$7)

Potential Scope Reductions

Item No.	Technical Issue No.	Location	Description	Total (\$M YOY)
3	21	Freight Rail	-Eliminate CP ROW swap (co-location only) -Eliminate southerly connection (co-location only)	(\$60 - \$65)
4	21	Kenilworth Corridor	-Eliminate Northern segment of shallow tunnel (co-location only)	(\$55 - \$60)

Schedule Update

Project Scope and Cost Rollout: Next Steps

- Present / seek input
 - Metropolitan Council – August 14
 - Minneapolis Transportation & Public Works – August 20
 - CTIB Board – August 21
 - SWLRT Corridor Management Committee – August 28
- Present recommended scope and cost / seek input
 - SWLRT Corridor Management Committee – September 4
 - Metropolitan Council - September 11
- Request approval on scope and cost
 - Transportation Committee – September 23
 - Metropolitan Council – September 25

A Look Ahead: Design & Engineering

- Q3 2013: Submit Municipal Consent SWLRT Plans for City and County Review
- Q4 2013: Complete Municipal Consent Approval Process
- Q1 2014: Finalize 30% Design Plans and Specs

More Information

Online:

www.SWLRT.org

Email:

SWLRT@metrotransit.org

Twitter:

www.twitter.com/southwestlrt

