



Southwest LRT Management Committee



December 9, 2010



EDEN PRAIRIE ■ MINNETONKA ■ EDINA ■ HOPKINS ■ ST. LOUIS PARK ■ MINNEAPOLIS

Today's Topics



- Introductions
- Committee Charter/Project Organization
- Project Status Update
- Project Funding
- Standing Meeting Date



Committee Membership



Member	Representing
Chair Peter Bell	Metropolitan Council
Commissioner Dan Erhart	CTIB
Council Member Kathy Nelson	City of Eden Prairie
Mayor James Hovland	City of Edina
Commissioner Jan Callison	Hennepin County
Commissioner Gail Dorfman	Hennepin County
Commissioner Peter McLaughlin	Hennepin County
Council Member Cheryl Youakim	City of Hopkins
Council Member Robert McFarlin	Metropolitan Council
Brian Lamb	Metro Transit
Mayor R. T. Rybak (Peter Wagenius, Alternate)	City of Minneapolis
Mayor Terry Schneider	City of Minnetonka
Mayor Jeff Jacobs	City of St. Louis Park
Keith Bogut	State Dept. Management & Budget
Bill James	SWLRT Community Advisory Committee Rep.
--	SWLRT Business Advisory Committee Rep.
--	MN Department of Transportation



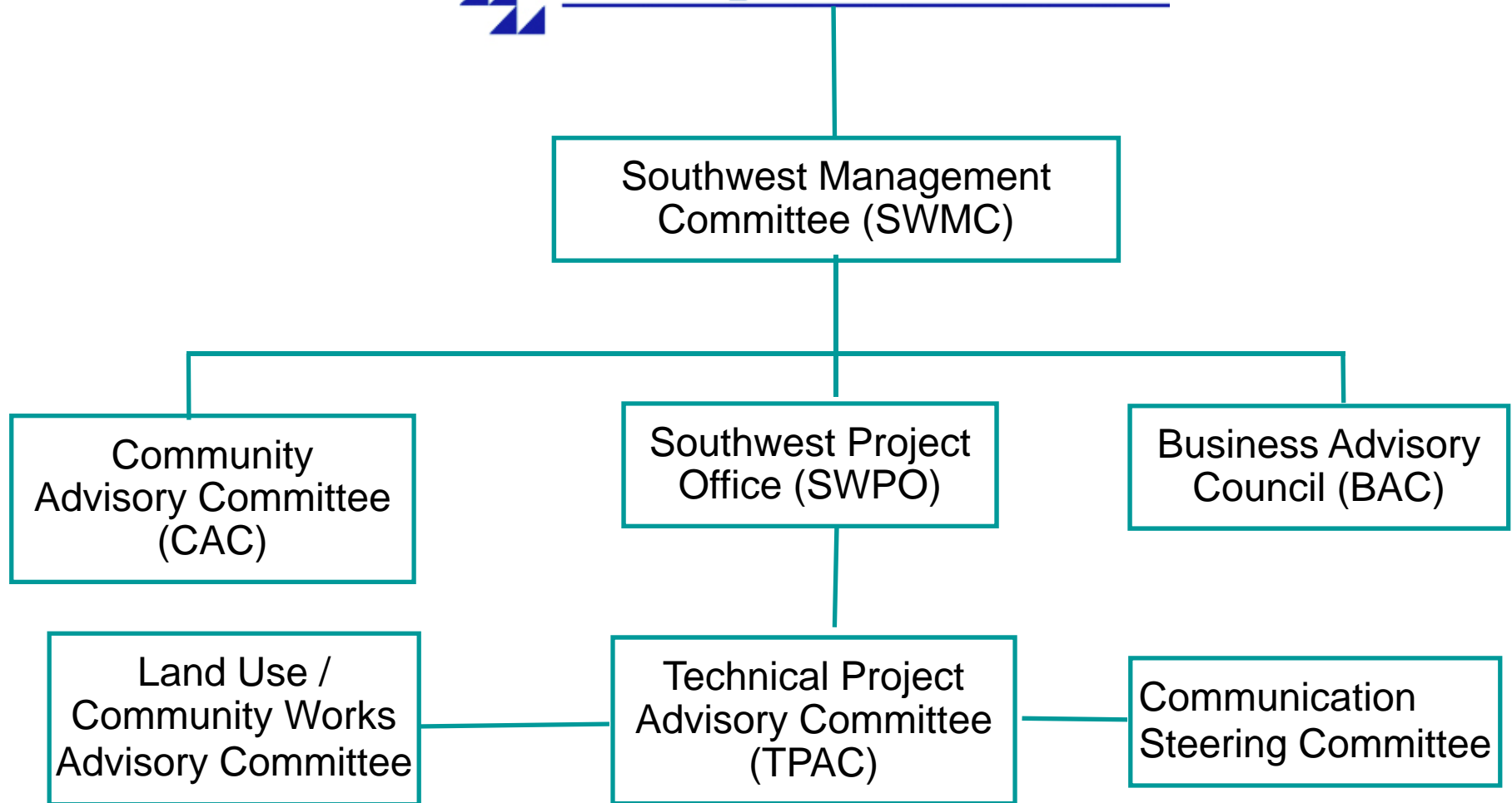
The Southwest LRT Management Committee will advise the Chair of the Metropolitan Council on the design and construction of the proposed light rail line. Issues the Committee will address include, but not be limited to, environmental review, preliminary design, preliminary engineering, final design, overall project cost, construction issues, and business mitigation strategies.



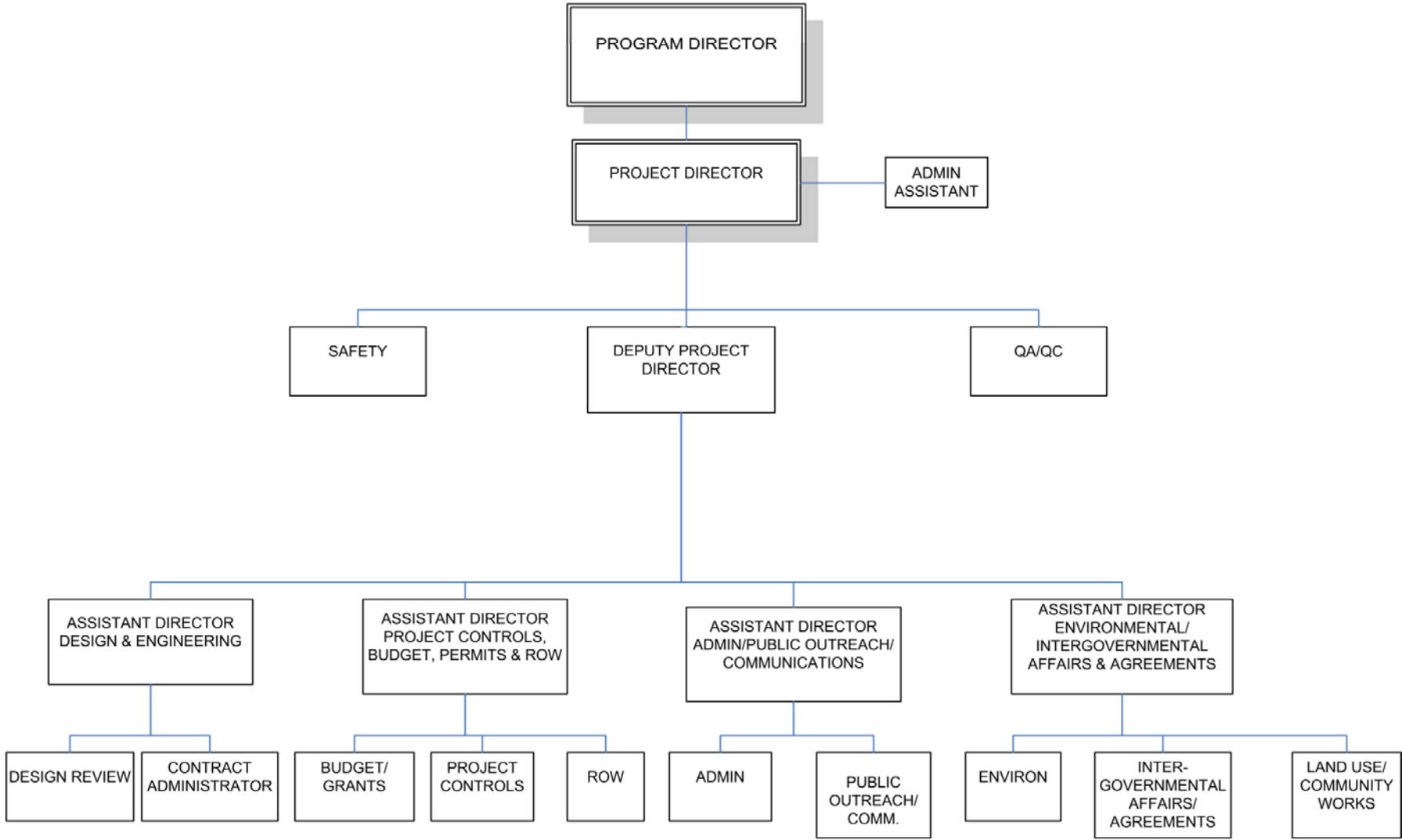
Project Organization



Metropolitan Council



Southwest LRT Project Office



- Locate on SW Corridor
- 25,000 square feet
- Public meeting room(s)
- Bus Service
- Community Works staff co-located

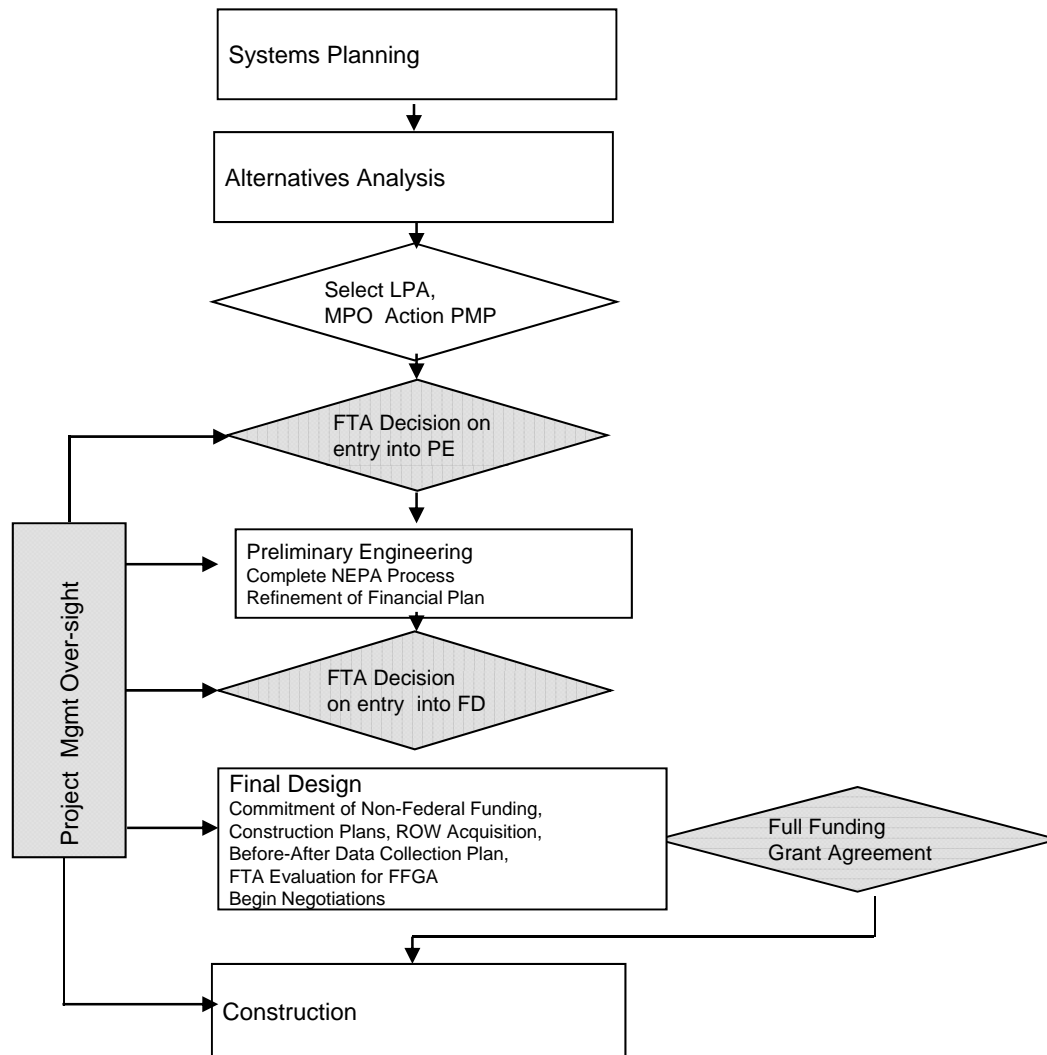


Project Status

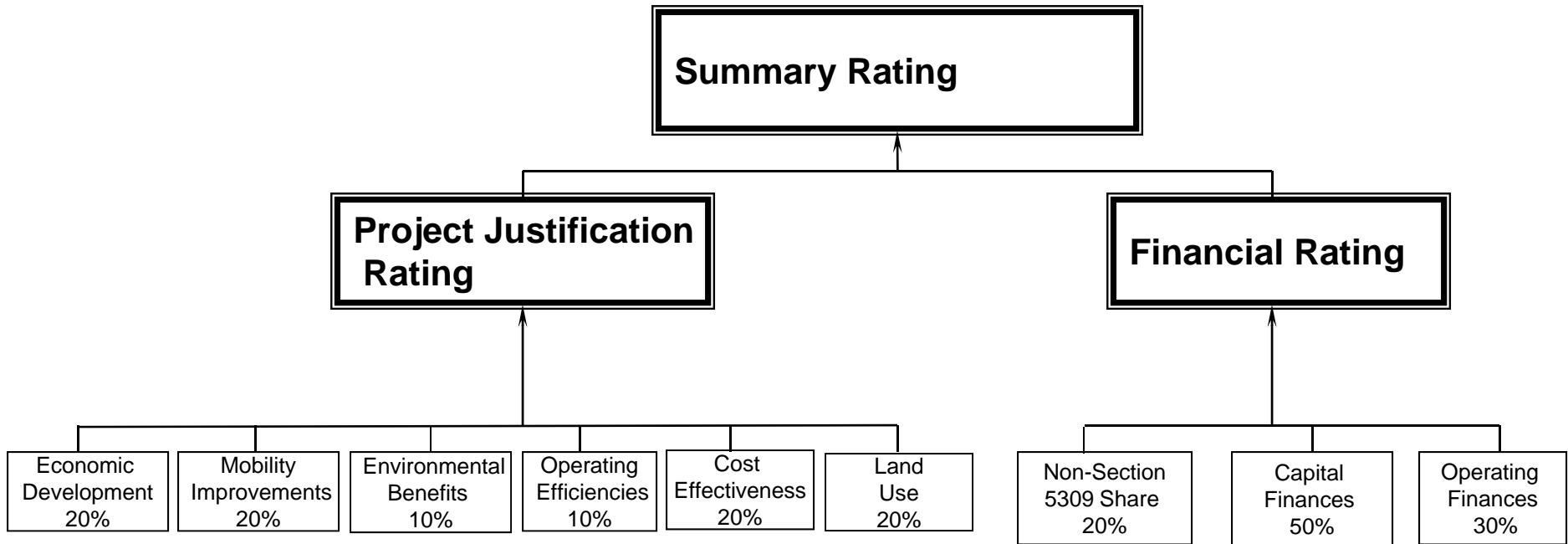


EDEN PRAIRIE ■ MINNETONKA ■ EDINA ■ HOPKINS ■ ST. LOUIS PARK ■ MINNEAPOLIS

FTA New Starts Process



New Starts Project Evaluation



Preliminary Engineering Application



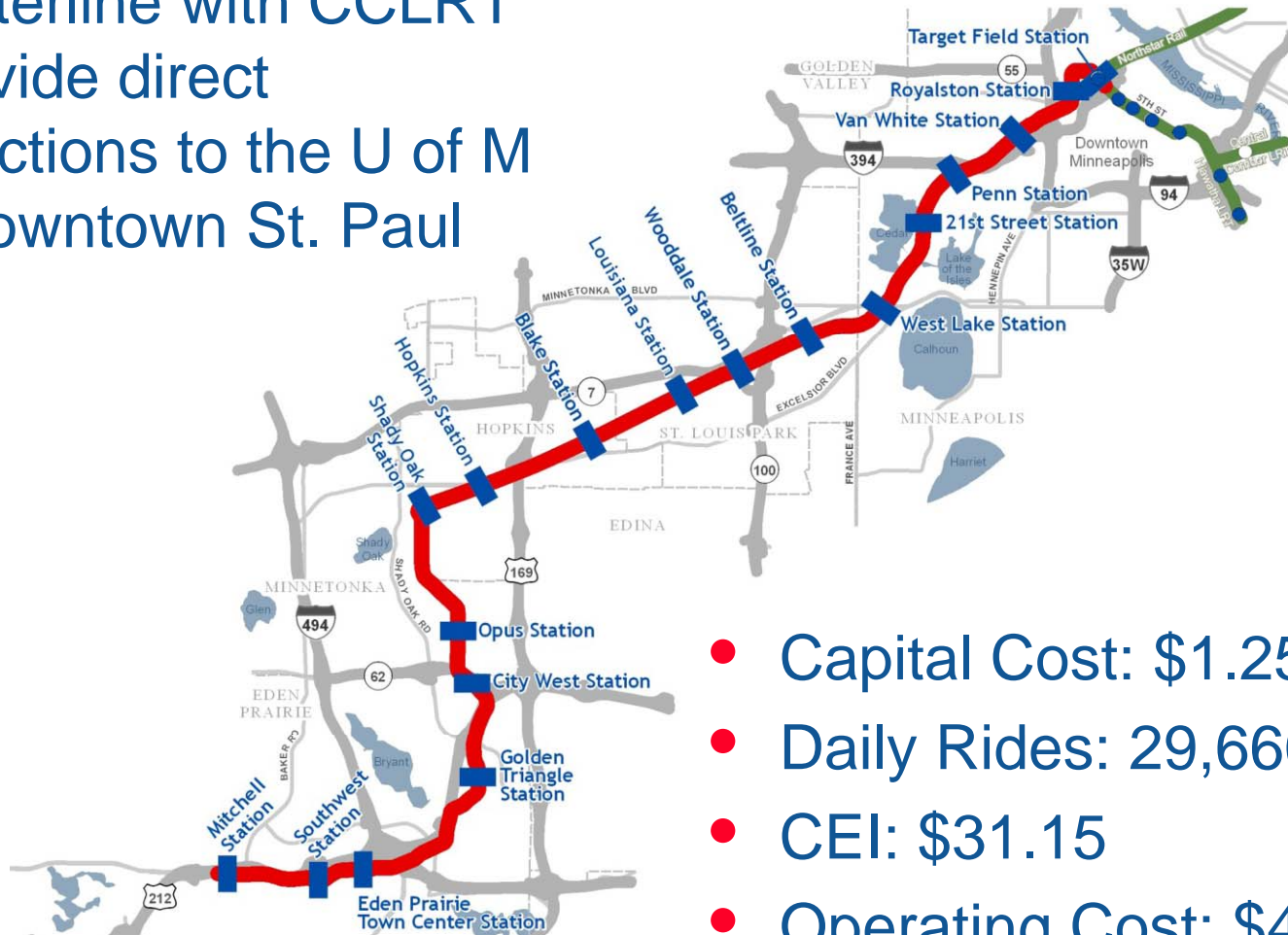
- Complete package submitted August 31
- Ridership Forecast
- User Benefits Estimate
- Capital Cost
- Operating Cost
- Financial Plan
- Land Use/Economic Development



Transitway Description



- 15 miles, 17 stations
- Will interline with CCLRT to provide direct connections to the U of M and downtown St. Paul

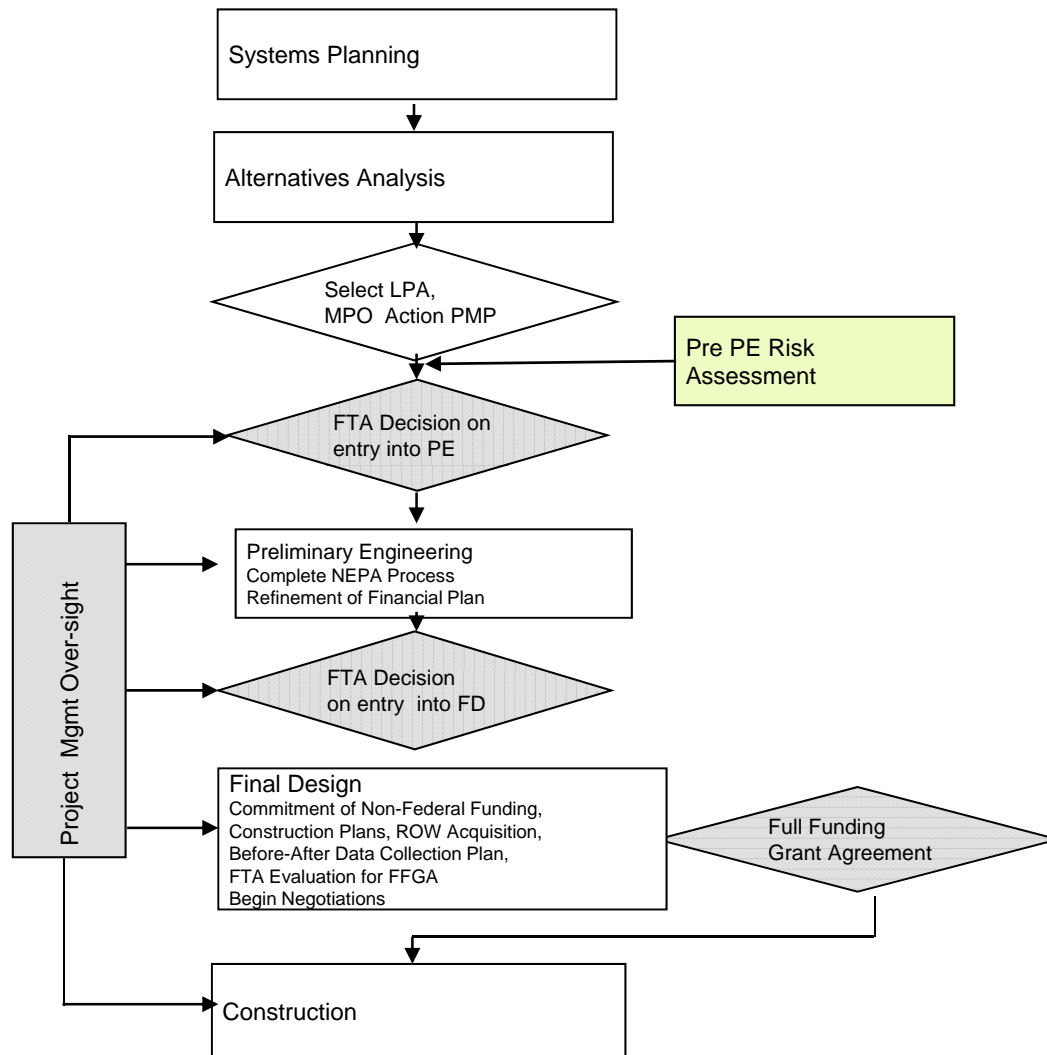


- Capital Cost: \$1.25 billion
- Daily Rides: 29,660
- CEI: \$31.15
- Operating Cost: \$48 million



- Complete draft submitted to FTA June 3
- FTA has provided technical comments
- Awaiting additional FTA technical comments prior to FTA legal sufficiency review
- FTA has not committed to a publication date

FTA New Starts Process (Expanded)



Project Schedule Milestones



Q1 2011

- Publish Draft EIS

Q1 – Q2 2011

- Enter Preliminary Engineering

Fall 2012

- Publish Final EIS

Spring 2013

- Enter Final Design

Winter 2014

- Execute Full Funding Grant Agreement

2014-2016

- Construction

2017

- Begin Revenue Service





Project Funding

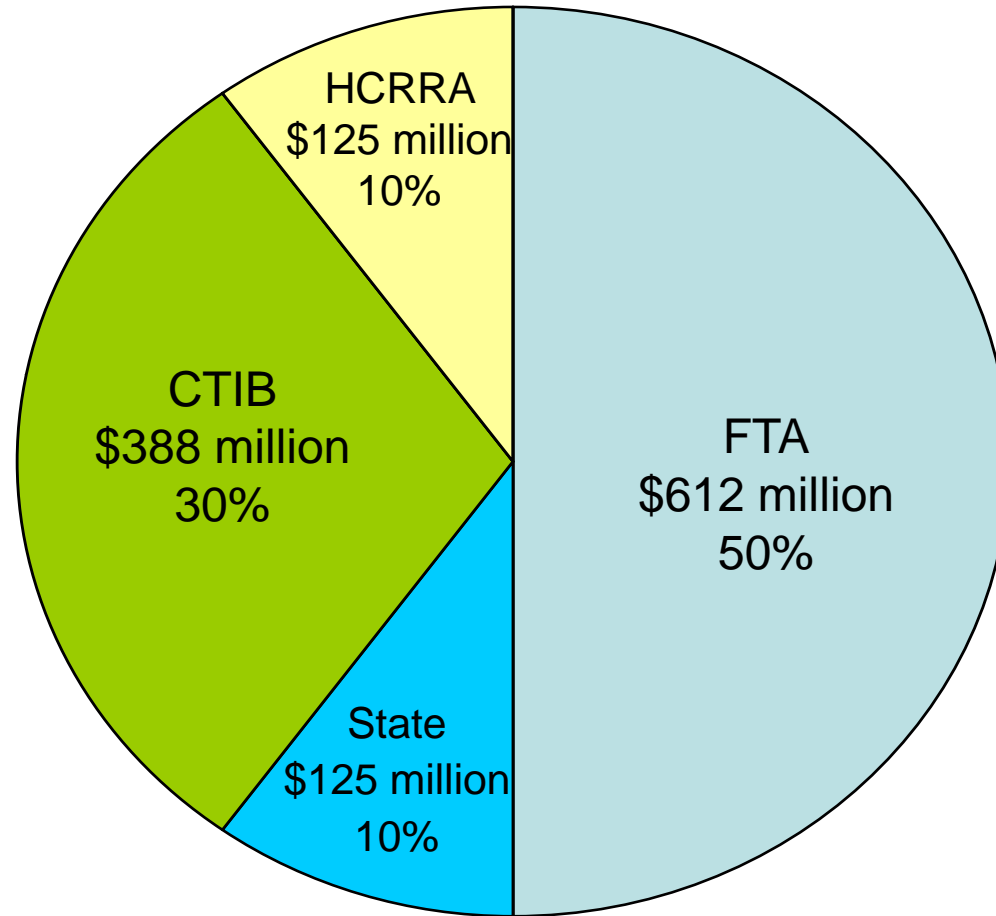


EDEN PRAIRIE ■ MINNETONKA ■ EDINA ■ HOPKINS ■ ST. LOUIS PARK ■ MINNEAPOLIS

Overall Project Funding Required



\$1.25 Billion



Project Funding to Date



- Over \$25 million in local (HCRRA) funds expended for studies & property acquisition
- \$5 million received in 2009 State Bonds for PE/FEIS
- \$7 million received in 2010 CTIB funds for PE/FEIS
- \$3.15 million budgeted in 2010 by HCRRA



2011 Project Funding Needs



- \$13.6 million State Bonds for PE/FEIS*
- \$12.2 million CTIB funds for PE/FEIS
- \$3.25 million HCRRA funds for PE/FEIS

* State funding needed for 2011 and 2012



<http://www.metrocouncil.org/transportation/SW/SouthwestLRT.htm>

- Mark Fuhrmann, Program Director – New Starts Rail Projects
651-602-1942
mark.fuhrmann@metc.state.mn.us
- Chris Weyer, Project Director - Southwest LRT
651-602-1932
chris.weyer@metc.state.mn.us