

Southwest Light Rail Transit (Green Line)



Management Committee December 7, 2011



- Engineering Services Procurement
- Permanent Project Office
- Project Management Team Recruitment
- Community Advisory Committee (CAC)
Reconstitution

Engineering Services Procurement



- Held on 11/8/11 at Met Council Chambers in St. Paul
- Attended by 37 individuals representing 30 firms

- Held immediately following the Pre-Proposal Conference
- Provided opportunity for potential Primes to meet with potential DBE team members
- Included two potential Prime Proposers
- Attended by approximately 40 DBE firms

- Proposer questions period closed 11/23/11
- 31 questions received
- Responses to all questions published 11/23/11 to all RFP holders

Proposals due to Met Council 12/16/11



Southwest LRT Project Office



EDEN PRAIRIE ■ MINNETONKA ■ EDINA ■ HOPKINS ■ ST. LOUIS PARK ■ MINNEAPOLIS

- Site search focused on area within ½ mile of alignment in Eden Prairie, Minnetonka, Hopkins, St. Louis Park, and Minneapolis
- Specifications are similar to Central Corridor Project Office
- Site identification anticipated not later than mid January
- Office mobilization anticipated in early Q2, 2012

- Conducted a competitive RFP Process
- Considered 8 proposals
- Executed agreement with CresaPartners, commercial real estate broker, on 11/17/11
 - Tenant representation firm that specializes in commercial real estate
- Commercial real estate broker fees are paid by the landlord
- Broker contacted all 5 cities for potential leads
- Tour short listed sites in December
- Met Council approval of lease in January 2012

- RFP issued for Interior Design Services on 12/1/11.
 - Proposals due 12/15/11
- Interior Designer contract includes
 - Work with landlord's architect to integrate the furniture plan with office layout
 - Plan furniture purchase
 - Oversee furniture installation

Project Management Team

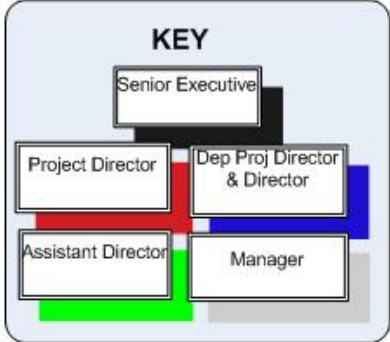


SWPO Organizational Chart



SWLRT PMT		
	11/21/11	R1.02

DEPUTY GM – CAPITAL PROJECTS
PROGRAM DIRECTOR
RAIL NEW STARTS
 Mark Fuhrmann



Construction Safety
 Quality

AGM TSD
PROJECT DIRECTOR
SWLRT
 Chris Weyer

EXEC ASST
 Lynne Hahne

DEPUTY PROJECT DIRECTOR, TSD SWLRT
 Craig Lamothe

DIRECTOR, TRANSIT SYSTEMS DESIGN & ENGINEERING
 Jim Alexander

ASSISTANT DIRECTOR PROJ CONTROLS/ BUDGET-GRANTS/ ROW-PERMITS (Vacant)

ASSISTANT DIRECTOR ENVIRONMENTAL/ AGREEMENTS (Vacant)

ASSISTANT PROJECT DIRECTOR (HennCo) COMMUNITY WORKS
 Katie Walker

ASSISTANT DIRECTOR ADMINISTRATION/PUBLIC INVOLVEMENT/ COMMUNICATION
 Robin Cauffman

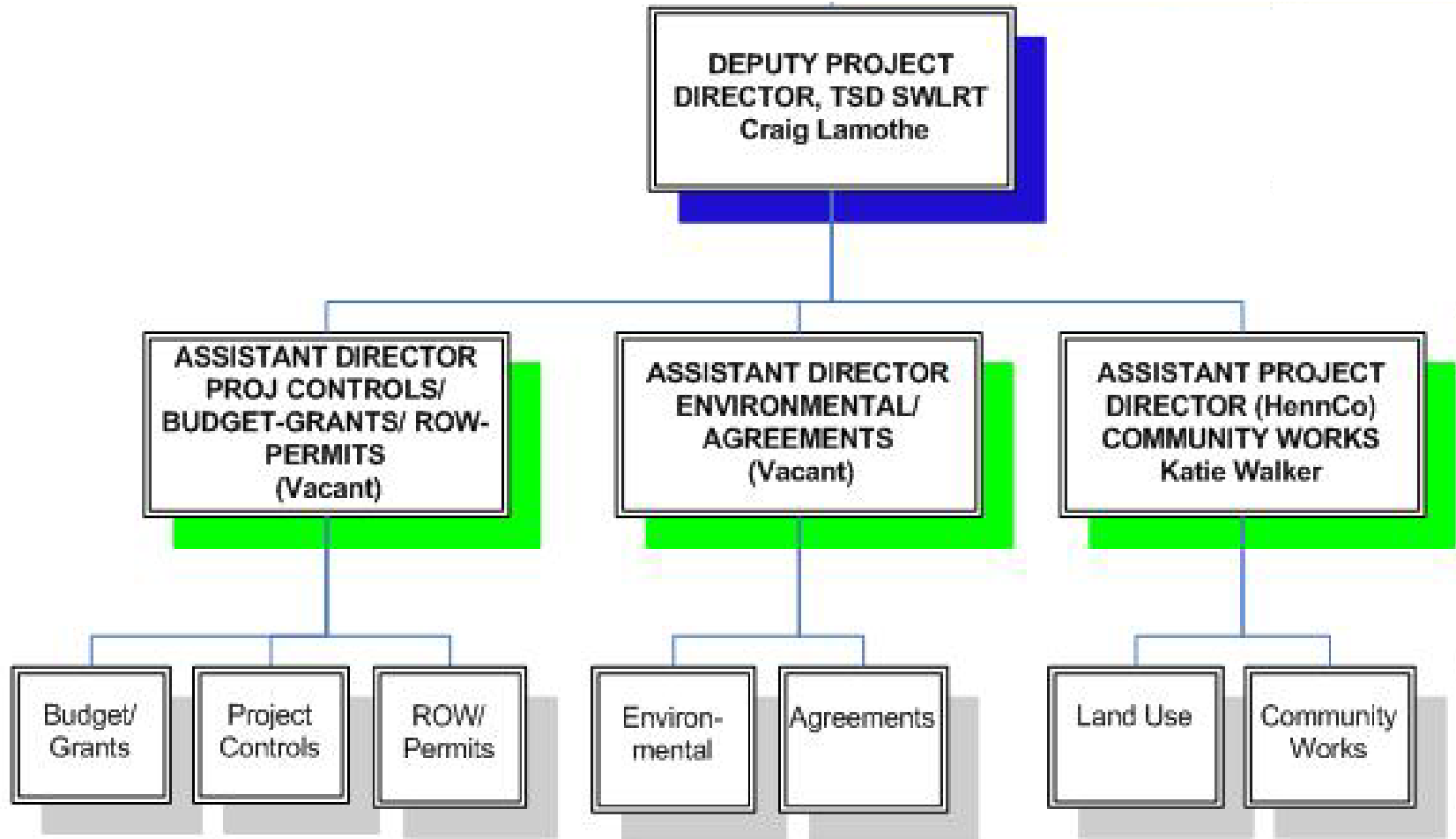
Budget/ Grants
 Project Controls
 ROW/ Permits

Environmental
 Agreements

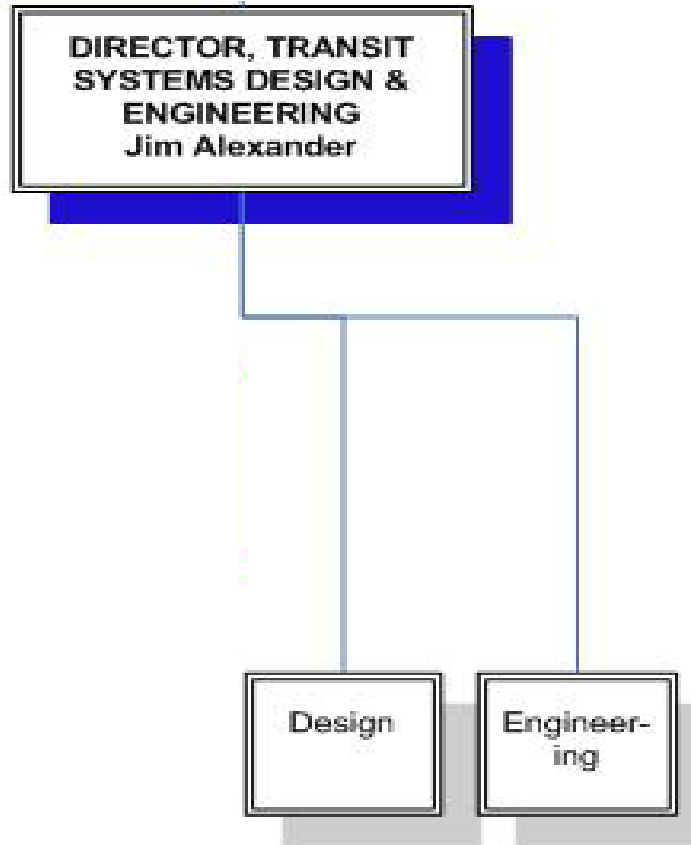
Land Use
 Community Works

Design
 Engineering

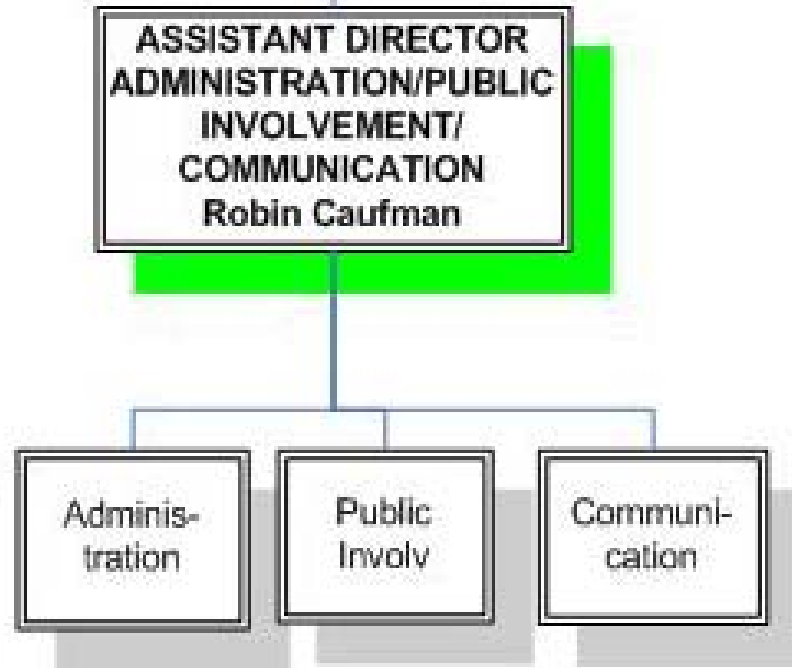
Administration
 Public Involvement
 Communication



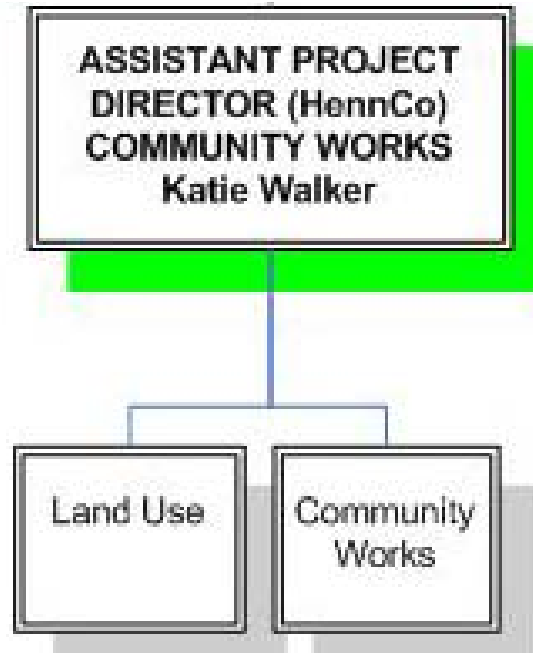
- Manage the six departments responsible for Project Controls, Budget, Grants, Right-of-Way Permitting, Environmental, and Agreements
- Coordinate with program wide aspects related to Design, Construction, Administration, Procurement, Public Involvement, and Communications
- Coordinate with Hennepin County Community Works initiatives related to land use and Transit Oriented Development



- Project Manager, Engineering Services Contract
 - Support Project Controls
 - Project schedule and cost estimating
 - Conduct Travel Demand Forecasting
 - Complete Preliminary and Advanced Preliminary Engineering
 - Complete Final Design
 - Provide design support during construction
 - Support activities during transition to revenue service
- Manager, SWPO design and engineering staff
 - Design
 - Stations and integrated station public art
 - Integrate interface with adjacent Transit Oriented Development
 - Operations and Maintenance Facility
 - Engineering
 - Civil, Utilities, Track, Structures, Systems, Traffic



- Prepare, implement and maintain the Public Involvement and Communication Strategic Plan for SWLRT
- Convene the Communication Steering Committee
- Oversee the administration function of the SWPO and CCPO
- Hire Outreach staff based on needs
- Work with Hennepin County on Community Advisory Committee



- Act as the principal liaison between Southwest LRT Community Works program and the Southwest LRT Project Office for the integration of LRT engineering with land use/development
- Manage the integration of land use and LRT engineering to achieve the goals of the Corridors of Opportunity Initiative
- Act as the principal liaison between Hennepin County and the Southwest LRT Project Office

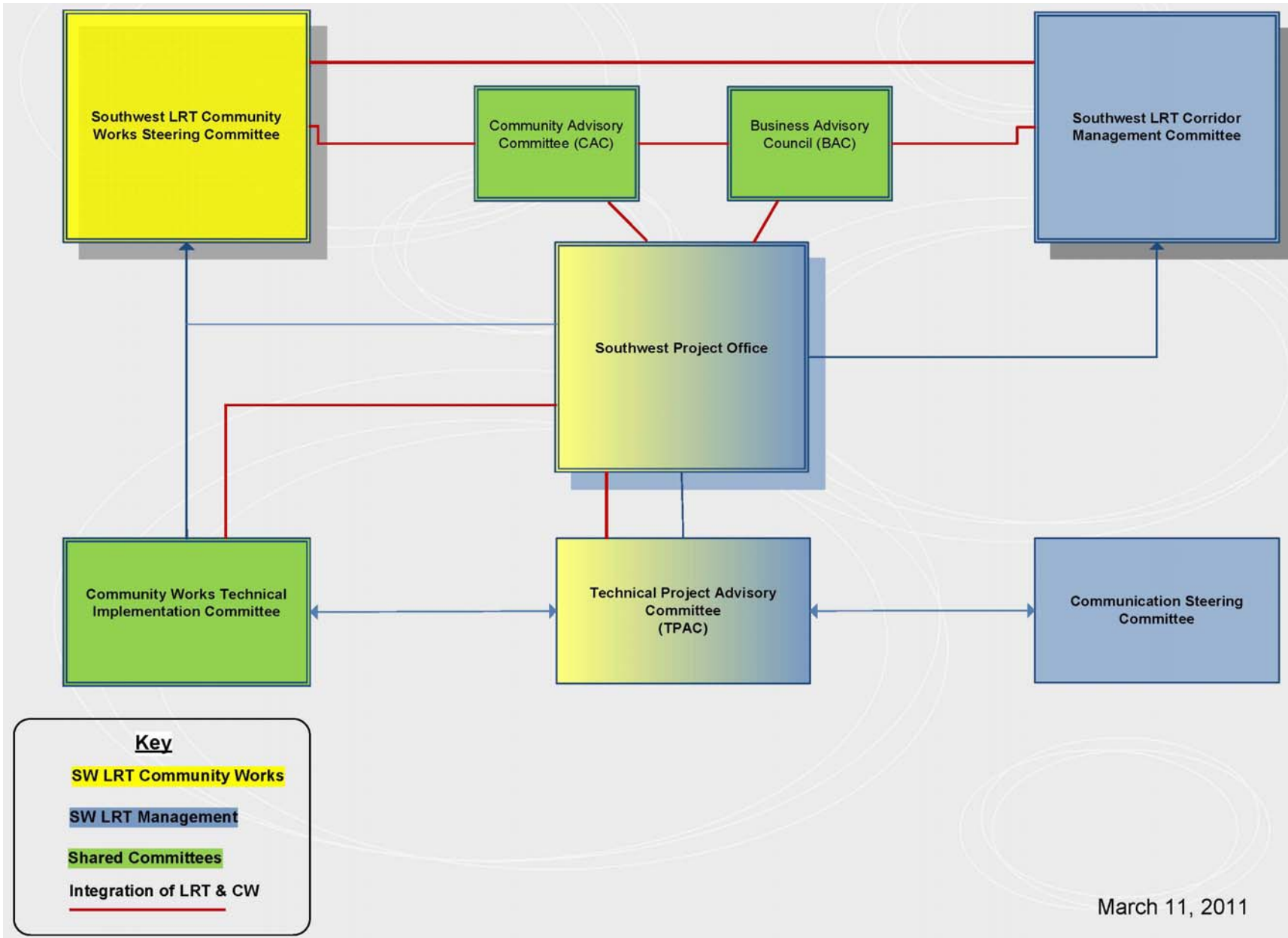


Community Advisory Committee



EDEN PRAIRIE ■ MINNETONKA ■ EDINA ■ HOPKINS ■ ST. LOUIS PARK ■ MINNEAPOLIS

Southwest LRT and Community Works Integration



- 32-35 members
- Representation from existing groups plus additional seats for the following groups:
 - City of Edina
 - Disabled Community
 - Transit Users
 - Active Living/Complete Streets
 - Under Represented Groups
 - Housing Interests
 - Biking/Trail Interests
 - Youth Group
 - Senior Group
 - Educational Institutions

- December - send invitation letter seeking nominations
- February - identify members
- Spring 2012 - hold first meeting and orientation sessions

Online:

www.metrocouncil.org/transportation/SW/SouthwestLRT.htm

Email:

southwestLRT@metc.state.mn.us

