



CAC/BAC Joint Meeting

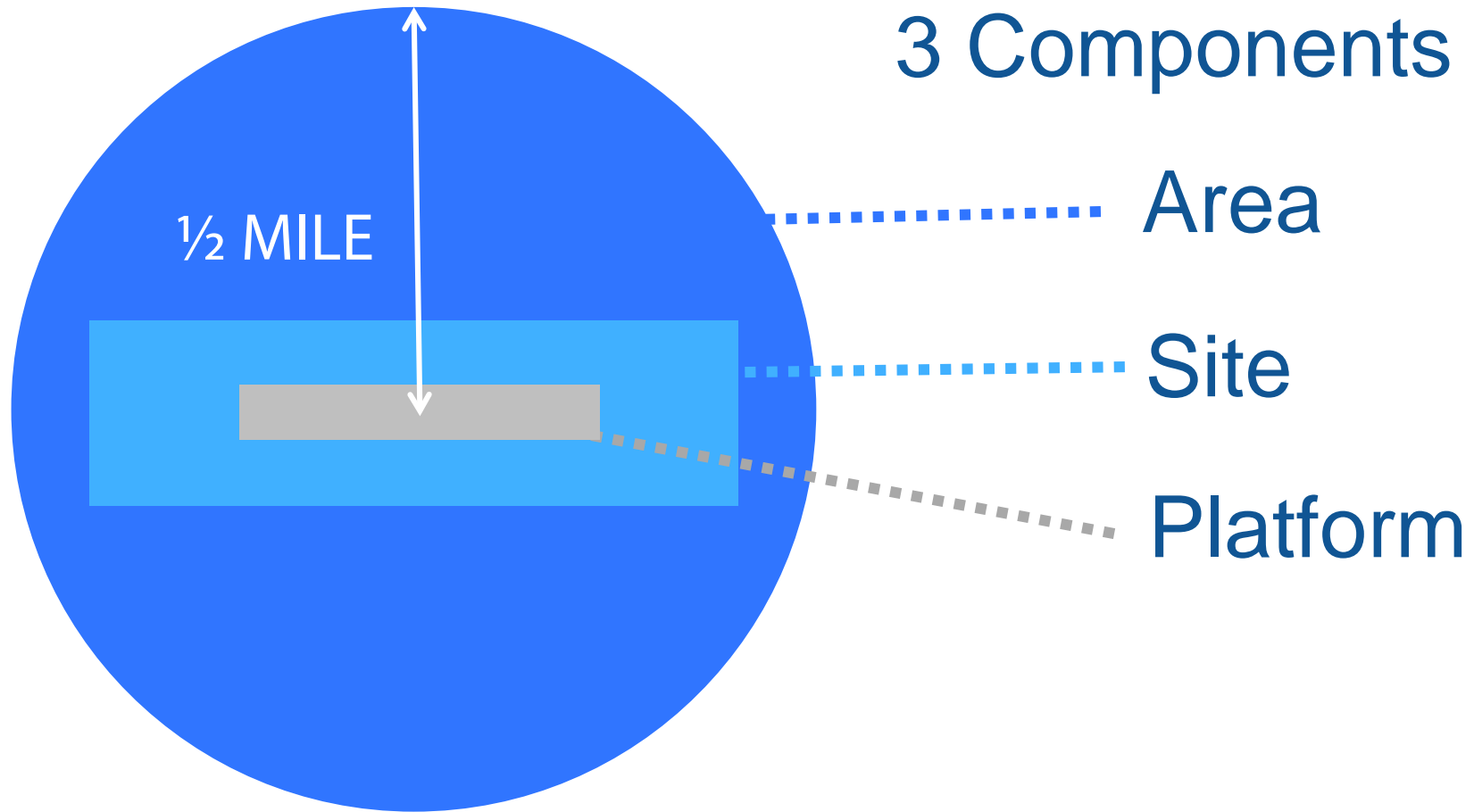
August 8, 2016



Station Design Consistency



BLRT Stations



Station Area Planning

- ½ mile radius of station

Figure 3.1: Penn Avenue Station Area

This map shows the half mile buffer and 10 minute walking extent for the station area.

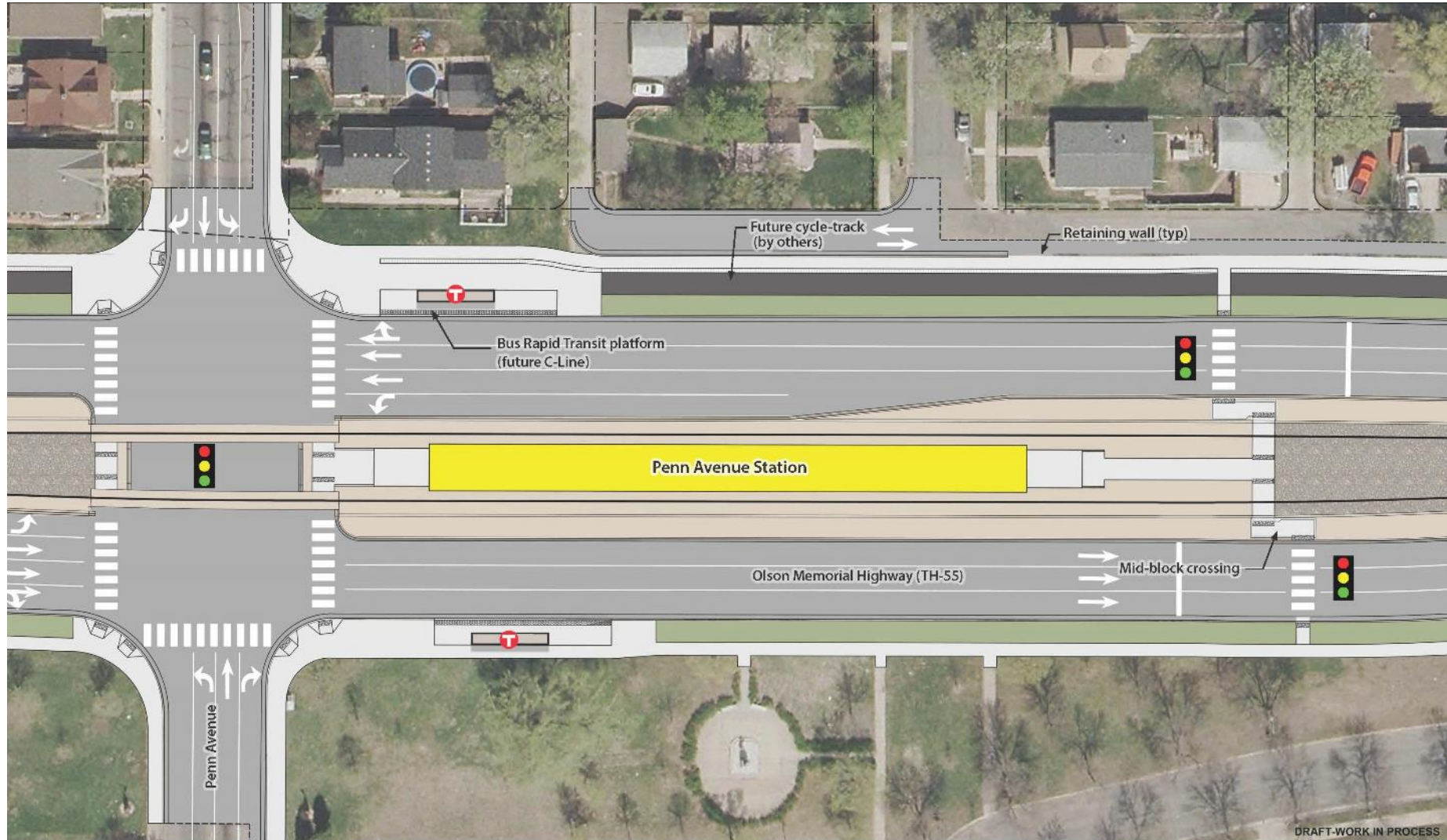
- Planned LRT Station
- Bottineau LRT Alignment
- LRT Station Half Mile Buffer
- Adjacent Station 10-minute Walking Extent
- Penn Station 10-minute Walking Extent
- Railroad



Image provided by Hennepin County



Station Site



DRAFT-WORK IN PROCESS



Station Site Elements

- Pedestrian access
- Bike facilities
- Wayfinding
- Landscape
- Stormwater
- Bus facilities
- Passenger drop-off
- Park-and-ride



Station Platform

- Ticket vending/validation
- Transit information
- Passenger amenities
- Passenger safety





Real Time Departure Information

Updated real time departure information for next two trains

Security Cameras

Monitored 24/7 for enhanced station safety

Destination Information

Emergency Phone

Direct contact to Rail Control Center

Platform Tactile Edge

ADA Compliant, Creates a necessary buffer for riders between edge or platform and rail



Station Name

Platform Shelter

Protect from weather elements

Benches

Provide relief for passengers



Shelter Roof

Protects passengers from the weather elements, enhances station design

Railings

ADA Compliant, enhances station design, provides relief, and helps to channelize passengers

Rider Alert Sign

Information regarding train shut down, platform information, alternative routing



Prohibited Behavior Sign

Information about rules on the platform and while riding the train

Center Platform Station Access

One platform for the station, access to both east and westbound trains, platform access from both ends





Information Kiosk

Route map, station information and schedule

Waste Receptacle

Maintenance and Facilities collects the waste from station platform

Card Validators

GoTo Fare Cards and UPass for automated fare validator

Lighting

Access and platform lighting

Speakers

Announcements from Rail Operations, next train departure information, train arrival to platform information, safety messaging

Heaters

Push for heat button, provide additional comfort for passengers in the cold weather

Ticket Vending Machine

Accepts cash and credit/debit cards, pay individual fare or multiple, re-load GoTo Pass



How Context and Character Informs Design



Approaching MSP Airport





MSP Airport





MSP Airport



Facilitated Design Conversations



BLRT Stations

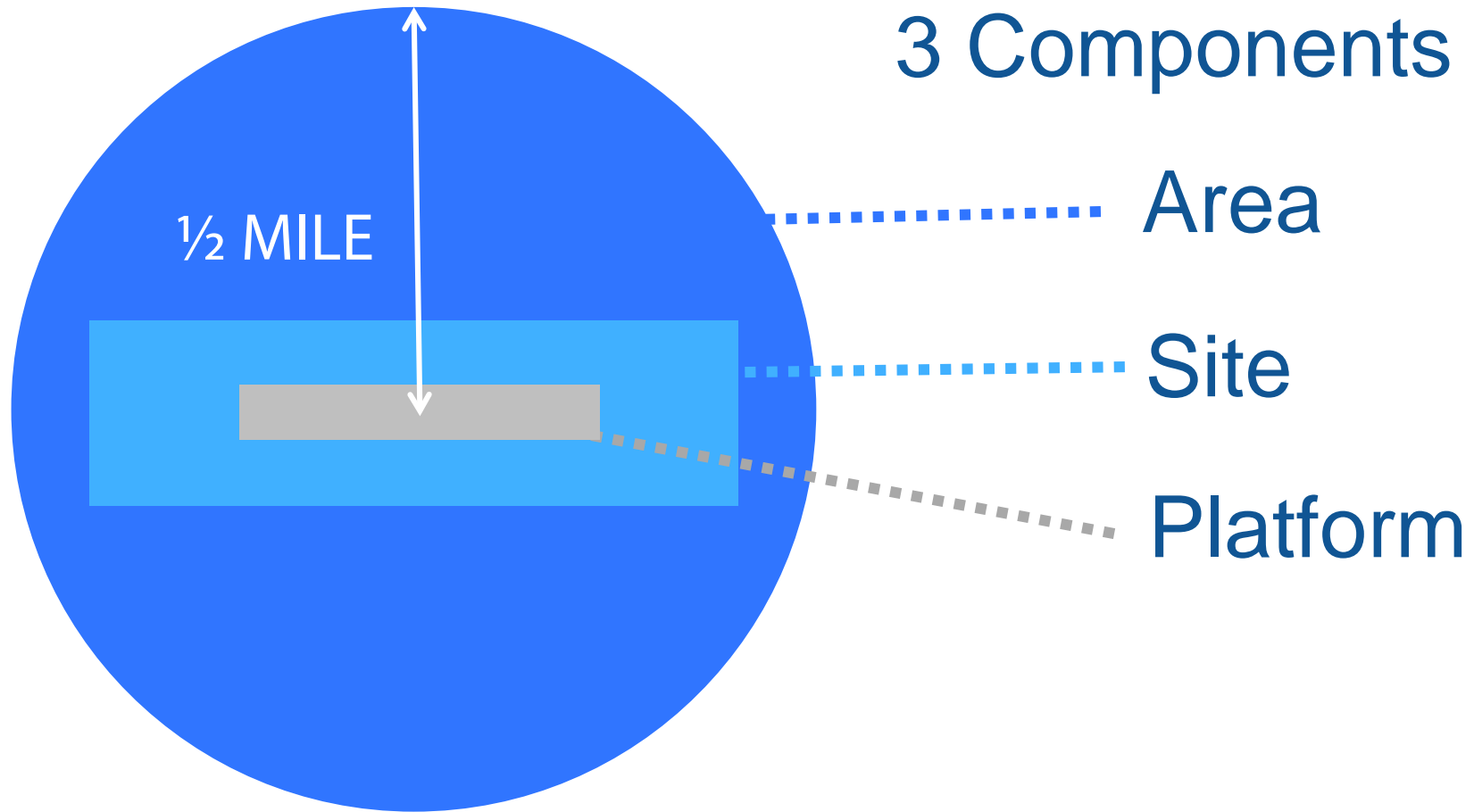


Table Questions:

- Think about the station site now. How do you feel about it? How do you want to feel about it in the future?
- Tell us what you think are key features of the station site now?
- What elements would you like to see strengthened in the future?
- What elements would you like to see minimized/no longer exist in the future?



LRT Station Platform and Site Design Application





Blue Line: 38th Street Station





Blue Line: 38th Street Station





Blue Line: Fort Snelling Station





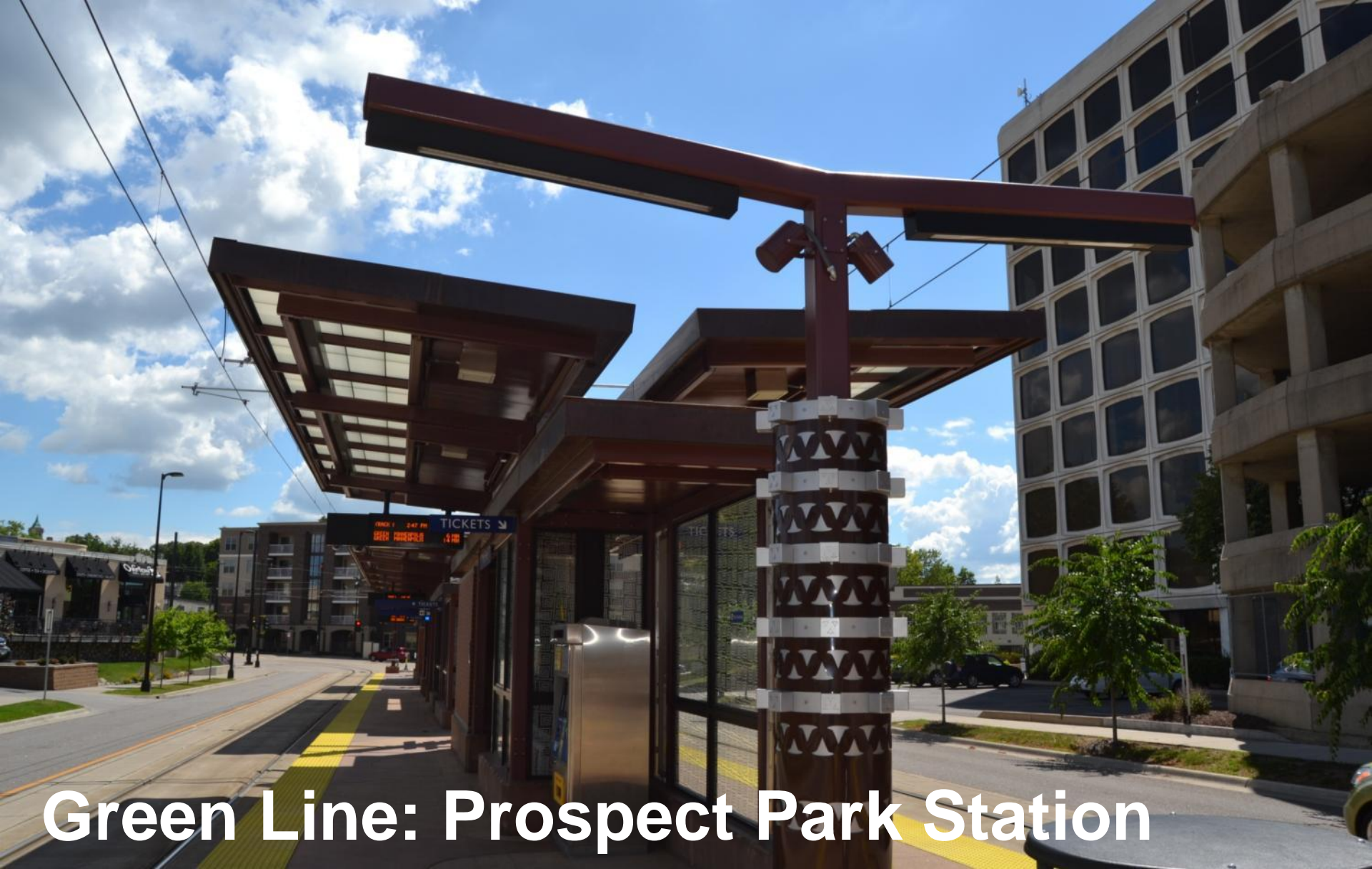
Blue Line: Fort Snelling Station





Green Line: Prospect Park Station





Green Line: Prospect Park Station



Southwest LRT: Blake Rd Station



Draft - Work in Process



Southwest LRT: Blake Rd Station



Draft - Work in Process



Southwest LRT: West 21st St Station



Southwest LRT: West 21st St Station



Draft - Work in Process



Station Design Variability



Sect. 106 (Historic Properties) Interpretation

- Requires Federal agencies to take into account the effects of their “undertakings” on historic properties
- Osseo Branch Line/Great Northern Railway Historic District (BNSF corridor) and the Grand Rounds Historic District (Theodore Wirth Segment) contain stations will include interpretive elements:
 - 63rd Ave (Osseo Branch)
 - Bass Lake Rd (Osseo Branch)
 - Robbinsdale (Osseo Branch)
 - Golden Valley Rd (Osseo Branch & Grand Rounds)
 - Plymouth Ave (Osseo Branch & Grand Rounds)

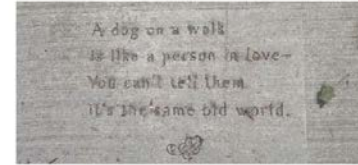


What are Interpretive Elements?

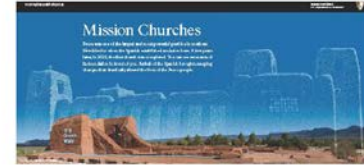
- Interpretation is a communication process for the public to discover the meaning and significance associated with historic resources; it tells a story



Creative Signage



Stamped Concrete



Graphic Panel

SEE



Multiple Languages



Etched Benches



Site-Specific Installation



Braille



Self Reflections/Photo-Ops



Tactiles

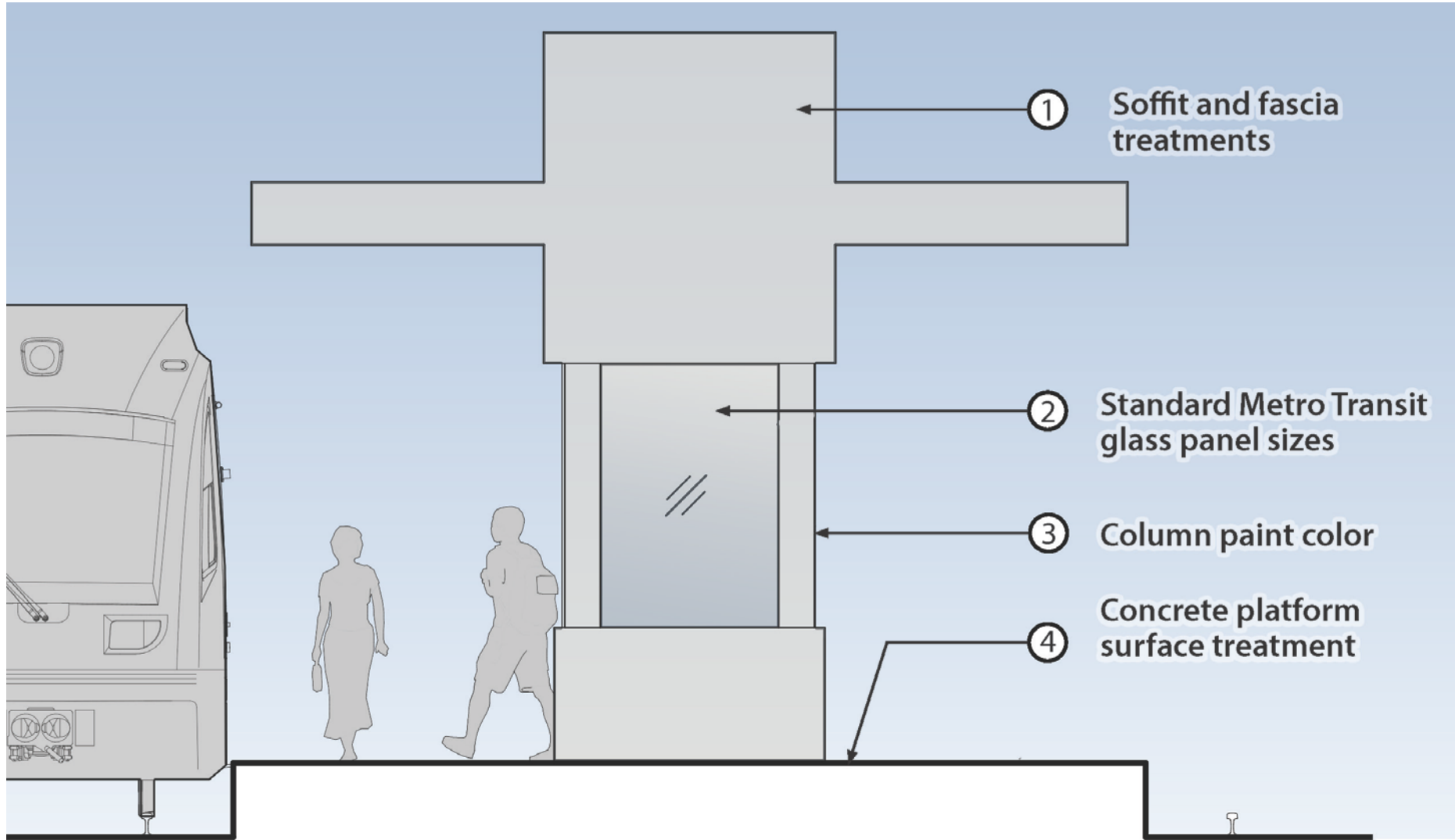


Interactive Graphics

Platform Variation Opportunities



Platform Section Diagram



Draft: Work in Process

Wrap Up/Next Steps

- Site plan refinement
- Platform element development
- Continuing project partner coordination
- Ongoing community outreach/input

