



Corridor Management Committee

February 19, 2015



Today's Topics

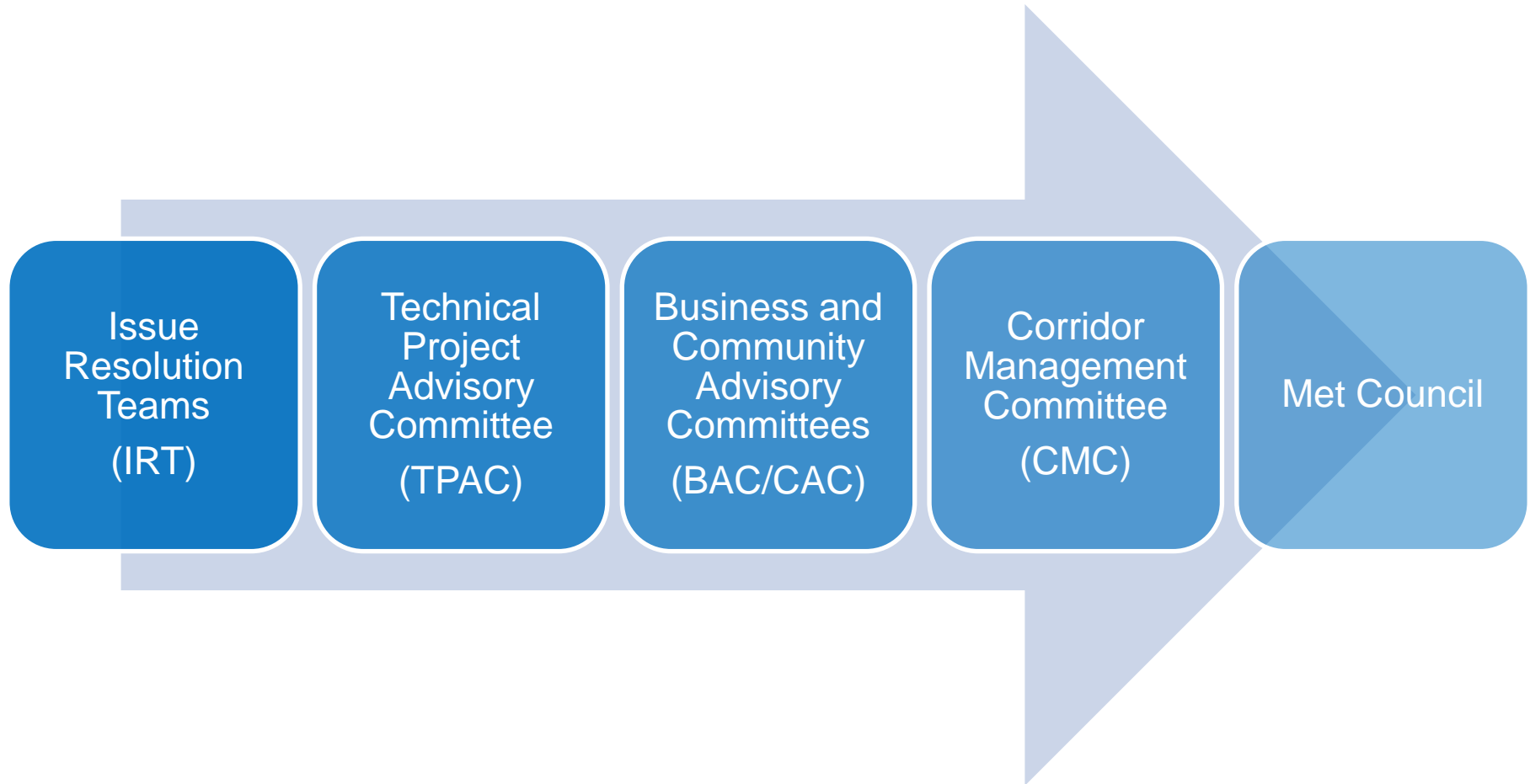
- Advisory Committee Update
- Technical Issue #4: Golden Valley Road and Plymouth Avenue Station Update
- Technical Issue #10: West Broadway (CSAH 103) Update
- Technical Issue #13: Freight Rail Update
- Next Meeting



Advisory Committee Update



Issue Resolution Process



Technical Project Advisory Committee (TPAC) Membership

Staff	Organization
Joe Gladke	Hennepin County
Patricia Fitzgerald	Hennepin County
Andrew Lutaya	MnDOT
Jeni Hager	City of Minneapolis
Jack Byers	City of Minneapolis
Jason Zimmerman	City of Golden Valley
Jeff Oliver	City of Golden Valley
Richard McCoy	City of Robbinsdale
Marcia Glick	City of Robbinsdale
John Sutter	City of Crystal
Wayne Houle	City of Crystal
Jesse Struve	City of Brooklyn Park
Kim Berggren	City of Brooklyn Park
Clifton Swenson	Minneapolis Park and Recreational Board

Business and Community Advisory Committee Update

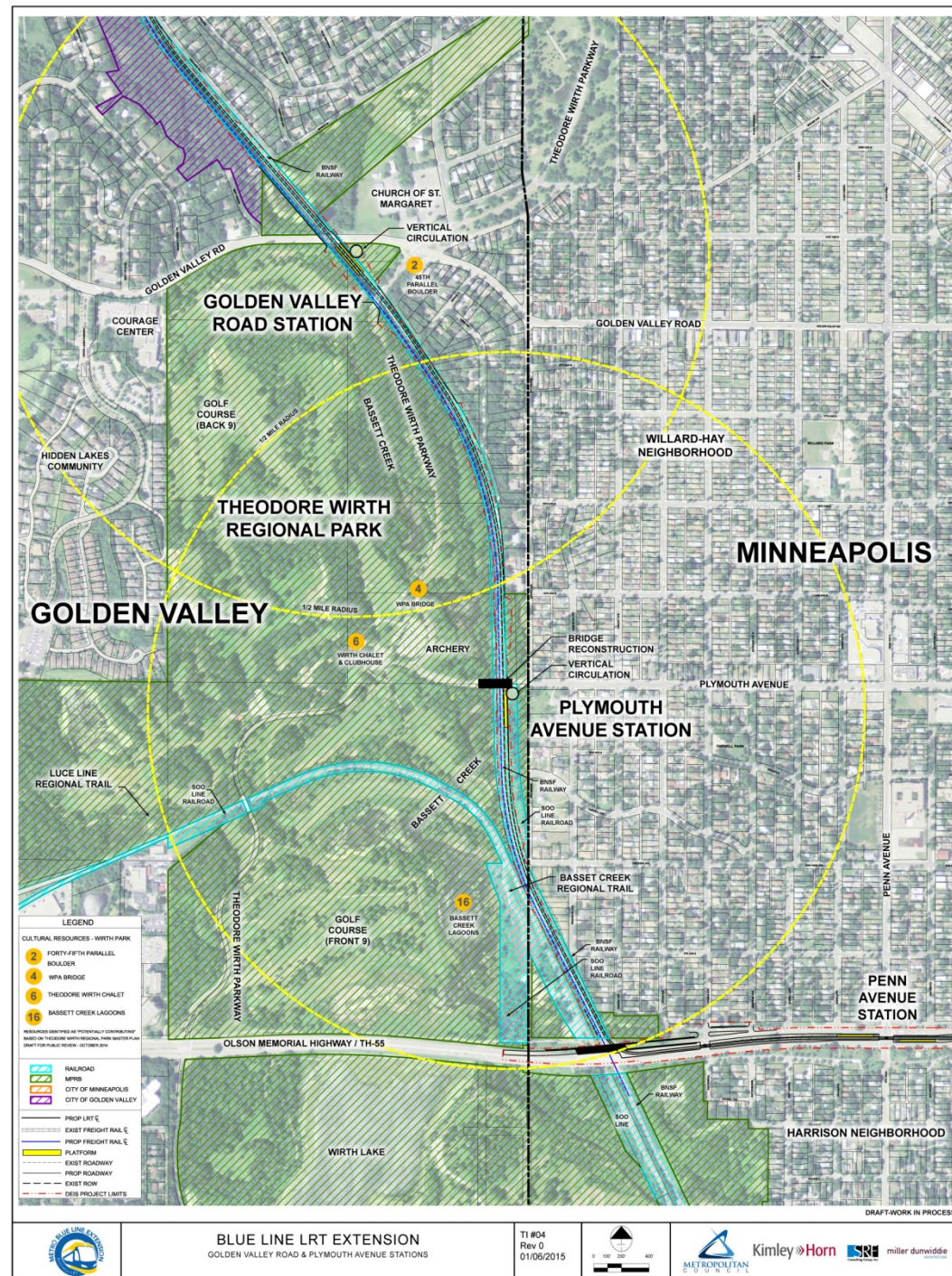
- Sent letters of invite: January 29, 2015
- Receive nominations: March 6, 2015
- Hold joint BAC/CAC kick-off: late March/early April



Technical Issue #4: Golden Valley Road and Plymouth Avenue Stations



Technical Issue #4



Technical Issue #4

- Technical analysis underway for both stations
- Analysis reviewing quantitative factors
 - Population & employment, cost impacts
- Analysis reviewing qualitative factors
 - Access for underserved populations, connections to key destinations, accessibility, access to regional parks
- Community meeting February 26
- Share community input at March CMC meeting



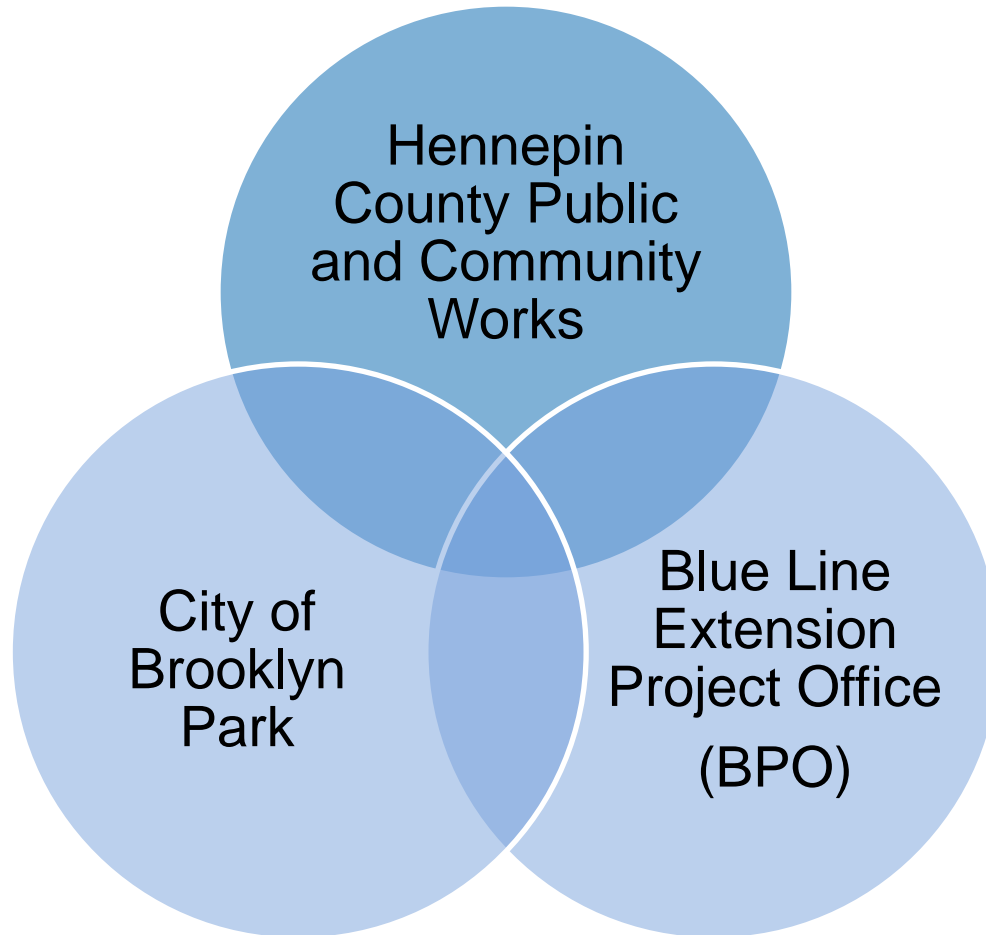
Technical Issue #10: West Broadway (CSAH 103)



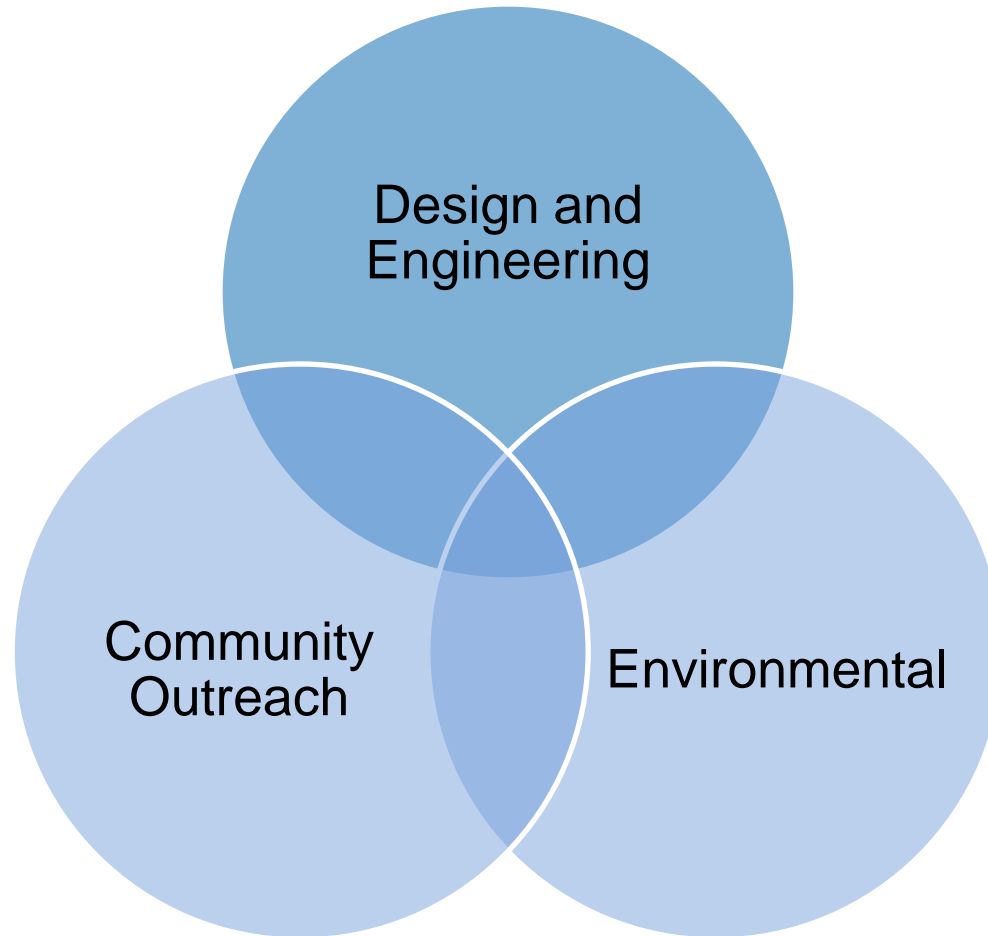
Technical Issue #10: Candlewood to 93rd Ave.



Integrated Agency Approach



Integrated Discipline Approach



Integrated Approach For Roadway Design

- Road project covered under Minnesota environmental rules
- Hennepin County continues as lead agency, in partnership with BPO, Brooklyn Park, and stakeholders
- Environmental review complete late Fall 2015
- Final roadway design advances in tandem with Blue Line Extension LRT design
- Allows combining roadway construction with Blue Line Extension to minimize construction impacts



Public Engagement Path

- **February 2: Presentation to City Council**
 - Design, environmental and public engagement plan approach
- **February/March**
 - Neighborhood and business meetings
 - BLRT CMC update: Feb 19
 - Community open house #1: March 5
 - City Council update: March 9



Public Engagement Path

- **March**

- Neighborhood and business meetings
- BLRT CMC update: March 12
- Community open house #2: March 19
- City Council update: March 23

- **April**

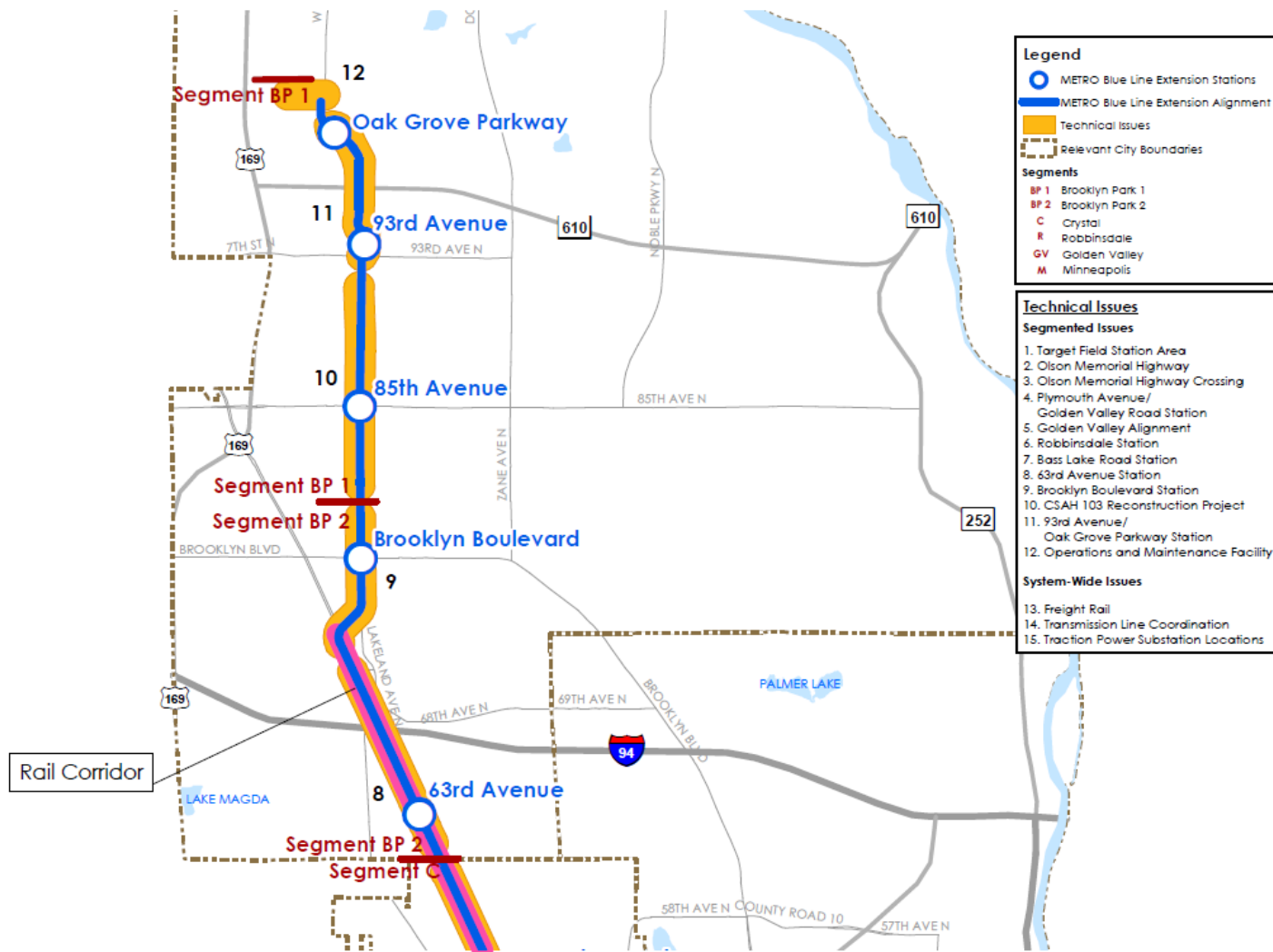
- Neighborhood and business meetings
- Community open house #3, if needed: April 7
- BLRT CMC update: April 9

April 27: Staff Recommendation/City Council endorsement on design/environmental approach



Technical Issue #13: Freight Rail Update





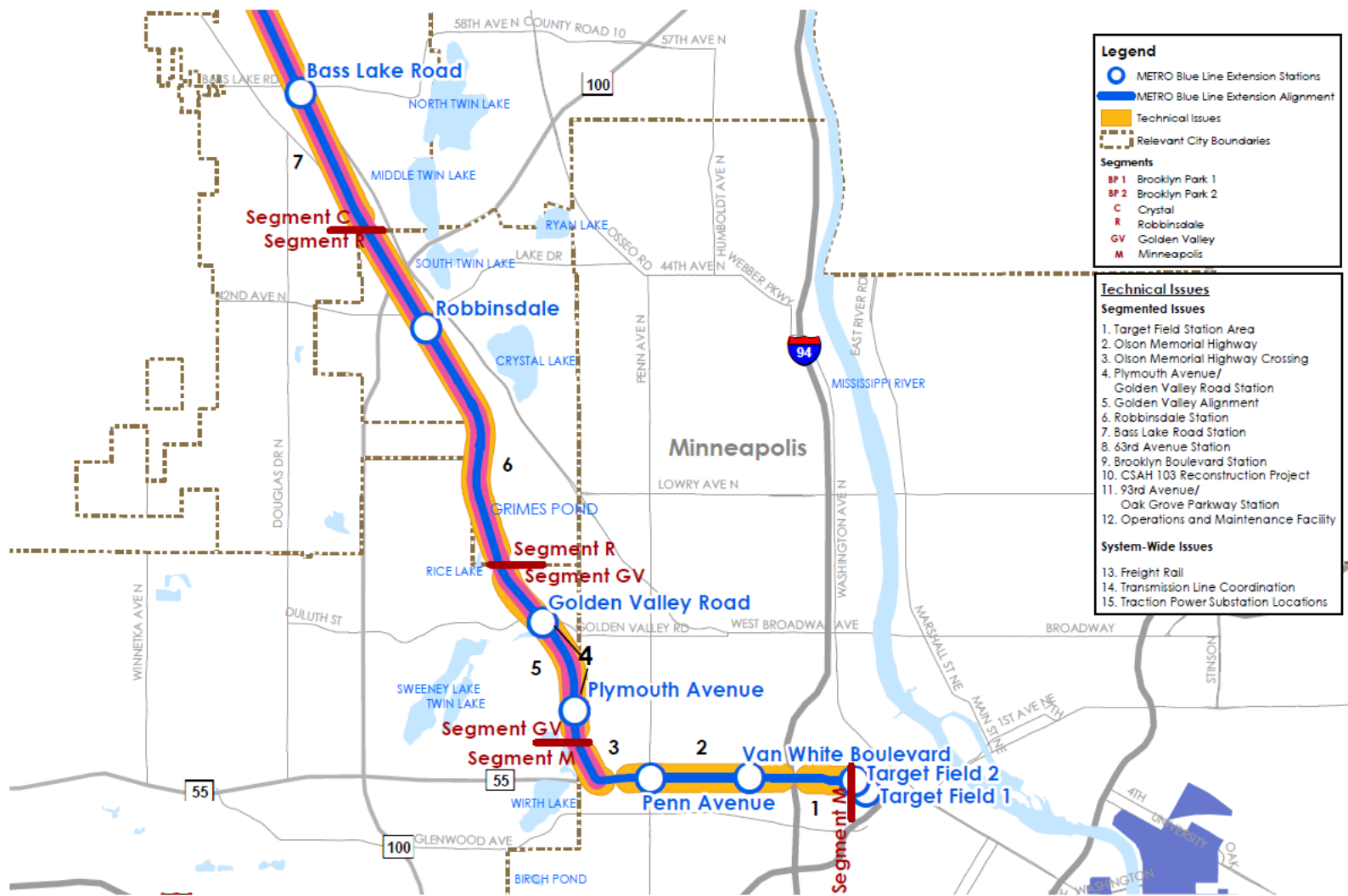
METRO Blue Line LRT Extension Technical Issues



0 0.5 1 Miles

Kimley»Horn





METRO Blue Line LRT Extension Technical Issues

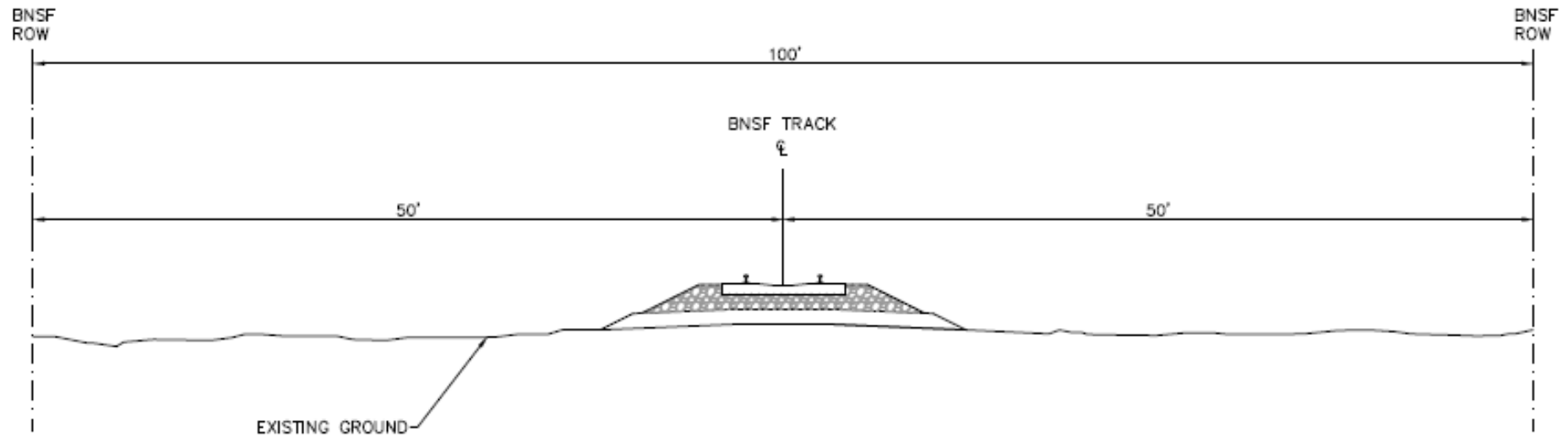


0 0.5 1 Miles

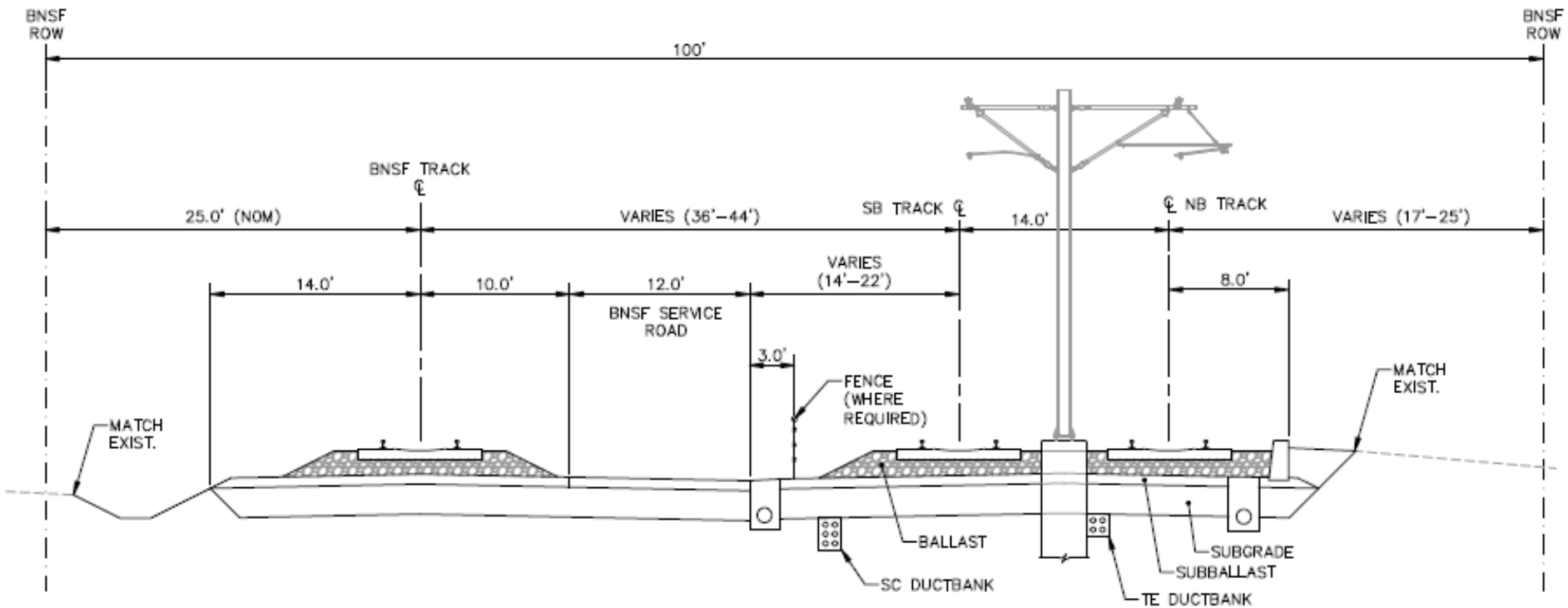
Kimley»Horn



Existing BNSF Corridor



Proposed BNSF Corridor: Typical Section



Coordination

- Recurring monthly meeting with BNSF
- BNSF indicated LRT design and operations cannot preclude future track or capacity improvements
- Key issues include design, treatment of Xcel Energy transmission lines, safety



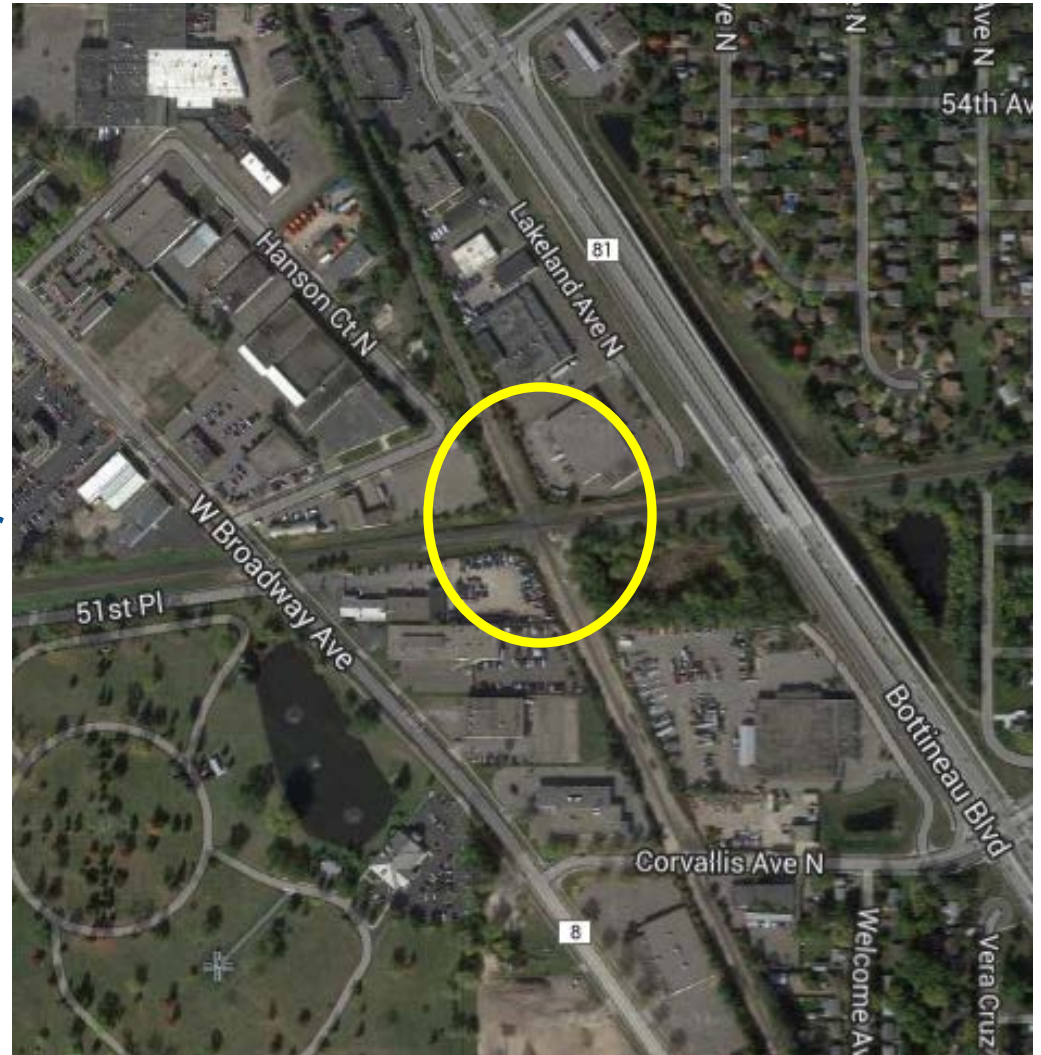
Safety

- Safety is a mutual goal; BNSF and BPO agree some level of mitigation is necessary
- Physical separation may be required depending on distance between freight and LRT track centerlines
 - Continue to explore other alternatives to physical separation



Potential CP-BNSF Connection in Crystal

- BNSF and CP in discussing connecting eastbound CP mainline to southbound BNSF
- BNSF acknowledges concerns raised by BPO, project partners and other stakeholders
- BNSF and BPO remain committed to working together





**Next Meeting:
Thursday, March 12
1:00 PM – 2:30 PM**



More Information

[About Us](#) | [News & Events](#) | [Data & Maps](#) | [Publications](#) | [Doing Business](#) | [Council Meetings](#) | [Contact Us](#) | [Employment](#)

[COMMUNITIES](#) | [PARKS](#) | **[TRANSPORTATION](#)** | [WASTEWATER & WATER](#) | [HOUSING](#) | [PLANNING](#)



METRO BLUE LINE EXTENSION

- Route
- Stations
- Environmental
- Timeline
- Project Partners

METRO BLUE LINE EXTENSION

Bottineau Transitway – Minneapolis & Northwestern Communities

The METRO Blue Line Extension (LRT) will operate northwest from downtown Minneapolis through north Minneapolis, Golden Valley, Robbinsdale, Crystal and Brooklyn Park, drawing riders northwest of Brooklyn Park. The proposed alignment is primarily at-grade and will have up to 11 new stations in addition to Target Field Station and about 13 miles of double track. The line will interline with the METRO Blue Line and connect Minneapolis and the region's northwest suburbs with existing LRT on the METRO Green Line, future LRT on the METRO Green Line Extension, bus rapid transit on the METRO Red Line, the Northstar commuter rail line and local and express bus routes.

Latest News
Feds: Met Council can begin designing METRO Blue Line Extension

Route
[Click on the map below for more information](#)

Website: BlueLineExt.org

Email: BlueLineExt@metrotransit.org

Twitter: [@BlueLineExt](https://twitter.com/BlueLineExt)

