

SOUTHWEST

Green Line LRT Extension



Disadvantaged Business Enterprise and Workforce Advisory Committee

November 19, 2020



EDEN PRAIRIE | MINNETONKA | EDINA | HOPKINS | ST. LOUIS PARK | MINNEAPOLIS

Today's Topics

- Project Update
- DBE Reporting
- Workforce Reporting
- Building Strong Communities Update
- DBE Panel Discussion



SWLRT Project Update

EDEN PRAIRIE | MINNETONKA | EDINA | HOPKINS | ST. LOUIS PARK | MINNEAPOLIS



LRT Tunnel at TH 62, Minnetonka



Opus Station, Minnetonka

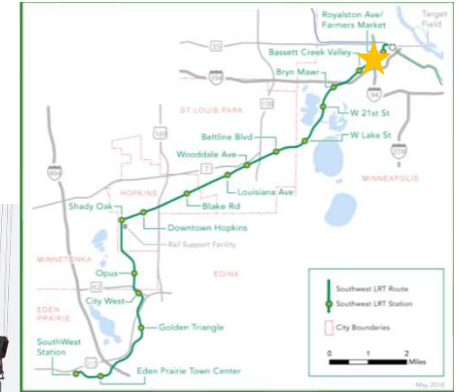


EDEN PRAIRIE | MINNETONKA | EDINA | HOPKINS | ST. LOUIS PARK | MINNEAPOLIS

Kenilworth Tunnel, Minneapolis



Completed Freight Rail Track Shift at Glenwood Ave. Bridge, Minneapolis



Franklin O & M Expansion



In Honor of George Gonzales Costilla, Jr.

Friend and colleague at MnDOT Office of Civil Rights



DBE Achievement Report

DBE Achievement as of Sept. 30, 2020

Contractor	Contract Description	Contract Amount	Contractor Billed to Date	DBE Billed to Date	DBE Date %	As of Date
LMJV 16% Goal	Civil	\$817,292,497	\$310,995,602	\$62,022,915	19.9%	8/31/20
APJV 12% Goal	Systems	\$194,410,859	\$31,472,854	\$1,247,720	4.0%	9/30/20
LS Black 15% Goal	Franklin O&M Exp.	\$38,650,000	\$4,657,766	\$256,206	5.5%	9/30/20
17% Goal	Closed Contracts	\$404,992	\$404,992	\$74,610	18.4%	
		Contract Amount	Billed to Date	\$ DBE to Date	% DBE to Date	
15% Goal		\$1,050,758,348	\$347,531,214	\$63,601,451	18.3%	

Lunda/CS McCrossan Joint Venture: Civil DBE Activities Update

LMJV Update on Change Orders

- Owner Change Orders approved thru October:
\$18,841,091
- DBE Change Order participation: **\$2,513,354**
 - DBE Change Order Participation: 13.3%
 - DBE Job To Date Participation: **20.07%**



Anticipated DBEs: One Month Look Ahead

- Airfresh Industries
 - Big G Tech Support
 - Boys Contracting
 - E&J Steel Erectors
 - HHA
 - IMO Consulting Group
 - Mac's Roll-Off Service Inc
 - On Call Pavement Sweeping
 - Public Solutions
 - Safety Signs
 - Standard Contracting Inc
 - Stonebrooke Fence Inc.
 - Zaczkowski Trucking Service
 - MBE Inc
 - Pete's Water and Sewer Inc.
 - Biffs Inc
 - CI Utilities LLC
 - M&J Trucking
 - Rock On Trucking
 - Sun Mechanical
 - E-Con
- Sanitary Facilities
 - Project Offices and Support
 - Pipe Supply
 - Steel Erection
 - Scheduling Consultant
 - Surveying
 - Dumpsters
 - Street Sweeping
 - Public Information
 - Maintenance of Traffic
 - Dewatering, Erosion Control
 - Fencing
 - Project Trucking
 - Project Trucking
 - Water and Sewer Installations
 - Sanitary Facilities
 - Electrical Testing
 - Project Trucking
 - Project Trucking
 - Stations – Mechanical Work
 - Stations – Concrete Pumping

LMJV DBE Feature

- **Hanson Custom Crushing Inc.**

- **Contract Value \$593,422**
- **\$94,497 Paid Thru 10/31/2020**
- **SWLRT Scope of Work**
 - Rock Crushing



- This is Hanson's first project with the Lunda/CS McCrossan joint venture. They have been involved with C.S. McCrossan in the past and are considered a highly competitive DBE who knows their work and continually produce quality products. Hanson's team likes working with the LMJV because they are organized and proactive.

Aldridge Parsons Joint Venture: Systems DBE Activities Update

Anticipated DBEs: One Month Look Ahead

- Big G Tech Support Project Offices and Support
- Generation Cable Traction Power, Overhead Catenary System (OCS), Signal Power Cable
- Gunnar Electric Traction Power (TP) Substations
- Meyer Contracting TP Substation Foundations
- Bald Eagle Erectors Reinforcing Steel
- MBE Trucking Trucking, & Aggregates
- Moltron Builders Construction Labor

APJV Systems Contract DBE Update

- Generation Cable – Initial Delivery of Traction Power, OCS, and Signal Power Cable to Warehouse
- Gunnar Electric – Submittals/Project Meetings
- Meyer Contracting - Initial Coordination Meetings

APJV Update on Change Orders

- Owner Change Orders approved thru 10/1
 - \$ 611,333
- DBE Change Order Participation:
 - Gunnar Electric \$187,356.00
 - DBE Change Order Participation: 30.6%
 - DBE Job To Date Participation: 4.0%

APJV DBE Feature

- Generation Cable Corp. – Traction Power, OCS, Signal Power Cable
 - DBE Commitment $\$3.6\text{M} \times 60\% = \2.16M



APJV DBE Feature



LS Black Constructors: Franklin O&M DBE Activities Update

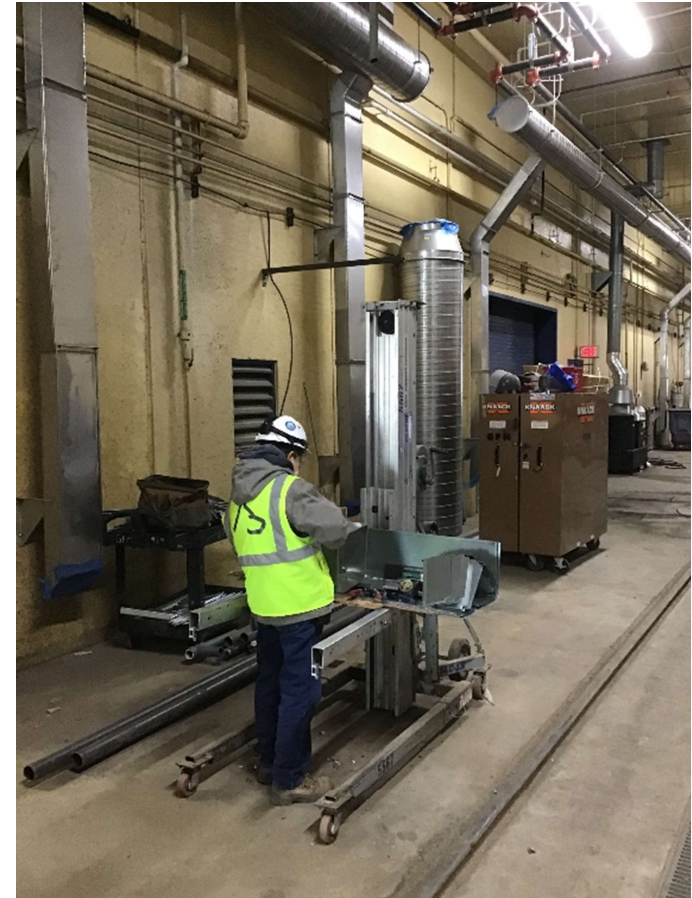
Franklin O&M Update on Change Orders

- Owner Change Orders approved thru 10/01: \$111,428
- DBE Change Order participation: \$26,475
 - DBE Change Order Participation: 23.76%

LS Black DBE Feature

Go Fetsch Mechanical

- Scope: Heating, Ventilation and Air Conditioning
- DBE Commitment: \$3,807,561
- Completed to date: \$331,150 (9%)



Franklin O&M Construction Activity

DBEs Active:

- Airfresh Industries
- Bald Eagle Erectors
- Go Fetsch Mechanical
- Dispatch Trucking
- E-con Placer
- Hydro-Vac
- Camacho Contractors
- Dziedzic Caulking
- Wissota Supply Company Inc.

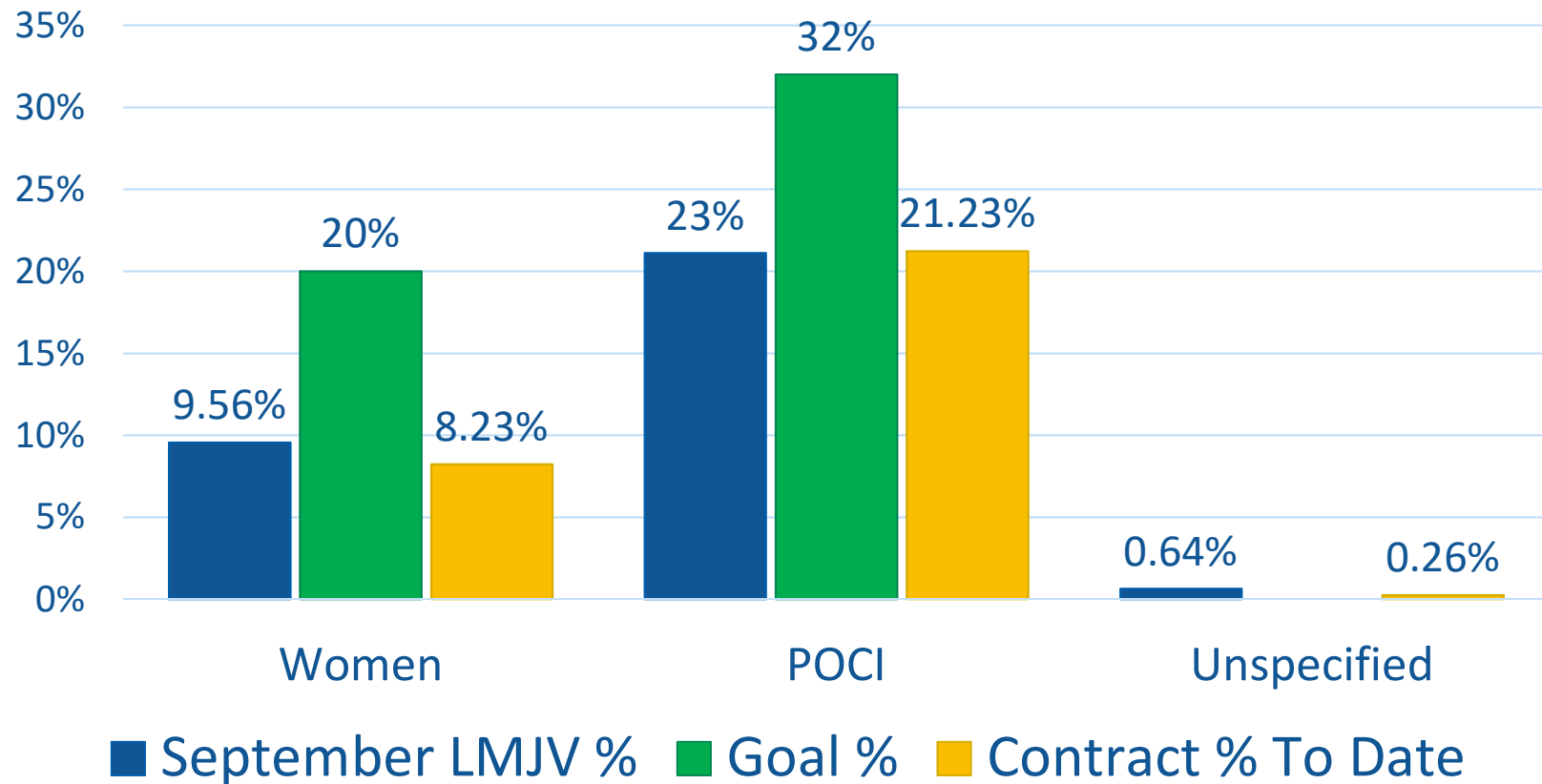
DBEs not currently active:

- Always Tile & Stone
- Crocus Hill Electric
- Minnesota Street Works
- Painting by Nakasone
- Rock On Trucks
- Total Insulation

Workforce Participation Reports

Civil Workforce Participation Percentage*

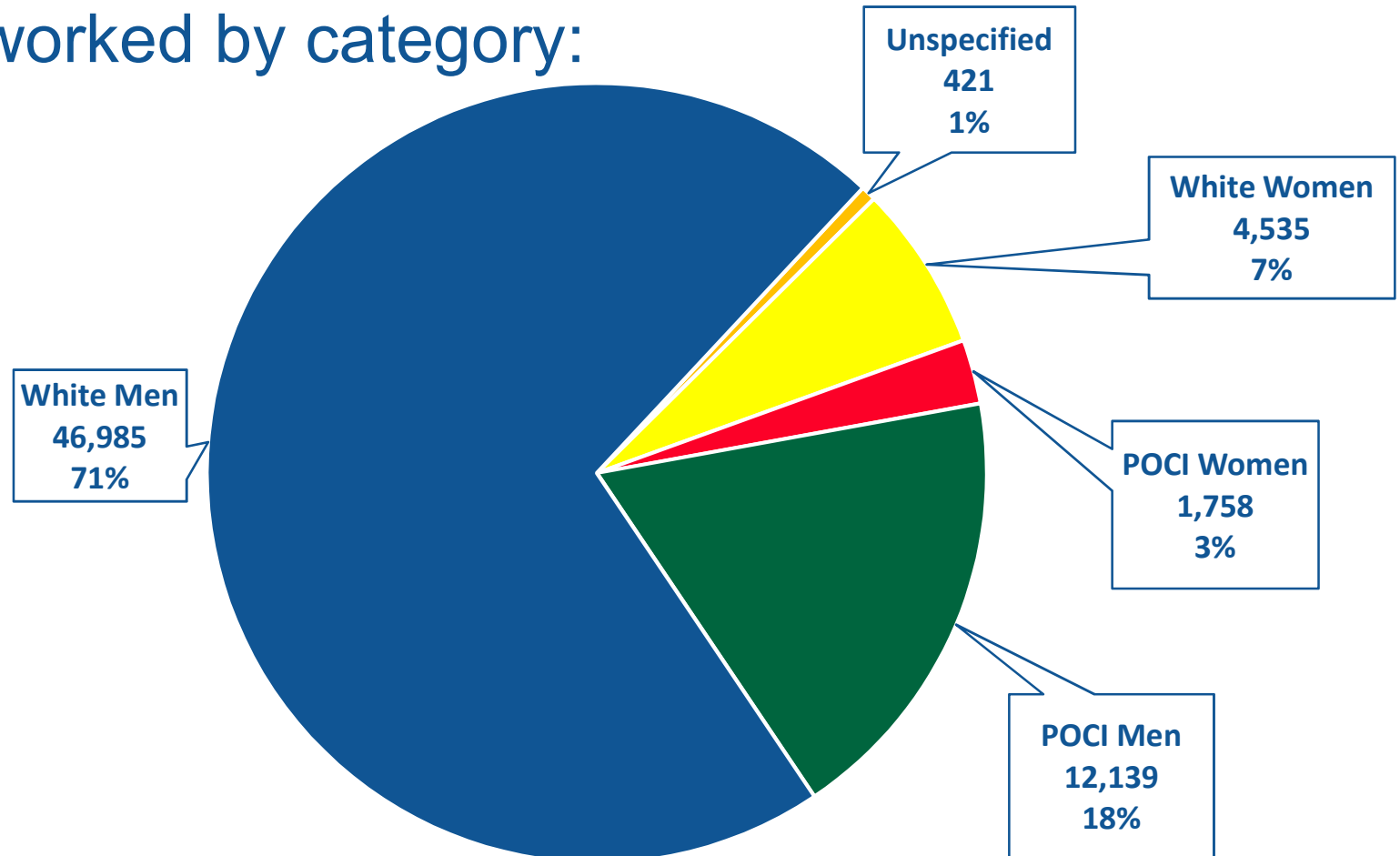
- September 2020: 65,839 hrs
- Civil Construction Total: 800,893 hrs



*Based on MDHR Workforce Report for September 2020
People of Color/Indigenous People (POCI)

Civil Workforce Participation*

- September 2020: 65,839 hrs
- Hours worked by category:



*Based on MDHR Workforce Report for September 2020

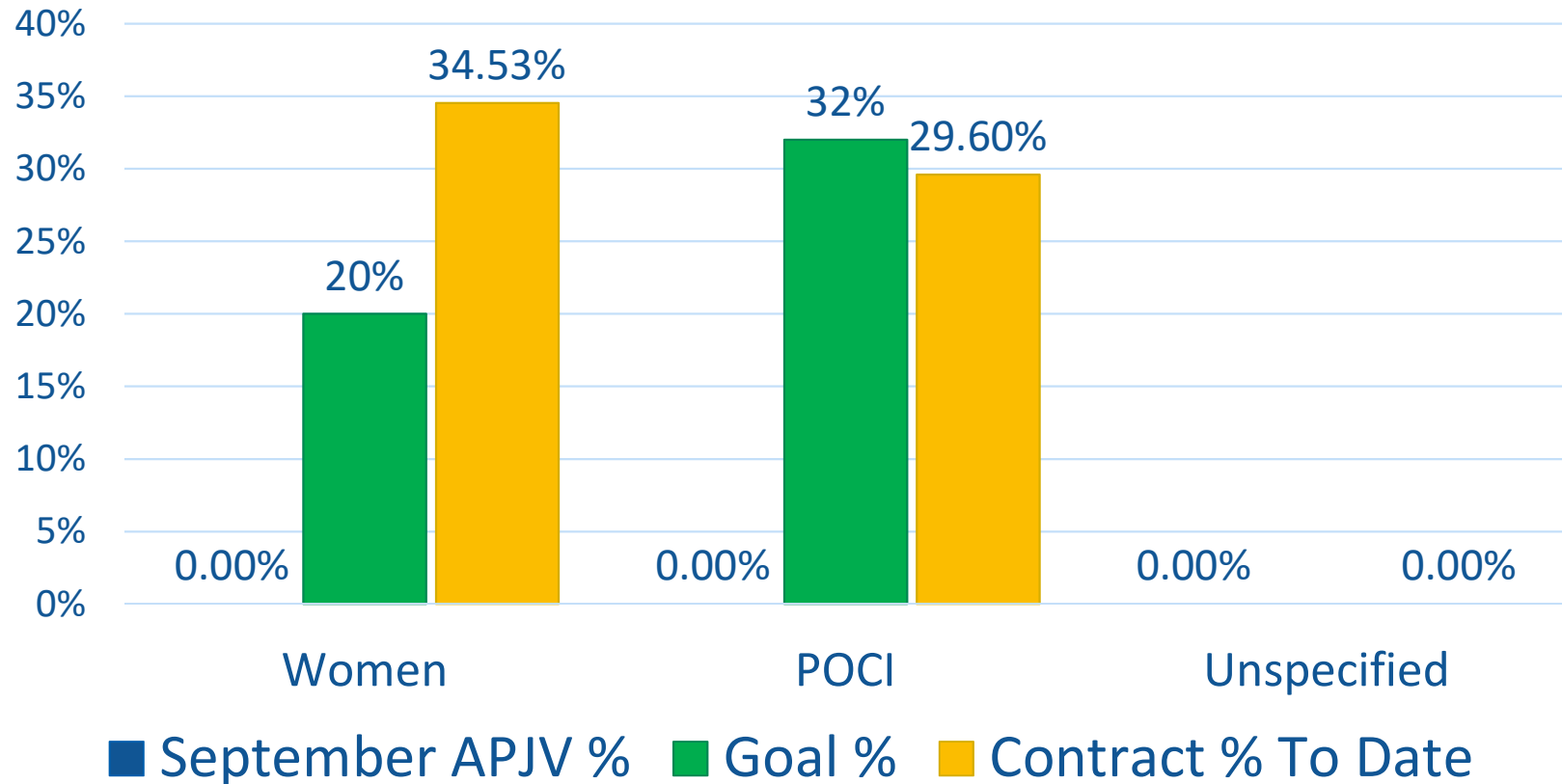
Civil Workforce Participation: Trucking

- Trucking participation on Project* being counted:
 - MBE: 15,898 hours
 - ZTS: 3,057 hours
 - Rock-On Trucks, Inc: 514 hours

* Based On Project To Date

Systems Workforce Participation Percentage*

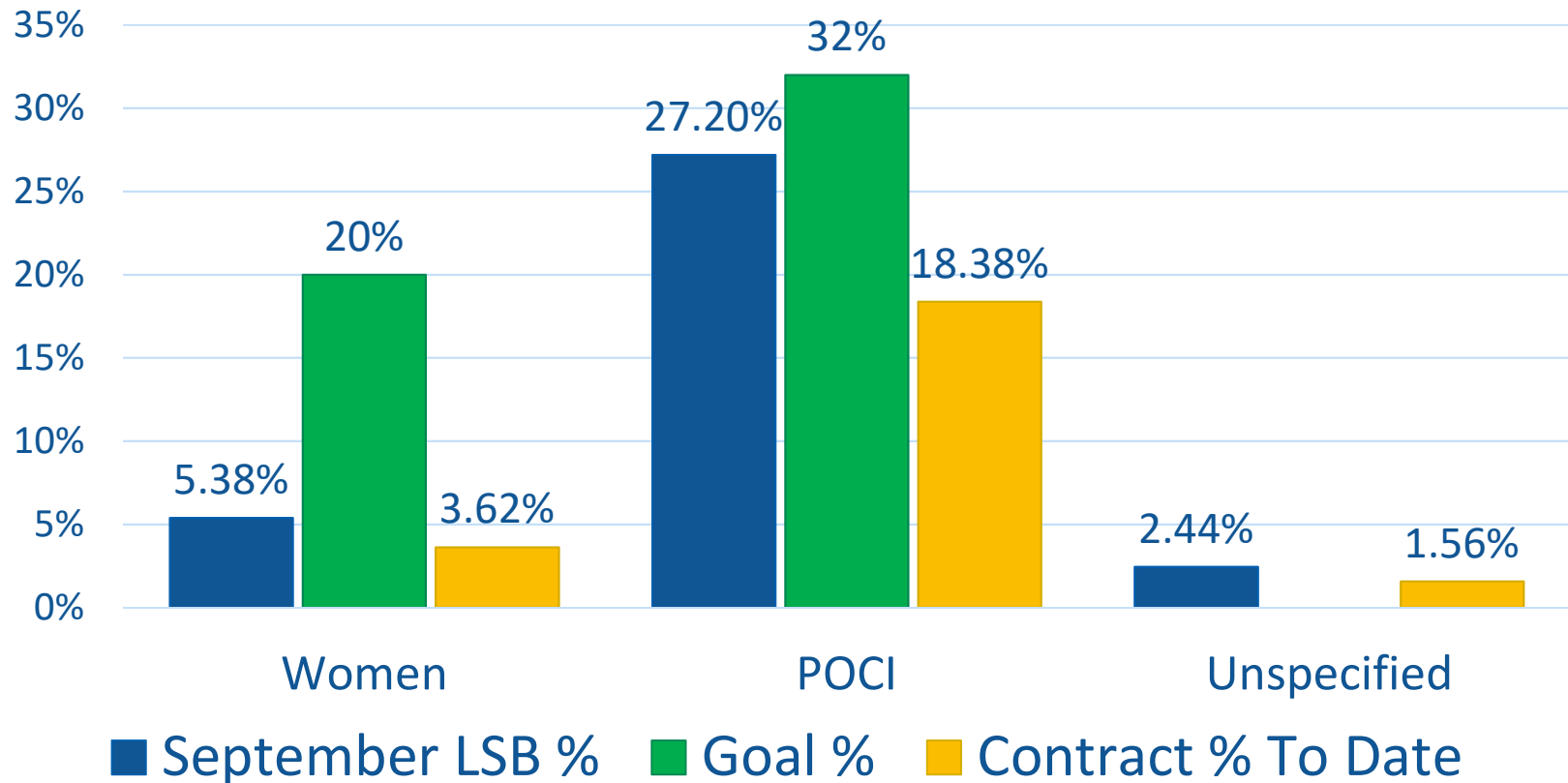
- September 2020: 0 hrs
- Systems Construction Total: 223 hrs



*Based on MDHR Workforce Report for September 2020
People of Color/Indigenous People (POCI)

Franklin O&M Workforce Participation Percentage*

- September 2020: 2173 hrs
- Franklin O&M Construction Total: 6082 hrs



*Based on MDHR Workforce Report for September 2020
People of Color/Indigenous (POCI)

Lunda/CS McCrossan Joint Venture: Civil Workforce Activities Update

LMJV Workforce Activities - October 2020

- Started meeting 1on1 with subcontractors to review workforce and good faith efforts
- Virtual introduction meeting with Goodwill/Easter Seals
- Virtual reconnect meeting with Marvin Smith, NAMC
- Participated in mock interviews with Goodwill/Easter Seals.
- Started work on creating a potential Lunda mentor program for one of the Goodwill/Easter Seals candidates – this program could then be utilized for others.
- Virtual meeting with Rick Martagon, MNDLI Apprenticeship Dept
- Virtual meeting with Barb Lau, AWC
- Phone intro meetings with various Unions
- Work on field anti-harassment training documents

3 Total New Hires for LMJV: Oct 2020*

- White Male: 3
- White Female: 0
- POCI Male: 0
- POCI Female: 0

* New hires are from LMJV, Lunda and CS McCrossan only

Aldridge Parsons Joint Venture: Systems Workforce Activities Update

Systems Contract Workforce

- Plan to meet the workforce goal
 - APJV Craft Labor will not begin until April 2021
 - Had meetings with Local 292, Local 160 & Local 49
 - Work to identify opportunities to increase POCI and women participation on the project through workforce retention
 - Had meeting with Ramsey County Workforce
 - Met with Building Strong Communities Cohort in October
 - Participating in Mock Interviews at Summit Academy, Nov 12th – Delayed due to Covid outbreak
 - MDHR Update Meeting – Oct 21st
 - Host Kick-Off meeting with Meyer Contracting - November

LS Black Constructors: Franklin O&M Workforce Activities Update

Franklin O&M Contract Workforce

- Plan to meet the workforce goal
 - Scheduled monthly GFE meetings with Joseph Serr at MDHR
 - Next Meeting scheduled November 18th to review previous workforce reports, GFE and upcoming activities.
 - Working with major Subcontractor partners to identify opportunities to increase POCI and Woman participation
 - Scheduling meetings with North Central States Regional Council of Carpenters and Metropolitan Local 563 to identify POCI hiring opportunities

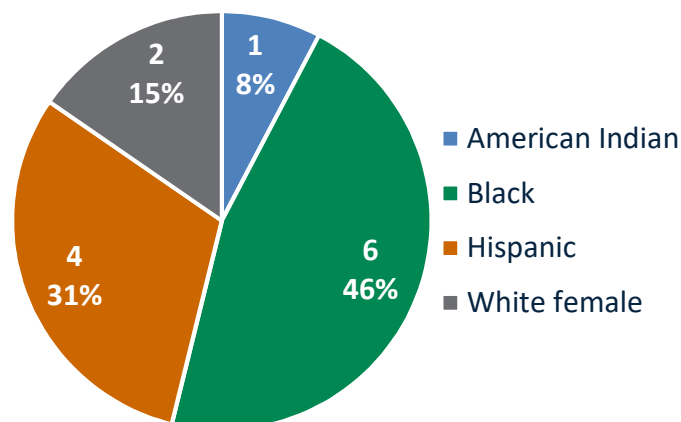
Building Strong Communities November Update

Building Strong Communities: November Update

<u>Hired Per Trade - YTD</u>		<u>Gender</u>		<u>Contractors</u>
		Male	Female	
Cement Masons #633	1	0	1	LS Black
Operating Engineers #49	2	1	1	EJM Pipe Services, Inc., Michels
Iron Workers #512	3	2	1	Architectural Wall Systems (AWS), E & J Rebar, Inc., Red Cedar Steel Erectors
Laborers #563	3	1	2	Lunda/McCrossan JV, Knutson, Ti-Zack Concrete, Inc.
Pipefitters #539 - Helper	2	1	1	Gilbert Mechanical
Sheet Metal Workers #10	1	0	1	S.R. Mechanical, Inc.
Interior Systems Local #68	1	0	1	Acoustics Associates, Inc.

Apprentice **13** Male 5 Female 8

Apprentice - Ethnicity



Building Strong Communities: November Update

- Planning has begun on next cohort
- Completed lessons learned exercises
- Significant program changes
- BSC Cohort 2 program overview - December 2021

DBE Panel Discussion

DBE Panel Discussion

Moderator:

- Gilbert Odonkor
Hennepin County/Formal DBE

DBE Panel:

- Leroy Meyer – Pete's Water and Sewer
- Laura Karow – Gunnar Electric
- Clifton Boyd – B & L Supply
- Ismael Martinez – IMO Consulting

Closing

- Next Meeting Date: December 17, 2020
 - Agenda topics
 - Actions items for the next meeting
 - Adjourn

Stay Updated!

Online: SWLRT.ORG

Twitter: [@SouthwestLRT](https://twitter.com/SouthwestLRT)

Facebook: [@MetropolitanCouncil](https://facebook.com/MetropolitanCouncil)

Instagram: [@southwest_lrt](https://instagram.com/southwest_lrt)

