

SOUTHWEST

Green Line LRT Extension



SWLRT Business Advisory Committee

January 9, 2013



EDEN PRAIRIE | MINNETONKA | EDINA | HOPKINS | ST. LOUIS PARK | MINNEAPOLIS



Today's Topics

- 2013 Project Look Ahead
- Preliminary Engineering Consultant Contract Awards
- Peer Review Consultant Contract Request for Proposal (RFP)
- Environmental Program Update
- Topics of Interest Survey
- 2013 BAC Meeting Schedule
- Definition of BAC Success
- Member and Committee Reports
- Public Forum



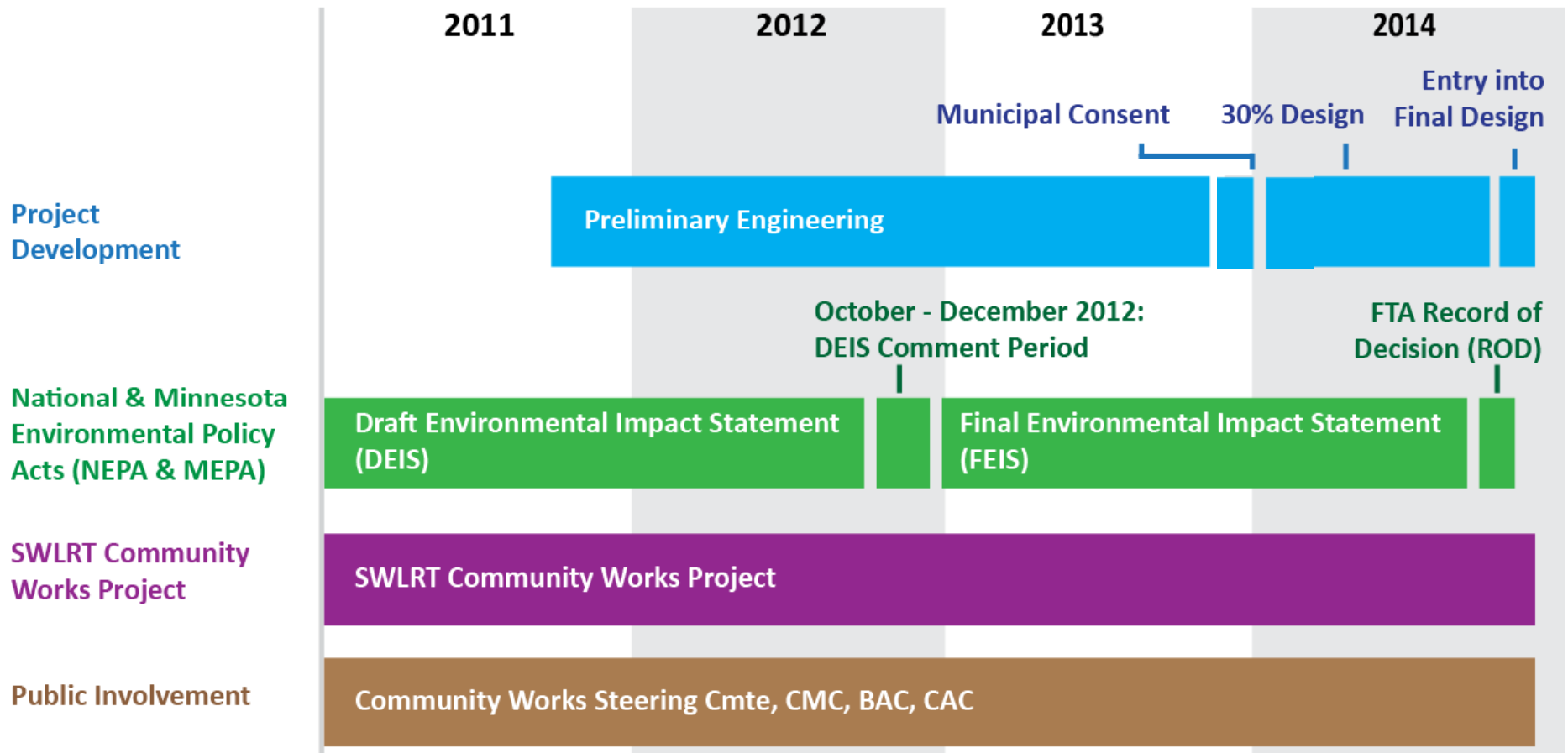
2013 Project Look Ahead



EDEN PRAIRIE | MINNETONKA | EDINA | HOPKINS | ST. LOUIS PARK | MINNEAPOLIS



Project Development Overview





2013 Key Issues/Decisions

- Freight Rail Co-Location and Relocation
- Eden Prairie Alignment Alternatives
- Operations and Maintenance Facility



A Look Ahead: Project Wide

Key Tasks

- Revise New Starts Application
- Update Management Plans
- Update Ridership and Financial Forecasts

Key Milestones

- Q3 2013: Submit New Starts Update for FFY 2015 to FTA
- Q2 2014: Request Entry into Final Design
- Q4 2014: Complete Preliminary Engineering / Enter Final Design



SOUTHWEST

Green Line LRT Extension

Preliminary Engineering Consultants Contract Awards

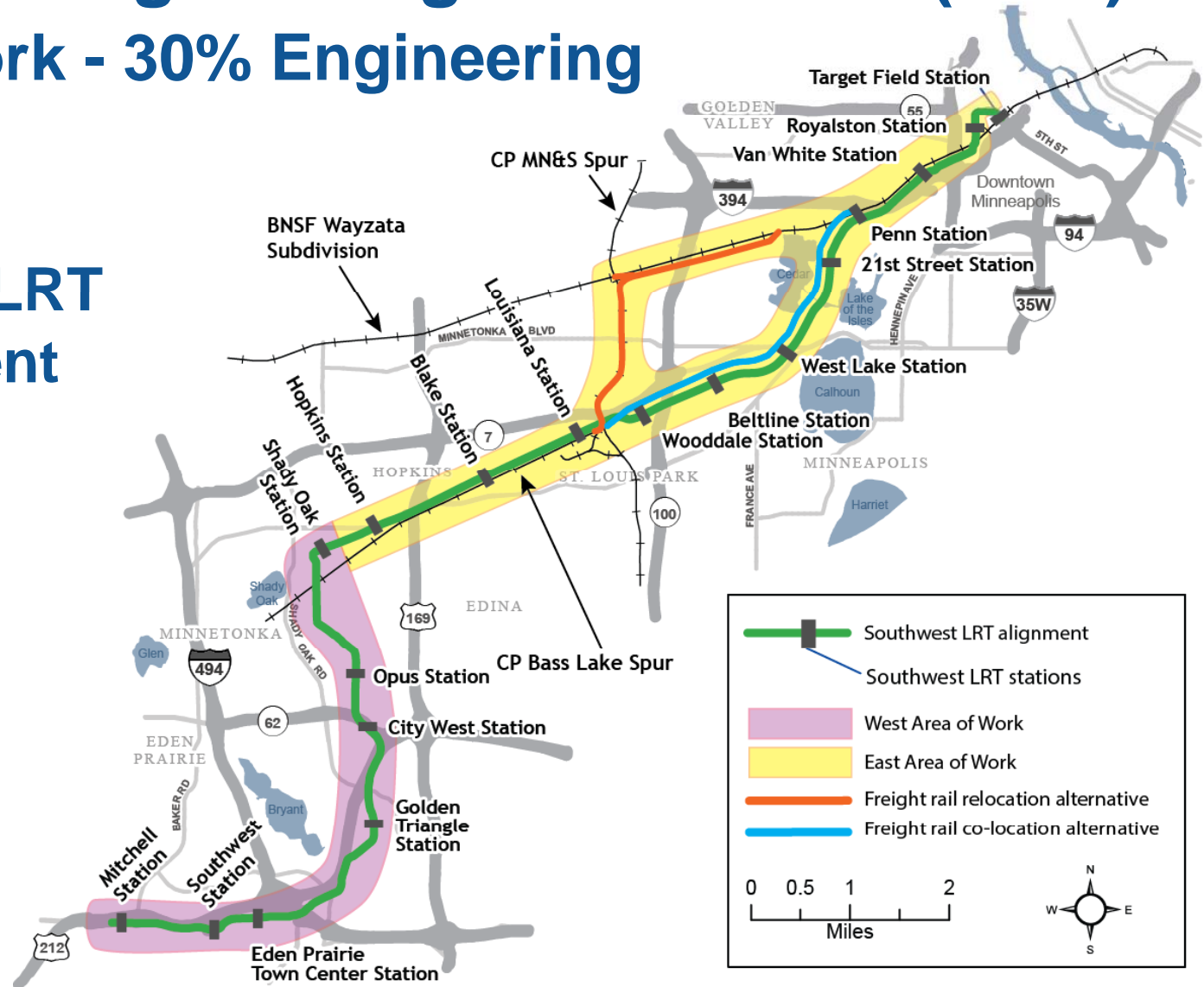


EDEN PRAIRIE | MINNETONKA | EDINA | HOPKINS | ST. LOUIS PARK | MINNEAPOLIS



Preliminary Engineering Consultants (PEC) Scope of Work - 30% Engineering

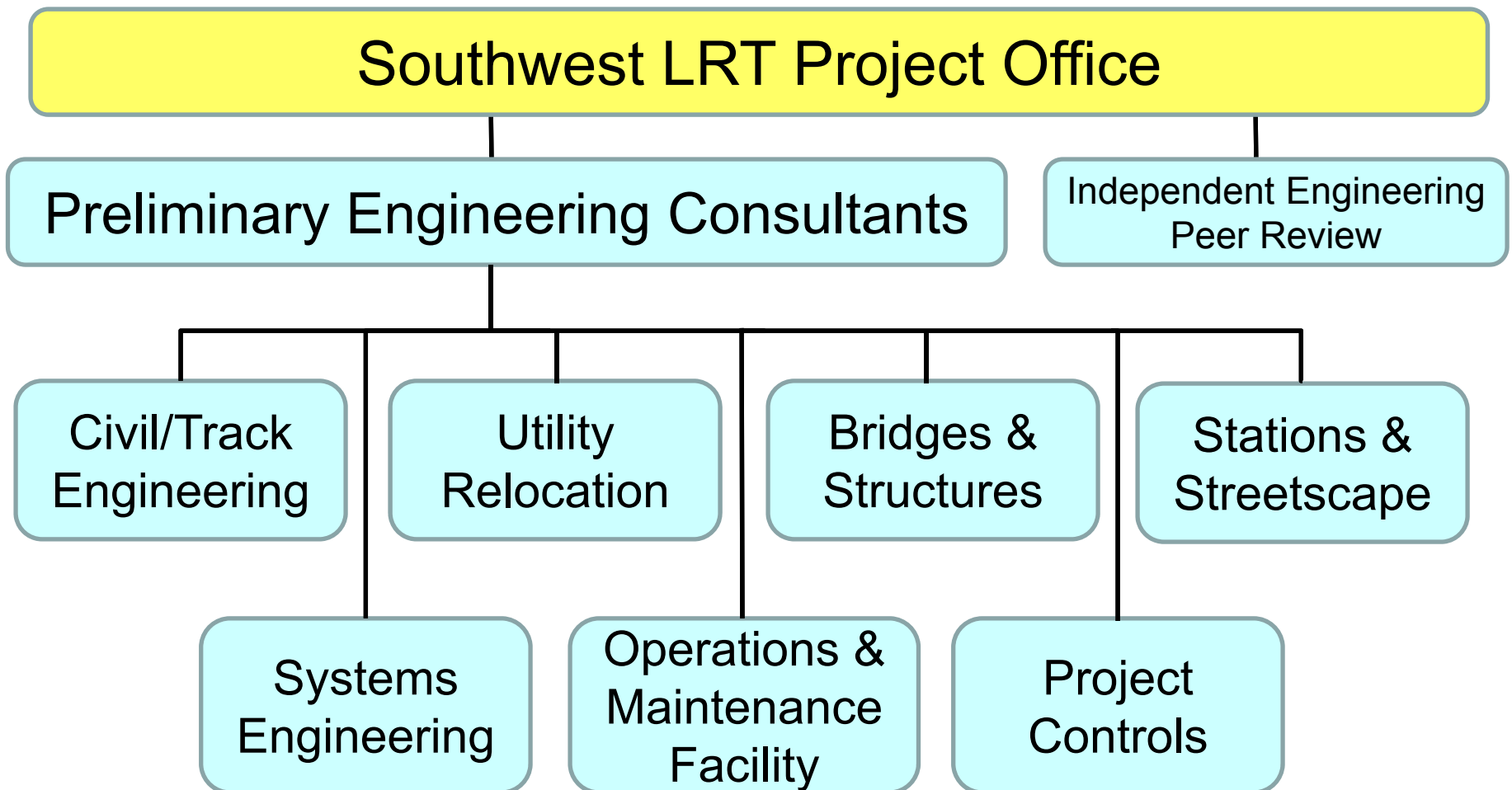
Full SWLRT Alignment





Preliminary Engineering Consultants

Scope of Work - 30% Engineering





PEC Procurement Process: Evaluation Panels

- Consist of six members for each procurement
 - Southwest LRT Project Office (2)
 - Light Rail Operations
 - MnDOT
 - Hennepin County
 - Community Works
- Identify most qualified proposer
- Provide recommendation to the Council



PEC Procurement Process: Technical Advisory Groups

- Consist of six members for each procurement
- Provide technical review and input

PEC West

- SWLRT Project Office
- MnDOT
- Eden Prairie
- Hopkins
- Minnetonka
- Metropolitan Transportation Services

PEC East

- SWLRT Project Office
- MnDOT
- Hopkins
- Minneapolis
- St. Louis Park
- Three Rivers Park District



December 19, 2012 Council PEC Actions:

- Awarded PEC West contract to AECOM
 - Contract amount not-to-exceed \$16,787,963
 - Proposal achieves 17% DBE goal
- Awarded PEC East contract to Kimley-Horn and Associates
 - Contract amount not-to-exceed \$16,788,349
 - Proposal achieves 17% DBE goal



Preliminary Engineering Activities

- Location of LRT track
- Location of freight rail track
- Location/layout of stations and station access
- Location/layout of park and ride facilities
- Location of pedestrian/bike trails impacted by Project
- Layout of roadway features:
 - Turn lanes, lane widths, traffic signals
- Location/layout of Operations & Maintenance Facility (OMF)
- Identification of LRT systems elements



A Look Ahead: Engineering & Design

Key Tasks

- Conduct Geotechnical and Field Survey Work
- Resolve Design Challenges and Technical Issues
- Prepare Municipal Consent Plans
- Prepare 30% Design Plans and Specs

Key Milestones

- Q3 2013: Submit Municipal Consent Plans for Agency Review
- Q4 2013: Complete Municipal Consent Approval Process
- Q1 2014: Finalize 30% Design Plans and Specs



SOUTHWEST

Green Line LRT Extension

Peer Review Consultant Contract Request for Proposal (RFP)



EDEN PRAIRIE | MINNETONKA | EDINA | HOPKINS | ST. LOUIS PARK | MINNEAPOLIS



Peer Review Consultant (PRC) Procurement Schedule

Major Milestones	Dates
Advertise RFP	12/14/12
Hold pre-proposal conference	1/23/2013
Receive proposals	3/14/13
Interview proposers	April 2013
Conduct proposal evaluations/negotiation	April 2013
Award & sign contract	May 2013



PRC Scope of Work

- Complete engineering reviews on plans, calculations and specifications
 - 30% Design
 - 60% Design
 - 90% Design
- Conduct spot reviews on engineering work products



PRC Independent Reviews

- Activities managed by the SPO Deputy Project Director
- Precluded from participating on any other SWLRT consulting contracts
- SPO will make final determination on PRC reviews and recommendations



Environmental Program Update



EDEN PRAIRIE | MINNETONKA | EDINA | HOPKINS | ST. LOUIS PARK | MINNEAPOLIS



Draft Environmental Impact Statement (DEIS) Schedule

<u>Date</u>	<u>Action</u>
Oct 12, 2012	EPA published NOA in Federal Register
Nov 13, 2012	Public Hearing – Hennepin County Government Center, A-2400
Nov 14, 2012	Public Hearing – St. Louis Park City Hall
Nov 29, 2012	Public Hearing – Eden Prairie City Hall
Dec 7, 2012	Comment period extension in Federal Register
Dec 31, 2012	DEIS public comment period closed



DEIS Public Hearing Dates and Locations

11/13/12, Hennepin County Government Center, A-2400

4:00 to 5:00 PM, public open house (Public Service Level)

4:30 PM, Formal Public Hearing

11/14/12, St. Louis Park City Hall, 5005 Minnetonka Blvd

5:00 to 6:00 PM, public open house

6:00 PM, Formal Public Hearing

11/29/12, Eden Prairie City Hall, 8080 Mitchell Road

5:00 to 6:00 PM, public open house

6:00 PM, Formal Public Hearing



DEIS Summary of Comments

- 750+ comments received
 - Verbal comments received during public hearings:
 - Minneapolis – 22 comments
 - St. Louis Park – 52 comments
 - Eden Prairie – 29 comments

- Examples of themes
 - Freight rail
 - Impacts to businesses
 - Impacts to traffic
 - Impacts to trails



DEIS Public Comment Process

- Hennepin County collected comments
- Upon the close of the comment period, Hennepin County to turn over all comments received to the Council
- SPO is using project management software to capture comments and track analysis and responses during Final EIS (FEIS) development
- FTA and the Council will consider all comments submitted and provide responses to substantive comments in the FEIS



Responsible Government Unit Authority

- Responsible Government Unit (RGU) authority transferred from HCRRA to Council on December 31, 2012
 - Required under Minnesota Environmental Policy Act (MEPA)
 - Assigned to the government unit with greatest authority over project
 - Council responsible for environmental process, including development of FEIS
 - Council and HCRRA approved transfer effective as of close of comment period
 - Notice published in Environmental Quality Board (EQB) Monitor on January 7, 2013



Final Environmental Impact Statement (FEIS) Consultant - Procurement Schedule

Major Milestones	Dates
Advertise RFP	Jan 4, 2013
Proposals Due	Feb 7, 2013
Interview proposers	Feb 2013
Proposal evaluations / negotiations	Mar/Apr 2013
Contract Award / Notice to Proceed	June 2013



FEIS Consultant Scope of Work

- Prepare FEIS
- Support Agency Coordination Activities
- Support Public Involvement Activities
- Support Environmental Permitting Activities



A Look Ahead: Environmental

Key Tasks

- Prepare FEIS
- Conduct Phase I Environmental Site Assessment
- Conduct Phase II Archaeological Survey
- Conduct Architectural/Historic Structures Survey

Key Milestones

- Q2 2013: FEIS Consultant Hired
- Q4 2013: Complete Phase I Environmental Site Assessment
- Q4 2013: Complete Phase II Archaeological Survey
- Q4 2013: Complete Architectural / Historic Structures Survey
- Q3 2014: FTA issues Record of Decision (ROD)



SOUTHWEST

Green Line LRT Extension

2013 Meeting Schedule

See Handout



EDEN PRAIRIE | MINNETONKA | EDINA | HOPKINS | ST. LOUIS PARK | MINNEAPOLIS



Topics of Interest Survey Results

1. Station location/platform connections
2. Land Use
3. Tied: Business outreach, parking, station and platform designs, traffic impacts
4. Tied: Lessons learned from Hiawatha and Central, PE, trails/parks/bike facility impacts, transit-oriented-development



Definition of BAC Success

suc-cess /sək'ses/ noun

- the attainment of popularity or profit
- **the accomplishment of an aim or purpose**
- synonyms: prosperity - luck - achievement - triumph – speed

Coming together is a beginning;
keeping together is progress;
working together is success.

--Henry Ford



More Information

Online:

www.SWLRT.org

Email:

SWLRT@metrotransit.org

