



Corridor Management Committee

November 10, 2016



Today's Topics

- Welcome/Approval of Minutes
- Chair's Update
- Station Design
 - Brooklyn Park
 - Crystal
 - Robbinsdale
 - Golden Valley
 - Minneapolis
- Community Open Houses



Chair's Update



Station Design



Station Design

- LRT stations provide access to the light rail system
- LRT stations provide **form** in terms of shelters, and **function** in terms of ticket vending machines, heaters, train information
- LRT stations and access are owned and maintained by Metro Transit
- LRT stations are one element of the larger transit system



Design Framework

- Respond to **lessons learned**
- Provide **safe and accessible** facilities
- Enhance **customer experience**
- Develop design **consistency**
 - Customer wayfinding
 - Constructability / cost
 - Maintenance
- Respond to **character & context** of each site
- Incorporate **Section 106 / Secretary of Interior** standards

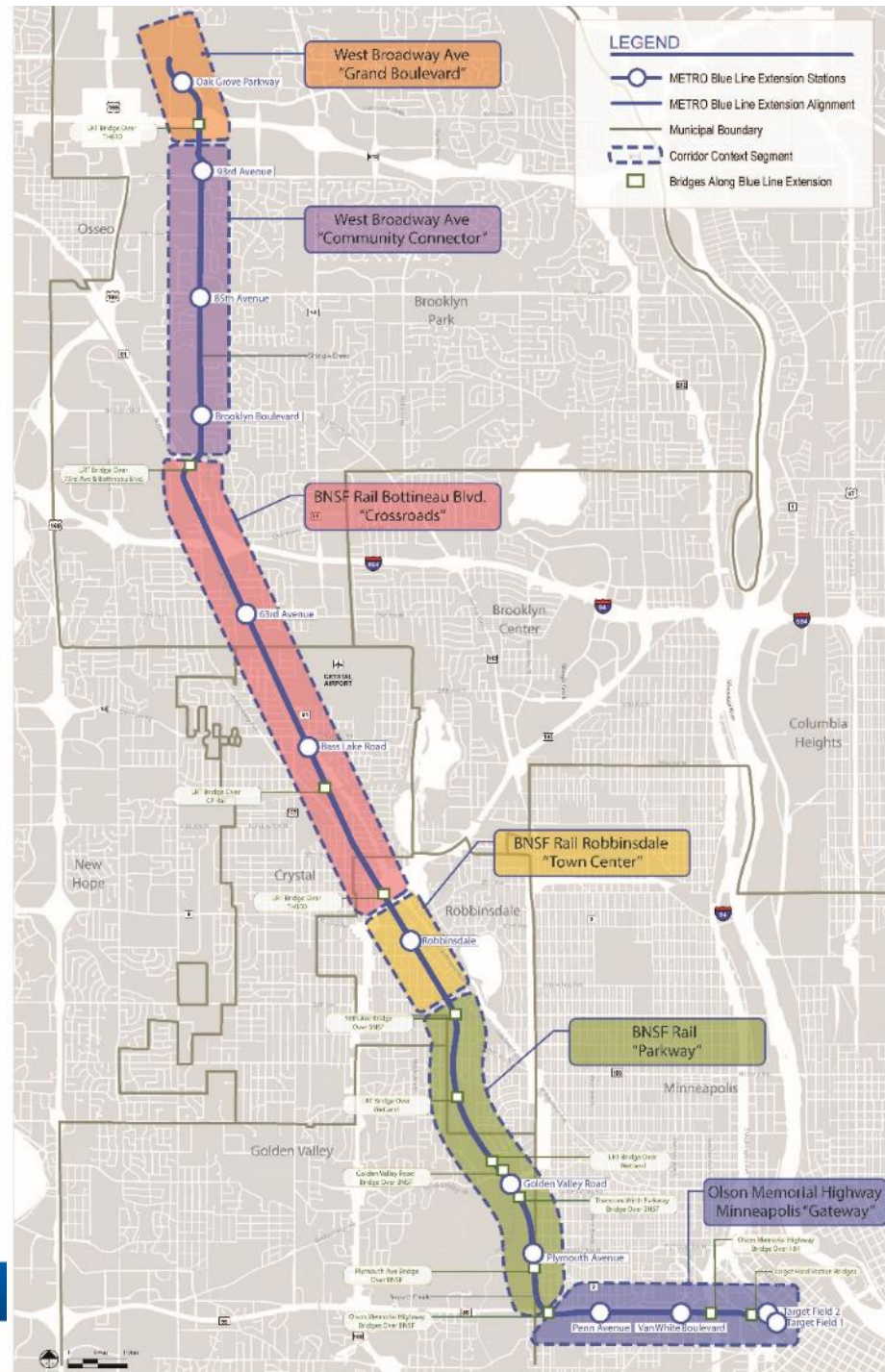


Design Framework

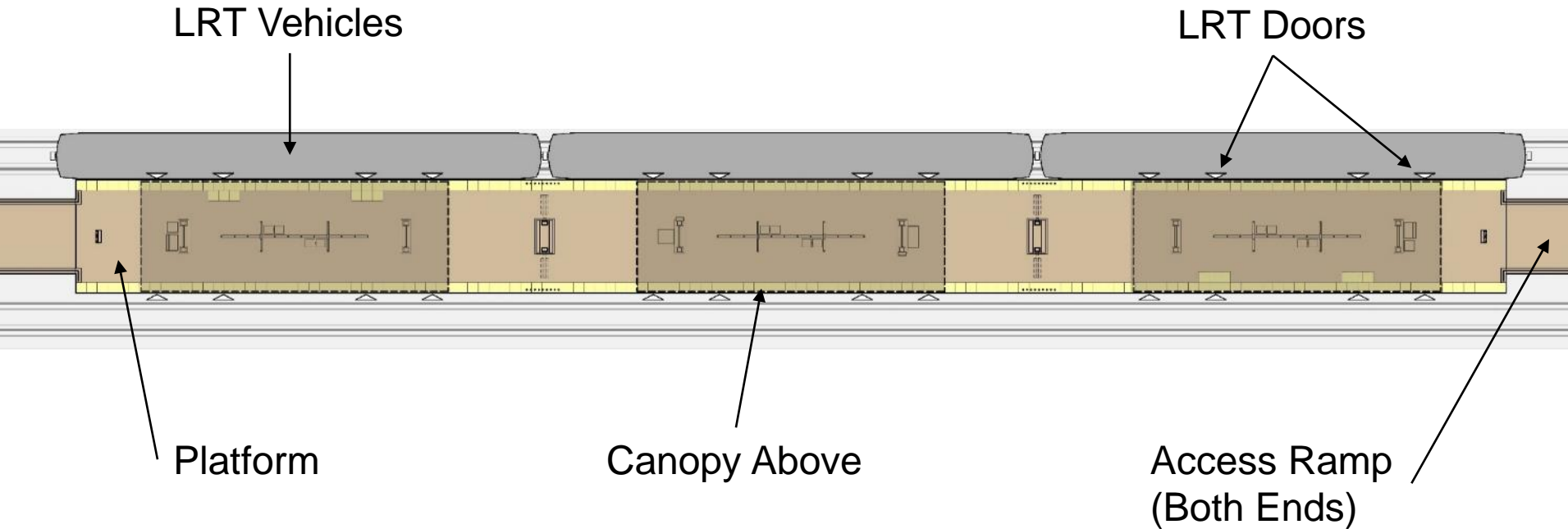
- BPO areas of variability to create identity for each station through use of color, materials, massing
- Metro Transit encourages partnerships with stakeholders & community members to facilitate addition of artwork along BLRT corridor



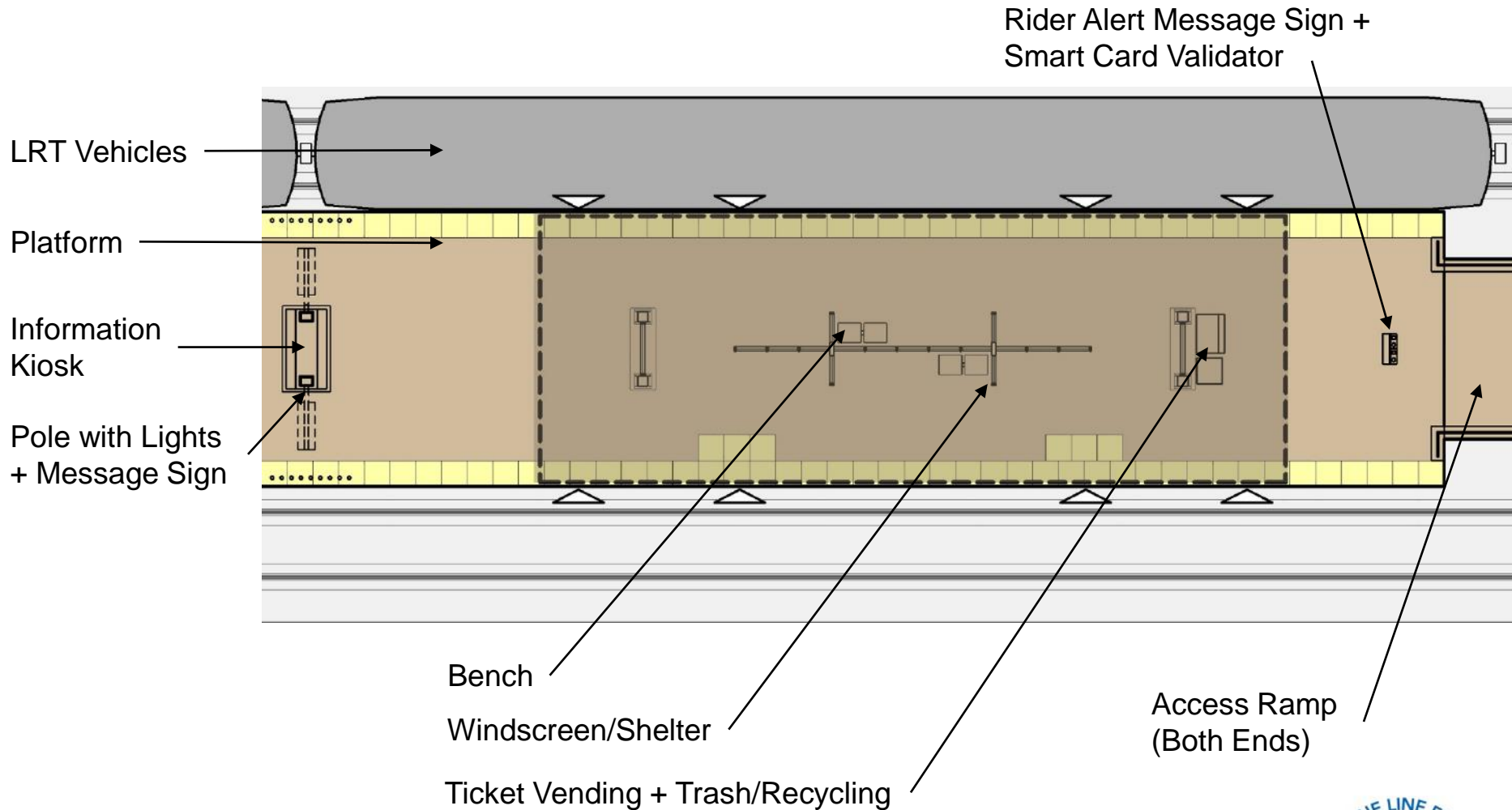
Corridor Framework



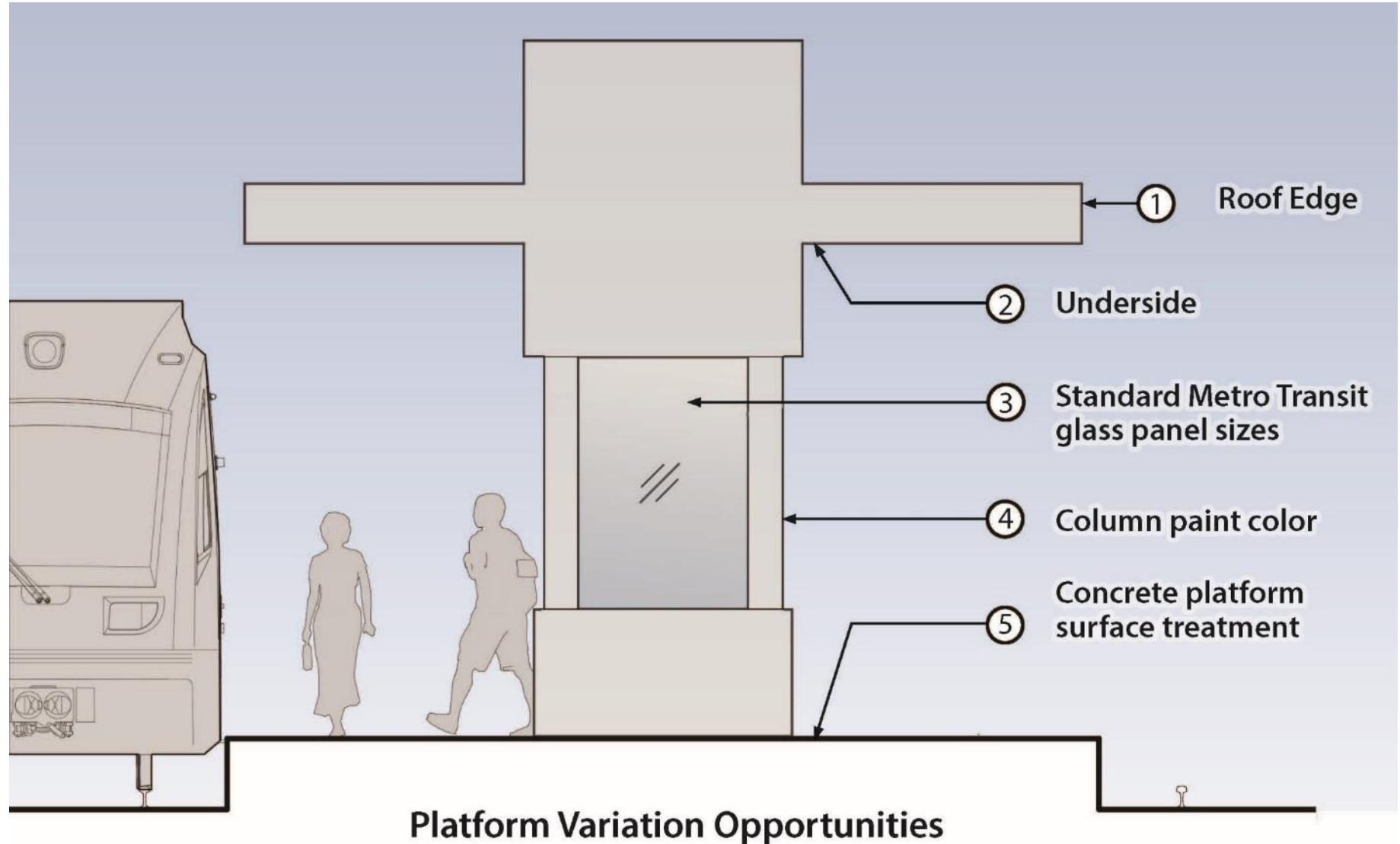
Platform Design



Platform Design



Opportunities for Variability



Draft: Work in Process

Oak Grove Parkway Station



Aerial View of Oak Grove Pkwy Station Site



DRAFT-WORK IN PROCESS

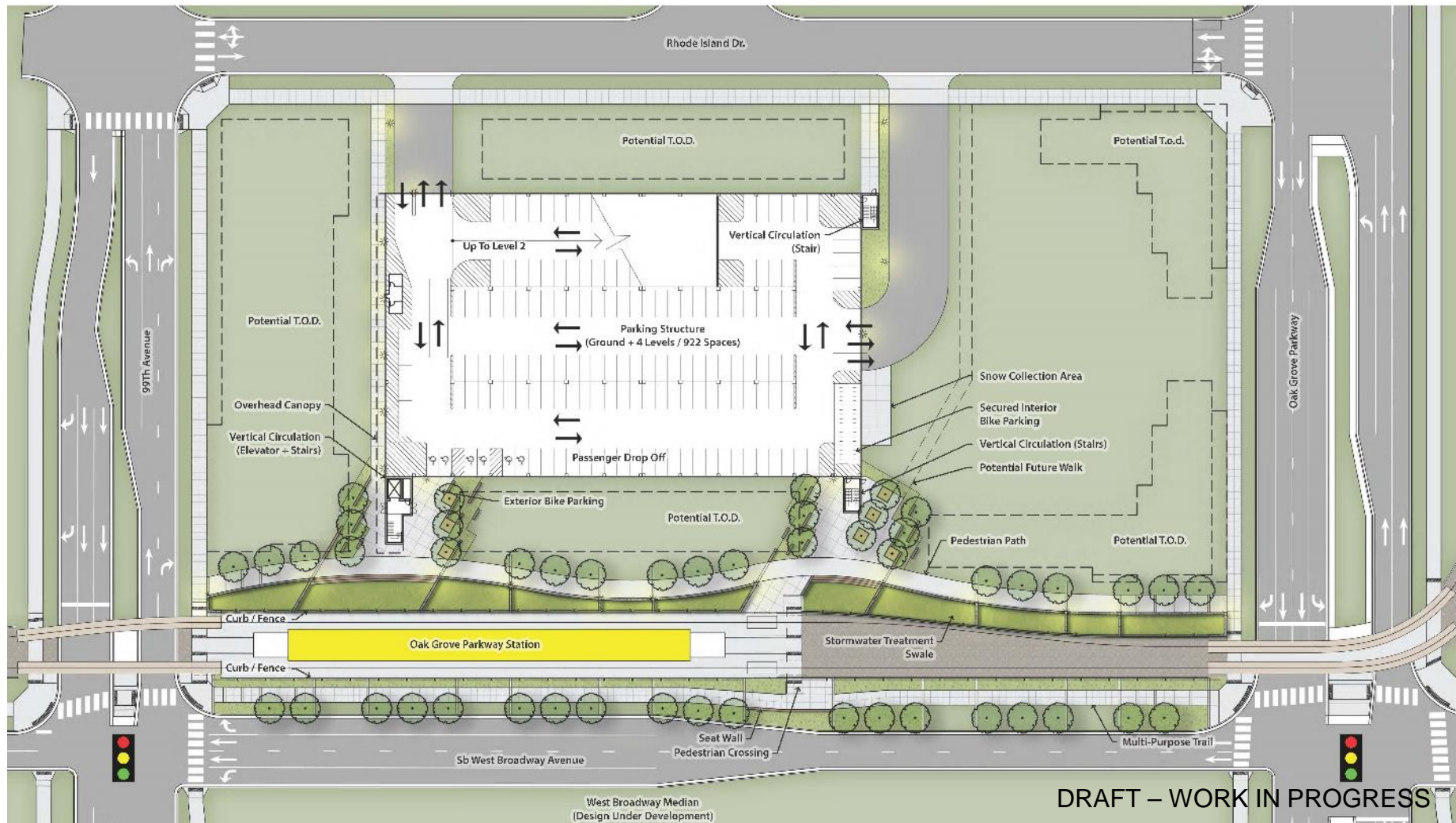




Oak Grove Pkwy Station Context & Character Words



Station Plan Concept



Note: The streetscape design for West Broadway Ave. is being developed in coordination with the Visioning Team with input from the City, County, and Community. Improvements shown on the station site plan do not imply that the LRT Project will provide them. Final determination of funding sources for the streetscape features is yet to be determined.





DRAFT – WORK IN PROGRESS

Birdseye view of Oak Grove Pkwy Station





DRAFT - WORK IN PROGRESS

View from sidewalk to LRT platform & ramp





DRAFT – WORK IN PROGRESS

View from ramp to LRT platform with TOD



93rd Avenue Station



Aerial View of 93rd Ave Station Site



DRAFT-WORK IN PROCESS

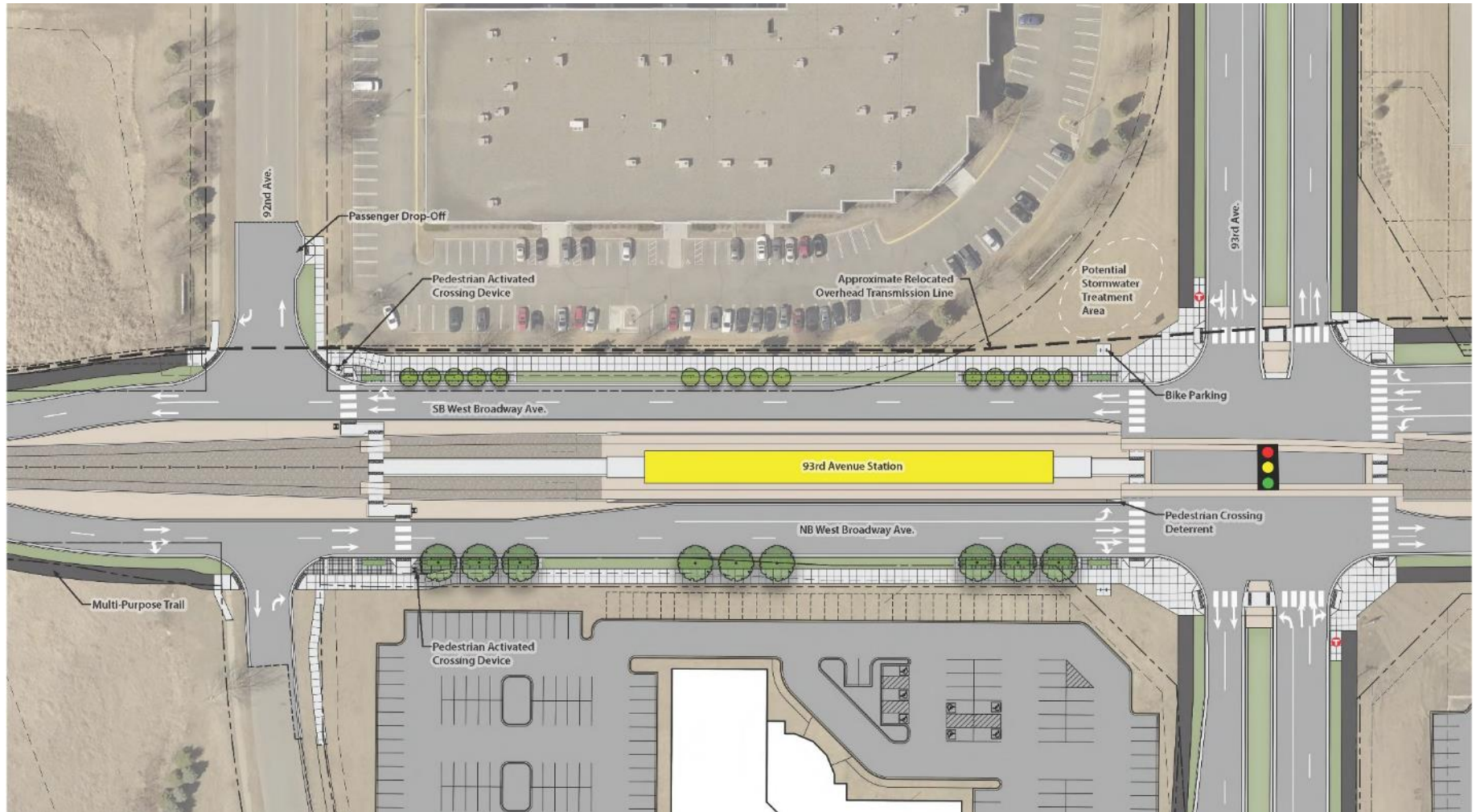




93rd Avenue Station Context & Character Words



Station Plan Concept



Note: The streetscape design for West Broadway Ave. is being developed in coordination with the Visioning Team with input from the City, County, and Community. Improvements shown on the station site plan do not imply that the LRT Project will provide them. Final determination of funding sources for the streetscape features is yet to be determined.



DRAFT – WORK IN PROGRESS

View from West Broadway Ave looking Southeast





DRAFT - WORK IN PROGRESS

View from platform entry looking North



85th Avenue Station



Aerial View of 85th Ave Station Site



DRAFT-WORK IN PROCESS





PRIDE FOR INSTITUTIONS

ENTRANCE TO THE FUTURE
CIVIC SPACE
LOSS OF TREES
EDGES
CAMPUS
GENERATIONAL USE
CARPOOLS
LIBRARY
MODERN DESIGN
PEDESTRIAN FACILITIES
PARKING
BUS STOPS
PLAZA
CORRIDOR
TRANSITION FROM PUBLIC TO PRIVATE
RESIDENTIAL UNEASINESS
DESTINATION
ARTS AND EDUCATION
STUDENTS
STATION BLENDS WITH MODERN ARCHITECTURE

CONTEXT & CHARACTER WORKSHOPS

PRIDE FOR INSTITUTIONS

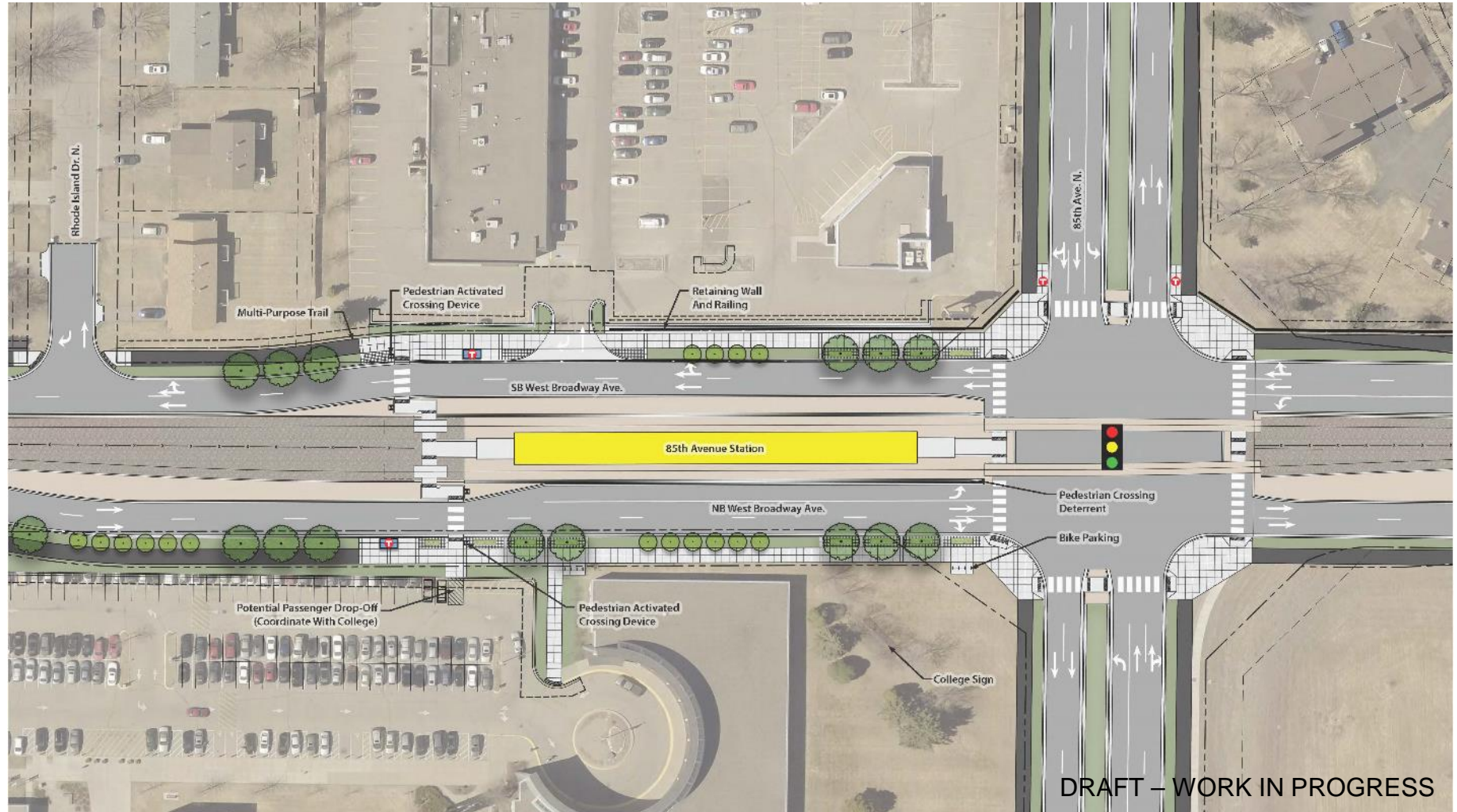
ENTRANCE TO THE FUTURE
CIVIC SPACE
LOSS OF TREES
EDGES
CAMPUS
GENERATIONAL USE
CARPOOLS
LIBRARY
MODERN DESIGN
PEDESTRIAN FACILITIES
PARKING
BUS STOPS
PLAZA
CORRIDOR
TRANSITION FROM PUBLIC TO PRIVATE
RESIDENTIAL UNEASINESS
DESTINATION
ARTS AND EDUCATION
STUDENTS
STATION BLENDS WITH MODERN ARCHITECTURE

STATION DESIGN CONCEPTS

85th Avenue Station Context & Character Words



Station Plan Concept



Note: The streetscape design for West Broadway Ave. is being developed in coordination with the Visioning Team with input from the City, County, and Community. Improvements shown on the station site plan do not imply that the LRT Project will provide them. Final determination of funding sources for the streetscape features is yet to be determined.



View from West Broadway Ave looking Southeast





DRAFT - WORK IN PROGRESS

View from platform entry looking North



Brooklyn Boulevard Station



Aerial View of Brooklyn Blvd Station Site



DRAFT-WORK IN PROCESS





COMMERCIAL HUB

DESTINATION
TRANSIT CONNECTIONS
CULTURAL

SAFETY
TREES
CROSSROADS

LIGHTING
VISIBILITY

INTENSIFICATION
BUSY
TIMELESS FEEL

AUTO-ORIENTED
PLAZA

PEDESTRIAN CIRCULATION
EXPRESSION OF COMMUNITY
WAYFINDING
RETAIL

DIVERSITY

VIBRANT

TRANSIT DEPENDENT

CONTEXT & CHARACTER WORKSHOPS

COMMERCIAL HUB

DESTINATION
TRANSIT CONNECTIONS
CULTURAL

SAFETY
TREES
CROSSROADS

LIGHTING
VISIBILITY

INTENSIFICATION
BUSY
TIMELESS FEEL

AUTO-ORIENTED
PLAZA

PEDESTRIAN CIRCULATION
EXPRESSION OF COMMUNITY
WAYFINDING
RETAIL

DIVERSITY

VIBRANT

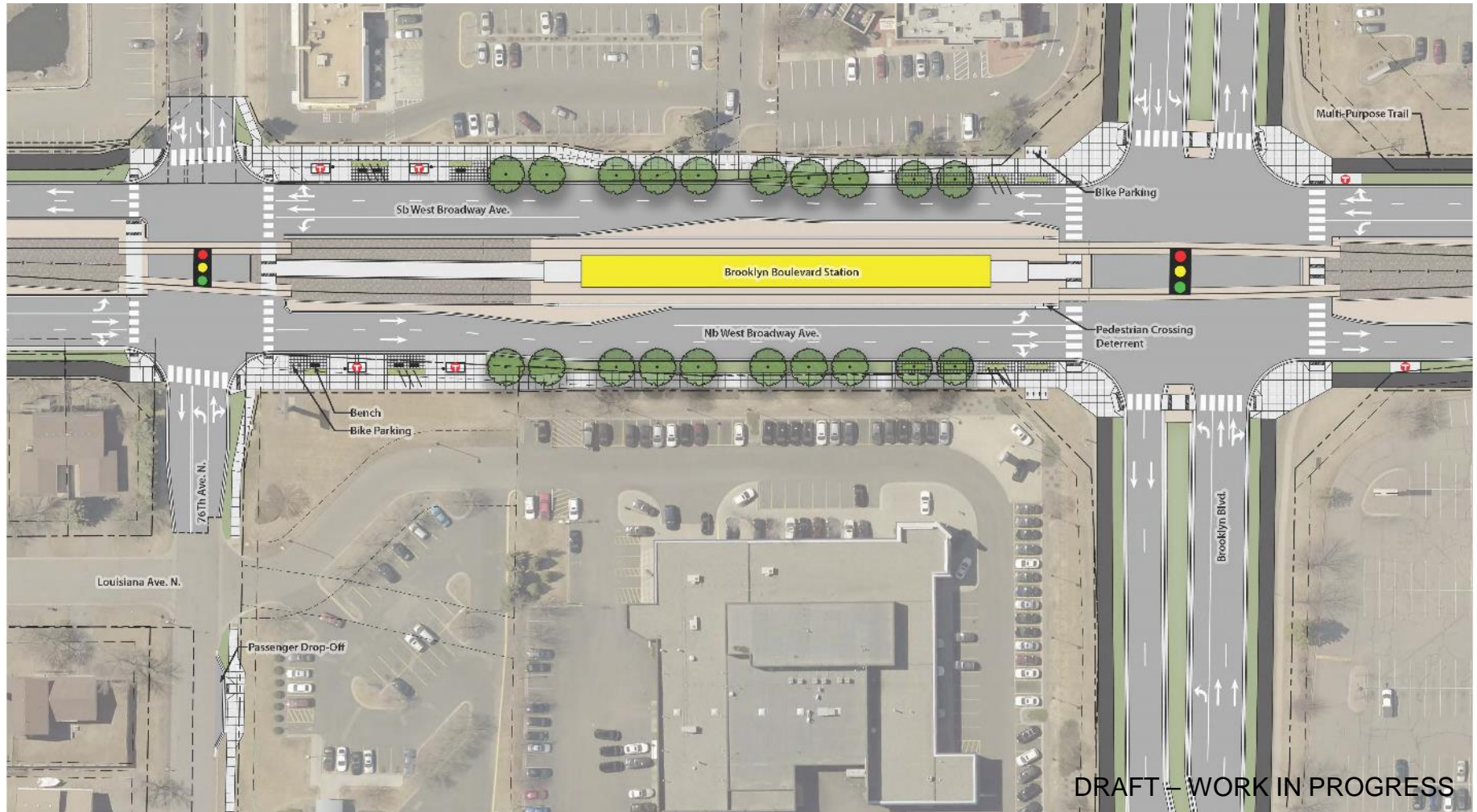
TRANSIT DEPENDENT

STATION DESIGN CONCEPTS

Brooklyn Blvd Station Context & Character Words



Station Plan Concept



Note: The streetscape design for West Broadway Ave. is being developed in coordination with the Visioning Team with input from the City, County, and Community. Improvements shown on the station site plan do not imply that the LRT Project will provide them. Final determination of funding sources for the streetscape features is yet to be determined.





DRAFT – WORK IN PROGRESS

View from West Broadway Ave looking Northwest





DRAFT - WORK IN PROGRESS

View from platform entry looking North



63rd Avenue Station



Aerial View of 63rd Ave Station Site



DRAFT-WORK IN PROCESS

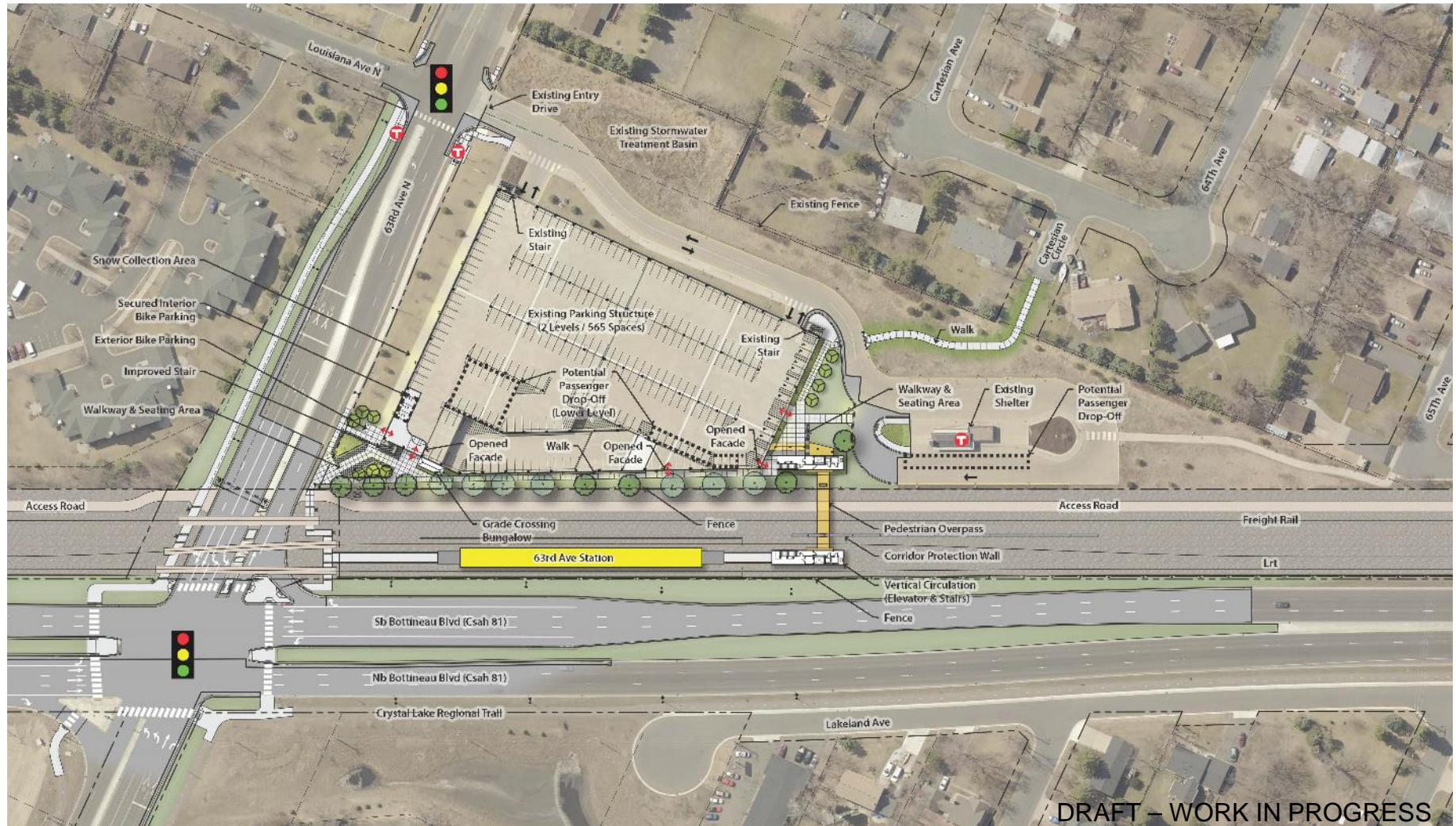




63rd Avenue Station Context & Character Words



Station Plan Concept





DRAFT – WORK IN PROGRESS

Birdseye view of 63rd Ave Station





DRAFT – WORK IN PROGRESS

View of plaza at park and ride entry





DRAFT – WORK IN PROGRESS

View of pedestrian overpass from LRT platform



Bass Lake Road Station



Aerial View of Bass Lake Rd Station Site



DRAFT-WORK IN PROCESS





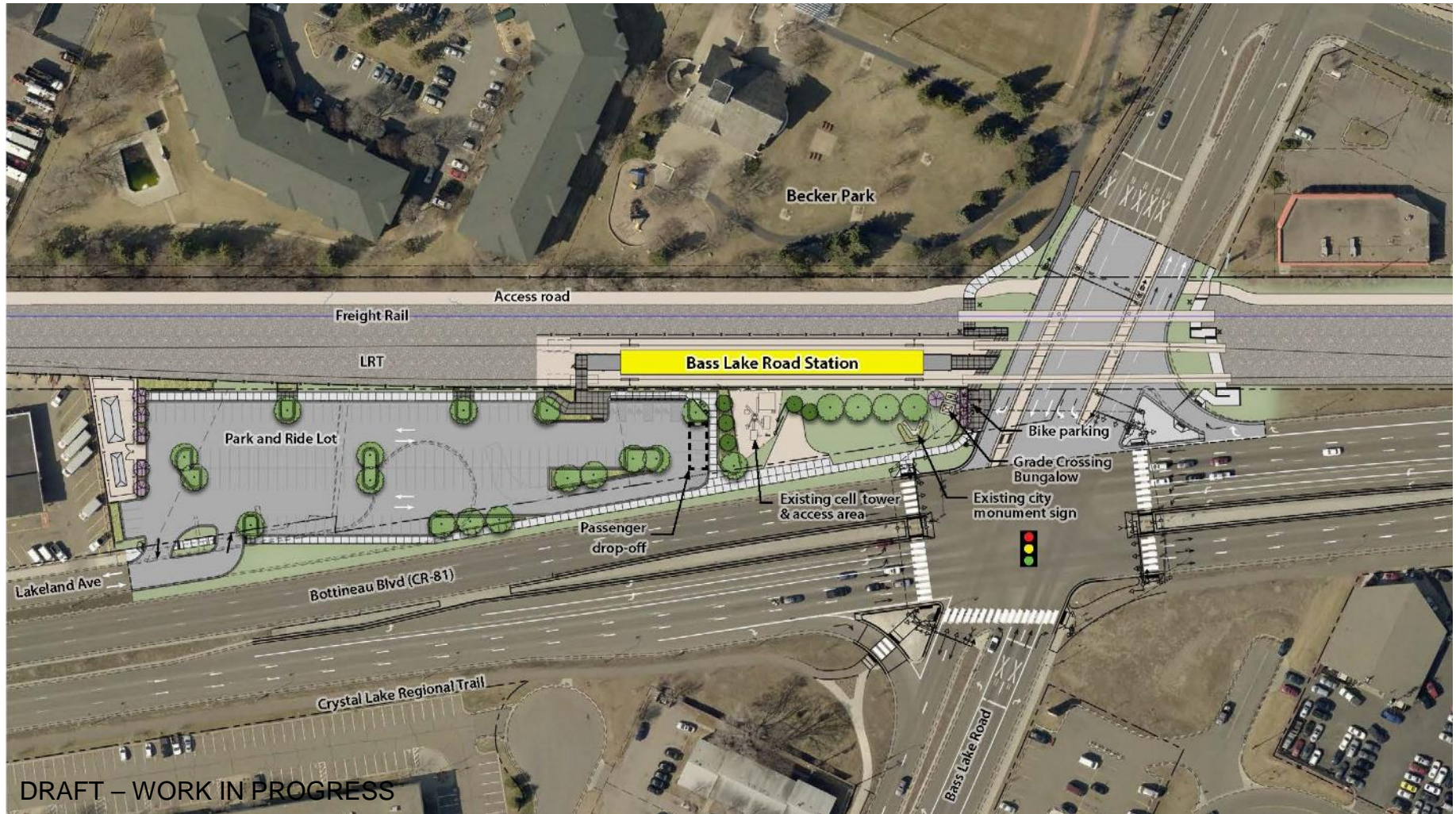
BECKER PARK MIXTURE OF USES
 FOOT TRAFFIC CONCERNS
 "OLD SCHOOL"
 PARK AND RIDE CONNECTION
RETAIL
 BITS OF EVERYTHING
 COMMERCIAL ACCESS
 WAVES OF REDEVELOPMENT
 MAIN STREET
 CRYSTAL AUTO-ORIENTED
 AIRPORT
ENTRYWAY
 INDUSTRIAL-FEEL
 REDUCE IMPACT
 CROSSROADS
 "WHAT IS THIS PLACE?"
 DISAPPEAR INTO LANDSCAPE
 CELL TOWER
 CONNECTION
 TO PARK
 ACCESS TO SHOPPING
GREENERY
 HEIGHTENED VISIBILITY
 BECOME WELCOMING
 DOWNTOWN
 TRANSITION
 PIECEMEAL
SEEKING IDENTITY
CONTEXT & CHARACTER WORKSHOPS

BECKER PARK MIXTURE OF USES
 FOOT TRAFFIC CONCERNS
 "OLD SCHOOL"
 PARK AND RIDE CONNECTION
RETAIL
 BITS OF EVERYTHING
 COMMERCIAL ACCESS
 WAVES OF REDEVELOPMENT
 MAIN STREET
 CRYSTAL AUTO-ORIENTED
 AIRPORT
ENTRYWAY
 INDUSTRIAL-FEEL
 REDUCE IMPACT
 CROSSROADS
 "WHAT IS THIS PLACE?"
 DISAPPEAR INTO LANDSCAPE
 CELL TOWER
CONNECTION
TO PARK
 ACCESS TO SHOPPING
GREENERY
 HEIGHTENED VISIBILITY
 BECOME WELCOMING
 DOWNTOWN
 TRANSITION
 PIECEMEAL
SEEKING IDENTITY
STATION DESIGN CONCEPTS

Bass Lake Road Station Context & Character Words



Station Plan Concept





DRAFT - WORK IN PROGRESS

View from Bass Lake Rd looking South





View of station looking Northwest from Park and Ride



Robbinsdale Station



Aerial View of Robbinsdale Station Site

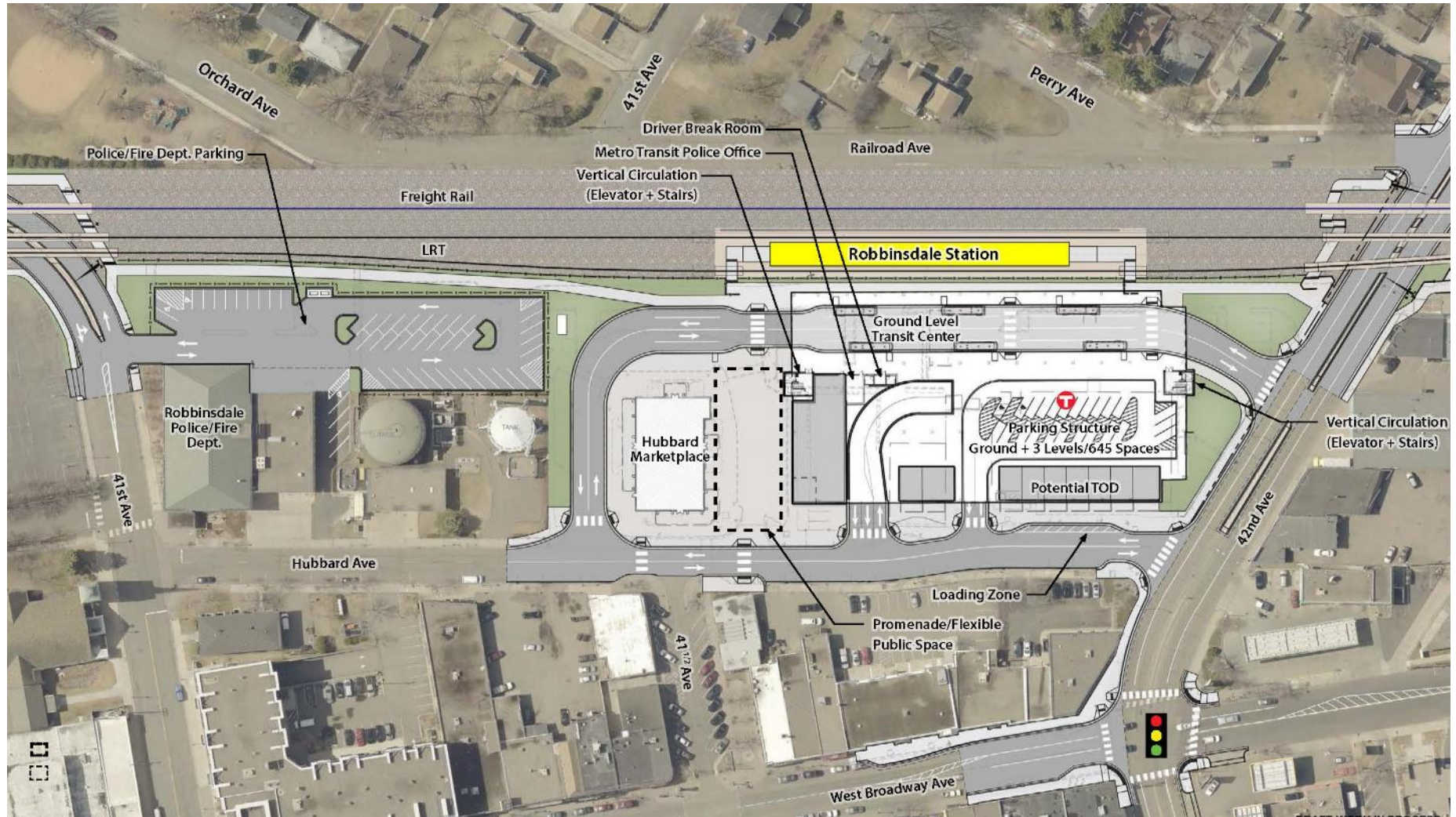




Robbinsdale Station Context & Character Words



Station Plan Concept





DRAFT – WORK IN PROGRESS

View from Railroad Ave looking West





DRAFT – WORK IN PROGRESS

View from Hubbard Ave looking West





DRAFT – WORK IN PROGRESS

View of transit center and station looking North



Golden Valley Road Station



Aerial View of Golden Valley Rd Station Site



DRAFT-WORK IN PROCESS





ACCESS TO
GRAND ROUNDS
HISTORY
NATURE
CONVENIENCE
VISIBILITY
LINEAR
CONTAINED
NEIGHBORHOOD
STATION
45TH PARALLEL
GATEWAY TO GOLDEN VALLEY
PARKING
CROSSROADS
RAILROADS
LOCALIZED
TRAILHEAD
BACKDOOR TO PARK
CONNECTIONS
WOODED ENVIRONMENT
HIDDEN
NAVIGATIONAL CHALLENGES
AUTOS, BIKES, PEDESTRIANS

CONTEXT & CHARACTER WORKSHOPS

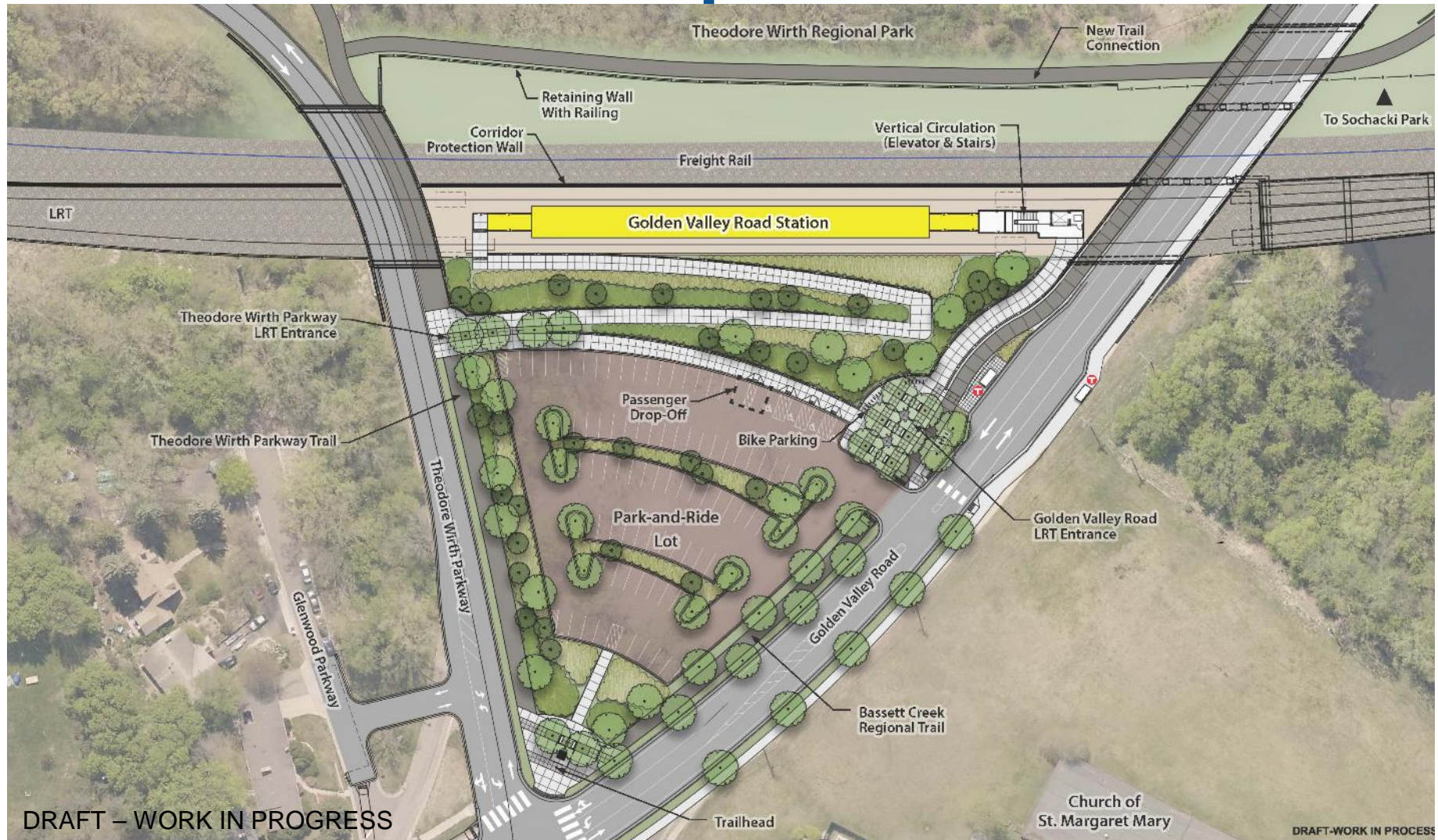
ACCESS TO
GRAND ROUNDS
HISTORY
NATURE
CONVENIENCE
VISIBILITY
LINEAR
CONTAINED
NEIGHBORHOOD
STATION
45TH PARALLEL
GATEWAY TO GOLDEN VALLEY
PARKING
CROSSROADS
RAILROADS
LOCALIZED
TRAILHEAD
BACKDOOR TO PARK
CONNECTIONS
WOODED ENVIRONMENT
HIDDEN
NAVIGATIONAL CHALLENGES
AUTOS, BIKES, PEDESTRIANS

STATION DESIGN CONCEPTS

Golden Valley Rd Station Context & Character Words



Station Plan Concept





DRAFT – WORK IN PROGRESS

View looking West at LRT station entrance – stairs and elevator





DRAFT – WORK IN PROGRESS

View looking West from walkway





DRAFT – WORK IN PROGRESS

View of LRT station looking North



Plymouth Avenue Station



Aerial View of Plymouth Ave Station



DRAFT-WORK IN PROCESS





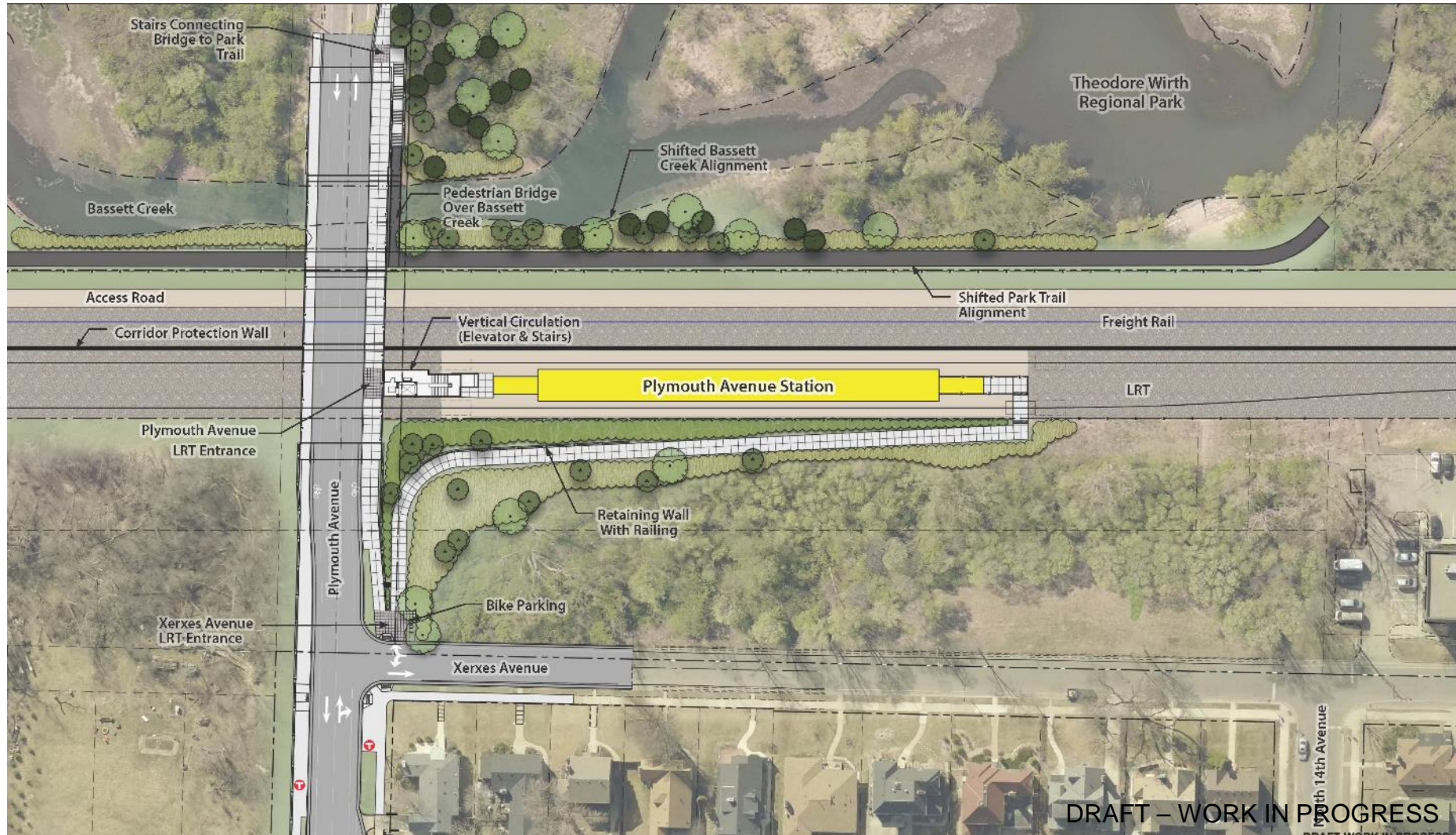
PARK TO NEIGHBORHOODS
 OPEN VISTAS
 NATURAL
 FORMS
 LINEAR
 BARRIERS
 CREEK
 GATEWAY
 CONFLUENCE
 ACCESS
 SUNKEN
 EDGE OF CITY MEETS NATURE
 “THE PARK’S
 STATION”
 DIFFERENCE BETWEEN NIGHT AND DAY
 “SHOULD I BE HERE?”
 INFORMAL USES
 FREIGHT CORRIDOR
 HISTORIC BUILDINGS
 TRANSITION
 HISTORIC
 HISTORY AND FUNCTION
 REGIONAL DESTINATION
 DARK
 FUNCTION AND RECREATION
 YEAR-ROUND RECREATION
 CONTEXT & CHARACTER WORKSHOPS

PARK TO NEIGHBORHOODS
 OPEN VISTAS
 NATURAL
 FORMS
 LINEAR
 BARRIERS
 CREEK
 GATEWAY
 CONFLUENCE
 ACCESS
 SUNKEN
 EDGE OF CITY MEETS NATURE
 “THE PARK’S
 STATION”
 DIFFERENCE BETWEEN NIGHT AND DAY
 “SHOULD I BE HERE?”
 INFORMAL USES
 FREIGHT CORRIDOR
 HISTORIC BUILDINGS
 TRANSITION
 HISTORIC
 HISTORY AND FUNCTION
 REGIONAL DESTINATION
 DARK
 FUNCTION AND RECREATION
 YEAR-ROUND RECREATION
 STATION DESIGN CONCEPTS

Plymouth Avenue Station Context & Character Words



Station Plan Concept

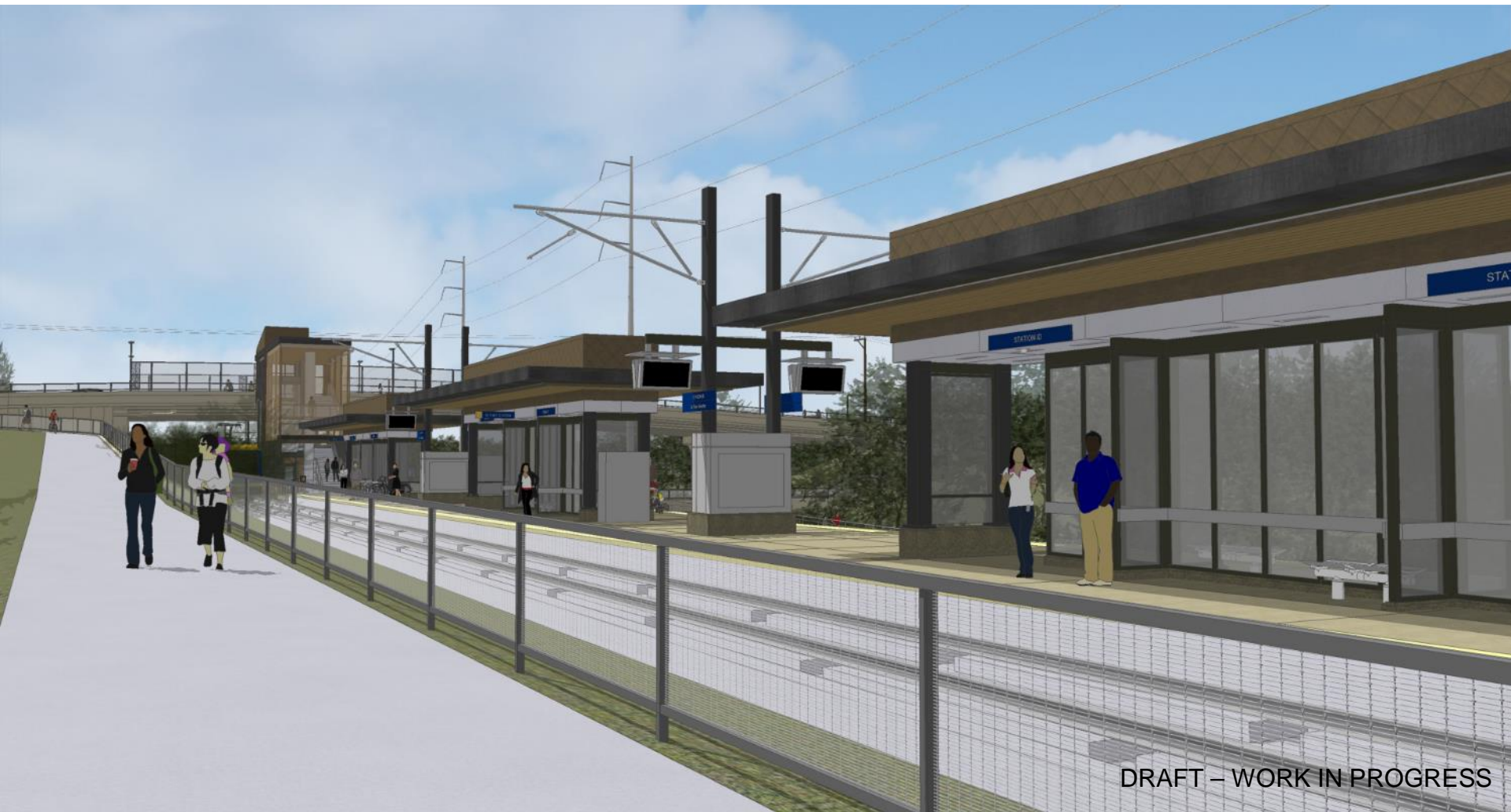




DRAFT – WORK IN PROGRESS

View on Plymouth Ave bridge looking North at LRT station entrance – stairs and elevator





DRAFT - WORK IN PROGRESS

View looking South from walkway access





DRAFT - WORK IN PROGRESS

View looking East from trail access



Penn Avenue Station



Aerial View of Penn Ave Station Site



DRAFT-WORK IN PROCESS





Penn Avenue Station Context & Character Words



Station Plan Concept





View from Olson Memorial Highway looking West





DRAFT - WORK IN PROGRESS

View from platform entry looking East



Van White Boulevard Station



Aerial View of Van White Blvd Station Site



DRAFT-WORK IN PROCESS





URBAN DOWNTOWN GATEWAY

RESIDENTIAL USES

HISTORIC LIBRARY
COMMERCIAL GROCERY STORE

TRAFFIC
BIKES
GREEN
DIVERSITY

ALIVE
HISTORIC AREA

SIMILAR TO PENN
DESTINATION
DENSITY

MOVEMENT IN REGION
TRANSITION CONNECTION

UNIQUE
PLANNED COMMUNITY

SAFETY

VISIBLE INSTITUTIONS

ACTIVE

FOOT TRAFFIC

BOLD AND BRIGHT
EXPANSIVE
OPEN AND VISIBLE
COMMUNITY
CONNECTION TO DOWNTOWN
DESTINATION

CONTEXT & CHARACTER WORKSHOPS

URBAN DOWNTOWN GATEWAY

RESIDENTIAL USES

HISTORIC LIBRARY
COMMERCIAL GROCERY STORE

TRAFFIC
BIKES
GREEN
DIVERSITY

ALIVE
HISTORIC AREA

SIMILAR TO PENN
DESTINATION
DENSITY

MOVEMENT IN REGION
TRANSITION CONNECTION

UNIQUE
PLANNED COMMUNITY

SAFETY

VISIBLE INSTITUTIONS

ACTIVE

FOOT TRAFFIC

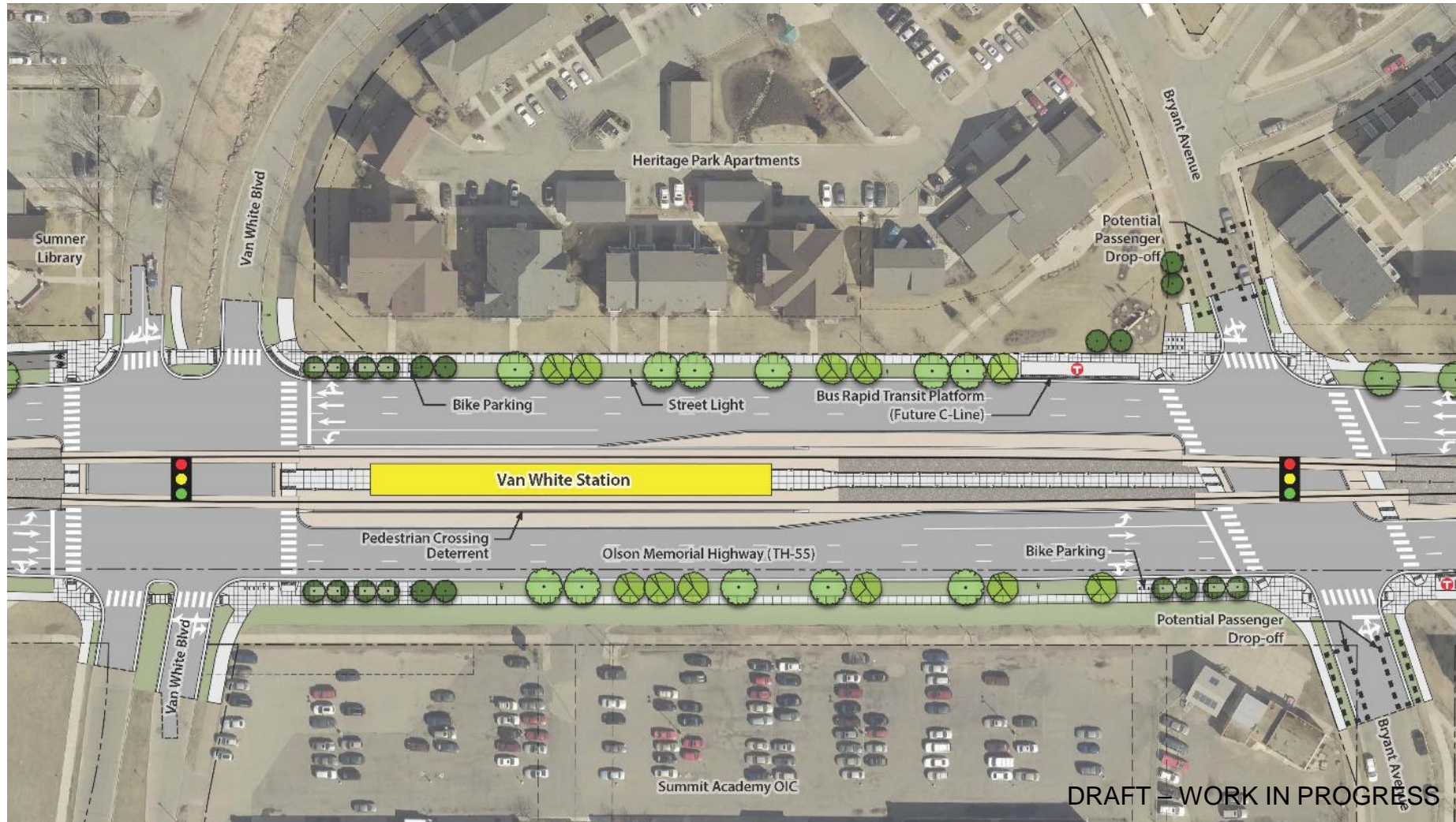
BOLD AND BRIGHT
EXPANSIVE
OPEN AND VISIBLE
COMMUNITY
CONNECTION TO DOWNTOWN
DESTINATION

STATION DESIGN CONCEPTS

Van White Blvd Station Context & Character Words



Station Plan Concept





DRAFT – WORK IN PROGRESS

View from Olson Memorial Highway looking Northeast





DRAFT – WORK IN PROGRESS

View from platform entry looking West



Community Open Houses



Station Design: Public Engagement

- Receive input from project partners, Community and Business Advisory Committees and Corridor Management Committees
- Share station design concepts at Community Open Houses:
 - Nov 9 – 17
- Presentation materials, station design boards and comment form posted on project website: BlueLineExt.org

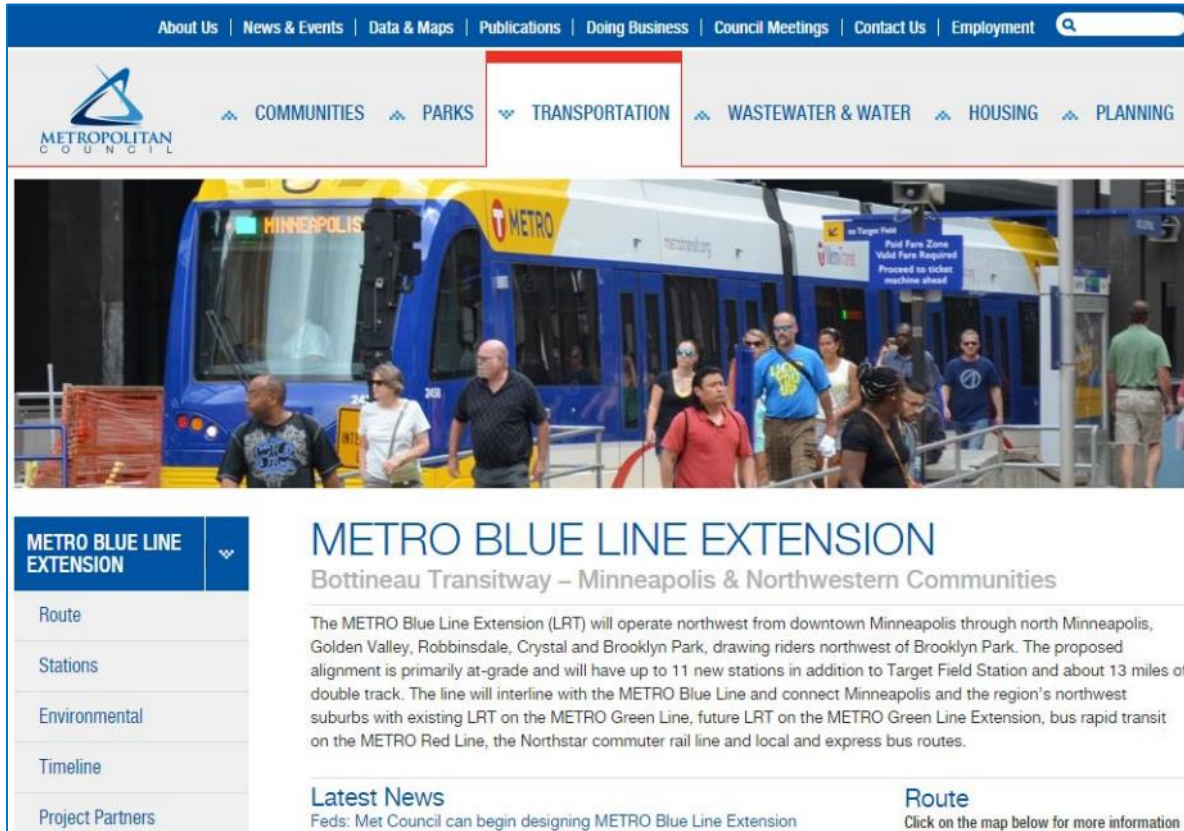


Next Steps

- Oct - Nov: Receive community/project partner input on 30% station design concepts
- Dec - Jan: Review input received
- Feb: Finalize 60% station design
- Spring/Summer: Community updates



More Information



The screenshot shows the Metropolitan Council website with a navigation bar at the top containing links: About Us | News & Events | Data & Maps | Publications | Doing Business | Council Meetings | Contact Us | Employment. Below this is a secondary navigation bar with icons and labels for COMMUNITIES, PARKS, TRANSPORTATION (highlighted with a red border), WASTEWATER & WATER, HOUSING, and PLANNING. The main content area features a large photo of a blue and yellow METRO bus with 'MINNEAPOLIS' and 'METRO' branding, with several people standing in front of it. Below the photo is a section titled 'METRO BLUE LINE EXTENSION' with a sub-header 'Bottineau Transitway – Minneapolis & Northwestern Communities'. The text describes the project: 'The METRO Blue Line Extension (LRT) will operate northwest from downtown Minneapolis through north Minneapolis, Golden Valley, Robbinsdale, Crystal and Brooklyn Park, drawing riders northwest of Brooklyn Park. The proposed alignment is primarily at-grade and will have up to 11 new stations in addition to Target Field Station and about 13 miles of double track. The line will interline with the METRO Blue Line and connect Minneapolis and the region's northwest suburbs with existing LRT on the METRO Green Line, future LRT on the METRO Green Line Extension, bus rapid transit on the METRO Red Line, the Northstar commuter rail line and local and express bus routes.' To the left of this text is a sidebar with a blue header 'METRO BLUE LINE EXTENSION' and a dropdown arrow, followed by links: Route, Stations, Environmental, Timeline, and Project Partners. Below the main text are two sections: 'Latest News' with the headline 'Feds: Met Council can begin designing METRO Blue Line Extension' and 'Route' with the text 'Click on the map below for more information'.

About Us | News & Events | Data & Maps | Publications | Doing Business | Council Meetings | Contact Us | Employment

METROPOLITAN COUNCIL

COMMUNITIES PARKS **TRANSPORTATION** WASTEWATER & WATER HOUSING PLANNING

METRO BLUE LINE EXTENSION

Route

Stations

Environmental

Timeline

Project Partners

METRO BLUE LINE EXTENSION

Bottineau Transitway – Minneapolis & Northwestern Communities

The METRO Blue Line Extension (LRT) will operate northwest from downtown Minneapolis through north Minneapolis, Golden Valley, Robbinsdale, Crystal and Brooklyn Park, drawing riders northwest of Brooklyn Park. The proposed alignment is primarily at-grade and will have up to 11 new stations in addition to Target Field Station and about 13 miles of double track. The line will interline with the METRO Blue Line and connect Minneapolis and the region's northwest suburbs with existing LRT on the METRO Green Line, future LRT on the METRO Green Line Extension, bus rapid transit on the METRO Red Line, the Northstar commuter rail line and local and express bus routes.

Latest News
Feds: Met Council can begin designing METRO Blue Line Extension

Route
Click on the map below for more information

Website: BlueLineExt.org

Email: BlueLineExt@metrotransit.org

Twitter: [@BlueLineExt](https://twitter.com/BlueLineExt)

