



# Corridor Management Committee

December 17, 2014



# Today's Topics

- Technical Issues/Issue Resolution Process
- Environmental Consultant Contract Update
- Advisory Committees
  - Community Advisory Committee
  - Business Advisory Committee
  - Communications Steering Committee



# Technical Issues/Issue Resolution Process



# Project Timeline

2014-2016

- Project Development

2016

- Environmental/Municipal Consent

2017

- Engineering

2018

- Full Funding Grant Agreement

2018-20

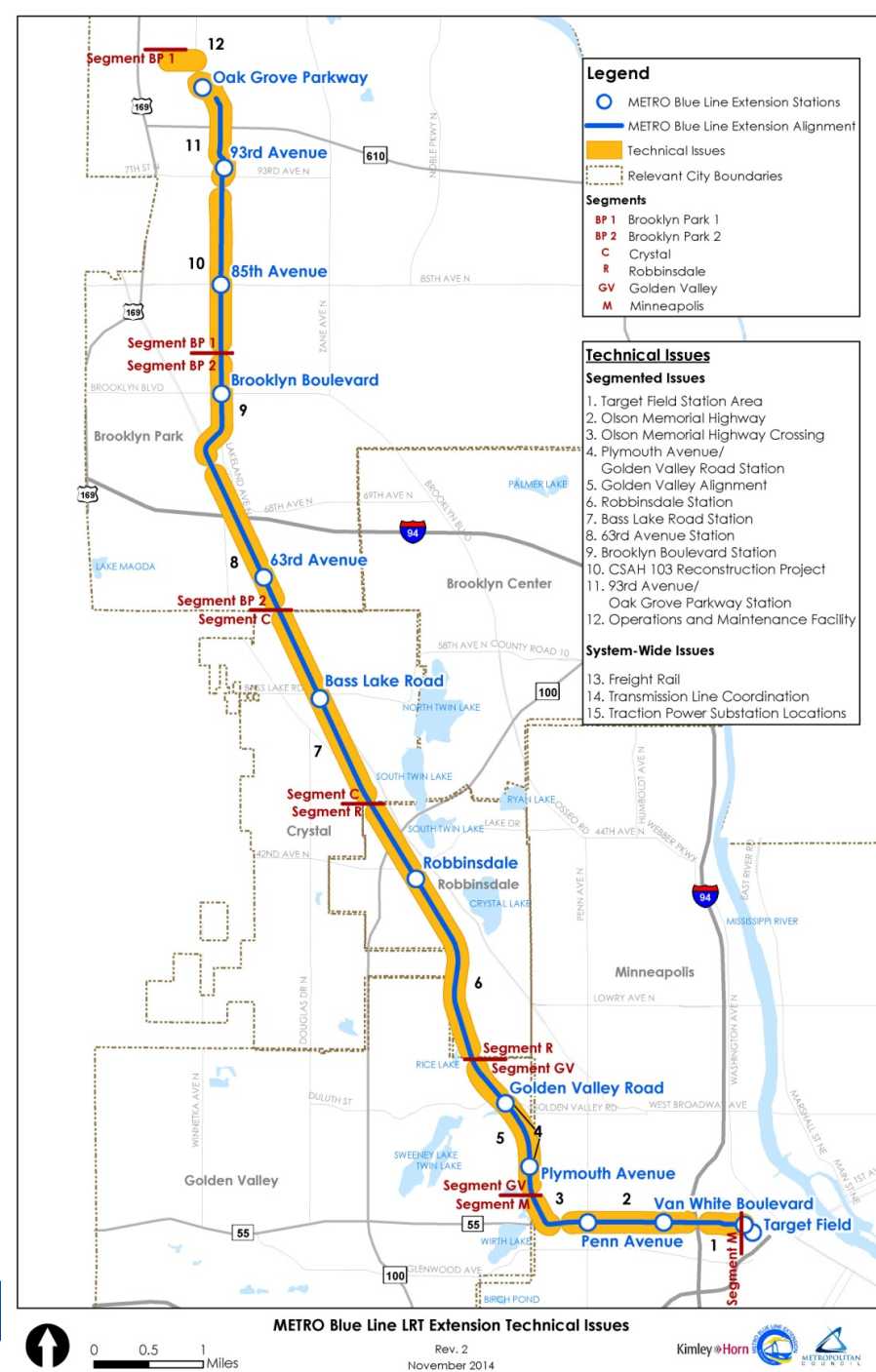
- Heavy Construction

2021

- Passenger Operations



# Technical Issues



# Minneapolis

Segment	Technical Issue	Sub Issues	Schedule
M-1	Target Field Station Connection	7 <sup>th</sup> Street Intersection Design	Q3 2015
M-2	Olson Memorial Highway	I-94 Interchange Operations	Q3 2015
		Design Treatment	Q1 2015
		Penn Ave Intersection operations	Q3 2015
		Median Tree Impacts	Q3 2015
M-3	Olson Memorial Highway Crossing	Right-of-way Pinch Point	Q3 2015
		Bassett Creek Floodplain Impacts	Q3 2015
		Poor Soils through Watershed	Q2 2015



# Golden Valley

Segment	Technical Issue	Sub Issues	Schedule
GV-4	Plymouth Ave/Golden Valley Road Station	Station Location	Q1 2015
		Parking	Q2 2015
GV-5	Golden Valley Alignment	Bassett Creek Floodplain Impacts	Q3 2015
		Poor Soils	Q2 2015
		Theo. Wirth Park Property Impacts	Q4 2015



# Robbinsdale

Seg- ment	Technical Issue	Sub Issues	Schedule
R-6	Robbinsdale Station	Park and Ride, Bus Transit Hub	Q2 2015
		At-Grade Crossing at 39 ½ - 40 <sup>th</sup>	Q3 2015
		Grade Separated Pedestrian Crossings of LRT Tracks	Q3 2015
		Traffic Impacts at 42 <sup>nd</sup> Ave Crossing	Q3 2015
		Noise and Visual Impacts	Q3 2015





# Crystal

Segment	Technical Issue	Sub Issues	Schedule
C-7	Bass Lake Road Station	Station access via all modes	Q1 2015
		Quiet zone for at-grade crossings	Q3 2015
		Parking/drop off areas	Q2 2015
		Vera Cruz/West Broadway Intersection	Q3 2015



# Brooklyn Park

Seg- ment	Technical Issue	Sub Issues	Schedule
BP2-8	63 <sup>rd</sup> Ave Park & Ride	Park & Ride Expansion	Q1 2015
BP2-9	Brooklyn Blvd Station	73 <sup>rd</sup> Ave Crossing	Q1 2015
BP1-10	CSAH 103 Reconstruction Project	Coordination with Hennepin Co reconstruction project	Q1 2015
		Traffic Impacts	Q2 2015
		Operating Assumptions	Q1 2015
		Maintenance Responsibility	2016
BP1-11	93 <sup>rd</sup> Ave/Oak Grove Parkway Station	Park and Ride	Q1 2015
		Station configuration	Q1 2015
BP1-12	OMF	Site selection and size	Q1-Q2 2015

# System Wide

Seg- ment	Technical Issue	Sub Issues	Schedule
13	Freight Rail	Design Issues	Q2 2015
		ROW Acquisition	Q4 2015
14	Transmission Line Coordination	Location and Support Structures for Xcel HVTL	Q2 2015
15	Traction Power Substation	Locations	Q4 2015

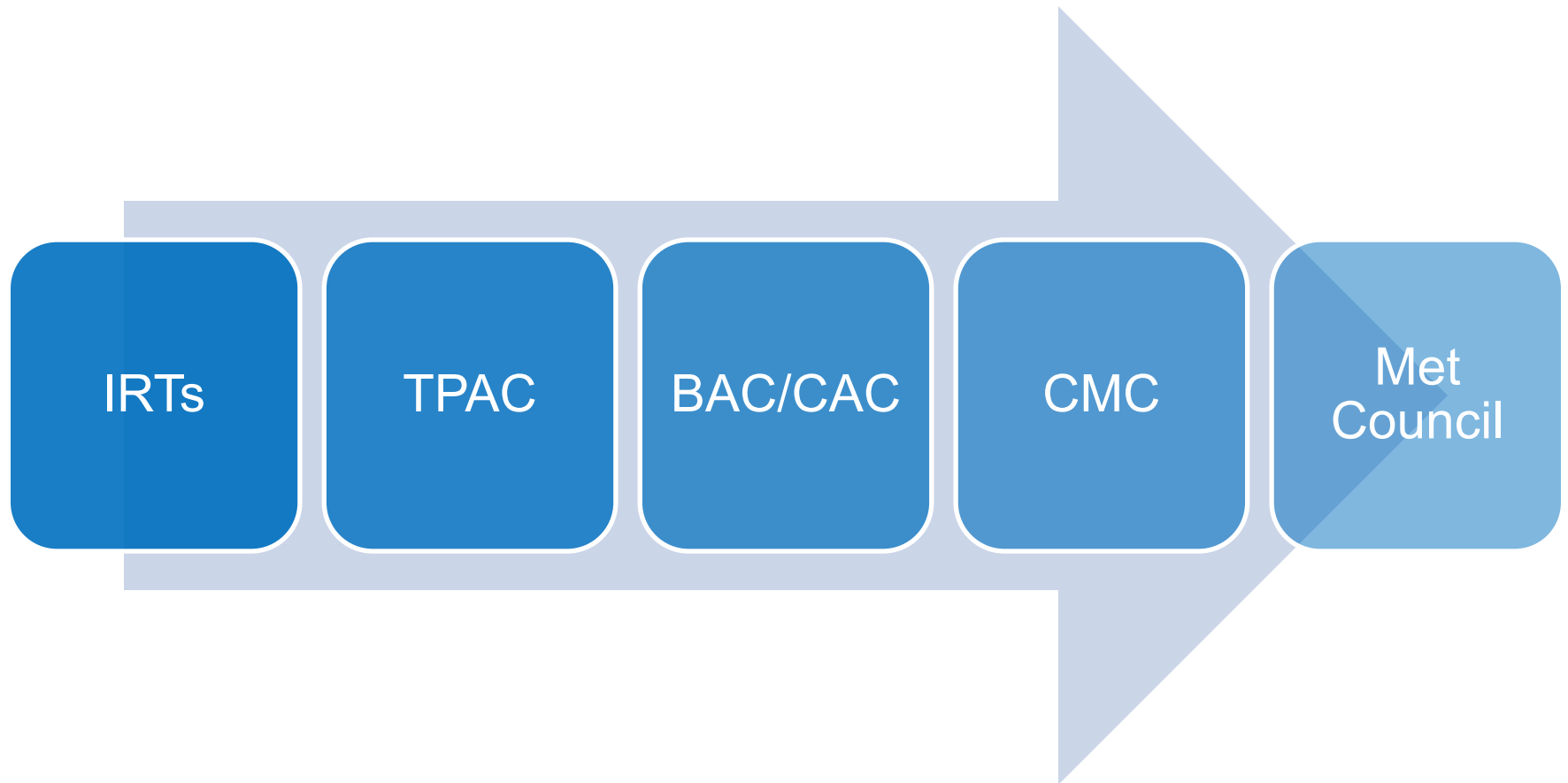


# Engage Project Partners Through Issue Resolution Teams

- IRT Members
  - BPO Design & Engineering staff
  - BPO Environmental, Development and Outreach staff
  - Engineering Consultants
  - Agency staff: Cities, MnDOT, County, Park Board, Watershed Districts, Freight Railroads
- IRT Meetings
  - Began in December



# Issue Resolution Process



# Environmental Consultant Contract Update



# Environmental Review Process

2013

- LPA adopted by Met Council
- Draft EIS preparation

2014

- Draft EIS published
- Draft EIS comment period closed

2015

- Complete Environmental Analysis

2016

- Final EIS published / Record of Decision (ROD) issued



# Environmental Consultant

- Received 3 proposals
- Included Met Council, Hennepin County, and MnDOT on evaluation panel
- Selected HDR proposal as most advantageous
- Executed contract in December, following Council action





# Next Steps

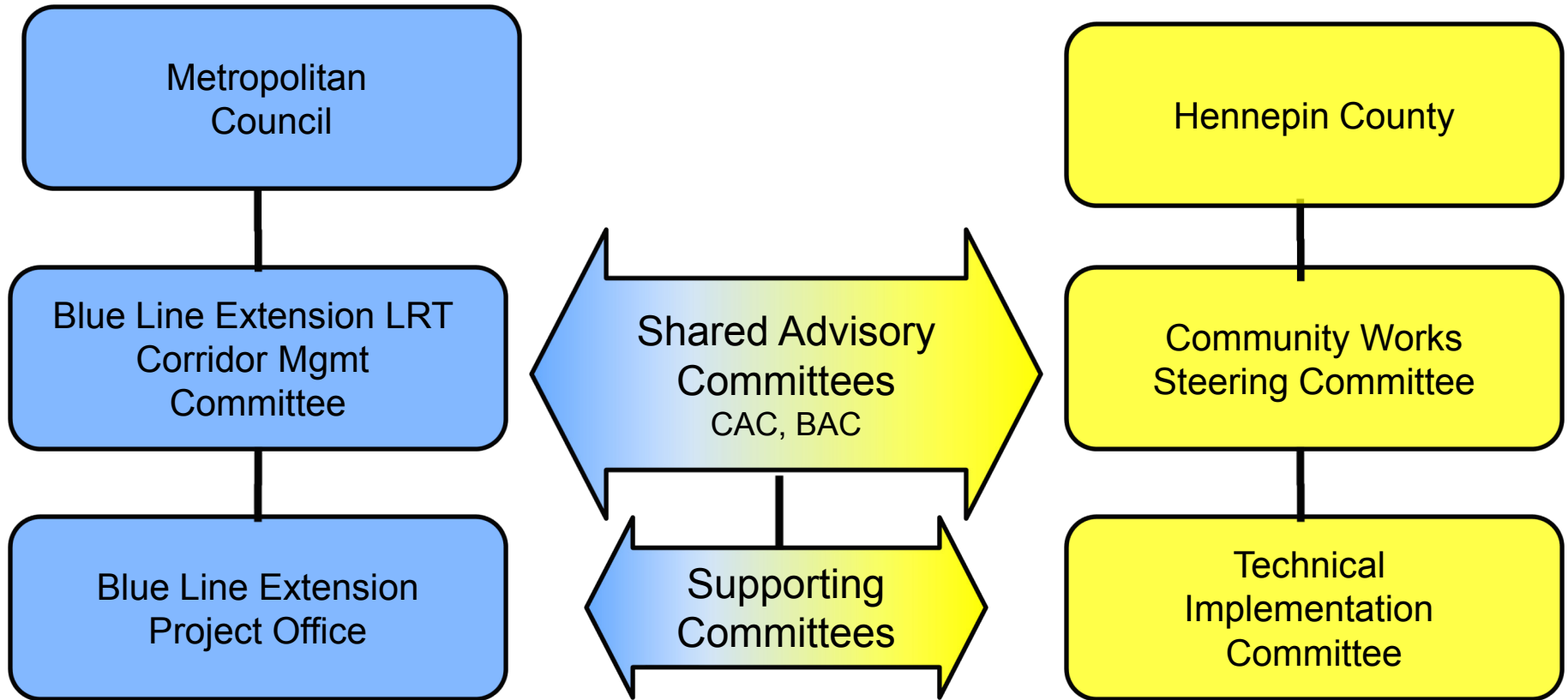
- HDR developing detailed work plan and schedule
- BPO will begin holding regular coordination meetings with FTA environmental staff in January 2015



# Advisory Committees



# Advisory Committees

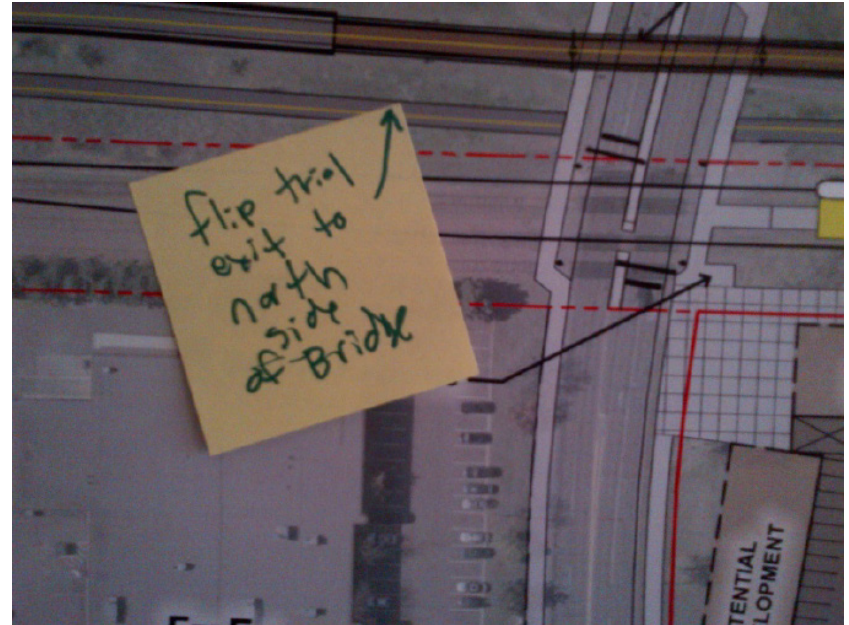


# Business and Community Advisory Committees

- Serve as a voice for the community
- Advise Corridor Management and Community Works Steering Committees
- Provide input on design: stations, operations and maintenance facility, bike, pedestrian, and park-and-ride facilities
- Serve as information resource and liaison to the community



# Business and Community Advisory Committees



Advisory committee discussion and input



# Accountability

- Serve a 2-year term and attend meetings
- Actively participate in discussions; be a voice to advance the broader interests of community
- Report back to entity represented
- Provide feedback on communication and public involvement efforts
- Listen to and respect the viewpoints of others
- Accept outcomes of Met Council decisions



# Advisory Committee Leadership

- Co-Chair appointments:
  - Corridor-wide perspective
- Co-Chair roles/responsibilities:
  - Lead committees through their tasks and ensure charter compliance
  - Identify topics/issues of committee concern
  - Develop meeting agendas with BPO and Hennepin County staff



# BPO and Hennepin County Staff

- Identify topics/issues for advisory committee feedback and CMC/CW Steering Committee guidance
- Develop meeting agendas with Advisory Committee Co-chairs
- Distribute agendas and meeting summaries
- Post committee presentations/meeting materials on [BlueLineExt.ORG](http://BlueLineExt.ORG)





# CAC Membership

- Community appoints members:
  - Minneapolis: 3 members
  - Golden Valley: 2 members
  - Robbinsdale: 2 members
  - Crystal: 2 members
  - Brooklyn Park: 3 members
- Corridors of Opportunity Engagement Grantees: 10
  - 2011/2012 Grantees: Asian Media Access, African Career Education and Resource, Inc., Asian Economic Development Association, Cleveland Neighborhood Association, Harrison Neighborhood Association, Masjid An-Nur, Northside Residents Redevelopment Council, La Asamblea de Derechos-Civiles, Centro de Trabajadores Unidos en la Lucha, Metropolitan Interfaith Council on Affordable Housing
- At-large representation appointed by Met Council and Hennepin County Community Works: 2



# BAC Membership

- Community appoints 2 members each:
  - Minneapolis
  - Golden Valley
  - Robbinsdale
  - Crystal
  - Brooklyn Park
- Chambers of Commerce appoint 1 member each:
  - Minneapolis Regional
  - TwinWest
  - Robbinsdale
  - North Hennepin Area
- At-large representation appointed by Met Council and Hennepin County Community Works: 3



# BAC/CAC Next Steps

- Send letters of invite: February 2015
- Receive Nominations: March 2015
- Hold joint BAC/CAC kick-off: late March 2015



# Communications Steering Committee

- Membership: City, county, BPO, Park Board, and MnDOT communications and outreach staff
- Purpose:
  - Ensure delivery of consistent key messages in all communications about the project
  - Identify opportunities to leverage existing communications vehicles to promote the project
  - Coordinate public information and outreach with project partners



# More Information

- Website: [BlueLineExt.org](http://BlueLineExt.org)
- Email: [BlueLineExt@metrotransit.org](mailto:BlueLineExt@metrotransit.org)
- Twitter: [#bluelineext](https://twitter.com/bluelineext)

