

Southwest LRT Management Committee



April 27, 2011



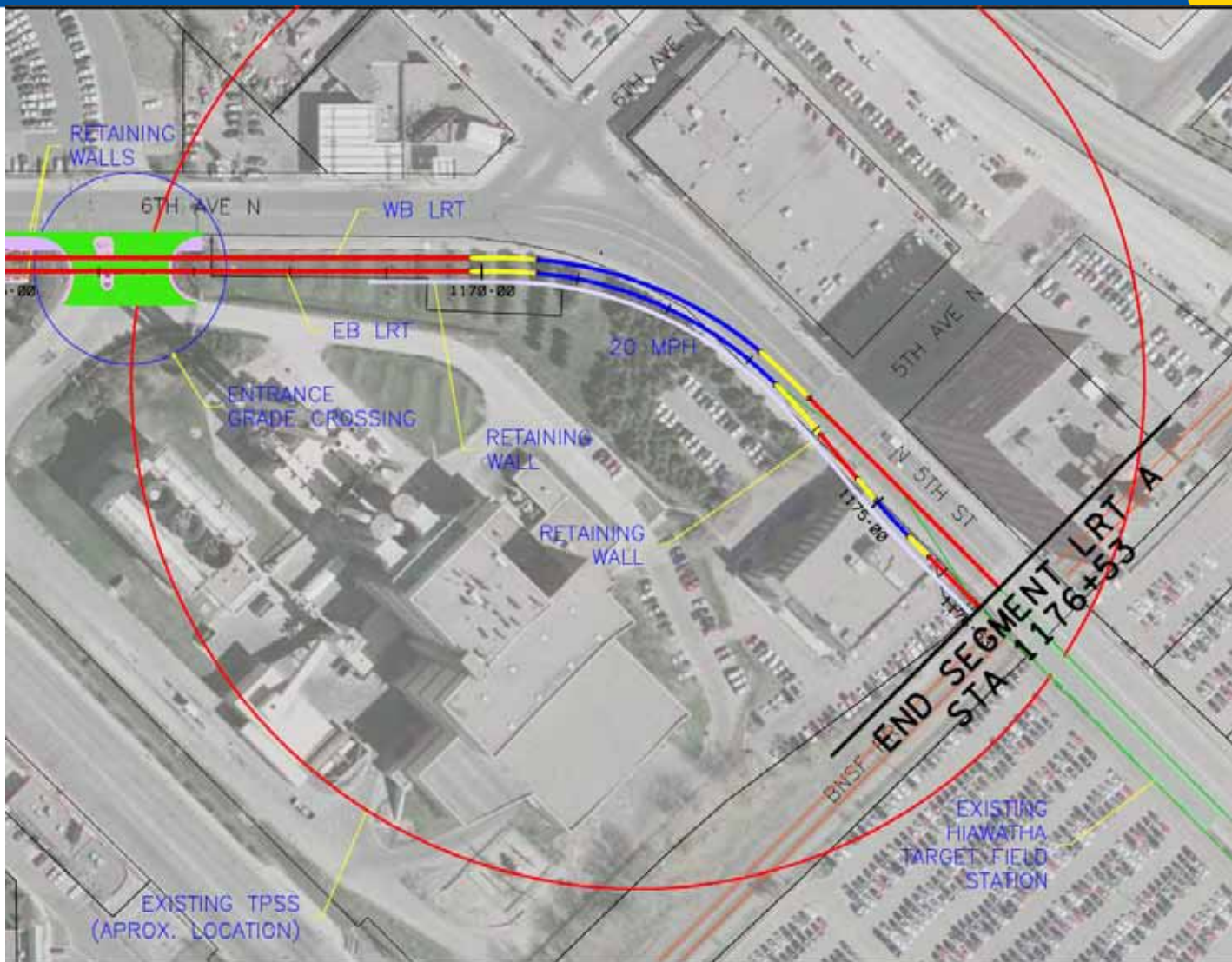
EDEN PRAIRIE ■ MINNETONKA ■ EDINA ■ HOPKINS ■ ST. LOUIS PARK ■ MINNEAPOLIS

- PE/DEIS Status Update
- Engineering Services Contract
- Park & Ride Guidelines
- Cash Flow Needs for Project Office Startup

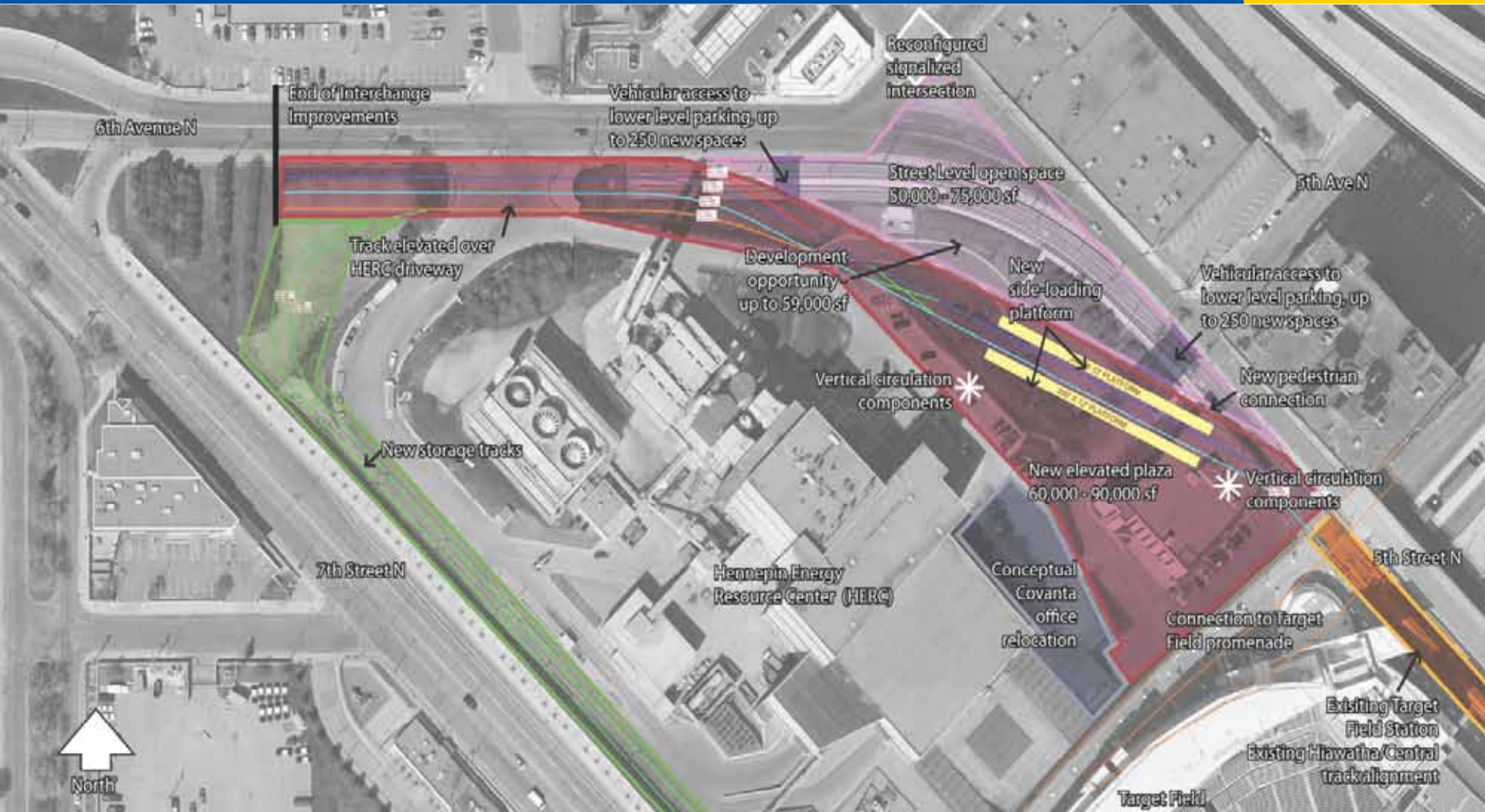
PE/DEIS Status Update



SWLRT Independent Project



Interchange Independent Project



- FTA questioning independent utility
- March 31 – Interchange letter to FTA
- April 13 – SWLRT letter to FTA

Engineering Services Contract



- Project Management Support
- Preliminary Engineering
- Final Design
- Design Support During Construction

- Identify Stakeholders' Key Technical Issues
- Complete Scope of Work
- Assemble Draft RFP
- Review Draft RFP with Evaluation Panel & Technical Advisors
- Finalize RFP based on Input

- Evaluation Panel
 - Project Office
 - Light Rail Operations
 - Mn/DOT
 - Hennepin County
 - Community Works

- Technical Advisors
 - Project Office
 - Light Rail Operations
 - Cities

- May
 - Key Issues Meetings with Mn/DOT, County, Cities
- June
 - Review and Comment, & Finalize RFP
- July
 - Advertise RFP

* Contingent upon FTA approval to enter PE by July 1st

Park & Ride Guidelines



Southwest LRT

Project Office

- Led by the Council
- Oversee & Coordinate the LRT Project
- Planning, Design and Construction

Southwest LRT

Community Works

- Led by the County
- Create Shared Vision & Implementation Strategy
- Station Area Development & Corridor-Wide Issues

SWPO and SWCW will work closely with stakeholders, both independently and in conjunction.

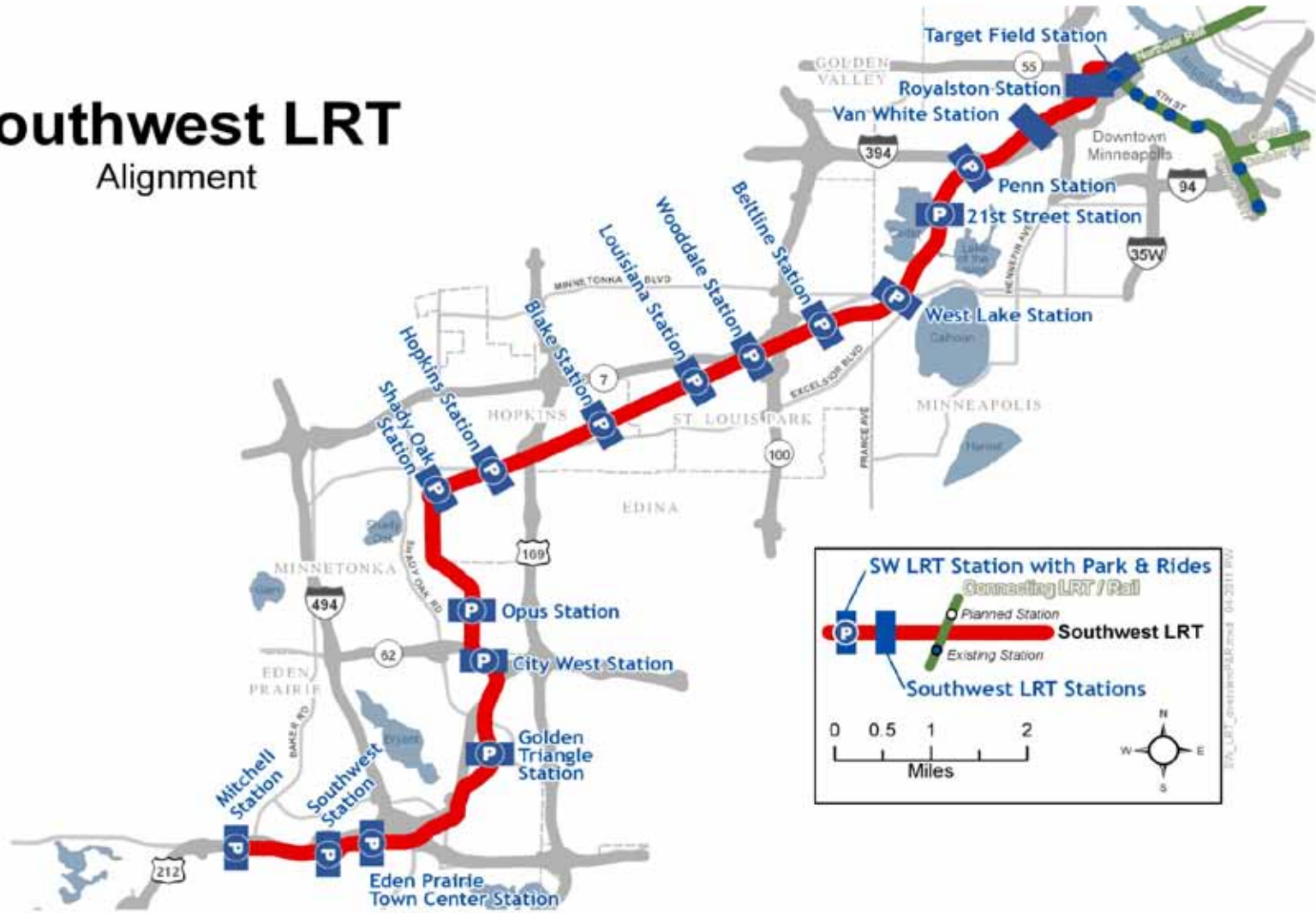
Access & Parking Subcommittee

- To provide formalized input/guidance to the SWPO
- To ensure that decisions on park-and-ride are integrated with land use/development decisions
- To ensure that enough parking is provided to support the project
- To ensure that the parking be sited and/or managed in a manner that supports TOD at station sites

- Federally Compliant Approach
- Tool to Assist Decision-Makers
- 4-Step Process
 - Trip Generation
 - Trip Distribution
 - Mode Choice
 - Trip Assignment
- 3,500 spaces spread across 15 of 17 SWLRT stations

Southwest LRT

Alignment



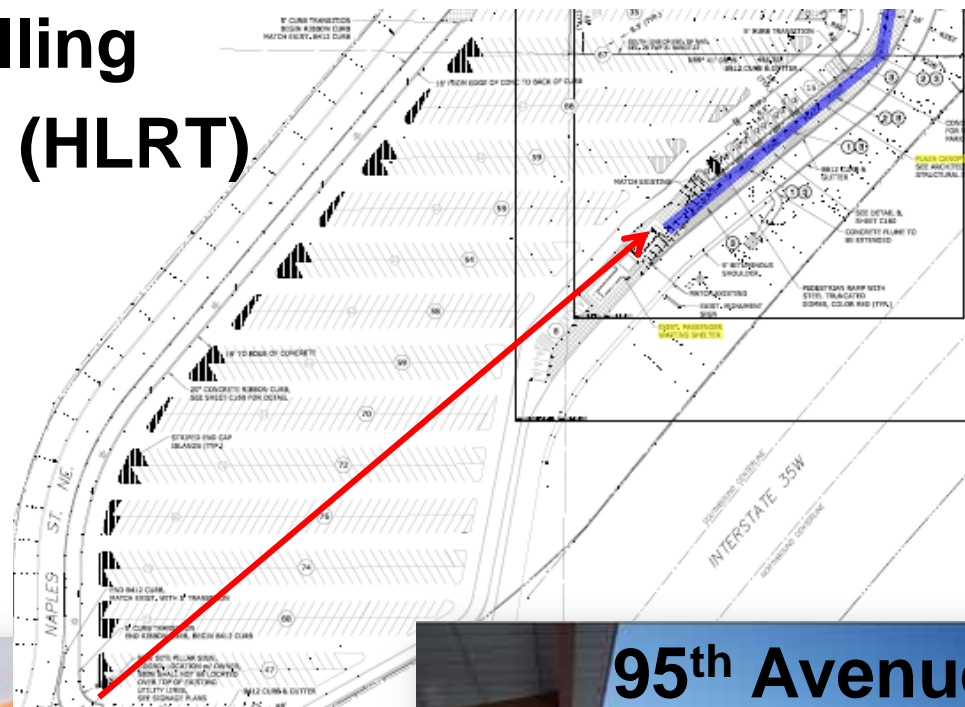
- Park-and-Ride Demand Model
 - Methodology
 - Validation
- Transitways vs. Express Bus
- Site Selection & Design Criteria



Lessons Learned: Proximity



Ft. Snelling Station (HLRT)



28th Ave Station (HLRT)



95th Avenue Park & Ride (Bus)

Walkway roughly 370 ft

Lessons Learned: "Spillover Effect"



Lake St/Midtown Station (HLRT)



Apple Valley Transit Station (Bus)

Lessons Learned: "Hide & Ride"



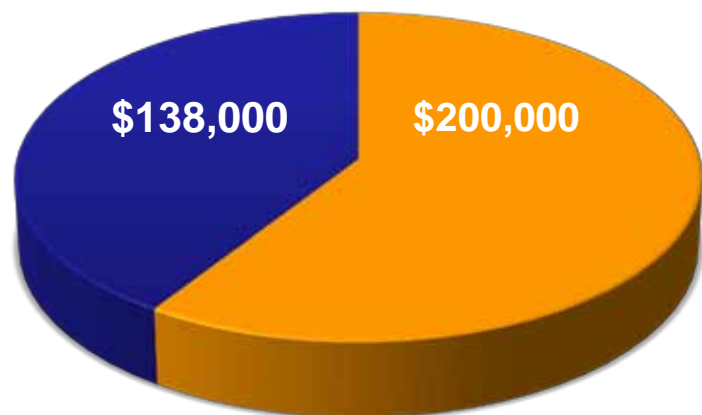
I-94 & Snelling Ave (Bus)



50th St Station (HLRT)

Cash Flow Needs for Project Office

Total Committed Funding
for Pre-PE: 338k



■ FTA 5339

■ RTC

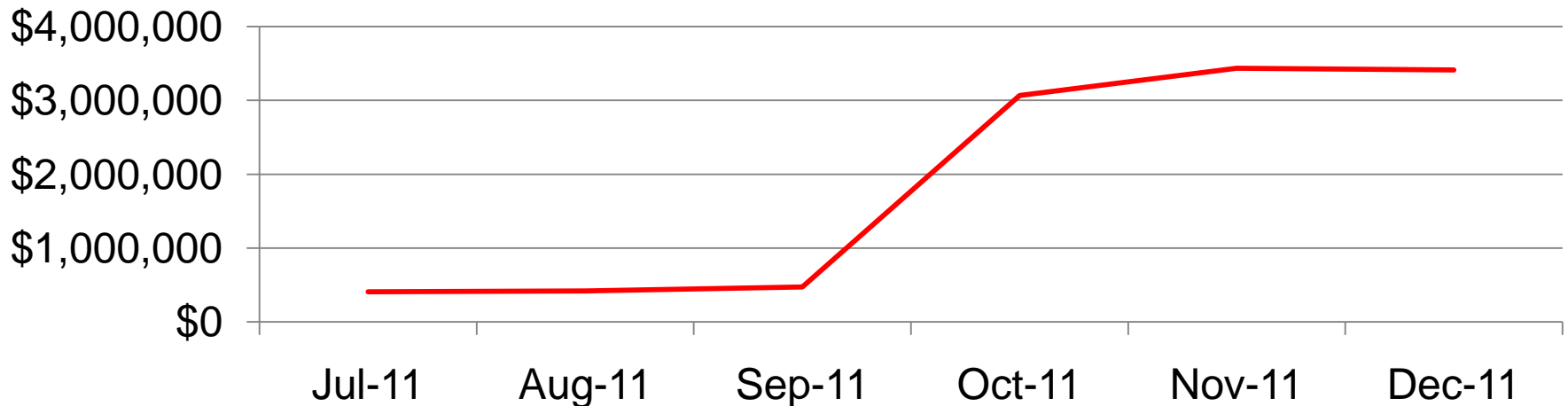
Staff

Program Director
Project Director
Senior Project Manager
Executive Assistant
Intern

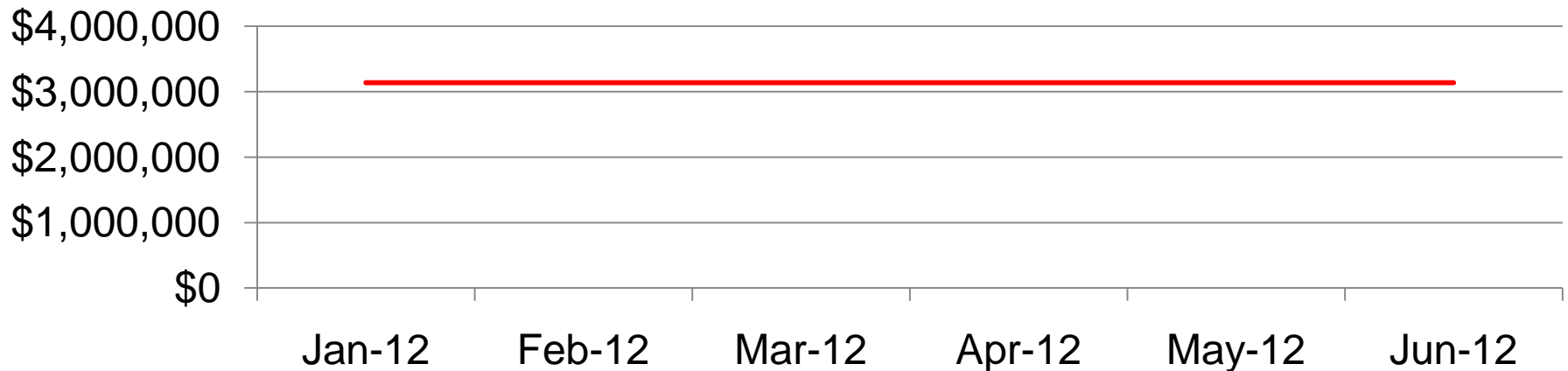
Tasks

Request Entry into PE Submittal
Pre-PE Risk Assessment
Project Financing
Stakeholder Outreach
Interim Project Office Formation

- Recruitment of Deputy Director, 2 Assistant Directors, Transit System Design & Engineering Director, Design Engineer
- Beginning of Engineering Services Activities
- Beginning of Environmental Services Activities
- Establishment of a Permanent Project Office Location



- Continuation of Engineering Services Activities
- Continuation of Environmental Services Consultant Activities



<http://www.metrocouncil.org/transportation/SW/SouthwestLRT.htm>

- Mark Fuhrmann, Program Director – New Starts Rail Projects
651-602-1942
mark.fuhrmann@metc.state.mn.us
- Chris Weyer, Project Director - Southwest LRT
651-602-1932
chris.weyer@metc.state.mn.us