



Community Advisory Committee

April 12, 2012





Today's Agenda

- Welcome
- Introductions
- Charter
- Ground rules
- Management Committee report
- Public Forum
- Assignment
- Adjourn



Welcome

Susan Haigh, Metropolitan Council Chair

Gail Dorfman, Hennepin County
Commissioner

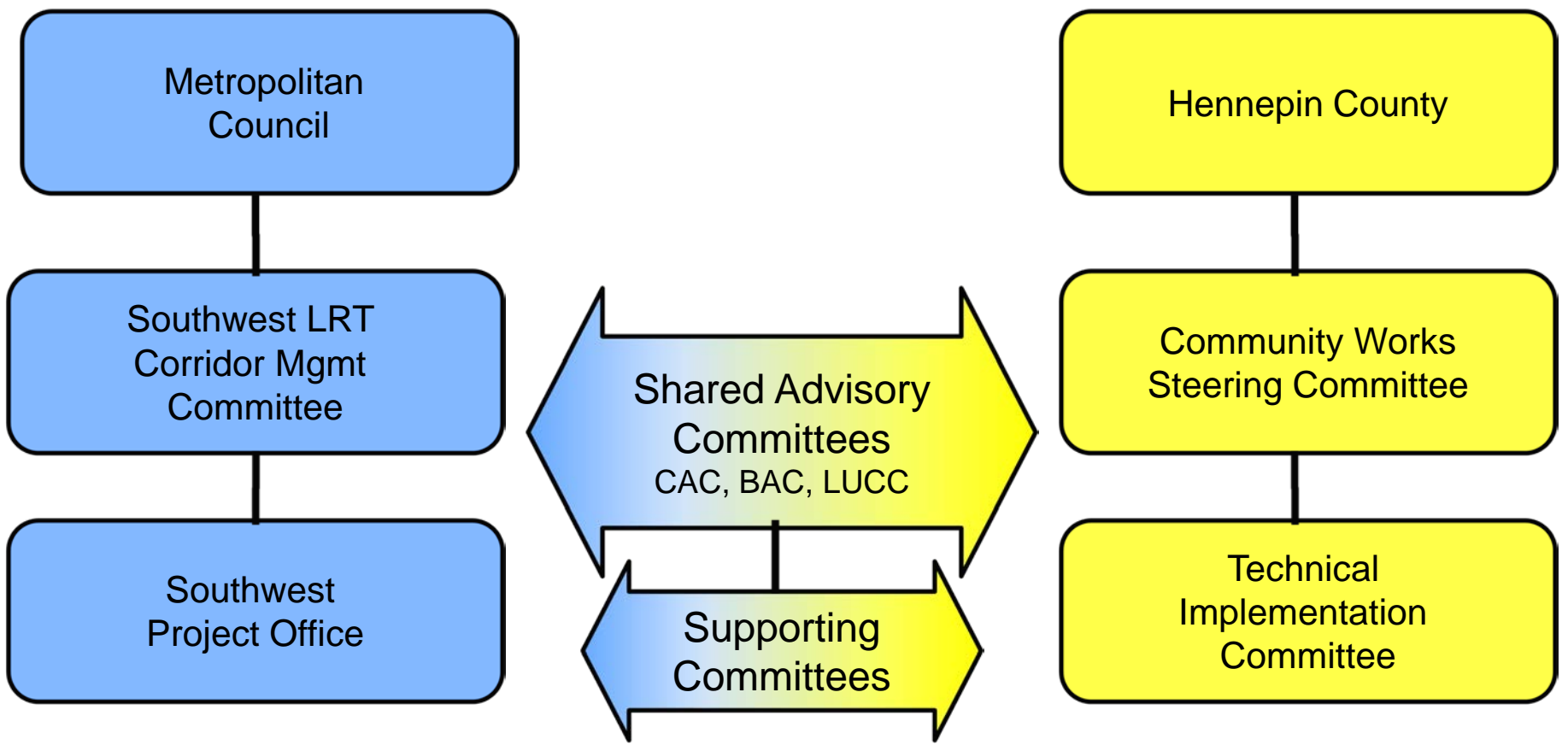


Introductions

- Co-Chairs
 - Jennifer Munt, Metropolitan Council District 3
 - Jeanette Colby, Kenwood Isles Area Assoc.
- Members
 - Name
 - Organization
 - Interests



Southwest LRT Committee Structure





Roles and Responsibilities

- Advise Corridor Management Committee on key issues
- Facilitate public participation
- Provide feedback to the project



Purpose

- Serve as a voice for community
- Advise policy committees
- Provide input on station location, design, and construction
- Provide input on station area vision
- Identify impacts related to construction and operation of the light rail line
- Identify strategies to mitigate construction impacts
- Serve as information resource and liaison



Roles and Responsibilities

- Serve as a voice for community
- Advise policy committees
- Provide input on station location, design, and construction
- Provide input on station area vision
- Identify impacts related to construction and operation of the light rail line
- Identify strategies to mitigate construction impacts
- Serve as information resource and liaison



Accountability

- Attend a majority of meetings
- Be a voice to advance the broader interests of community
- Report back to entity represented
- Actively participate in discussions
- Provide feedback on communication and public involvement efforts
- Listen to and respect the viewpoints of others.
- Accept outcome of decisions



REPORTING REQUIREMENTS

- The Southwest CAC has reporting responsibilities to both the Southwest LRT Management Committee and the Southwest LRT Community Works Steering Committee.
- In addition, the CAC will have a representative from their membership serving as member of the Southwest LRT Management Committee and the Southwest LRT Community Works Steering Committee.



Membership

- Serve 1-year term, reconfirmation on annual basis
- Represent diverse interests and stakeholders
- Replace members if they are no longer able to participate



Next Meeting

- Thursday, May 10, 2012, 6:00 pm
 - Overview of the Southwest LRT project
 - Overview of Community Works program



More Information

Website: www.swlrt.org

Email: swlrt@metrotransit.org