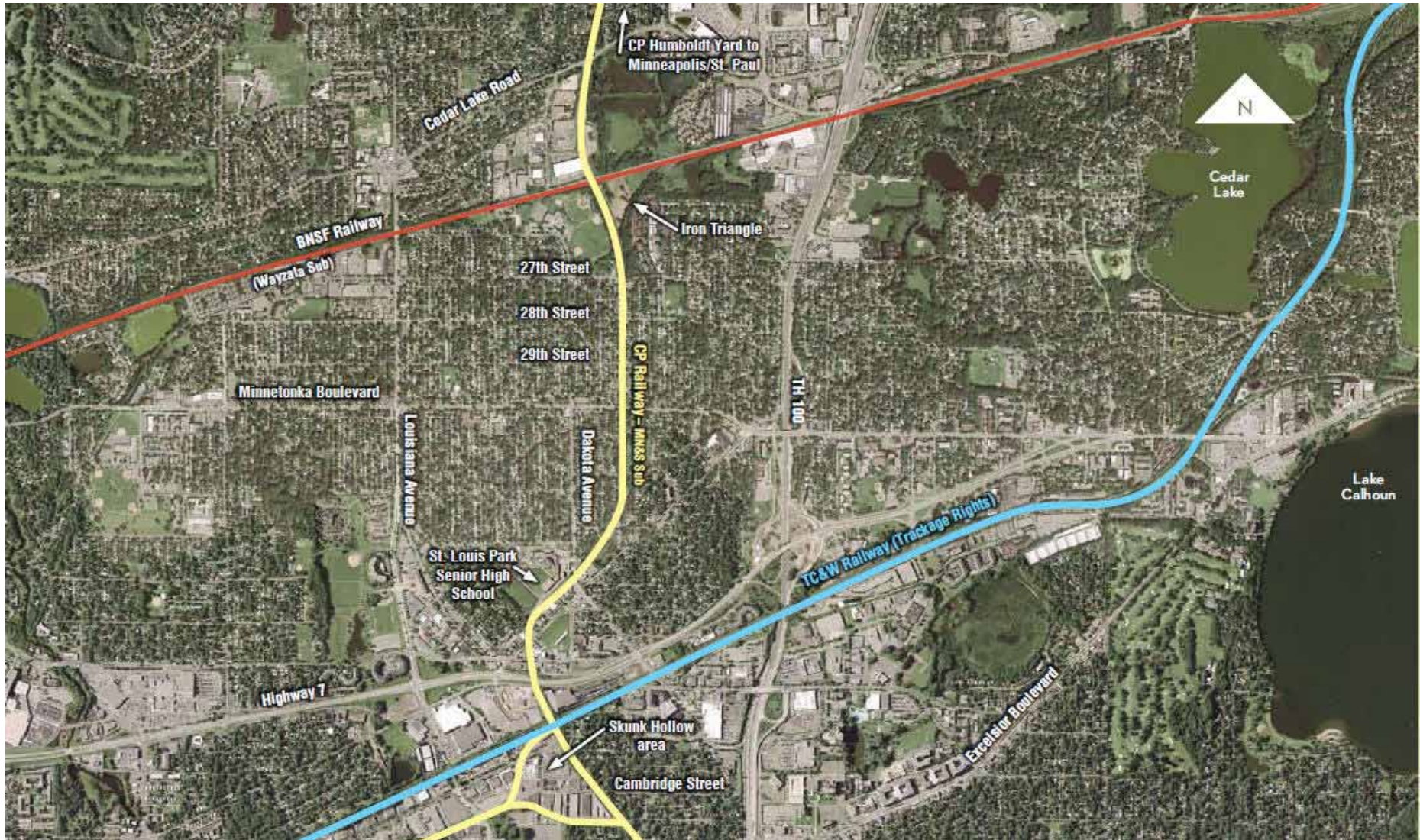


MN&S Freight Rail Study

- Purpose:

To define and evaluate the potential impacts, mitigation measures, and conceptual design along the MN&S line if the current TC&W freight trains operating from the west to St. Paul are to be relocated from the Kenilworth Corridor to the MN&S line

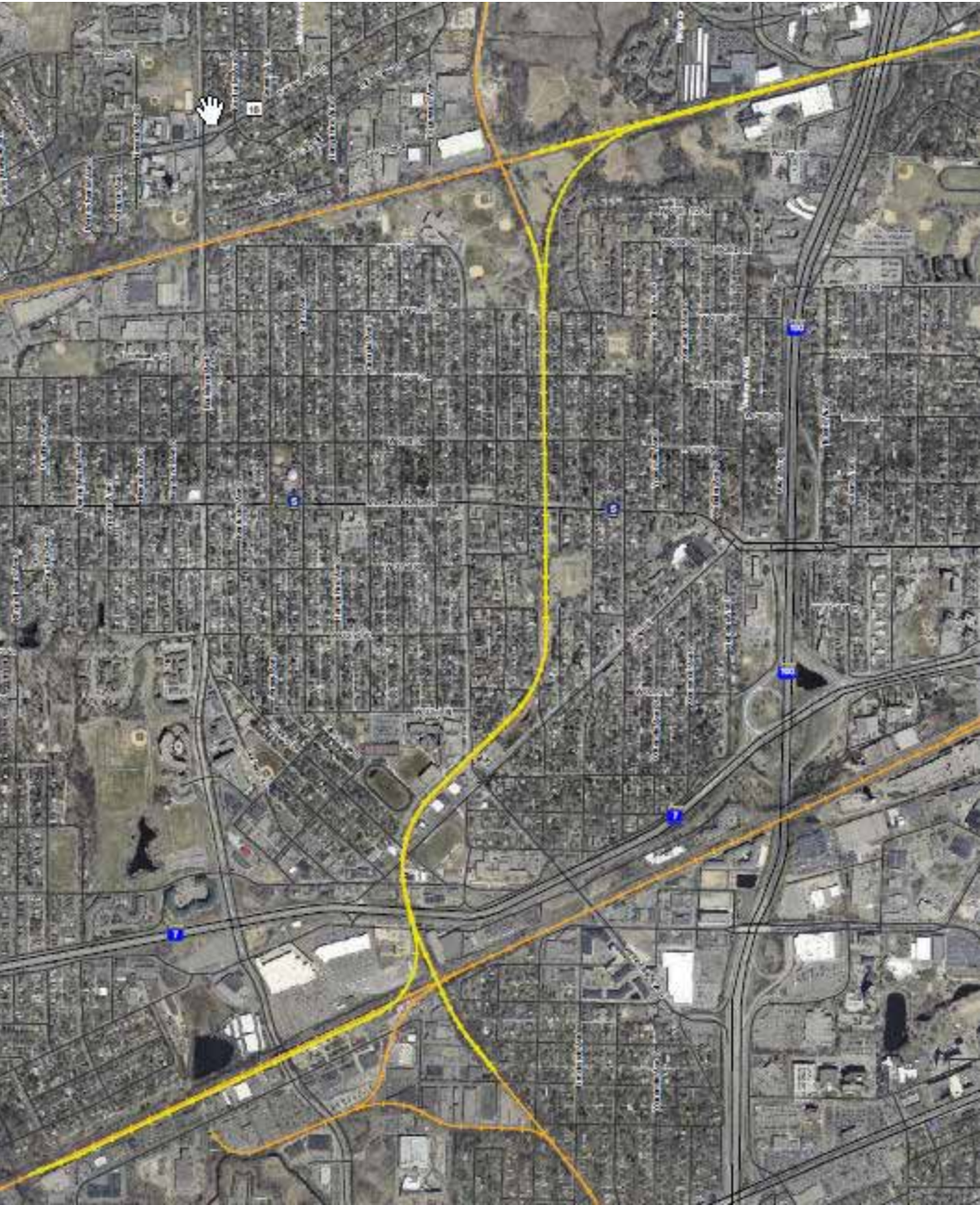


MN&S Freight Rail Study

- Community Impact Assessment
- Conceptual Engineering
- Estimated Cost
- Environmental Assessment Worksheet

MN&S Freight Rail Study

- Project Management Team:
 - Mn/DOT, HCRRA, St. Louis Park
 - TCW, CP, BNSF
 - St. Louis Park neighborhood groups
 - School Board
 - Safety in the Park
 - Business Representatives



MN&S Conceptual Design

MN&S Freight Rail Study

- Estimated Cost = \$76.7 M (2011 dollars)
- EAW
 - Quiet Zone
 - Upgrade of 90 lb rail to 136 lb rail
 - Continuously welded rail
 - Wetland replacement
 - Continued coordination with agencies on community assessments (potential pedestrian grade separations at high school, overhead flashers, impacts on unique property, etc.)

MN&S Freight Rail Study

- Next Steps:
 - Open House on June 8, 2011
 - EAW comment period ends June 15, 2011
 - Responsible Government Unit (Mn/DOT) makes environmental determination