



# Corridor Management Committee

November 12, 2014



# Today's Topics

- Corridor Management Committee Introductions
- Corridor Management Committee Draft Charter
- FTA New Starts Program Overview
- Staff Introductions
- Project Overview
- Outreach Overview



# **Corridor Management Committee Member Introductions**



# Corridor Management Committee Draft Charter



# Corridor Management Committee

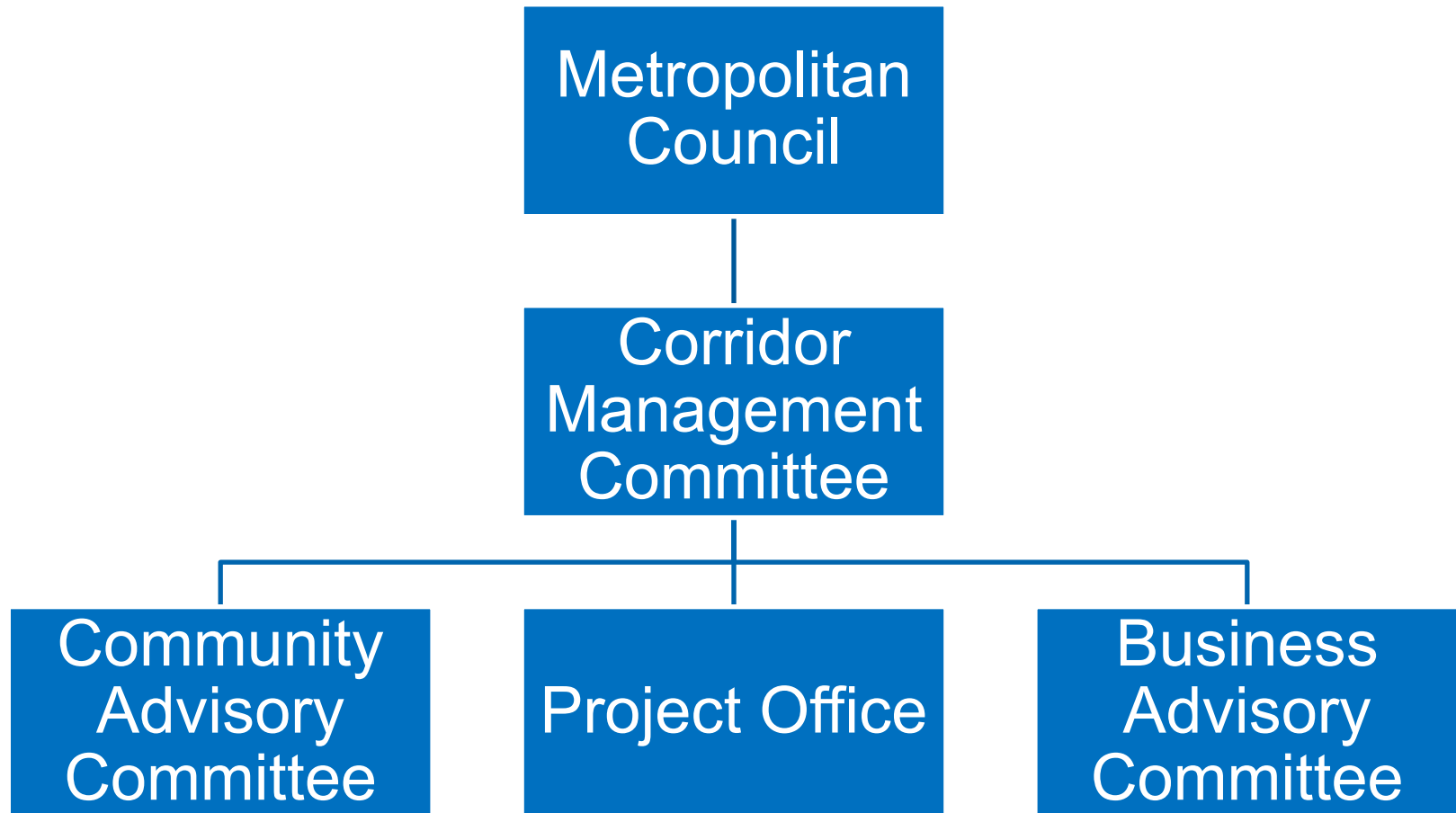
The CMC will advise the Chair of the Metropolitan Council on the design and construction of the METRO Blue Line Extension. The CMC may act by resolution to provide such advice.

Issues the Committee will address include, but will not be limited to:

- Environmental review
- Project development
- Engineering
- Final design
- Construction



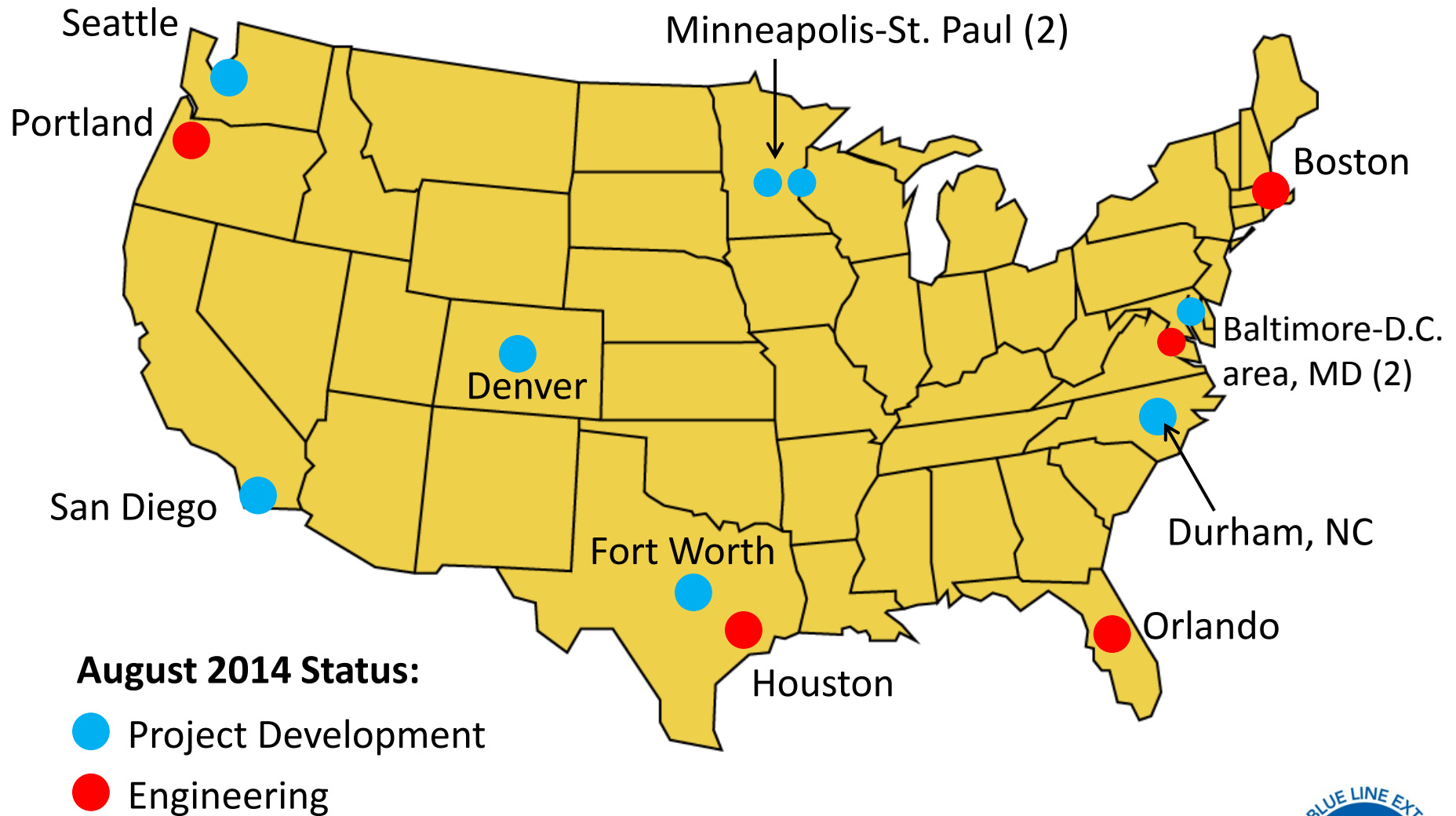
# Advisory Committees



# FTA New Starts Program

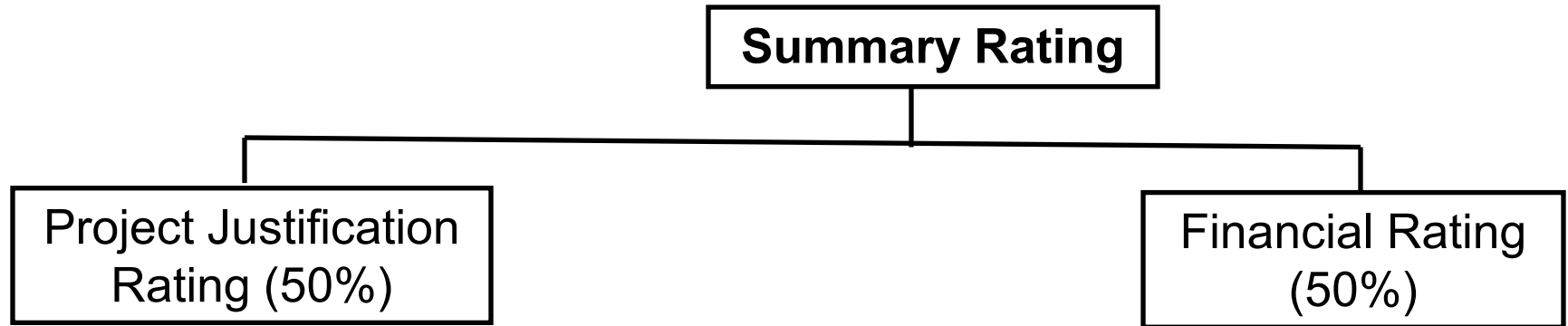


# Peer New Starts Projects

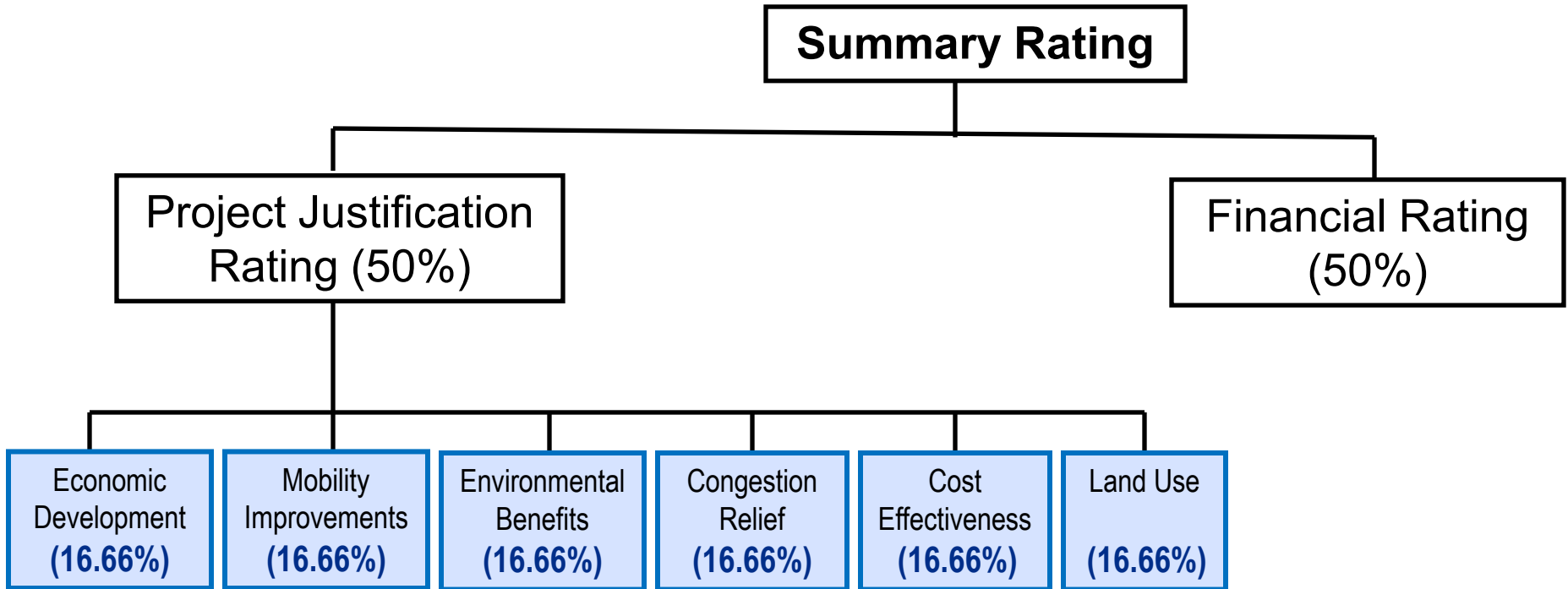




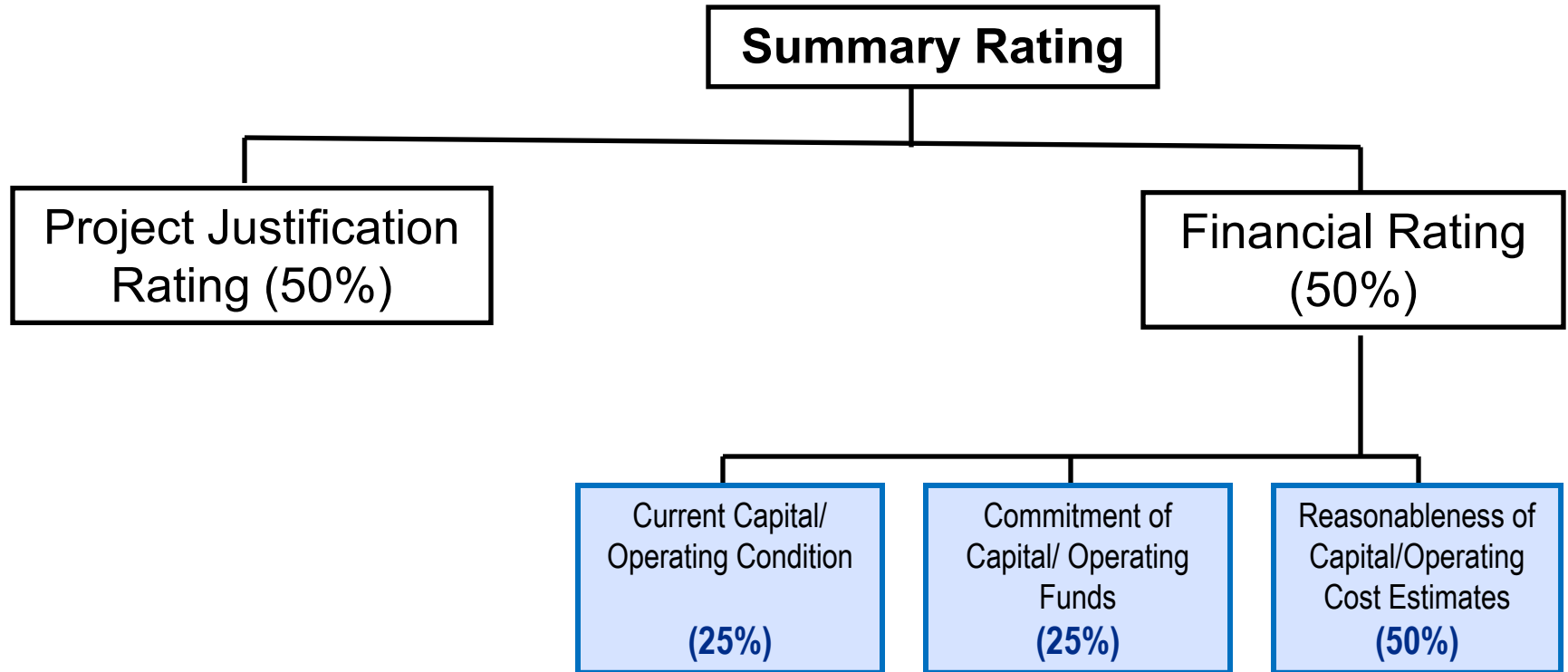
# New Starts Rating Components



# New Starts Rating Components



# New Starts Rating Components



# Project Timeline

2014-2016

- Project Development

2016

- Environmental/Municipal Consent

2017

- Engineering

2018

- Full Funding Grant Agreement

2018-20

- Heavy Construction

2021

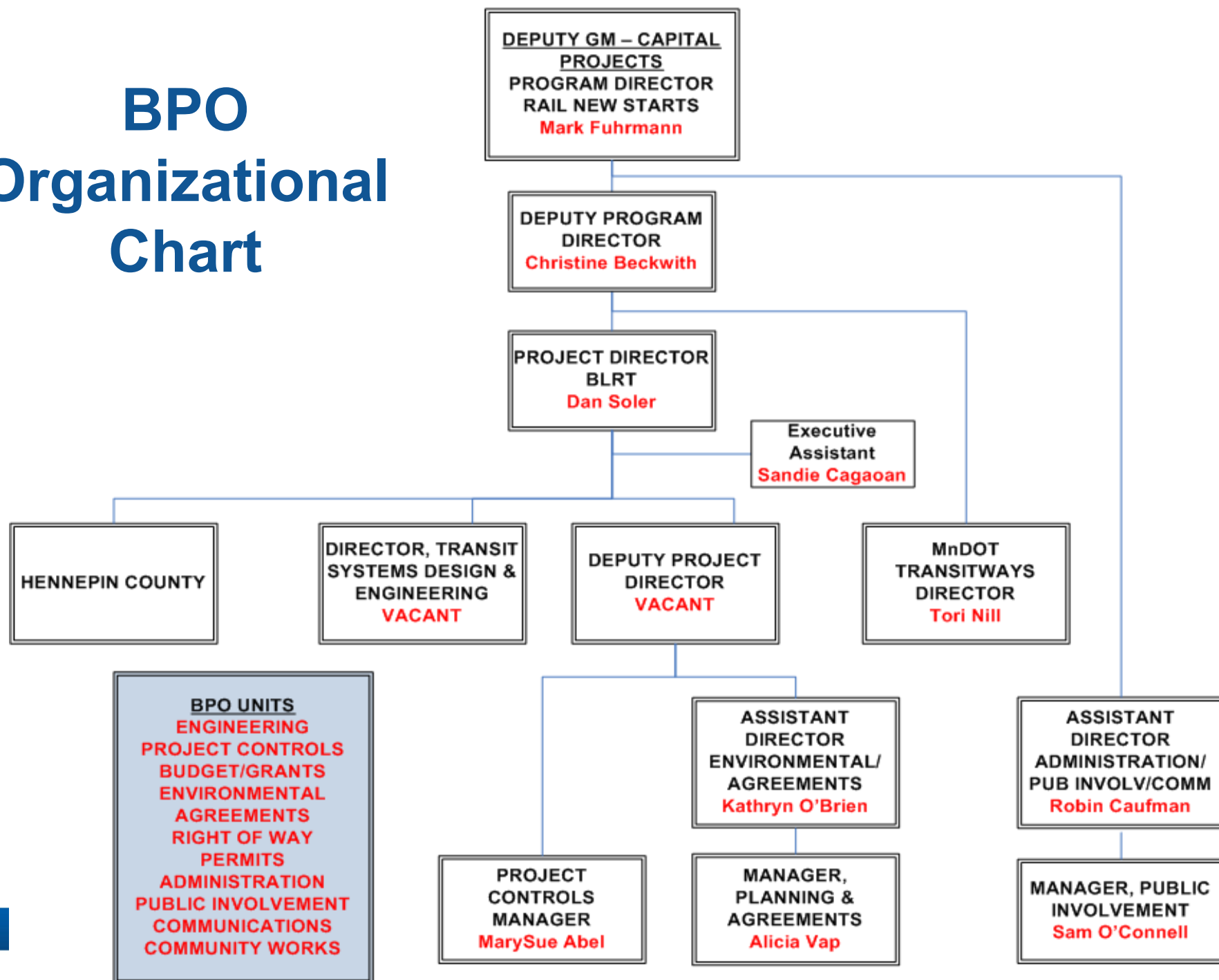
- Passenger Operations



# Staff Introductions



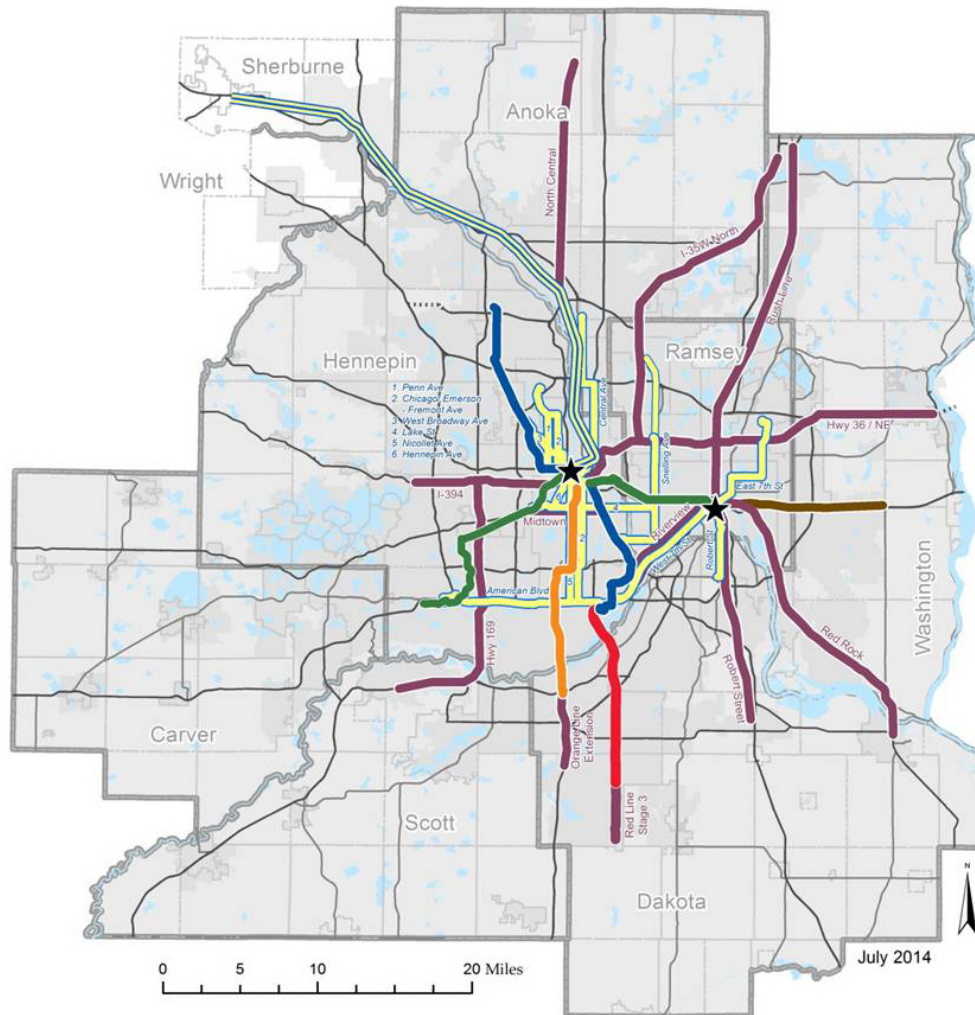
# BPO Organizational Chart










# Project Overview



# Twin Cities Transitways: 2040 Vision

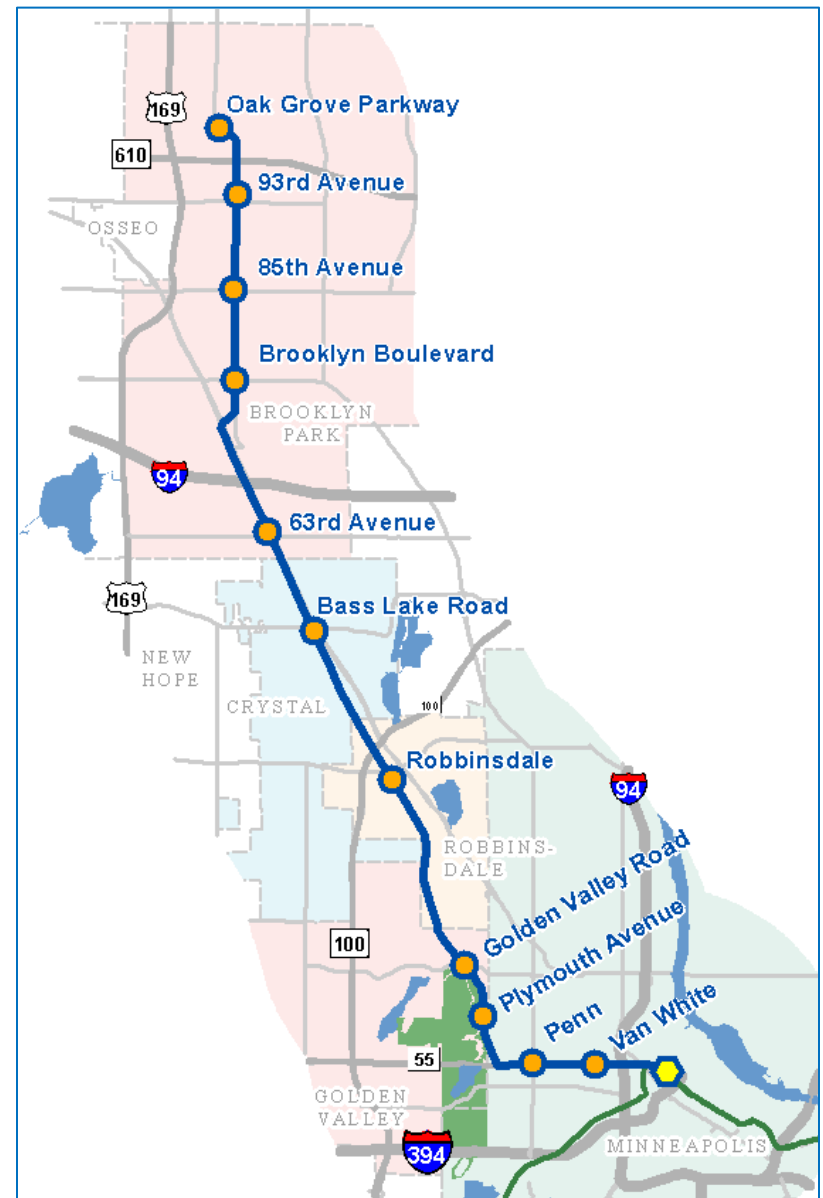


-  Northstar Line
-  Blue Line
-  Green Line
-  Red Line
-  Orange Line
-  Gateway Dedicated BRT \*
-  Accelerated Arterial BRT
-  Accelerated Transitways under study
-  Regional Multimodal Hub

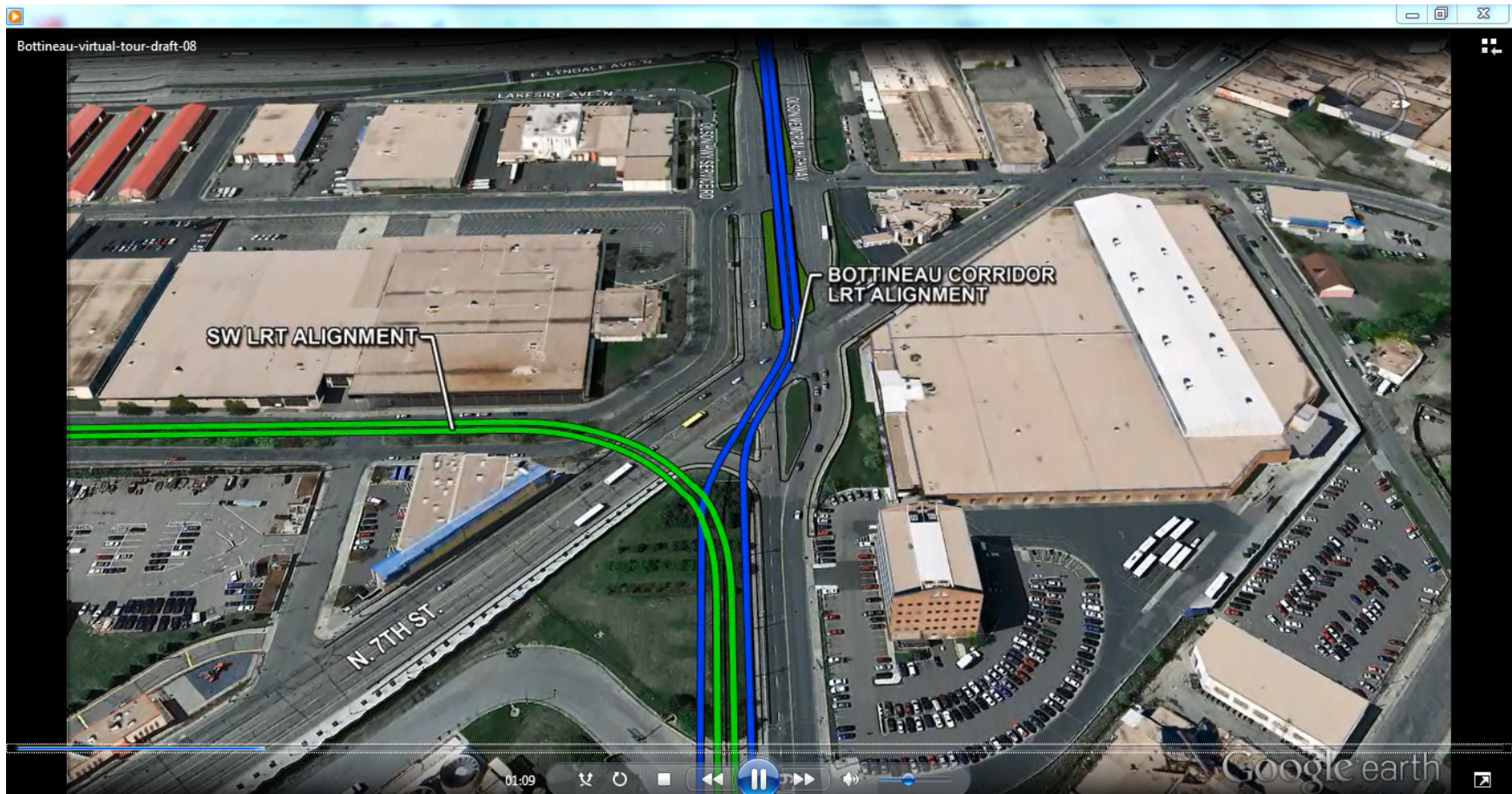


# Project Description

- 13 miles of double track
- 10 or 11 new stations
- Serving Brooklyn Park, Crystal, Robbinsdale, Golden Valley & Minneapolis
- Provides one seat Blue Line ride to MSP and MOA
- Connections to METRO Green Line, Northstar and bus services

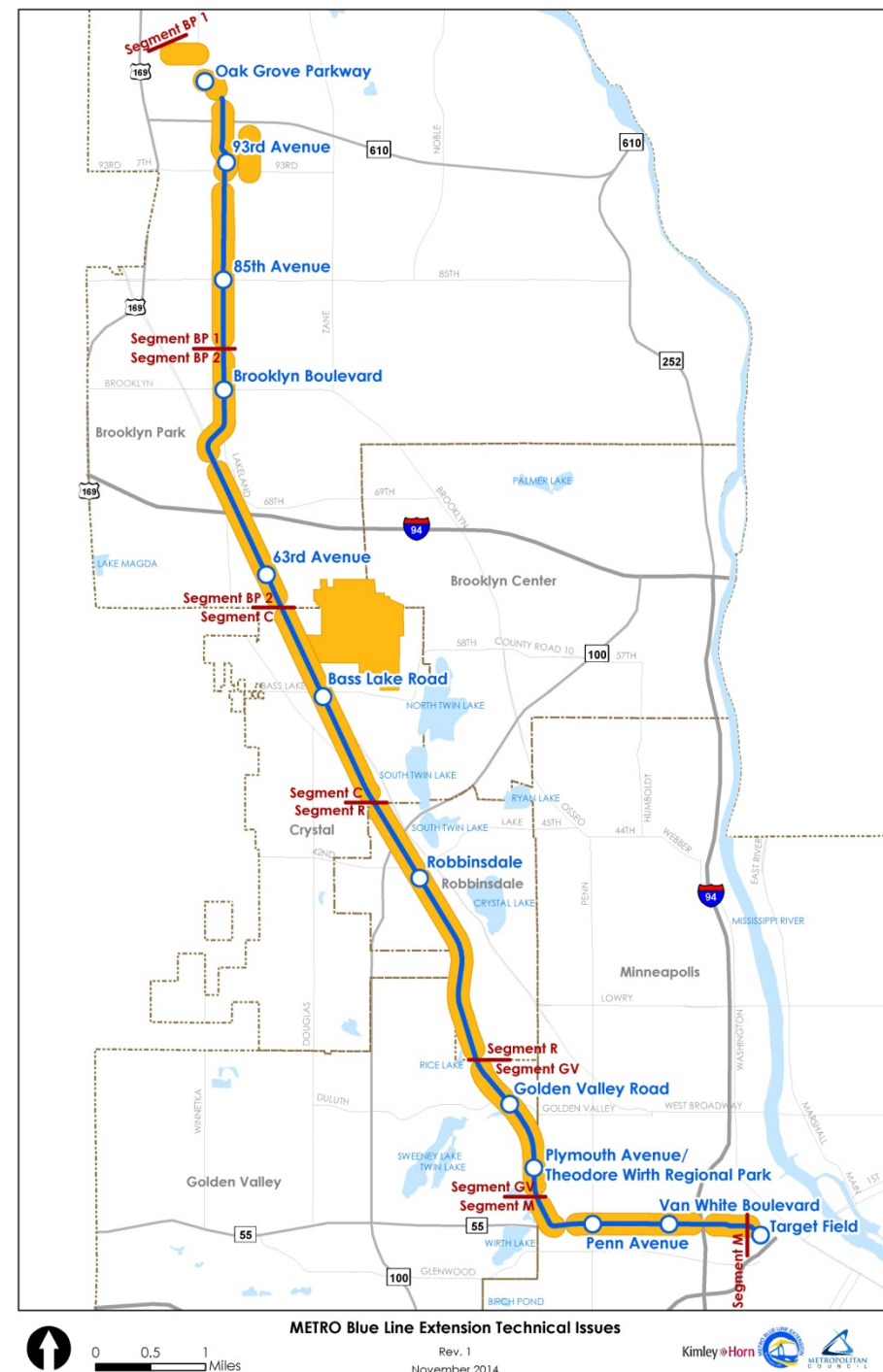


# Project Visualization



# Project Development Activities

- Issue Resolution Teams
  - Track alignment
  - Station locations
  - Operation & maintenance facility design



# Project Development Activities

- Environmental review process
- Municipal consent
- Local funding commitments
- Project office



# Environmental Review Process

2013

- LPA adopted by Met Council
- Draft EIS preparation

2014

- Draft EIS published
- Draft EIS comment period

2015

- Complete Environmental Analysis

2016

- Final EIS published / Record of Decision (ROD) issued



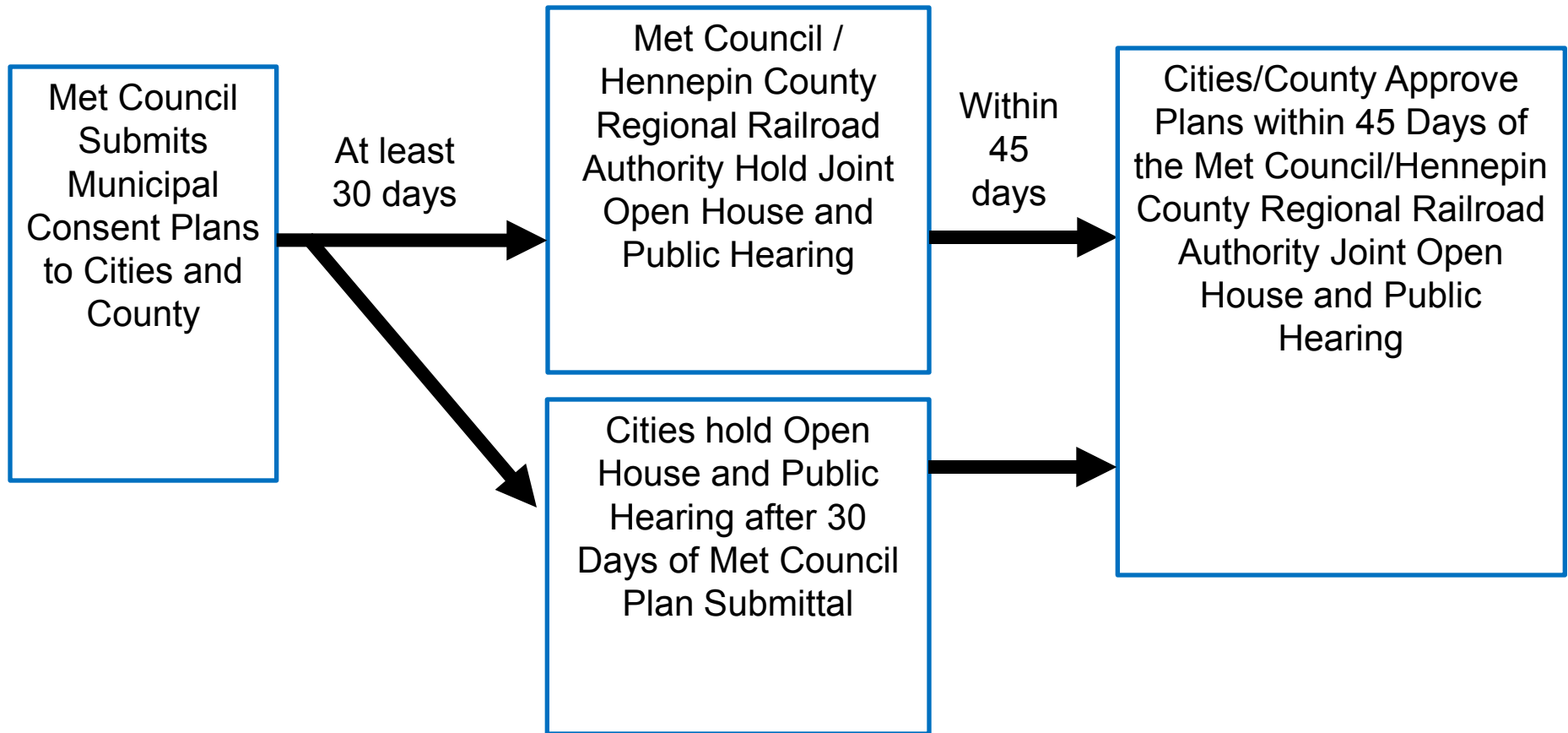


# Municipal Consent Process

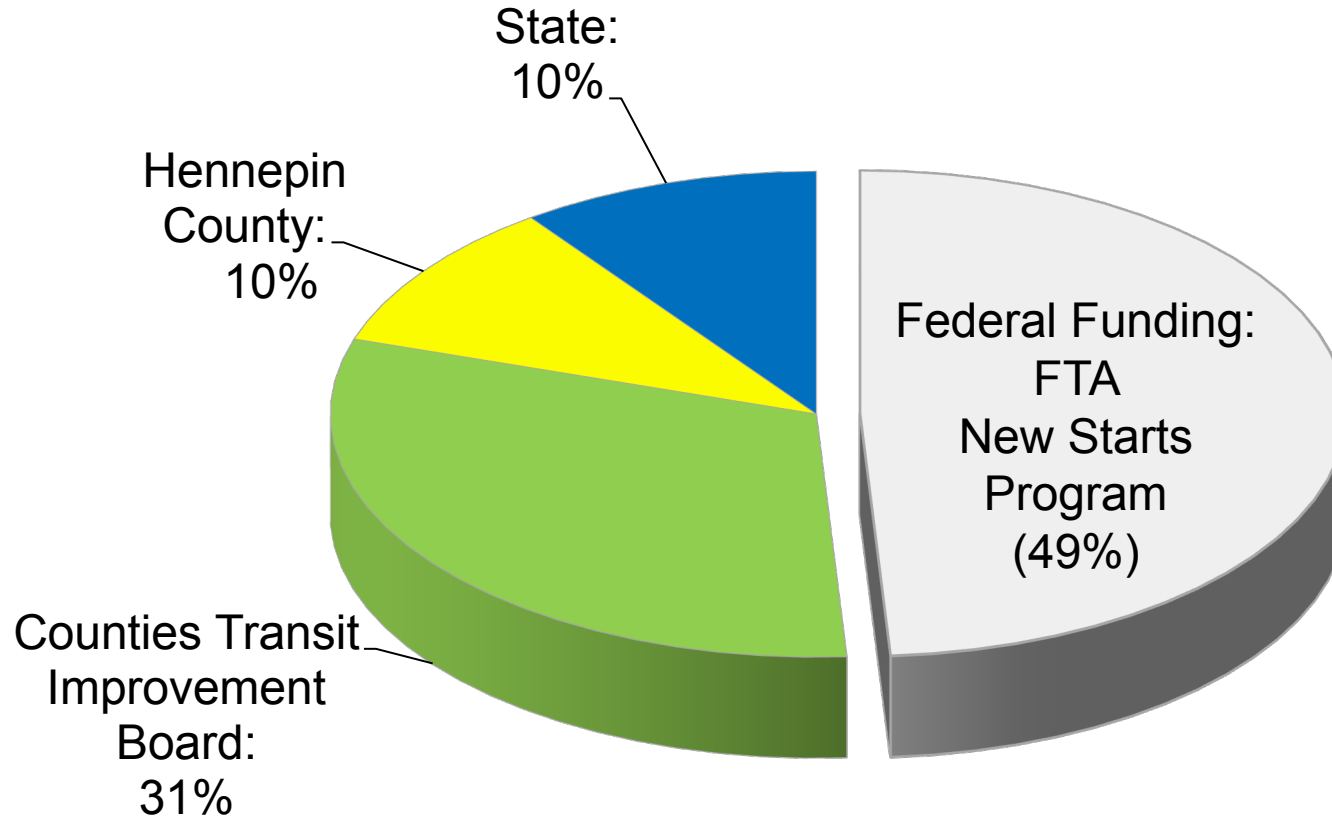
- Minnesota Statute 473.3994
- City and County review and approve physical design components of preliminary design plans
  - Location of LRT track
  - Identification of LRT systems elements
  - Location/layout of stations and station access
  - Location/layout of park and ride facilities
  - Location of pedestrian/bike trail impacted by Project
  - Layout of roadway features
  - Turn lanes, lane widths, traffic signals
  - Location/layout of Operations & Maintenance Facility (OMF)
  - Location of freight rail track



# Municipal Consent Process



# Local Funding Commitments



Estimated Cost: \$1 Billion





# Project Office

- Bass Lake Road & West Broadway
- 20,000 sq ft
- Selection criteria
  - Proximity to Blue Line Extension alignment
  - Transit access
- Move in Q1 2015



# Engineering Phase Activities

- Station design & selection of public art for station areas
- Property acquisition
- Final design & engineering
- Final cost estimate
- Revised risk assessment
- Freight rail reconstruction
- Construction Invitation for Bids
- LRV procurement



# Outreach Overview

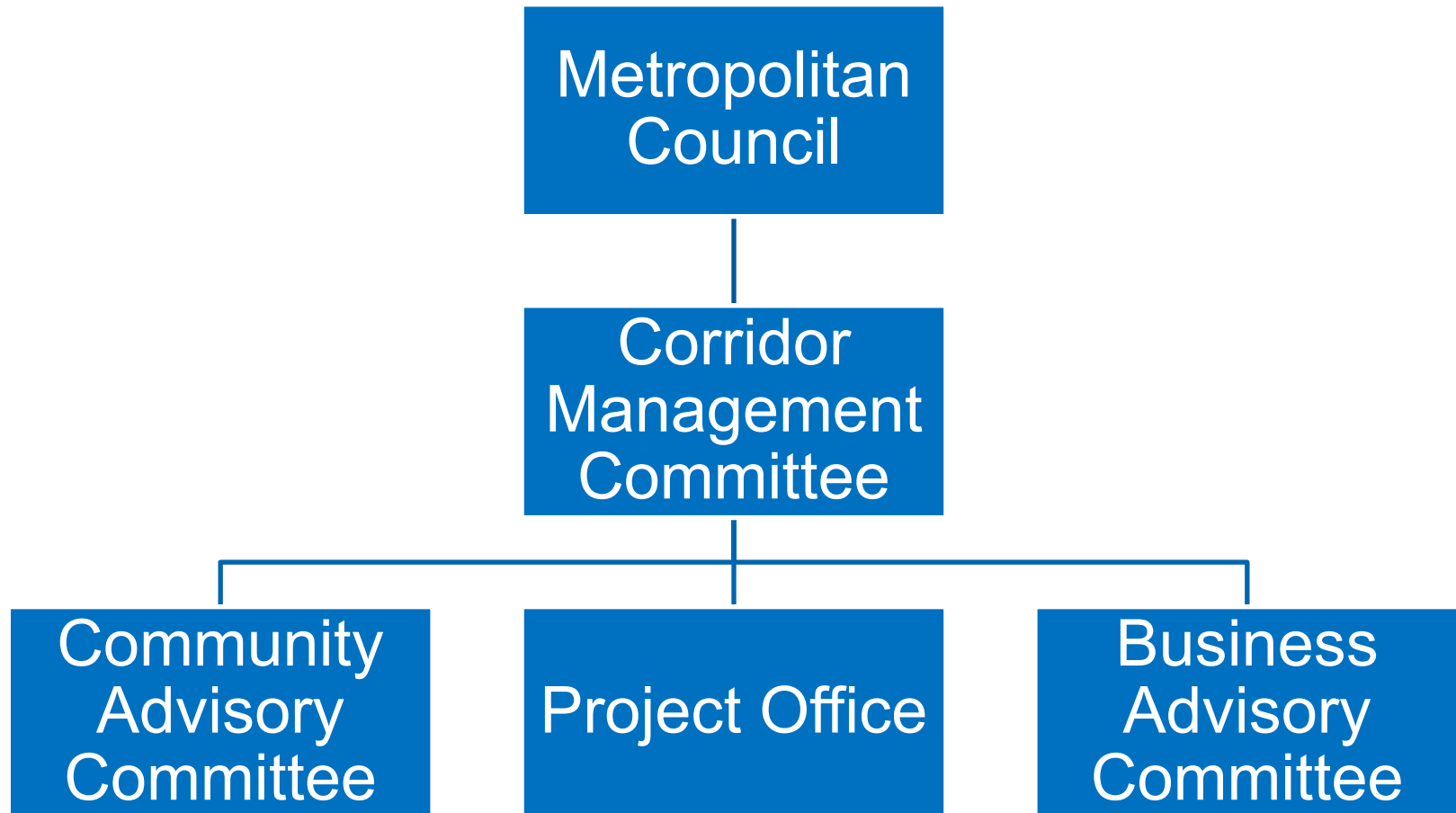


# Outreach and Engagement Activities

- Outreach staff
- Public meetings
  - Tailored formats
  - One to 500 participants
- Project website, newsletter, twitter/Facebook
- Direct e-mail
- Other materials




# Advisory Committees






# More Information

About Us | News & Events | Data & Maps | Publications | Doing Business | Council Meetings | Contact Us | Employment



COMMUNITIES | PARKS | **TRANSPORTATION** | WASTEWATER & WATER | HOUSING | PLANNING



METRO BLUE LINE EXTENSION

Route

Stations

Environmental

Timeline

Project Partners

## METRO BLUE LINE EXTENSION

### Bottineau Transitway – Minneapolis & Northwestern Communities

The METRO Blue Line Extension (LRT) will operate northwest from downtown Minneapolis through north Minneapolis, Golden Valley, Robbinsdale, Crystal and Brooklyn Park, drawing riders northwest of Brooklyn Park. The proposed alignment is primarily at-grade and will have up to 11 new stations in addition to Target Field Station and about 13 miles of double track. The line will interline with the METRO Blue Line and connect Minneapolis and the region's northwest suburbs with existing LRT on the METRO Green Line, future LRT on the METRO Green Line Extension, bus rapid transit on the METRO Red Line, the Northstar commuter rail line and local and express bus routes.

Latest News

Feds: Met Council can begin designing METRO Blue Line Extension


Route

Click on the map below for more information

Website: [BlueLineExt.org](http://BlueLineExt.org)

Email: [BlueLineExt@metrotransit.org](mailto:BlueLineExt@metrotransit.org)

Twitter: [#bluelineext](https://twitter.com/bluelineext)



30