



# Joint Business and Community Advisory Committee Meeting

April 15, 2015



# Today's Topics

- Welcome & Introductions
  - § BAC & CAC Introductions
- Project Overview and Staff Introductions
- Role, Responsibilities and Resources
- Hennepin County Community Works Update
- 2015 Look Ahead
  - § Design and Engineering
  - § Environmental
  - § Public Involvement
- Questions and Answers



# **Welcome from Metropolitan Council Chair Adam Duininck**



# Business and Advisory Committee Introductions

- Name and community
- Committee membership
- What does success of the Blue Line Extension look like?

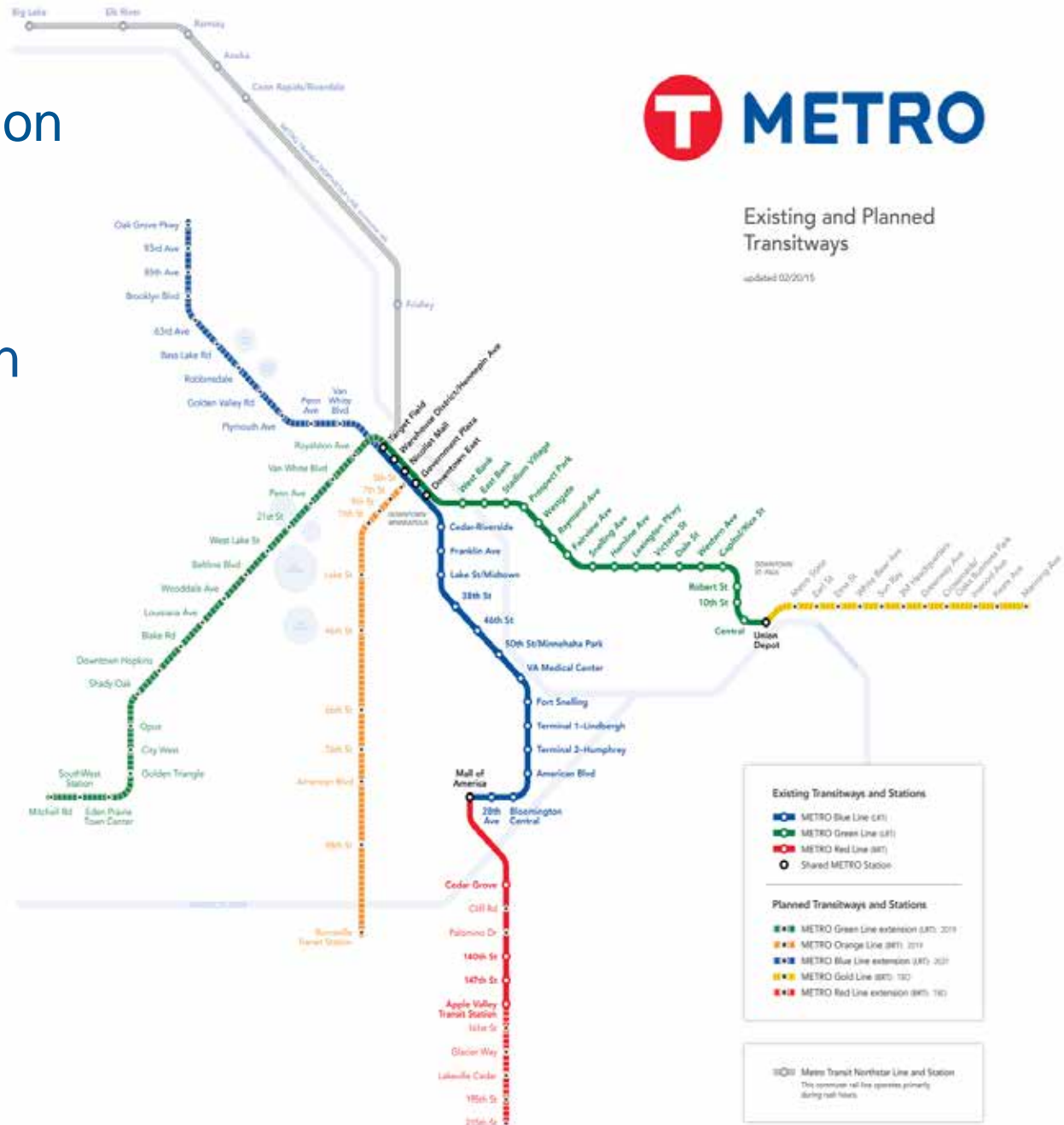


# Project Overview and Staff Introductions



# METRO System

- Green Line Extension (Southwest LRT)
- Blue Line Extension (Bottineau Corridor LRT)
- Orange Line (I-35 W South Bus Rapid Transit)



# Project Description

- 10 or 11 new LRT stations
- 13 miles of double track
- 27,000 est. rides by 2030
- Serving Brooklyn Park, Crystal, Robbinsdale, Golden Valley & Minneapolis
- Provides one seat Blue Line ride to MSP Airport and Mall of America
- Connections to METRO Green Line, Northstar and bus services



# What is Light Rail Transit (LRT)?

- High capacity
- Quick acceleration & braking
- Powered by electricity
- Quiet operation
- Frequent service 21 hours/day
- Stops every  $\frac{1}{2}$  - 1 mile





# LRT Design Elements: Station and Tracks



# Current Fares

Transit Mode	Fare
Light Rail & Local Bus	\$1.75 \$2.25 (peak period)
Express Bus	\$2.25 \$3.00 (peak period)
Northstar	\$3.00 - \$6.00 depending on station

**\$180 fine for riding trains or buses without paying**





# Pedestrian & Bike Elements: Crossings



Countdown timer



Truncated domes mark crosswalk



Sign marks crosswalk and alerts drivers



Tactile button and audible tones announce when crossing is permitted



# Safety Features



Warning devices alert pedestrians to approaching trains and signs instruct people to look both ways.



# Security Features

- Open and transparent station design to promote visibility



Security camera



Emergency phone



# Project Timeline

2014-2016

- Project Development

2016

- Environmental/Municipal Consent

2017

- Engineering

2018

- Full Funding Grant Agreement

2018-20

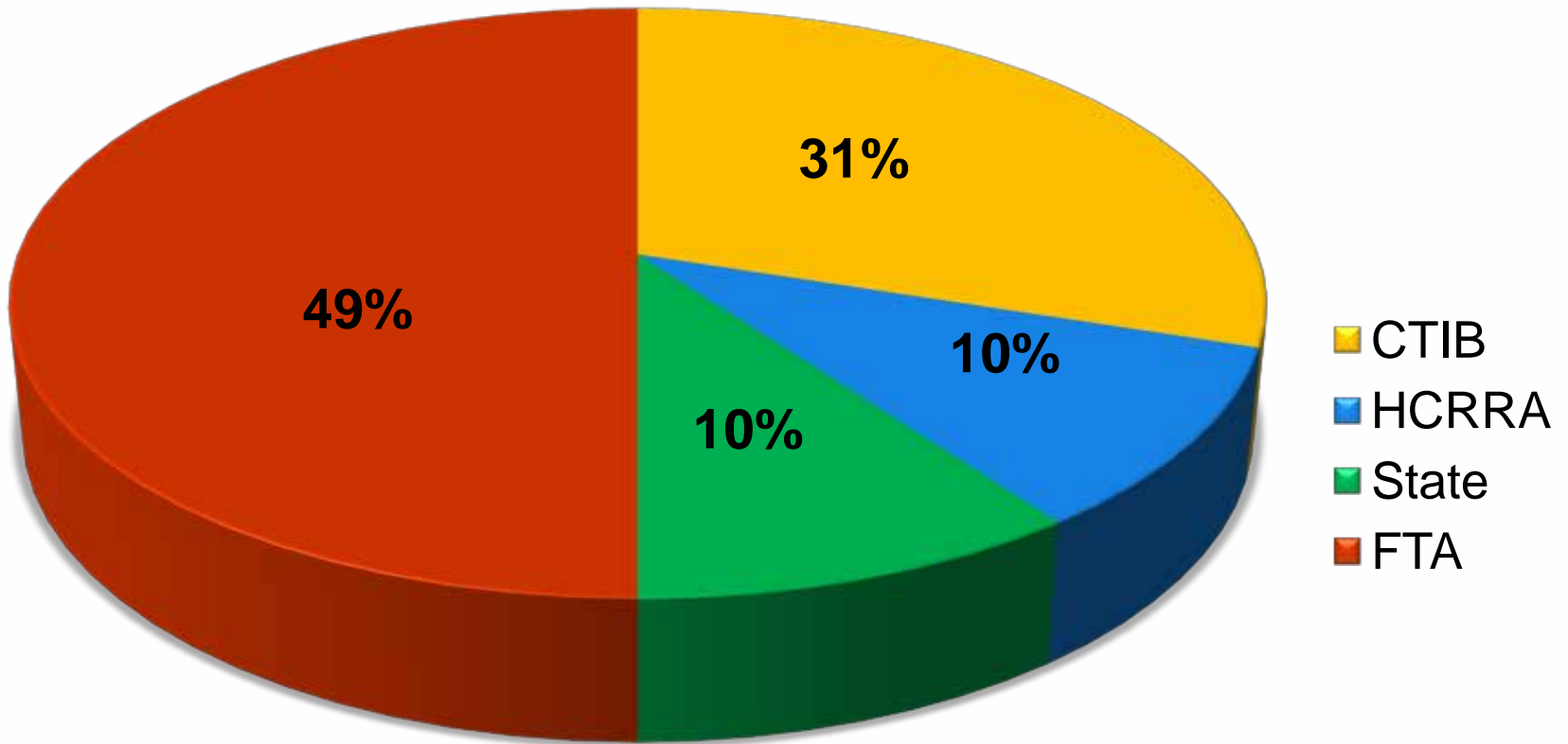
- Heavy Construction

2021

- Passenger Operations



# Project Funding



**Estimated Cost: \$1 Billion**



# How Does Decision-making Occur?

Issue  
Resolution  
Teams  
(IRT)

Technical  
Project  
Advisory  
Committee  
(TPAC)

Business and  
Community  
Advisory  
Committees  
(BAC/CAC)

Corridor  
Management  
Committee  
(CMC)

Met Council

## Issue Resolution Process



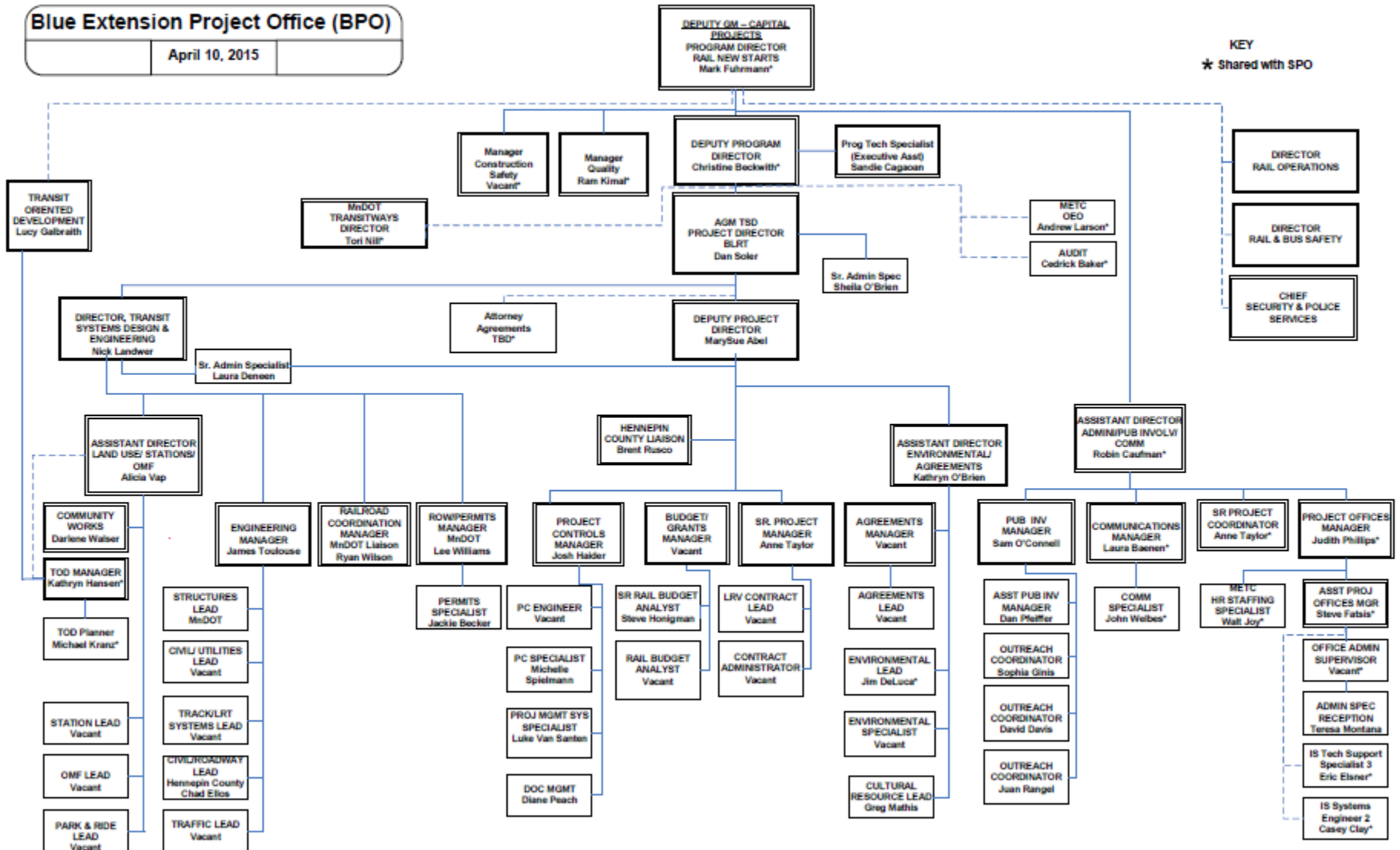


# BPO Organizational Chart (see handout)

## Blue Extension Project Office (BPO)

April 10, 2015

KEY  
★ Shared with SPO



# Project Office

- Bass Lake Road & West Broadway
- 20,000 sq ft
- Location of monthly advisory committee meetings



# BLRT Aerial Video

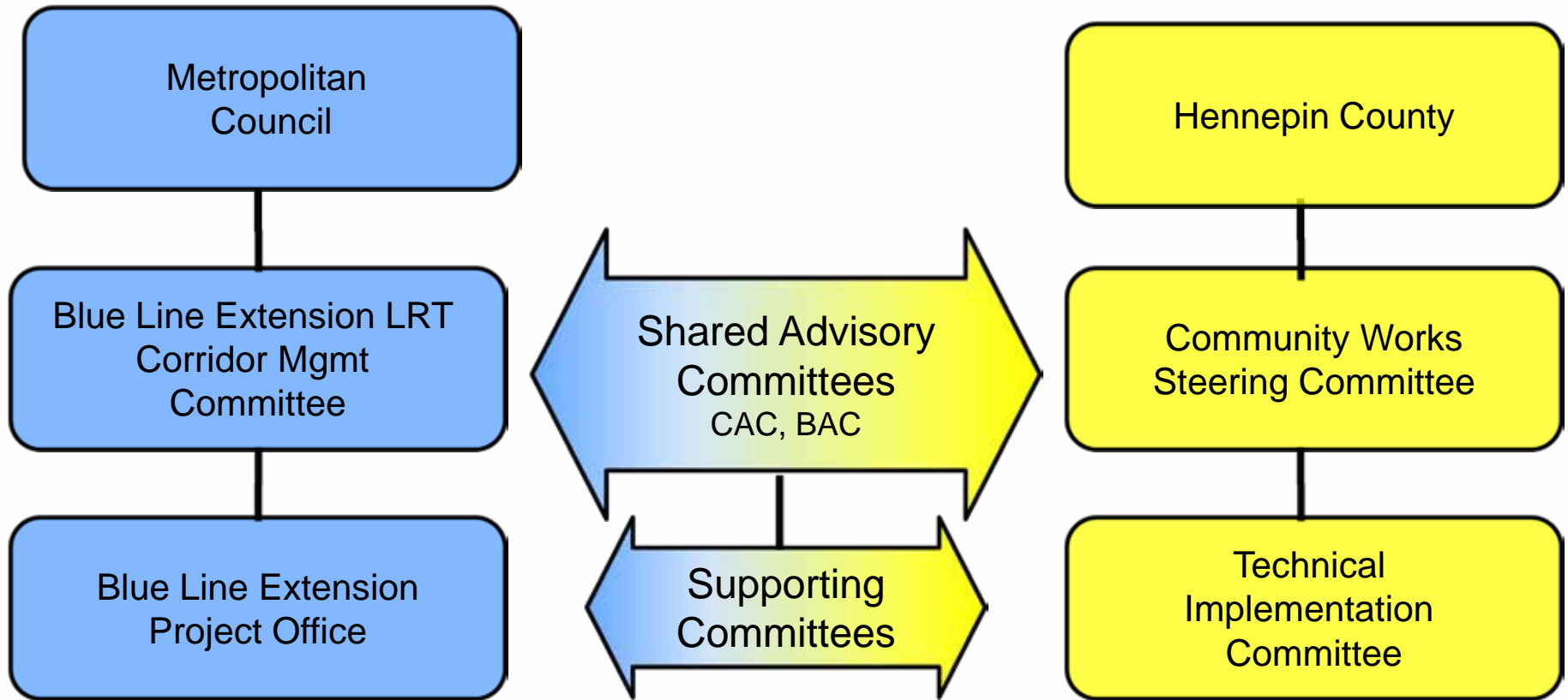


# **Roles, Responsibilities and Resources**





# Advisory Committees

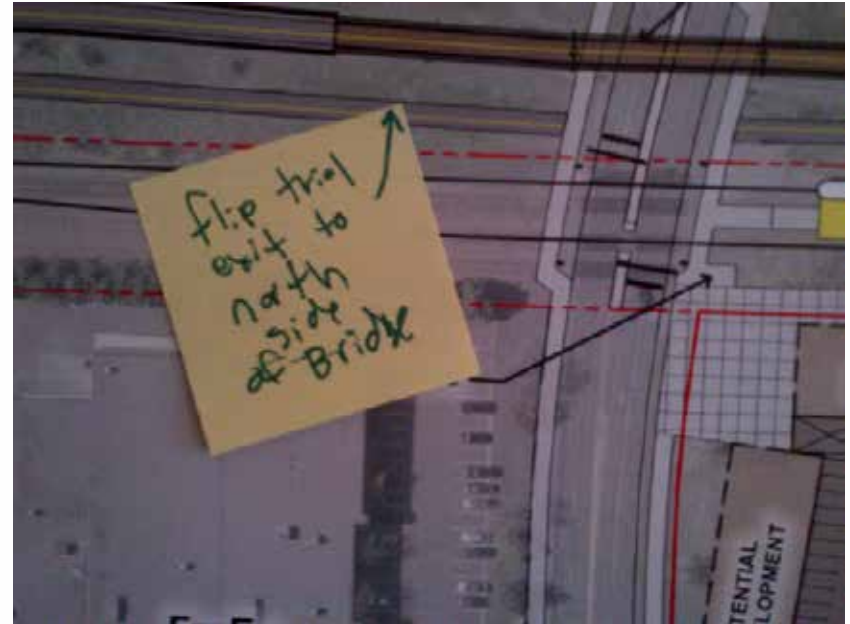


# Business and Community Advisory Committees

- Serve as a voice for the community
- Advise Corridor Management and Community Works Steering Committees
- Provide input on design: stations, operations and maintenance facility, bike, pedestrian, and park-and-ride facilities
- Serve as information resource and liaison to the community



# Business and Community Advisory Committees



Advisory committee discussion and input



# Accountability

- Serve a 2-year term and attend meetings
- Actively participate in discussions; be a voice to advance the broader interests of community
- Report back to entity represented
- Provide feedback on communication and public involvement efforts
- Listen to and respect the viewpoints of others
- Accept outcomes of Met Council decisions





# Advisory Committee Leadership

- Co-Chair appointments:
  - § Corridor-wide perspective
- Co-Chair roles/responsibilities:
  - § Lead committees through their tasks and ensure charter compliance
  - § Identify topics/issues of committee concern
  - § Develop meeting agendas with BPO and Hennepin County staff



# BPO and Hennepin County Staff

- Identify topics/issues for advisory committee feedback and CMC/CW Steering Committee guidance
- Develop meeting agendas with Advisory Committee Co-chairs
- Distribute agendas and meeting summaries
- Post committee presentations/meeting materials on [BlueLineExt.ORG](http://BlueLineExt.ORG)



# CAC Membership

- Community appoints members:
  - §Minneapolis: 3 members
  - §Golden Valley: 2 members
  - §Robbinsdale: 2 members
  - §Crystal: 2 members
  - §Brooklyn Park: 3 members
  - §Minneapolis Park and Recreation Board: 2 members
- Corridors of Opportunity Engagement Grantees: 10
- At-large representation appointed by Met Council and Hennepin County Community Works: 2



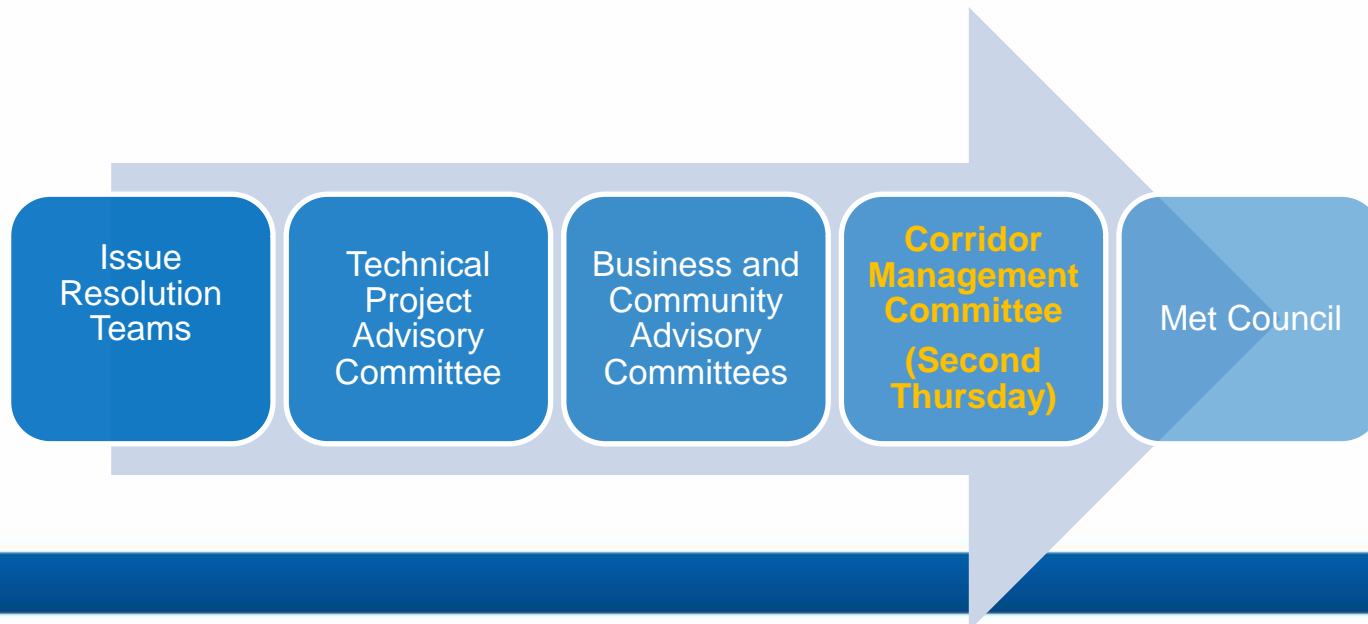
# BAC Membership

- Community appoints 2 members each:
  - § Minneapolis
  - § Golden Valley
  - § Robbinsdale
  - § Crystal
  - § Brooklyn Park
- Chambers of Commerce appoint 1 member each:
  - § Minneapolis Regional
  - § TwinWest
  - § Robbinsdale
  - § North Hennepin Area
- At-large representation appointed by Met Council and Hennepin County Community Works: 3



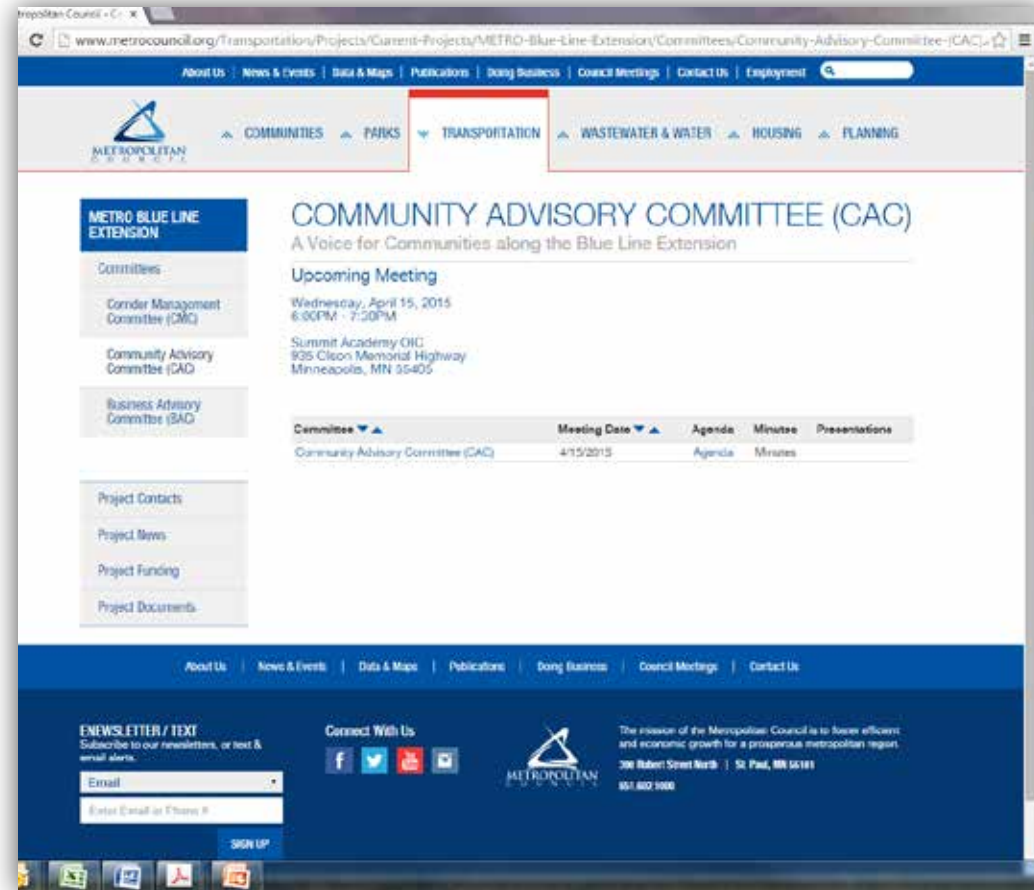
# Advisory Committee Meetings

- First week of the month:
  - § Business Committee: 7:30 AM – 9:00 AM, M/T/W
  - § Community Committee: 6:00 PM – 8:00 PM, M/T/W/Th
  - § +/- 30 minutes
- Will send SurveyMonkey poll to members to identify best meeting time



# Committee Resources

- Website:
  - § Committees Pages:
    - agendas
    - meeting summaries
    - presentations
  - § E-newsletter
  - § Text and/or email alerts
  - § One-pagers
  - § Maps/plans
  - § Documents



## BlueLineExt.org



# **Hennepin County Community Works Overview**



# HENNEPIN COUNTY

## BOTTINEAU CORRIDOR COMMUNITY WORKS



Community Advisory Committee  
Business Advisory Committee  
April 15, 2015







**Stimulate  
economic  
development**







**Strengthen  
and connect  
people and  
places**







**Innovate and  
advance  
sustainability**





**Enhance the  
tax base**



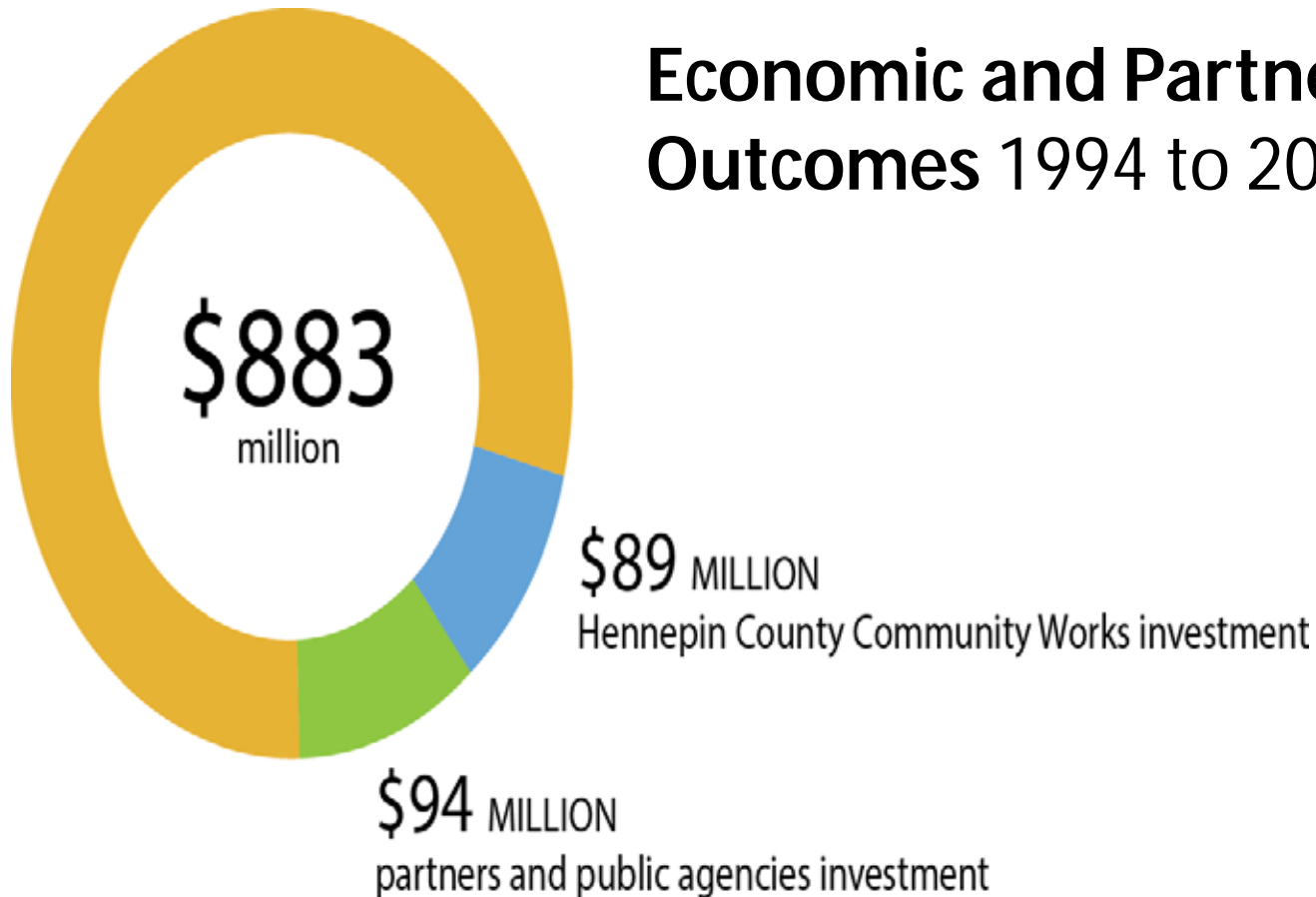




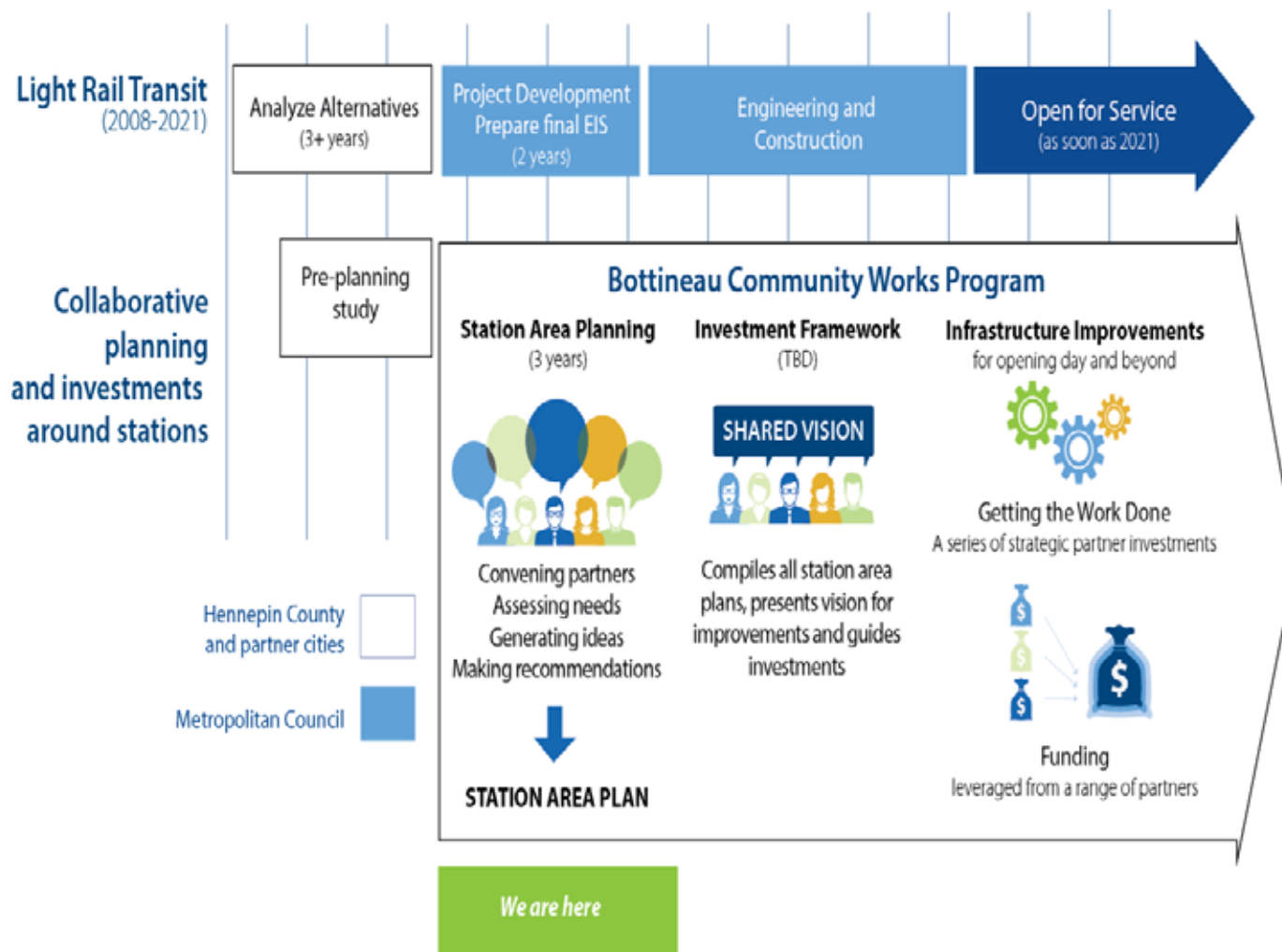
**Lead  
collaborative  
planning and  
implementation**



## Economic and Partnership Outcomes 1994 to 2014



# Bottineau LRT Community Works





# Station Area Planning

- » What is it?
- Community-based planning for the area surrounding a proposed transit station
- ½ mile radius or about a 10 minute walk





# Station Area Planning

## » Transit supportive plans that look at:

- Public spaces, including streets and trails
- Access and circulation (bike, walk, car, bus)
- Land use
- Types and character of buildings



# Station Area Planning & Health Equity

- » Improves community health and advances health equity
  - By addressing stark health disparities in communities of color and among low-income people
- » Makes healthy choices easy
  - By planning for housing, transportation options, jobs, parks, land uses/activities that are safe, accessible and affordable to all



# Station Area Planning

- » Hennepin County in partnership with each of the five cities
- » Eleven stations
- » Phase 1:
  - Four stations in Golden Valley and Minneapolis
- » Phase 2:
  - Five Brooklyn Park stations
  - One Robbinsdale station
  - One Crystal station



# 2015 Look Ahead



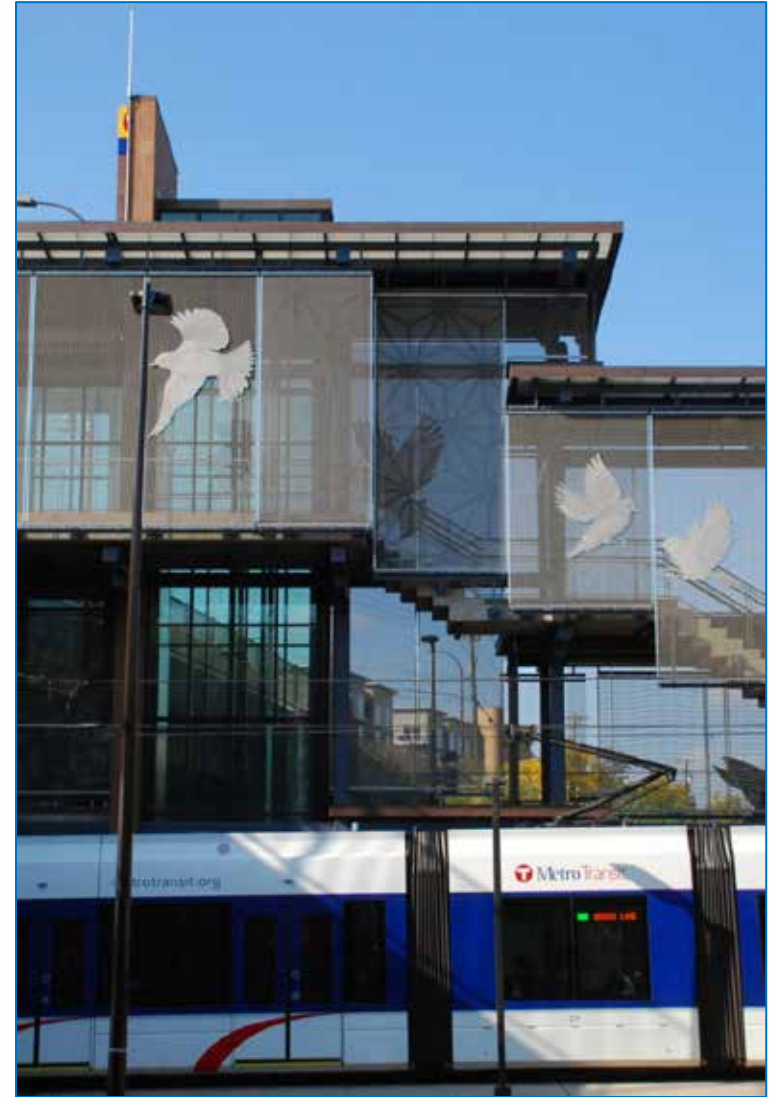
# Design and Engineering



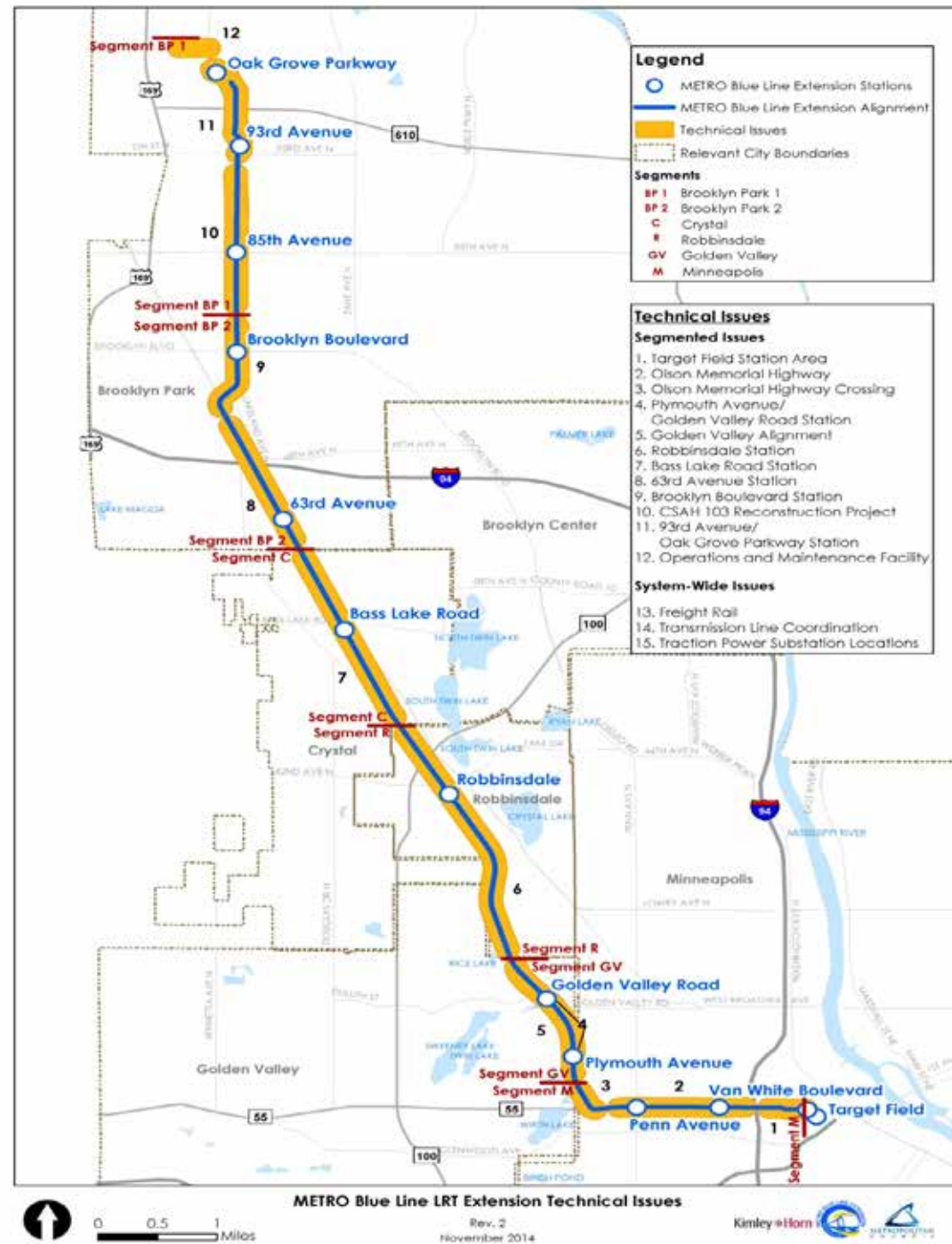


# Engineering Phase Activities

- Station design & selection of public art for station areas
- Property acquisition
- Final design & engineering
- Final cost estimate
- Revised risk assessment
- Freight rail reconstruction
- Construction Invitation for Bids
- LRV procurement



# Technical Issues



# Minneapolis

Seg- ment	Technical Issue	Sub Issues	Schedule
M-1	Target Field Station Connection	7 <sup>th</sup> Street Intersection Design	Q3 2015
M-2	Olson Memorial Highway	I-94 Interchange Operations	Q3 2015
		Design Treatment	
		Penn Ave Intersection operations	
		Median Tree Impacts	
M-3	Olson Memorial Highway Crossing	Right-of-way Pinch Point	Q3 2015
		Bassett Creek Floodplain Impacts	
		Poor Soils through Watershed	



# Golden Valley

Segment	Technical Issue	Sub Issues	Schedule
GV-4	Plymouth Ave/Golden Valley Road Station	Station Location	Q2 2015
		Parking	
GV-5	Golden Valley Alignment	Bassett Creek Floodplain Impacts	Q2 2015
		Poor Soils	
		Theo. Wirth Park Property Impacts	



# Robbinsdale

Segment	Technical Issue	Sub Issues	Schedule
R-6	Robbinsdale Station	Park and Ride, Bus Transit Hub	Q3 2015
		At-Grade Crossing at 39 ½ - 40 <sup>th</sup>	
		Grade Separated Pedestrian Crossings of LRT Tracks	
		Traffic Impacts at 42 <sup>nd</sup> Ave Crossing	
		Noise and Visual Impacts	





# Crystal

Segment	Technical Issue	Sub Issues	Schedule
C-7	Bass Lake Road Station	Station access via all modes	Q2 2015
		Quiet zone for at-grade crossings	
		Parking/drop off areas	
		Vera Cruz/West Broadway Intersection	



# Brooklyn Park

Segment	Technical Issue	Sub Issues	Schedule
BP2-8	63 <sup>rd</sup> Ave Park & Ride	Park & Ride Expansion	Q2 2015
BP2-9	Brooklyn Blvd Station	73 <sup>rd</sup> Ave Crossing	Q2 2015
BP1-10	CSAH 103/West Broadway Reconstruction Project	Coordination with Hennepin Co reconstruction project	Q2 2015
		Traffic Impacts	
		Operating Assumptions	
BP1-11	93 <sup>rd</sup> Ave/Oak Grove Parkway Station	Park and Ride	Q2 2015
		Station configuration	
BP1-12	OMF	Site configuration	Q3 2015



# System Wide

Segment	Technical Issue	Sub Issues	Schedule
13	Freight Rail	Design Issues	Q3 2015
		ROW Acquisition Identification	Q4 2015
14	Transmission Line Coordination	Location and Support Structures for Xcel HVTL	Q3 2015
15	Traction Power Substation	Locations	Q3 2015



# Environmental



# Environmental Review Analyzes Potential Impacts

- Land use
- Community
- Property
- Business
- Historic properties
- Parks
- Visual
- Safety
- Transportation
- Water resource
- Soils
- Plants
- Animals
- Noise
- Vibration
- Contaminated sites
- Air quality





# Environmental Review Process

2013

- LPA adopted by Met Council
- Draft EIS preparation

2014

- Draft EIS published
- Draft EIS comment period

2015

- Complete Environmental Analysis

2016

- Final EIS published / Record of Decision (ROD) issued



# Environmental Update

- Coordination with key agencies is underway:
  - § Minneapolis Park and Recreation Board
  - § Three Rivers Park District
  - § State Historic Preservation Office
  - § United States Army Corps of Engineers
  - § MN Dept of Natural Resources
  - § Wetlands Conservation Act entities (LGUs)
- Environmental coordination with engineering
  - § Focused on completion of tech memos distributed to corridor stakeholders late 2015: noise, wetlands, floodplains, etc.



# Public Involvement



# Outreach and Engagement Activities

- Outreach staff
- Public meetings
  - § Tailored formats
  - § One to 500 participants
- Project website, newsletter, twitter/Facebook
- Direct e-mail
- Other materials



# Outreach and Engagement Activities



# Community Outreach Coordinators

- What to expect:
  - § Available to answer questions and relay feedback
  - § Regular contact regarding process and project progress
  - § Transparency
- Two-way communications:
  - § Call or email with questions, ideas and concerns
  - § Share ideas about stakeholders we should meet





# Questions and Answers



# More Information

About Us | News & Events | Data & Maps | Publications | Doing Business | Council Meetings | Contact Us | Employment

METRO BLUE LINE EXTENSION

COMMUNITIES | PARKS | **TRANSPORTATION** | WASTEWATER & WATER | HOUSING | PLANNING

**METRO BLUE LINE EXTENSION**

Route

Stations

Environmental

Timeline

Project Partners

## METRO BLUE LINE EXTENSION

### Bottineau Transitway – Minneapolis & Northwestern Communities

The METRO Blue Line Extension (LRT) will operate northwest from downtown Minneapolis through north Minneapolis, Golden Valley, Robbinsdale, Crystal and Brooklyn Park, drawing riders northwest of Brooklyn Park. The proposed alignment is primarily at-grade and will have up to 11 new stations in addition to Target Field Station and about 13 miles of double track. The line will interline with the METRO Blue Line and connect Minneapolis and the region's northwest suburbs with existing LRT on the METRO Green Line, future LRT on the METRO Green Line Extension, bus rapid transit on the METRO Red Line, the Northstar commuter rail line and local and express bus routes.

**Latest News**  
Feds: Met Council can begin designing METRO Blue Line Extension

**Route**  
Click on the map below for more information

Website/Newsletter: [BlueLineExt.org](http://BlueLineExt.org)

Email: [BlueLineExt@metrotransit.org](mailto:BlueLineExt@metrotransit.org)

Twitter: [@BlueLineExt](https://twitter.com/BlueLineExt)

