



Corridor Management Committee: September 24, 2021



1

Brooklyn Park | Crystal | Robbinsdale | Golden Valley | Minneapolis



Today's Topics

- Public Engagement: What We Heard Summer 2021
- County Road 81 Update Robbinsdale:
 - North Memorial Hospital Station Area
 - Crystal: Bass Lake Road/Crystal Airport
 - Upcoming Community Workshop
- Minneapolis Update
 - Upcoming Community Workshops
- Project Schedule
 - Draft & Final Report Development and Review
- Anti-Displacement Facilitator Selection Update



A service of the Metropolitan Council

COUNTIES *Transit*
Improvement
BOARD

Approve July 15, 2021 Meeting Summary

Committee Reports

- Community Advisory Committee Report
- Business Advisory Committee Report

Public Engagement: What We Heard Summer 2021

July & August Public Engagement

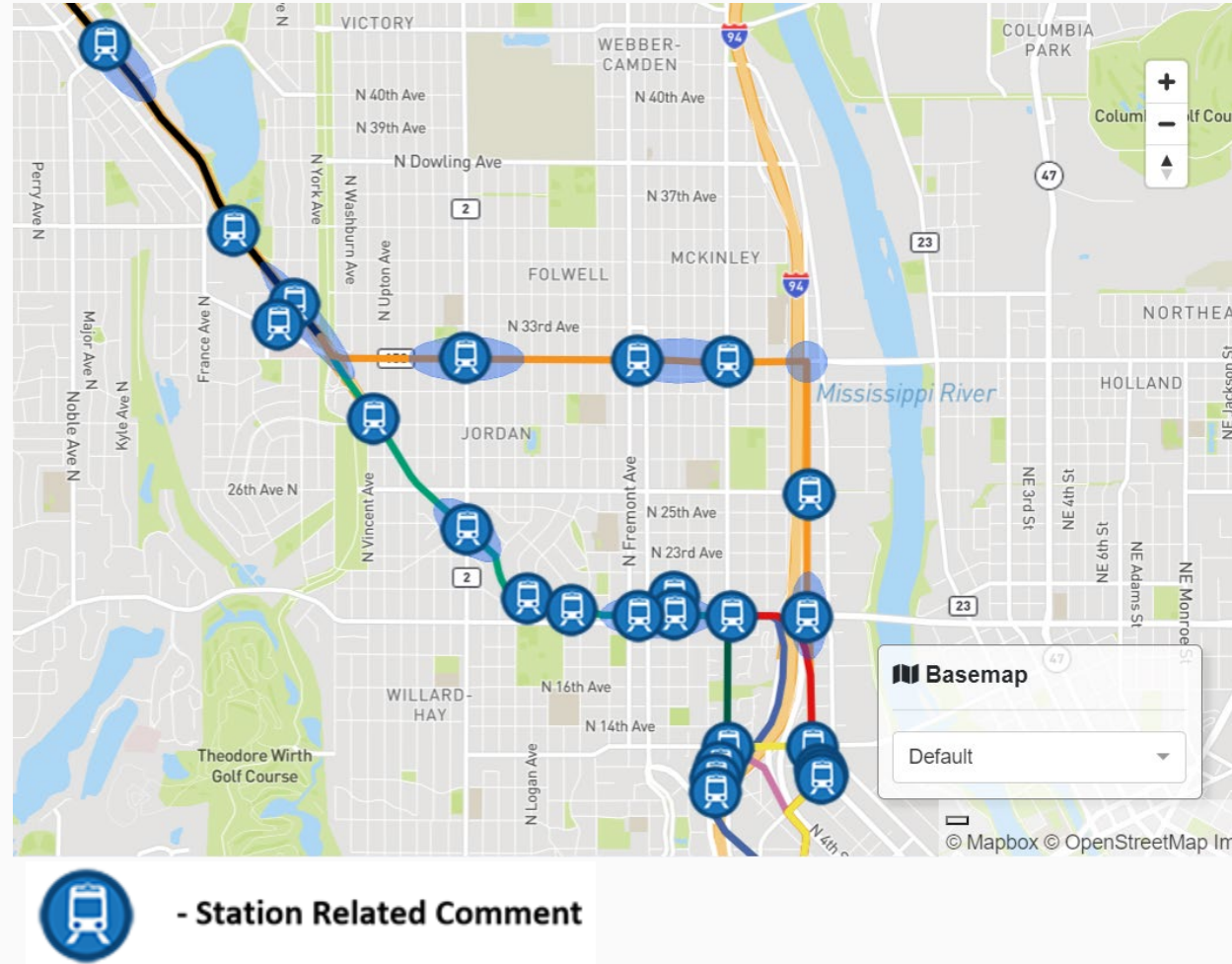
- 45 Public Events
 - 8 Open Houses
 - Other activities included: pop-up events, community event attendance, stakeholder check-ins, co-hosted activities
 - Pop-ins & door knocking increase this total
- Over 2,000 direct points of contact
- 222 comments on interactive map



Think Brooklyns Forum on Inclusive Housing & Aging in Place

Community Feedback: Station Study Areas

- General concurrence with station study areas
- Some comments about closer station spacing in Minneapolis on West Broadway
- Discussion of placement within the study areas



Community Feedback: Visualizations

- Brooklyn Park: Questions about past decisions with station placement, site design, and Park-and-Ride placement
- Crystal: Roadway design, pedestrian connections/safety
- Robbinsdale: Pedestrian safety, traffic flow, community cohesion, connection to Downtown Robbinsdale & North Memorial Hospital, Park-and Ride options
- Minneapolis: Need for more information about turn lanes, station placement, parking, bike accommodations, pedestrian crossings, and potential property impacts including direct/indirect displacement

County Road 81 Update

North Memorial Hospital Station Study Area: Connecting to West Broadway Option 1



North Memorial Hospital Station Study Area: Connecting to West Broadway Option 2



North Memorial Hospital Station Study Area: Connecting to Lowry

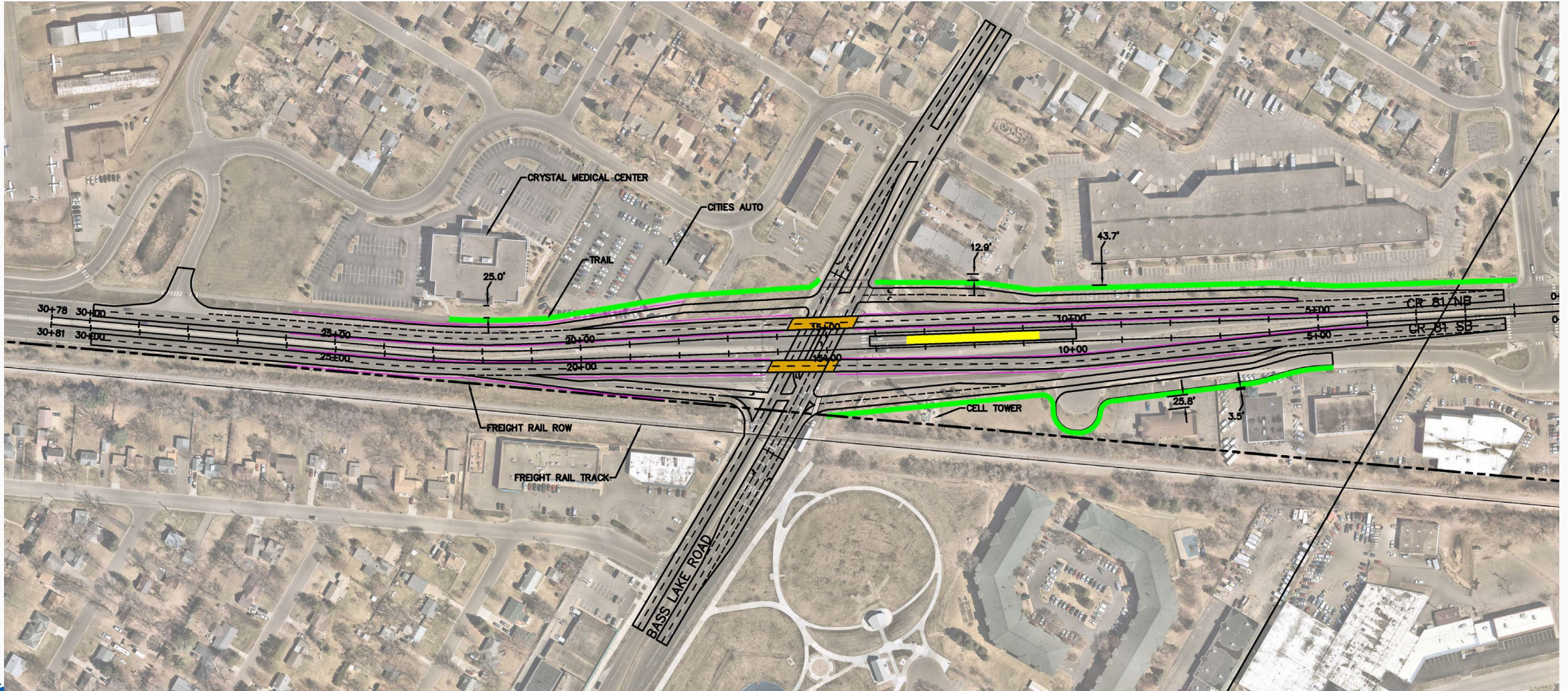


North Memorial Hospital Station Study Area

- Lowry Avenue connection [video](#)
- West Broadway Avenue connection
 - [Option 1: Video](#)
 - [Option 2: Video](#)

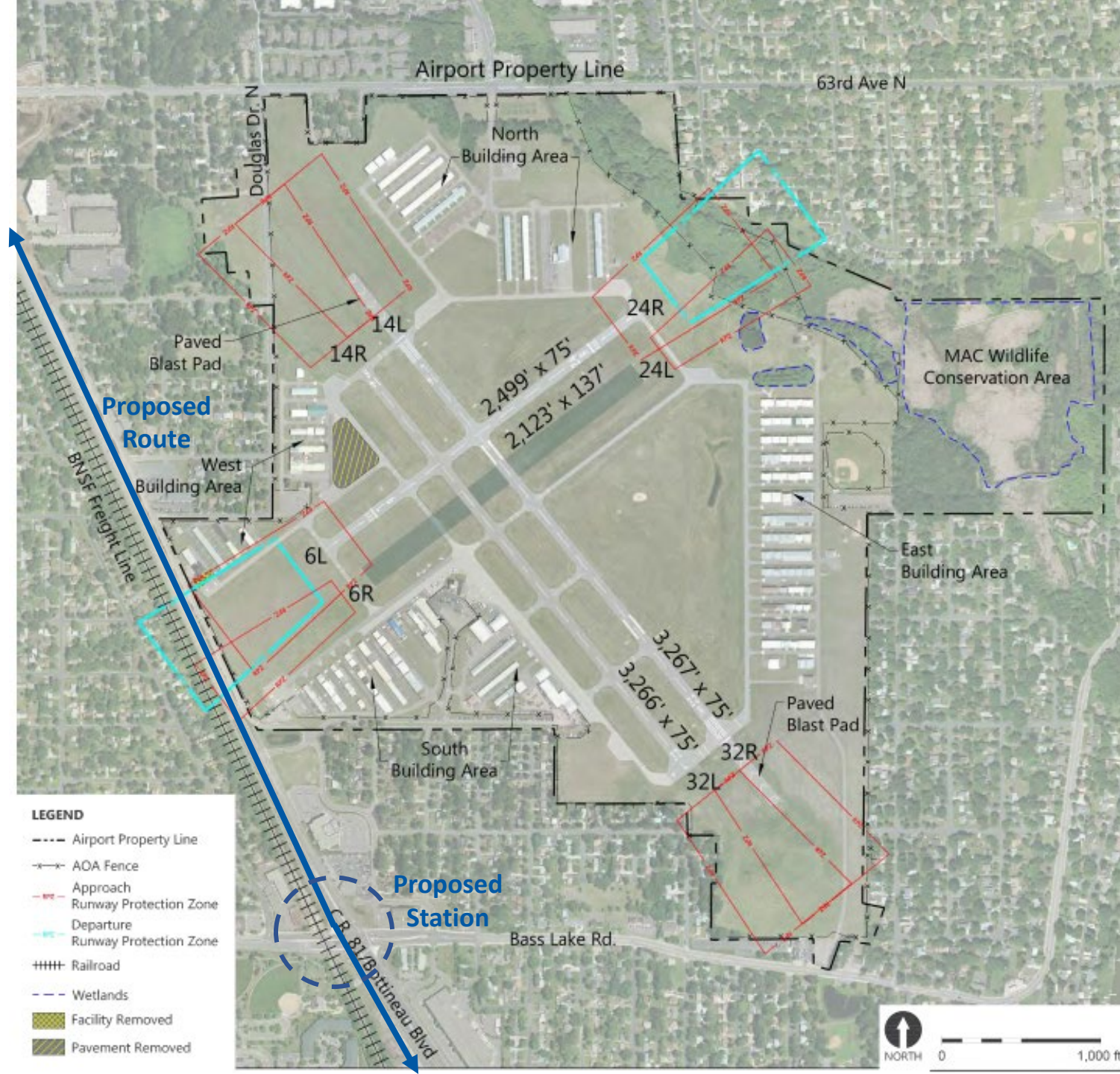
Bass Lake Road Intersection

- Potential to grade separate CR 81 over Bass Lake Road

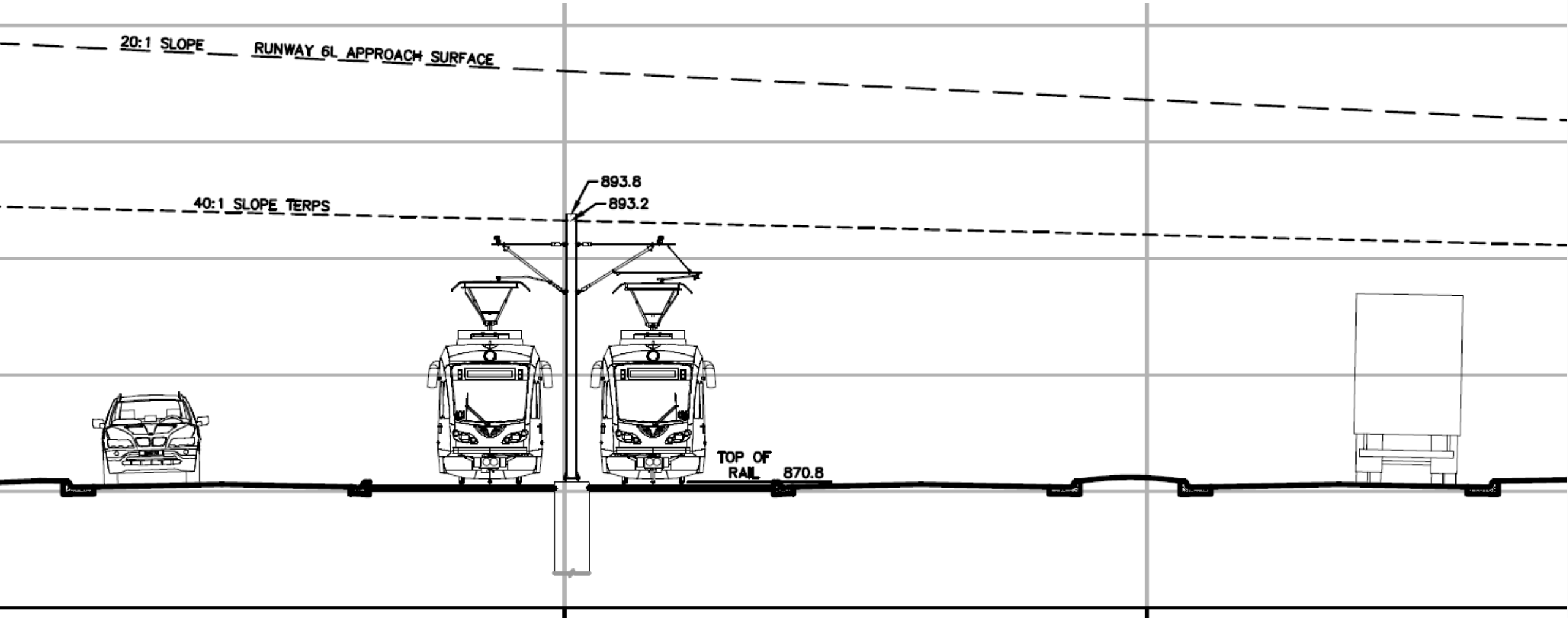


Crystal Airport Considerations

- Like in the past, ongoing coordination with the Federal Aviation Administration (FAA) and the Metropolitan Airports Commission (MAC)



Light Rail & Runway Approach



Upcoming Community Meetings

- Crystal Open House: Wednesday, September 29 from 5:00 -7:00 PM, Crystal Community Center
- Robbinsdale Open House: October TBD

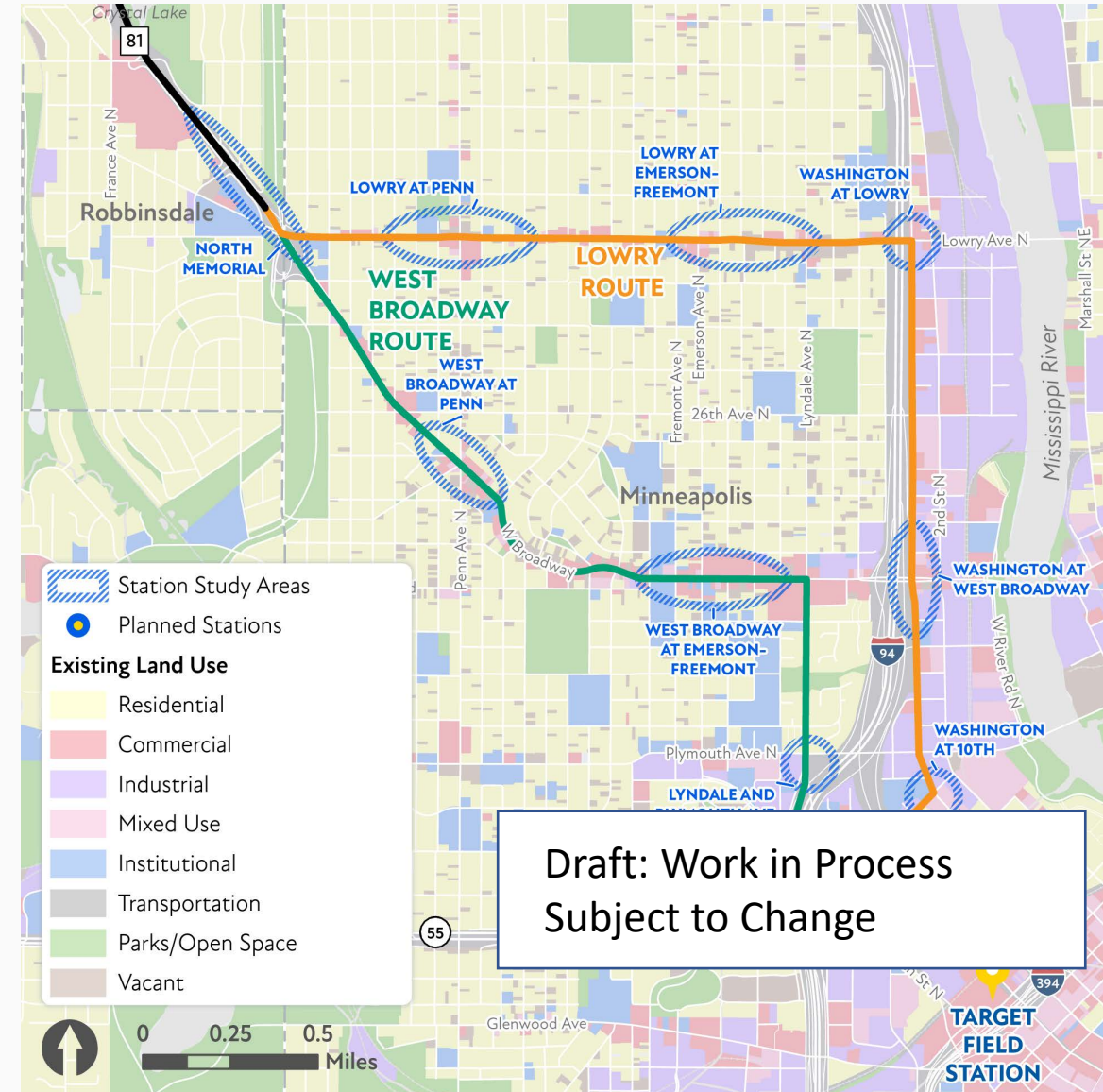
Minneapolis Update

Minneapolis Update

- Selected route options for evaluation: West Broadway and Washington / Lowry
- Determined station study areas for each route
- Establishing evaluation criteria
- Advancing design details
 - Station configurations and locations
 - Intersections with turn lanes

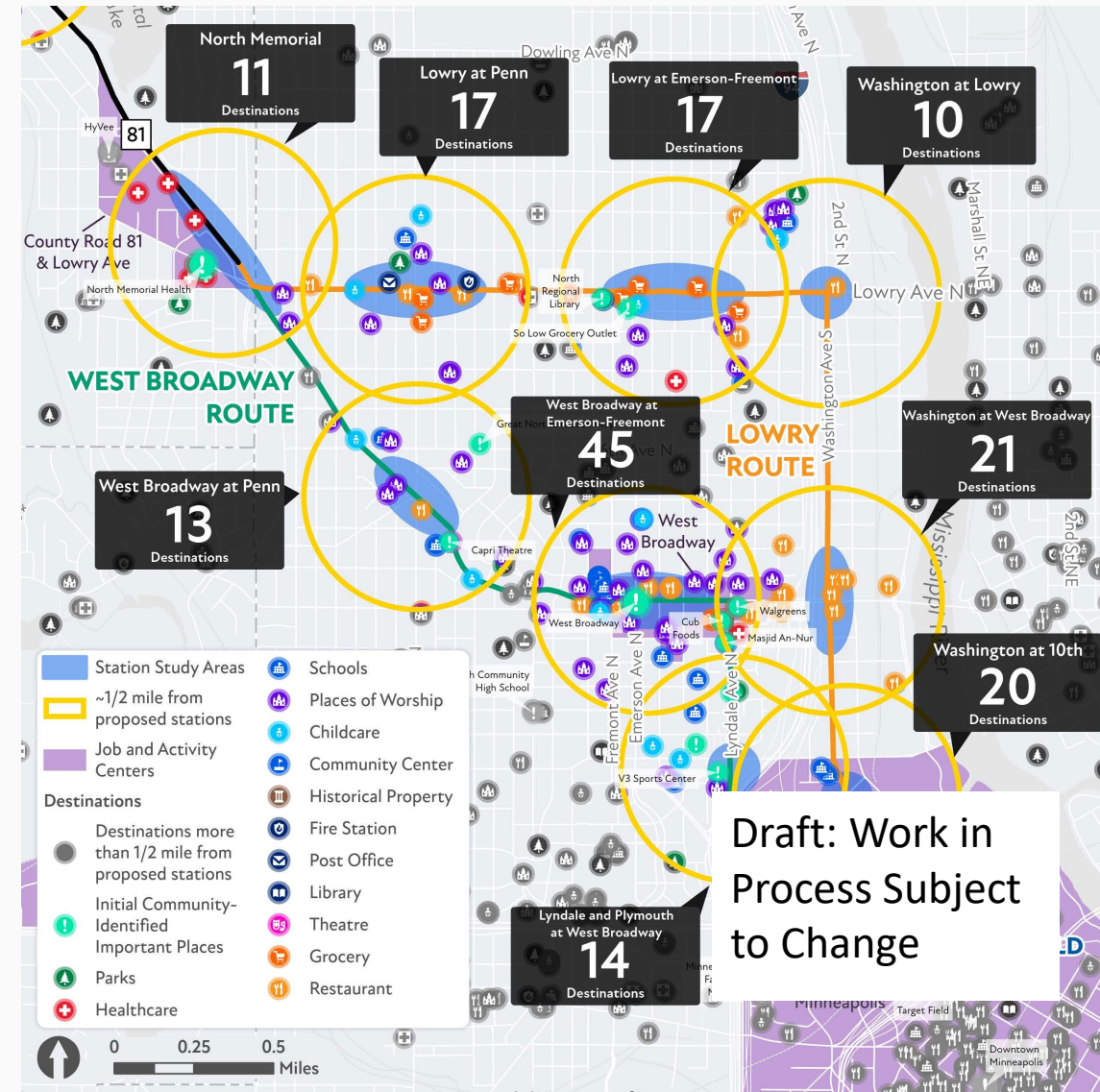
Examples of Information Considered in Evaluation Process

- Land Use
- Equity considerations
- Community demographics
- Traffic and parking information
- Right-of-Way



Examples of Information Considered in Evaluation Process

- Destinations served by proposed stations
- Projected ridership
- Projected travel time



Minneapolis Update

- Community design workshops
 - Dates in progress
 - Details:
 - See updated details including turn lanes, station placement options, dimensioning and routing options
 - Engage on what solutions you think work best for your community, and any opportunities or challenges you see with each option
 - Review data and discuss the benefits & impacts of both routes



Project Schedule

Project Schedule: Upcoming Milestones

- Fall Community Workshops
- December 2021: Draft Report
 - Culmination of community engagement and technical work
 - 45-day comment period
- March 2022: Final Report
 - Will build on draft report, incorporating feedback from comment period
 - Will recommend route and station study areas to advance for further engineering and environmental review
 - 30-day comment period

Route Modification Report: Overview

- Project history
 - Why the BLRT Project is needed and reason for change in route
 - Building from March 2021 Initial Route Evaluation report
- Process
 - Demonstrate decision-making is following a transparent process and incorporating community input at every stage
- Evaluation
 - Show how decisions are made based on Project Principles and a set of evaluating criteria
 - Incorporate important feedback and comments from community engagement

Project Goals Guide Evaluation Process

- Improve transit access and connections to jobs and regional destinations.
- Improve frequency and reliability of transit service to communities in the corridor
- Provide transit improvements that maximize transit benefits, while being cost competitive and economically viable
- Support communities' development goals
- Promote healthy communities and sound environmental practices including efforts to address climate change
- Advance local and regional equity and work towards reducing regional racial disparities

Anti-Displacement Facilitator Selection Update

Anti-Displacement Contractor Introduction

- The Center for Urban and Regional Affairs (CURA) works with community leaders and local government partners to produce knowledge that drives change. CURA's mission is to connect the resources of the University of Minnesota with the interests and needs of urban communities and the region for the benefit of all.
- CURA is founded on the belief that partnership between the University, community leaders, philanthropic organizations and government is mutually beneficial
- **Project Manager: C Terrance Anderson**
 - As CURA's Director of Community Based Research, C Terrence oversees CURA's community-based programs
 - Previous professional experience in urban planning and public policy positions: Equity Manager at Metropolitan Council, Community Outreach coordinator for Metro Transit and Transportation Planner for Southeastern Regional Planning Commission in MilwaukeeHe resides in North Minneapolis with his wife and children



CURA Research and Organizing Team:

- Dr. Edward Goetz, Director of CURA
- Dr. Brittany Lewis, Senior Research Associate
- Jeff Matson, Program Coordinator of Community GIS
- Dr. Tony Damiano, Researcher
- Ned Wik Moore, Program Director of Neighborhood Leadership and Organizing
- Malik Holt-Shabazz, Program Director of Neighborhood Leadership and Organizing
- Kristen Murray, Program Development
- Graduate Research Assistant - TBD

Additions to Team CURA:

Bellwether Consulting

Works with government agencies to apply an equity lens to policies and practices.



Allison Bell

President

Since 2011, Ms. Bell has led equitable development work in the Twin Cities

Housing Justice Center

Using unique expertise in housing law and policy used to preserve and expand the supply of affordable housing across Minnesota and to protect the civil rights of people who need affordable places to call home.



Margaret Kaplan

President

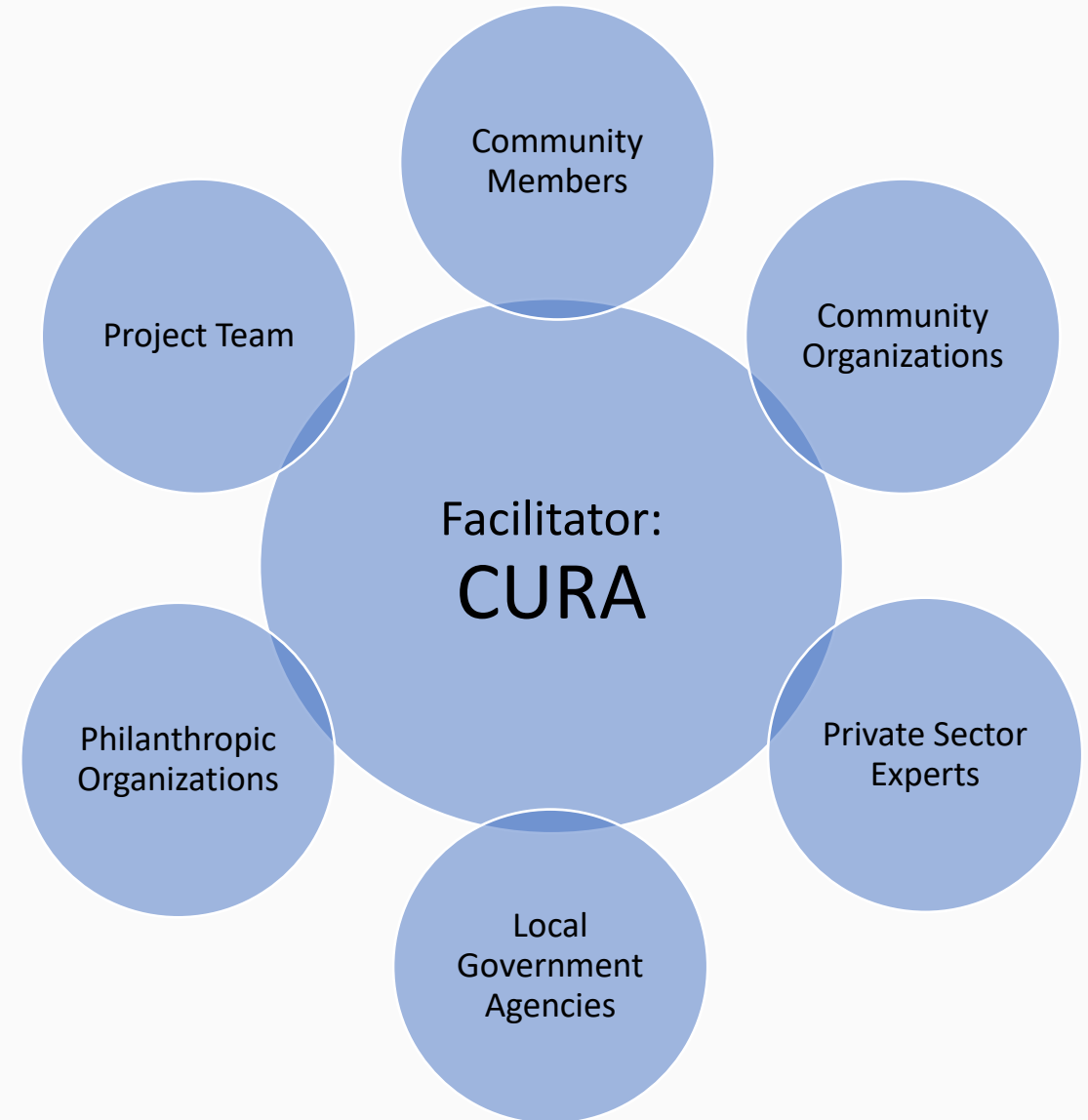
Ms. Kaplan has a robust knowledge about local, state, and federal housing policy and programs in addition to community organizing

Next Steps



Anti-displacement Work Group

- CURA will lead the creation and facilitation of a new Blue Line Extension Anti-Displacement Work Group



Next Meeting: Thursday, October 14 at 1:30 PM

Stay Connected!

- Project website: bluelineext.org
 - Project news, maps, surveys, what we're hearing
 - Committee meeting materials: agenda, handouts, presentations, meeting minutes
 - Sign-up for GovDelivery project updates
 - Connect with staff for your questions or schedule a presentation
- Follow us:
 - Twitter: @BlueLineExt
 - Facebook: MetroBlueLineExtension

