



Corridor Management Committee: May 13, 2021



Brooklyn Park | Crystal | Robbinsdale | Golden Valley | Minneapolis



Today's Topics

- Approval of April 8, 2021 BLRT CMC Meeting Summary
- Committee Reports
- What to Expect: Schedule Update
- LRT System Overview
- Anti-displacement Working Group
- Corridor Management Committee Membership



Approval of April 8, 2021 Meeting Summary

Committee Reports

- Community Advisory Committee Report
- Business Advisory Committee Report

What to Expect: Schedule Update

Next Steps: Continue to Seek Solutions

Project Goals, Objectives and Criteria

Conceptual Engineering and Design

Engineering Analysis to Understand LRT &
Roadway Configurations

Potential Station Locations

Right of Way Impacts

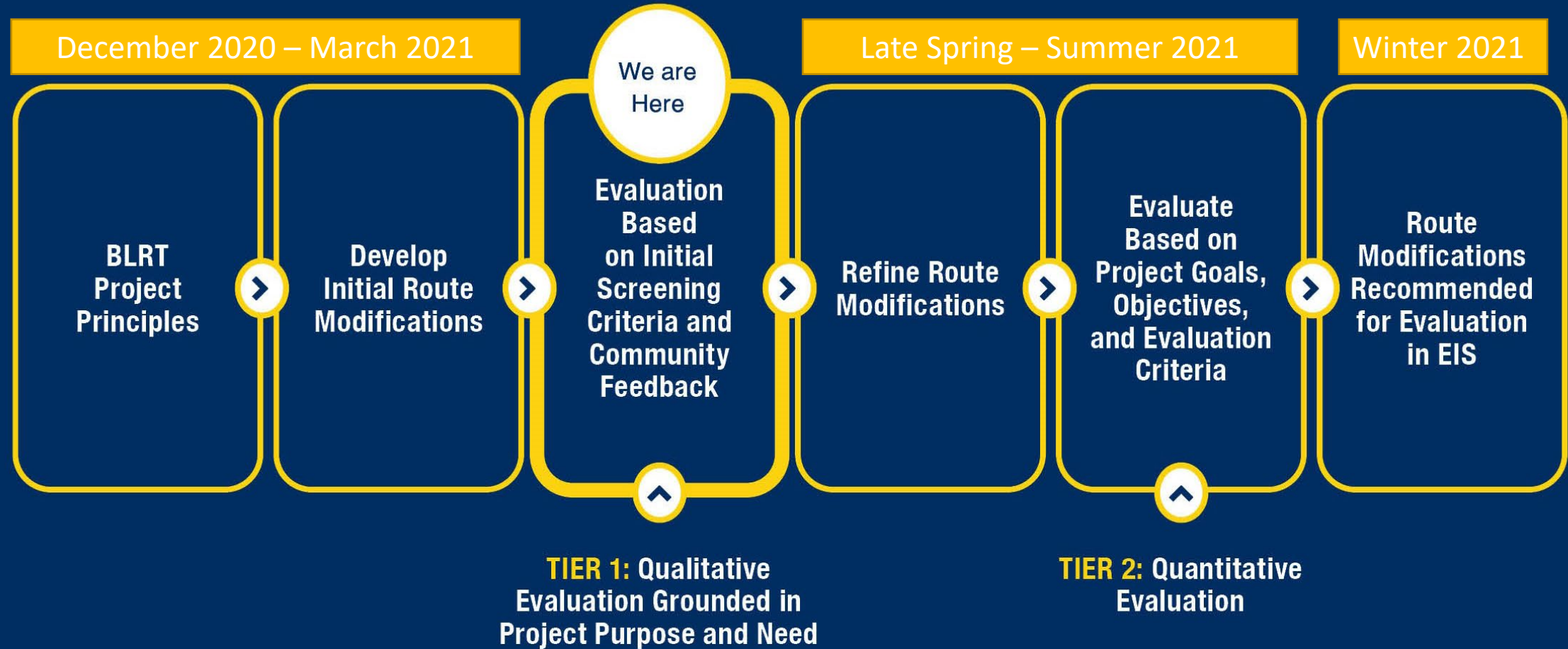
Community Benefits

Further efforts to address anti-
displacement, equitable development and
community wealth building

Previous Project Commitments

Address investments related to the
previous alignment

Approach & Timeline



Approach & Timeline

- Survey & interactive map open until May 28 provides for more community input
 - Engagement Cohort expressed the need for more time on initial route engagement
 - Mindful of community events over the past month
- Provides for a more collaborative process of developing the main report elements

Upcoming Advisory Committees Discussion Topics

- June:

- Generalized visualizations showing how LRT could look and fit along the routes
- Discussion of project evaluation criteria
- Share community feedback

- July:

- Route walkthrough, will begin to provide area specific details about LRT, traffic lanes, sidewalks, and potential Right of Way impacts
- Potential station locations

Upcoming Advisory Committees Discussion Topics (cont.)

- August:
 - Further discussion on specific engineering details
 - Draft route evaluation information
- September: Release Draft Route Report

Community Input Shaping Technical Advancement

- Reviewing suggested missing routes options
- Analyzing suggested station locations
- Analyzing community identified issues and opportunities
- Reviewing input on project Goals

April Outreach Highlights: Activities Lead by Cohort & Advisory Committee Members

- Attendance at Earth Day events, vaccination sites, and cultural festivals with project information
- April 15: Northside Business Luncheon
- April 15: Seeds to Harvest Group Discussion
- April 28: Robbinsdale Listening Session

May Engagement Highlights

- May 12: Minneapolis Downtown Council
- May 20: Jordan Area Community Council
- May 25: Robbinsdale Chamber of Commerce
- May 26: Facebook Live with Commissioner Lunde

Upcoming Engagement Activities

- Summer overview
 - Community event attendance & pop-ups
 - Ongoing community specific meetings
- June:
 - Broader engagement focused on anti-displacement
- July:
 - Target conversation in July/August with corridor adjacent neighbors
 - Corridor wide events to highlight technical detail

Community Engagement Cohort

March 2021 – January 2022

Contact	Organization	Areas
Ange Hwang	Asian Media Access Inc	Area 1, 2, 3
Ekta Prakash	CAPi USA	Area 1, 3
Tezzaree El-Amin Champion	Encouraging Leaders	Area 3
Nichole Buehler	Harrison Neighborhood Association	Area 3
Kristin Murray	Juxtaposition Arts	Area 3
Sunny Chanthanouvang	Lao Assistance Center of MN	Area 1, 3
Jackson George	Liberian Business Association	Area 1, 2
Warren McLean	Northside Economic Opportunity Network	Area 2, 3
Martine Smaller	Northside Residents Redevelopment Council	Area 3
Felicia Perry	West Broadway Business Coalition	Area 3
Cathy Spann	Jordan Area Community Council	Area 3
Danecha Goins	Cleveland Neighborhood Association	Area 3
Diana Hawkins	Hawthorne Neighborhood Council	Area 3
Markella Smith	McKinley Community Neighborhood Association	Area 3

Cohort Specific Feedback

- Timing is a concern; our communities need space for healing and grace
- Prioritize translation of project materials
- Clarity on the big picture of how all the different advisory committee meetings fit together
- Need to recognize the community input in previous work and pull forward the relevant feedback
- Incorporate a historical perspective into project communications
- Recognize the different levels of community awareness and expertise
- Anti-displacement work is a priority

LRT System Overview

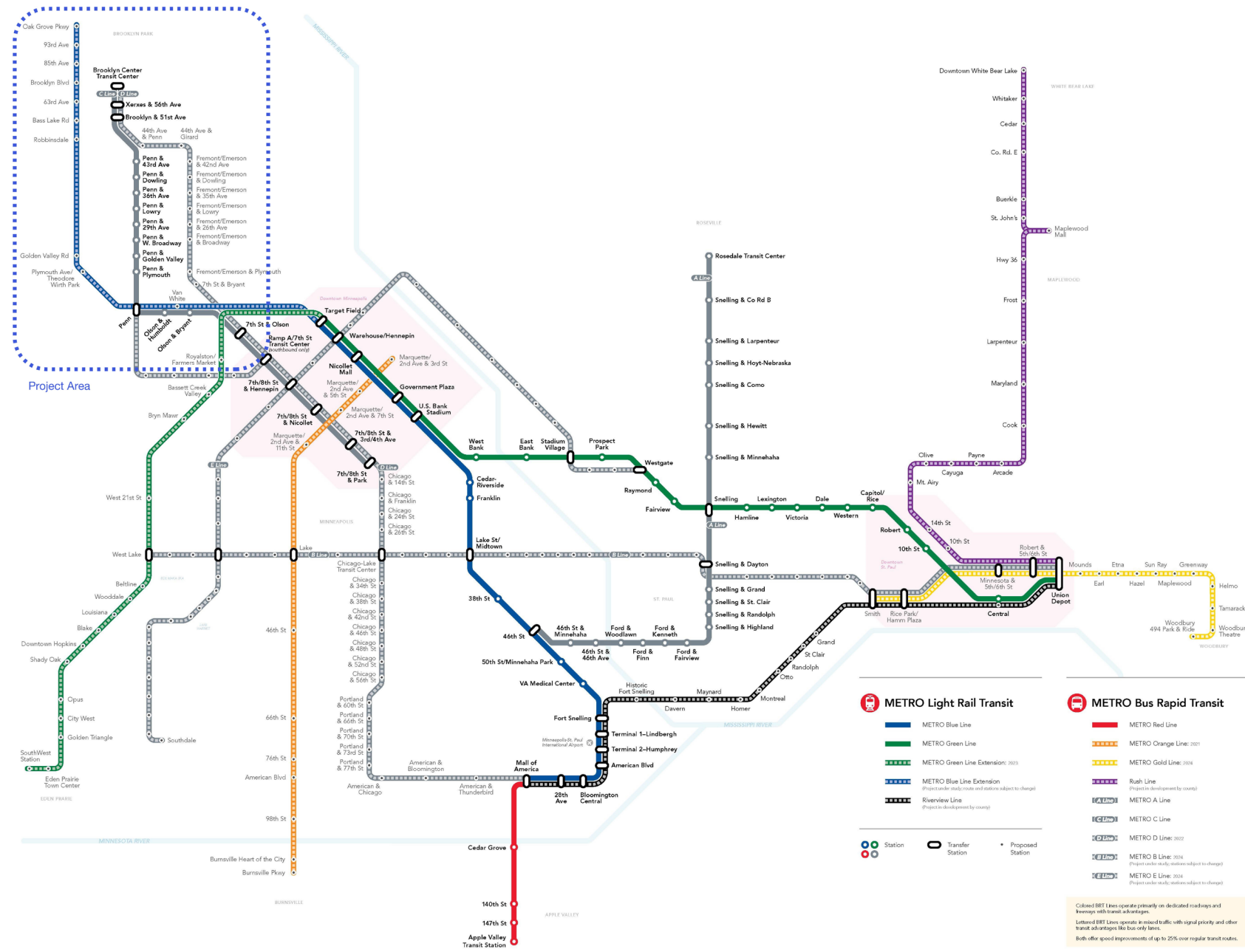
METRO System



Fast. Frequent. All day. All yours.

Future Rapid Transit Network

- Includes METRO LRT Blue and Green Line, Bus Rapid Transit Red, A and C Lines
- Fast, frequent, all-day service
 - 10 –15 minute headways
- Stations with enhanced amenities



Rail Modes

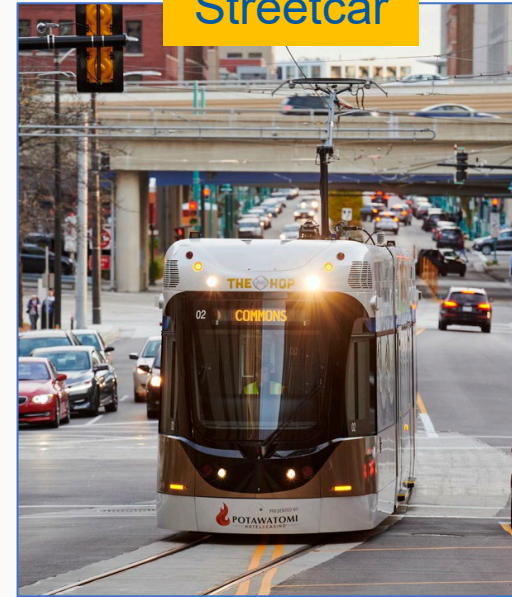
Commuter Rail



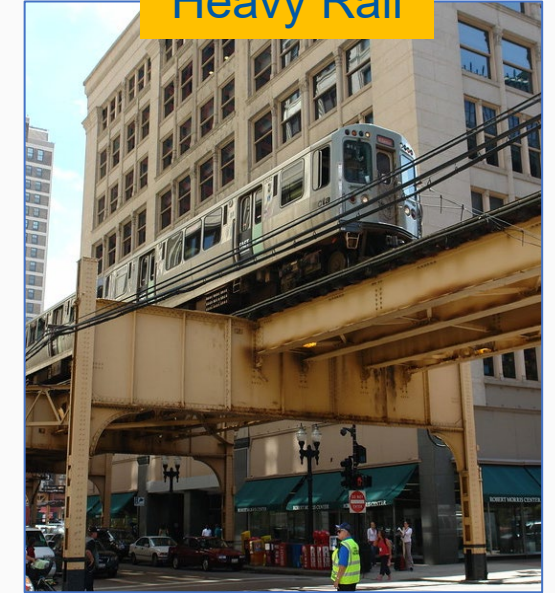
Light Rail



Streetcar



Heavy Rail



Station Spacing:

2 to 5 miles

Runningway Type:

Railroad

Example: Northstar

Station Spacing:

1/2 to 1 mile

Runningway Type:

Mostly dedicated,
minimal shared with
traffic

Example: Green & Blue
Lines

Station Spacing:

1/4 to 1/2 mile

Runningway Type:

Mostly mixed with
traffic

Example: Riverview
Line (planned)

Station Spacing:

Urban ~ 1/2 mile;

Suburban ~ 1 to 5 miles

Runningway Type:

Exclusively dedicated

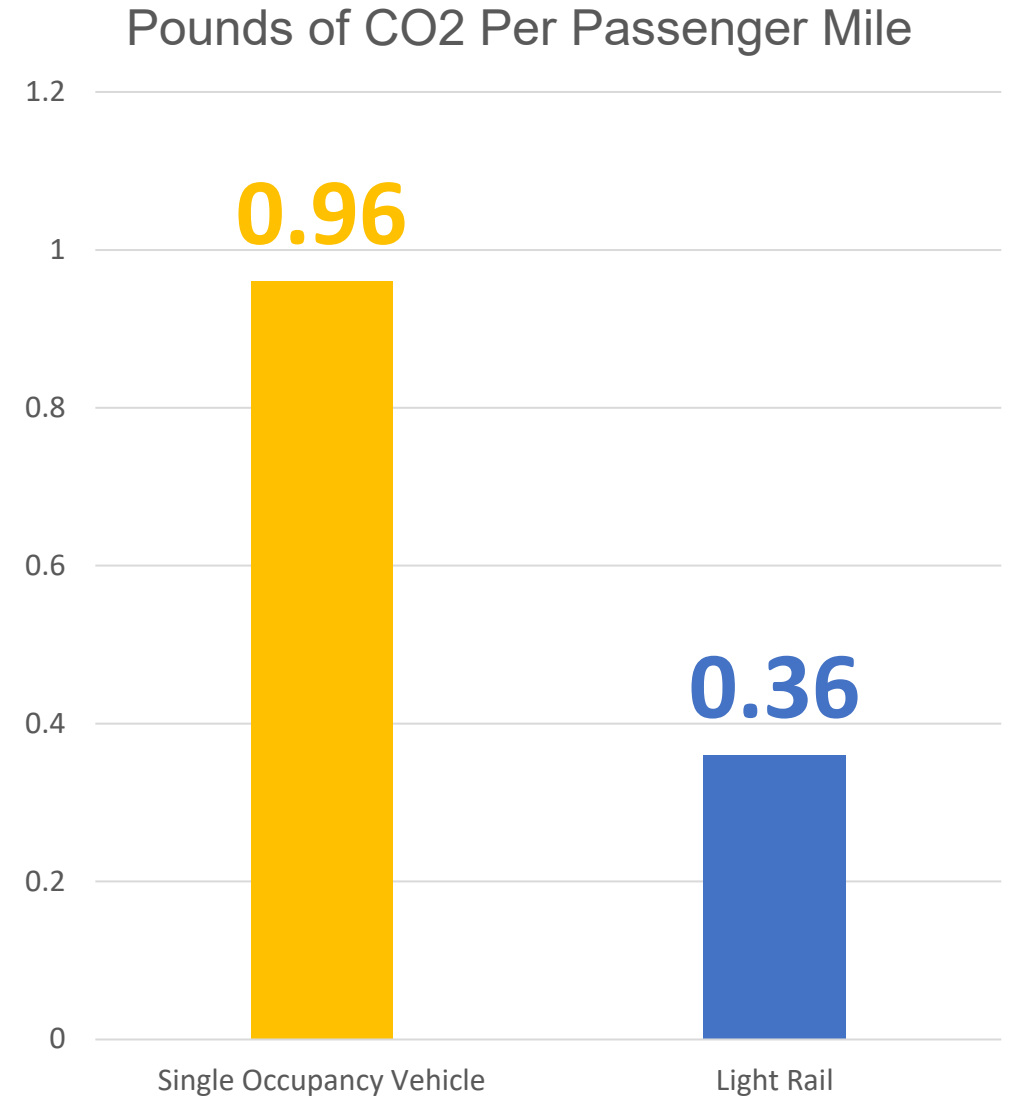
Example Systems:
Chicago "L", New York
subway

LRT Operating Assumptions

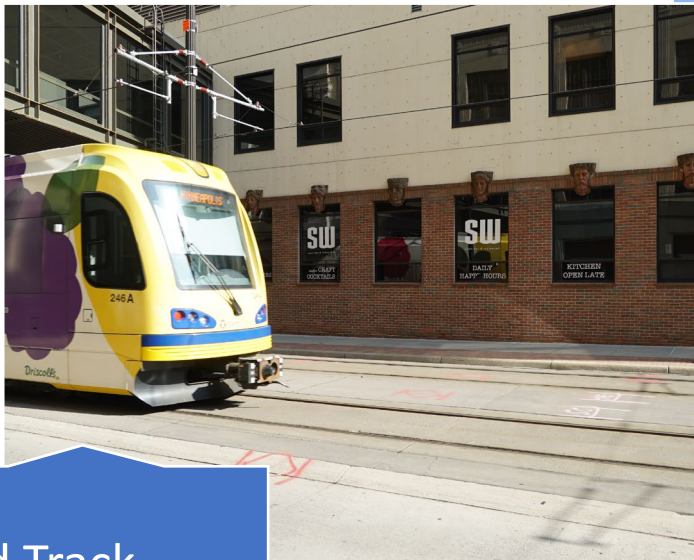
- Connects Brooklyn Park, Crystal, Robbinsdale, Minneapolis and Bloomington to local and regional employment, education, attractions
- Hours of operation/frequency:
 - Rush hours (weekdays 6:00-9:00 AM and 3:00-6:30 PM) and midday: 10 minutes
 - Evening/Weekends/Holidays: 10-30 minutes
- Fares:
 - Adults: Ages 13 – 64:
 - Non-rush hour: \$2; rush-hour \$2.50 (good for 2 ½ hours)
 - Reduced Fare: Youth/Seniors/Medicare Card Holders
 - Non-rush hour: \$1; rush-hour \$2.50 (good for 2 ½ hours)

Environmental Benefits

- Reduces vehicle miles traveled by removing vehicles from the road
 - Each rail car can carry up to 270 passengers, compared to the average car holding 1.7 passengers
- Reduces pollution by using electricity
- Encourages sustainable land use patterns



How It Operates



Embedded Track



Overhead electric line



Non-embedded Track

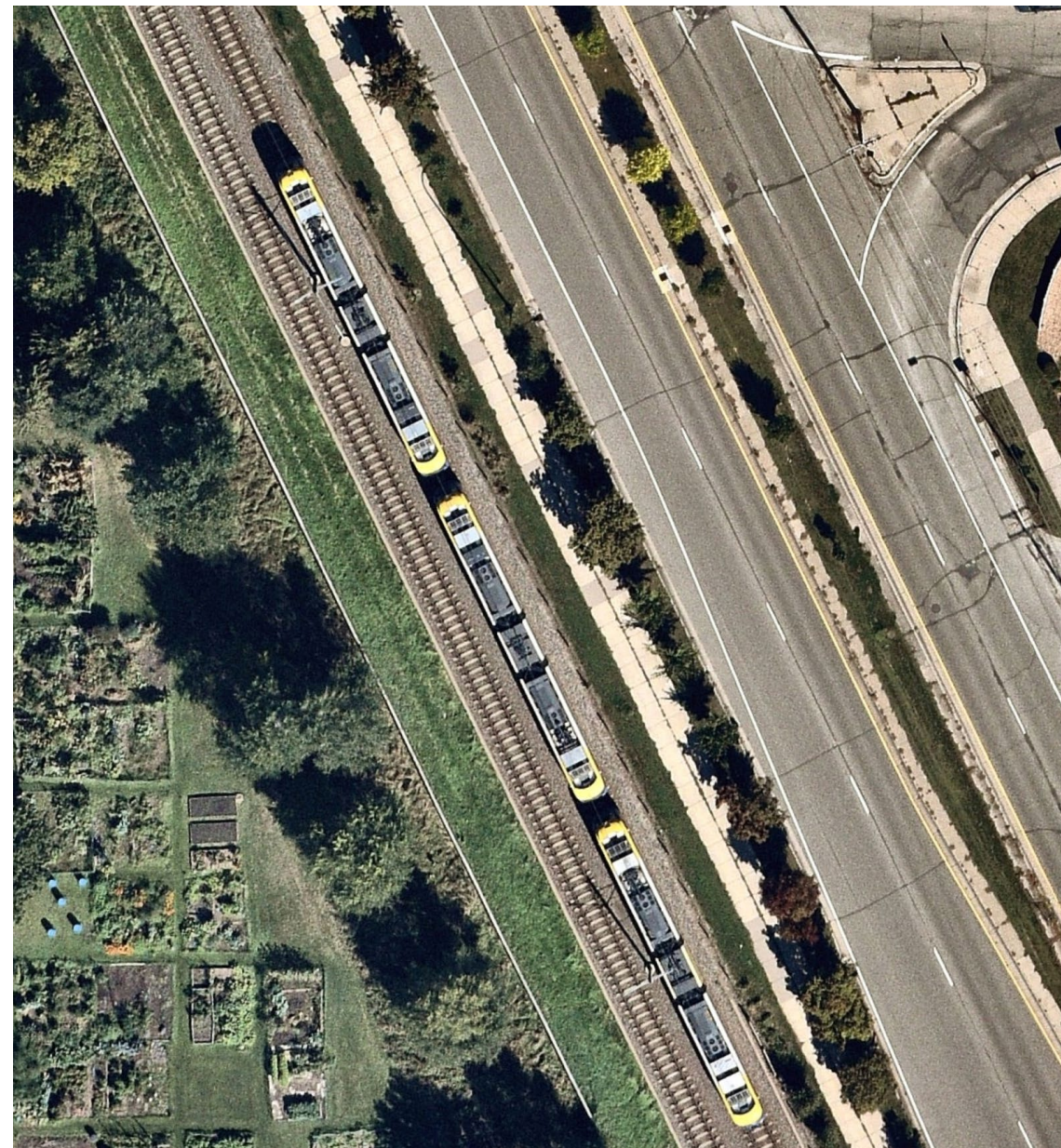
Center-running

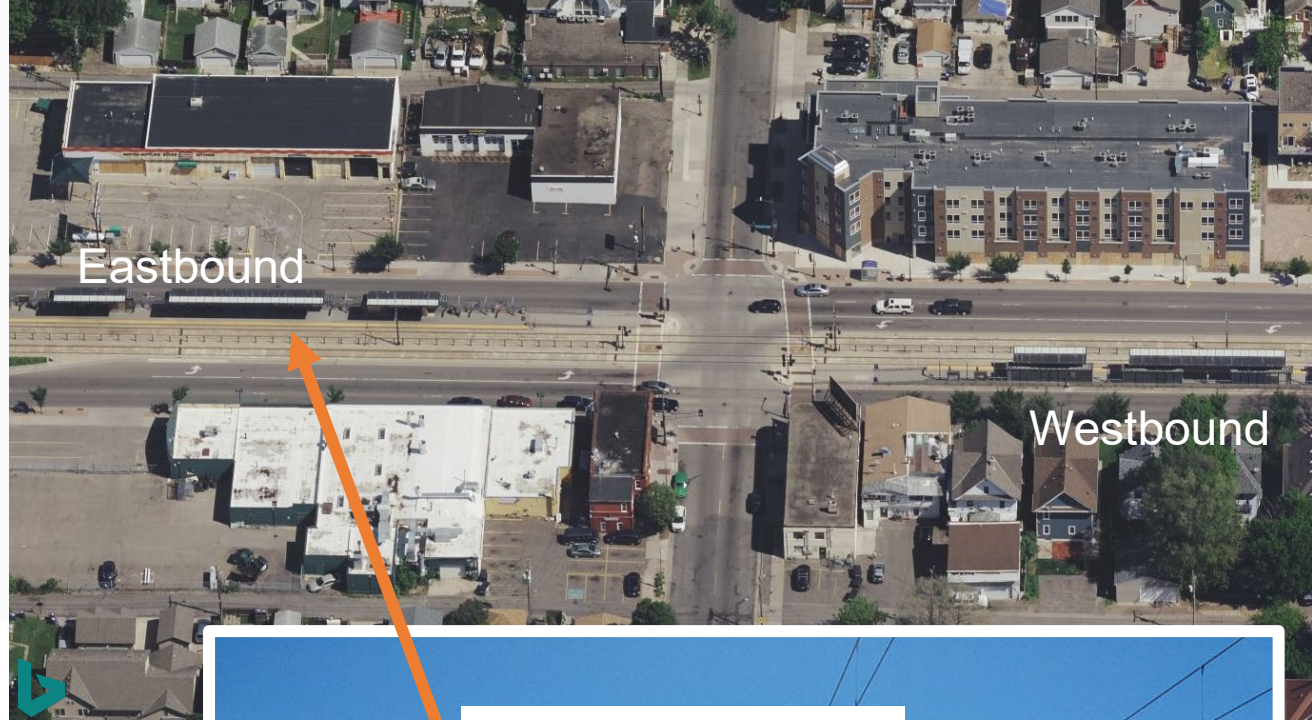
University Avenue, Saint Paul



Side-running

Hiawatha Ave, Minneapolis





CENTER, SHARED PLATFORM

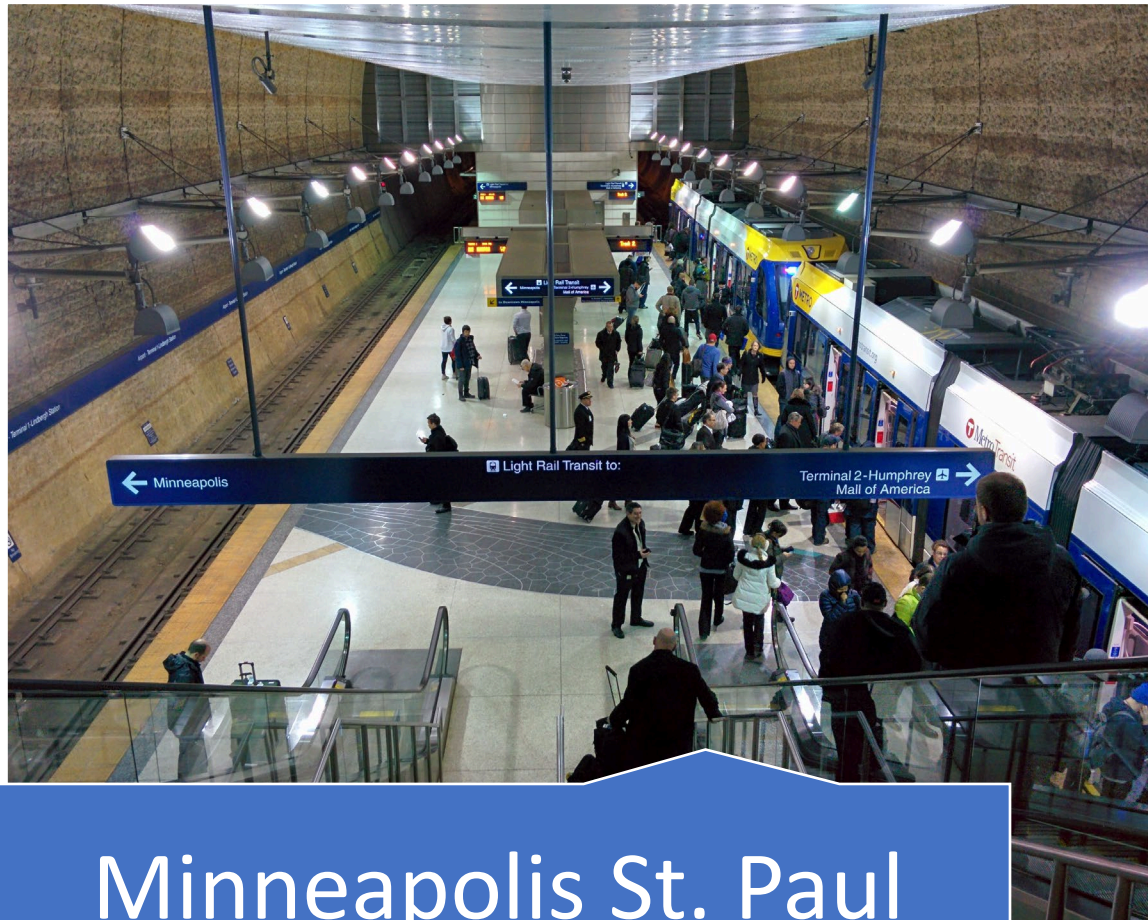


SPLIT PLATFORM



Above and Below Ground Stations

There are only two stations out of thirty-six stations in our system not at grade

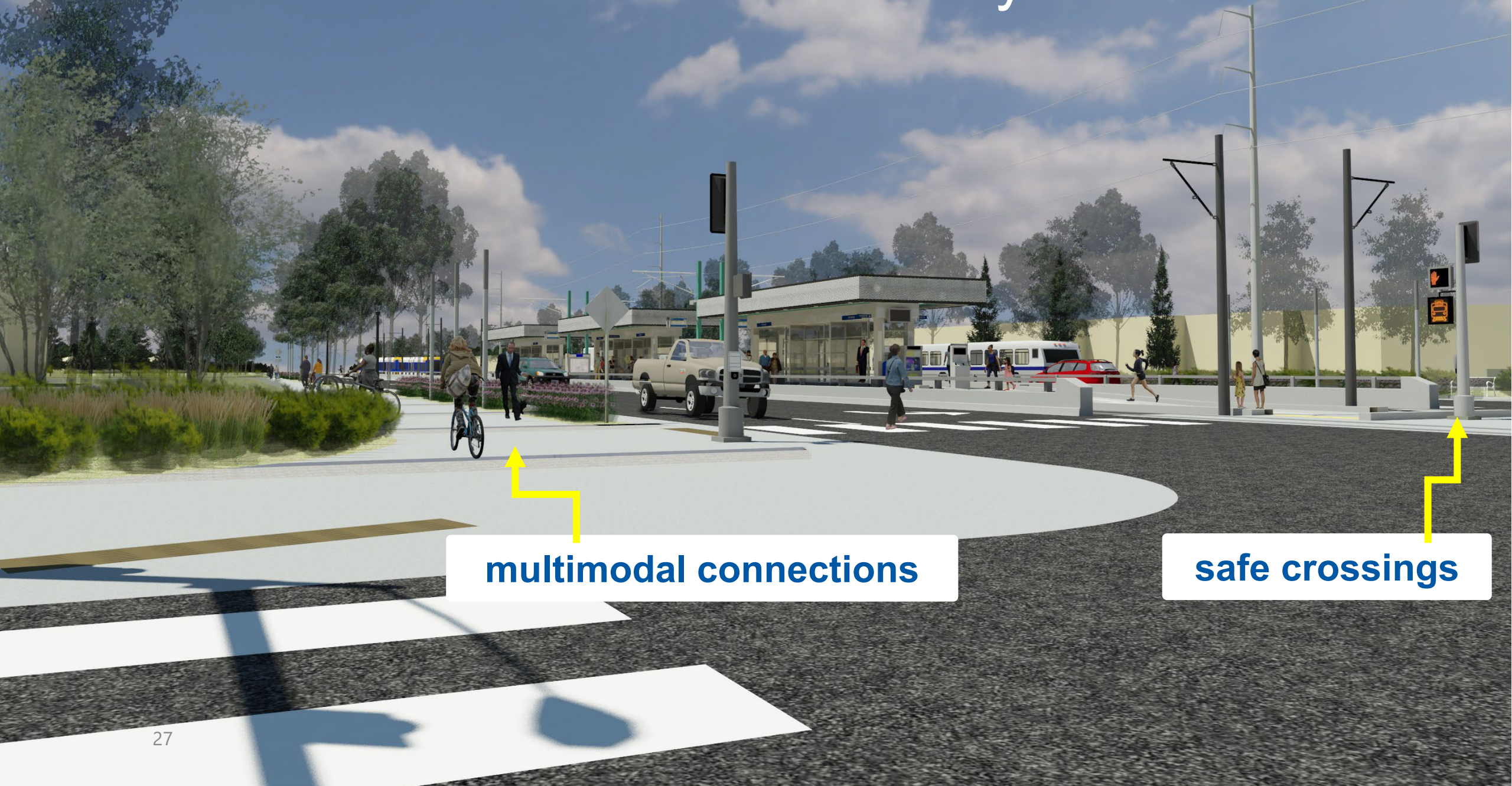


Minneapolis St. Paul
Airport



Elevated
Lake Street Station

Station Area Features: W. Broadway 85th Ave Station



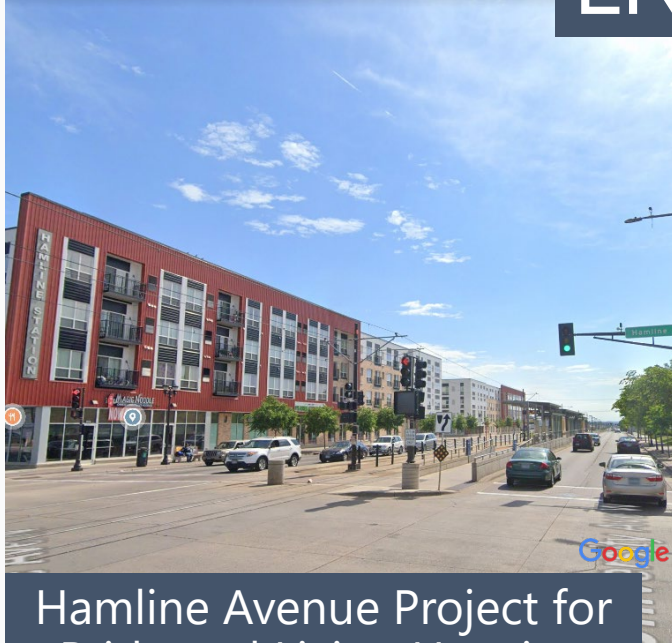
multimodal connections

safe crossings

Center Platform Station: 29th Ave SE



LRT: Neighborhood Context



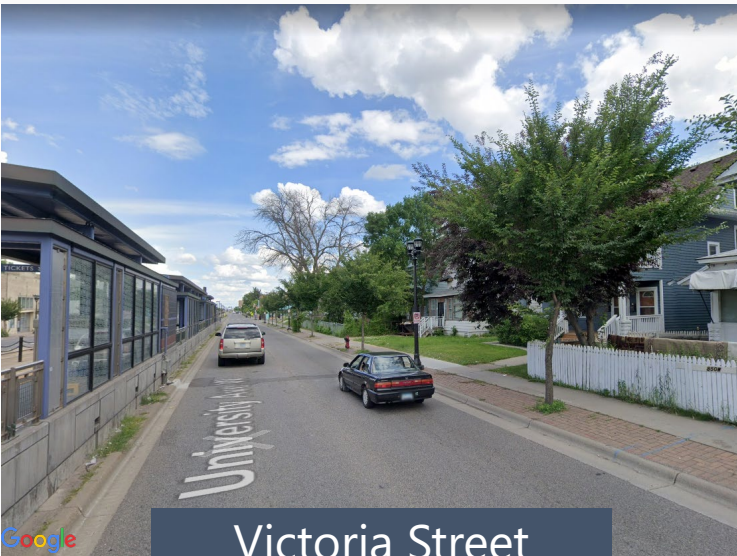
Hamline Avenue Project for
Pride and Living Housing



University of
Minnesota



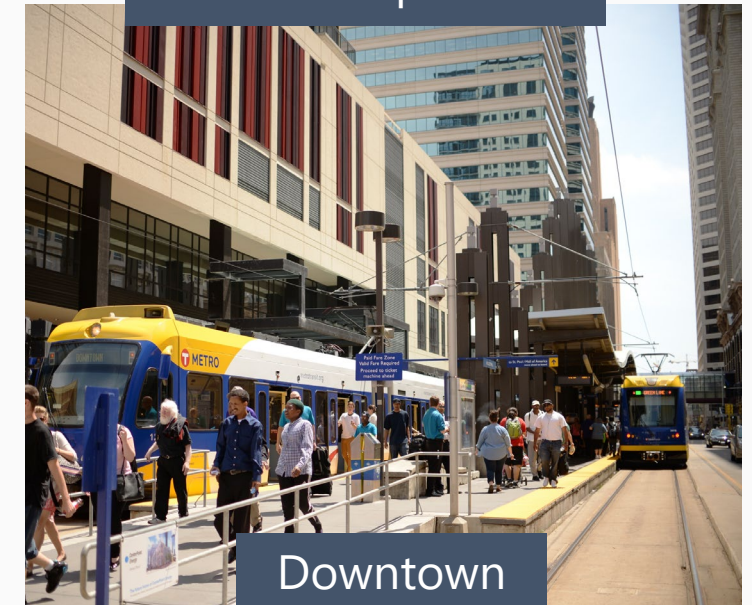
Minnehaha Avenue
Minneapolis



Victoria Street
Station St. Paul



Prospect Park
Station Minneapolis



Downtown
Minneapolis

Anti-displacement Working Group

Continue to Seek Solutions

Community Benefits

Further efforts to address anti-displacement, equitable development and community wealth building

Previous Project Commitments

Address investments related to the previous alignment

Moving Forward: April Advisory Committee Feedback

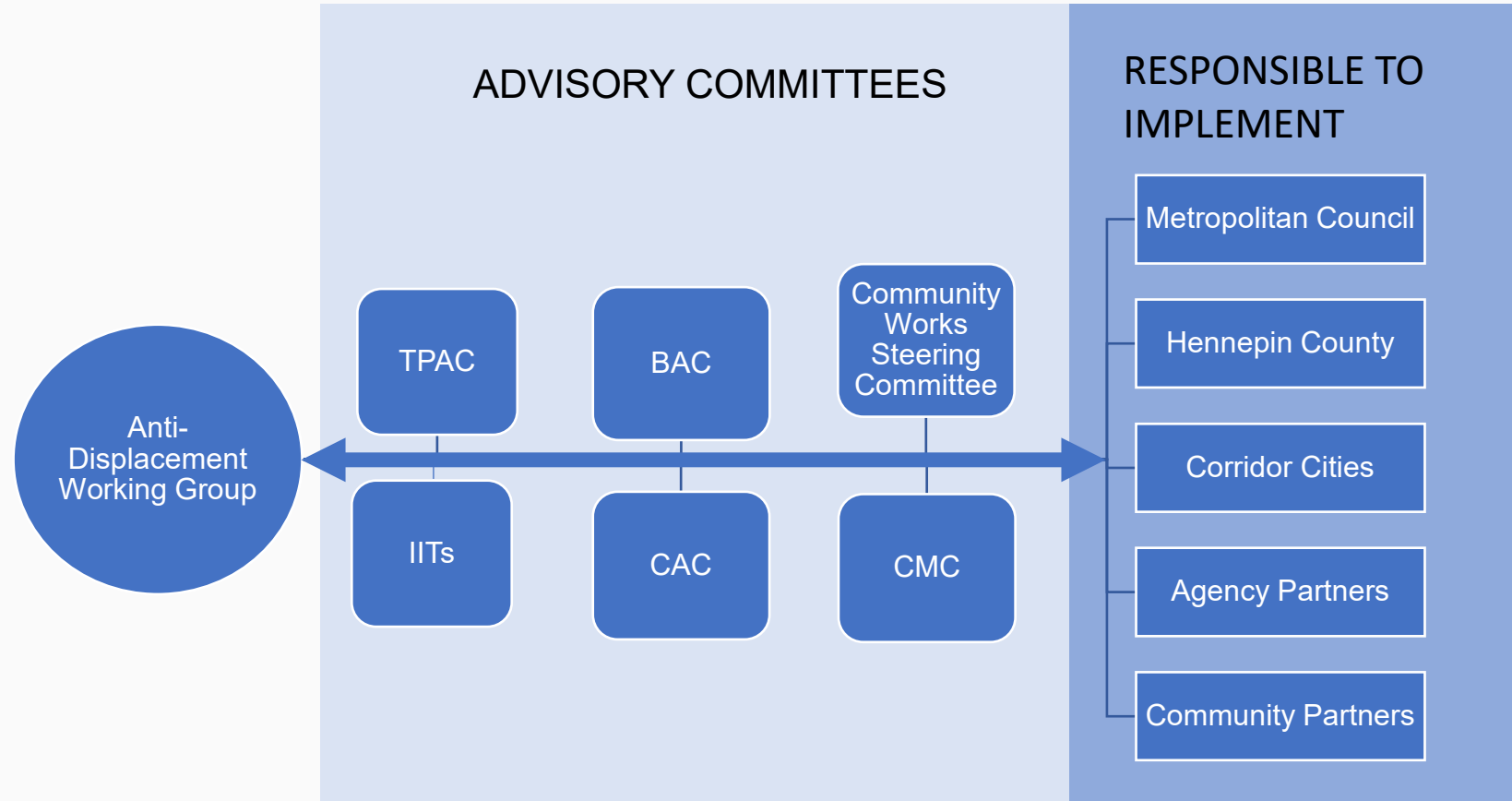
- Confirmed support of a third-party facilitator to lead this work
- Confirmed support for convening the group work as soon as possible
 - Anti-displacement should be worked on throughout the route planning, environmental review and advance design
- Request for national examples and possible shared definitions for discussion
- Feedback:
 - Anti-displacement is complicated, there are no easy solutions
 - There are many organizations who work in this area
 - This requires a commitment from the project

Advisory Committees: Suggested Names & Organizations

- TPAC: CREATE Toolkit (<https://create.umn.edu/toolkit/>)- Bonnie Keiler, CURA, Trust for Public Land, Center for Economic Inclusion
- BAC: The Alliance, Equity Council at the Met Council, Move Minneapolis and the Minneapolis Chamber of Commerce, CURA, the Blue Line Coalition, DEED
- CAC: Markeda Zulu-Gillespie (UROC), Anika Roberts, Phillips Foundation, Sanctuary Church, Robbinsdale Human Rights Commission, Hennepin County Disparity Reduction Team, Neighbors for More Neighbors, OurStreets, Minneapolis Urban League
- CMC: U of MN

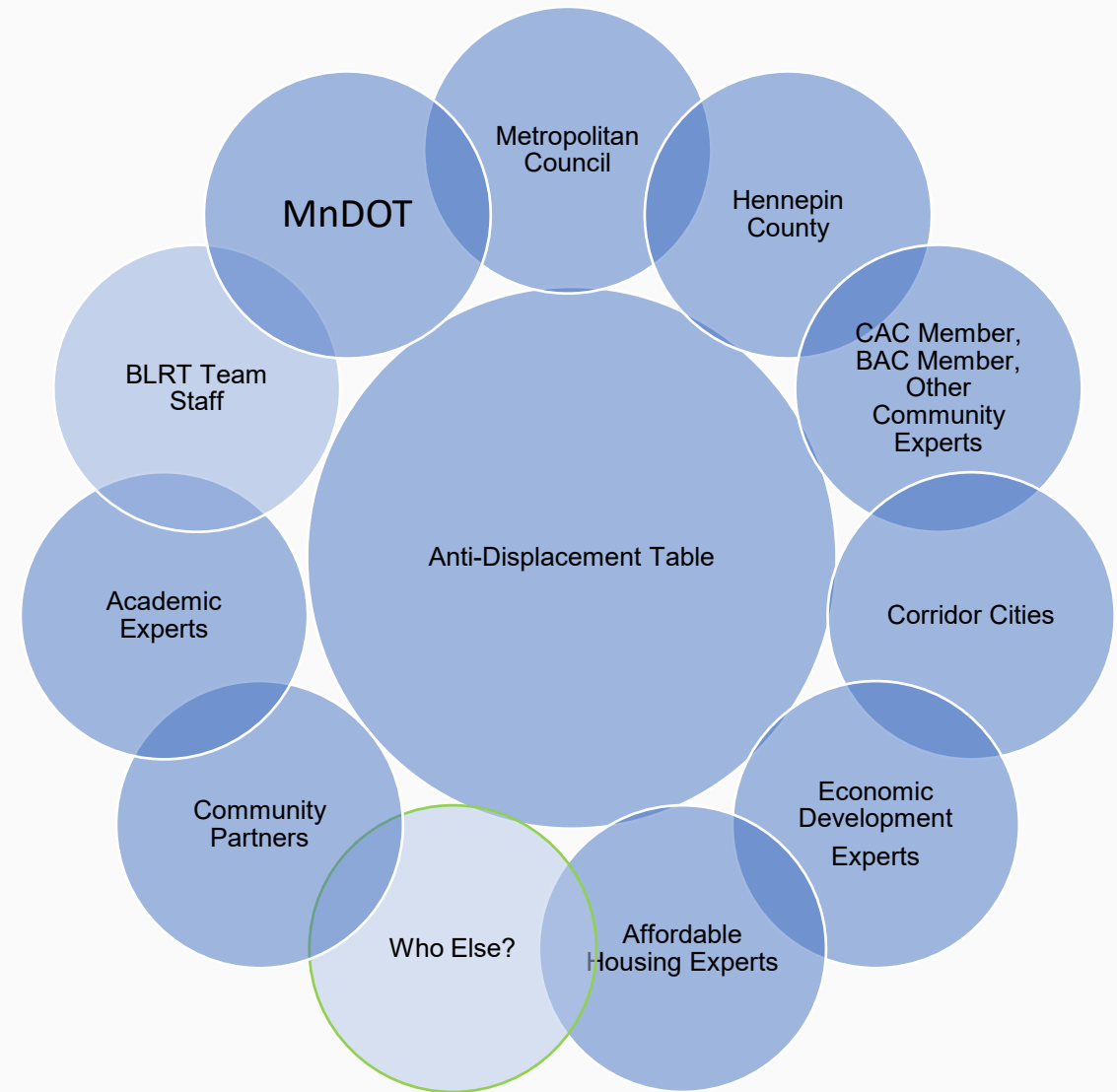
Anti-displacement Working Group Imbedded in Project Work

- Working group will seek feedback from advisory committees and partners



Working Group

- Identify representatives
- Bring together experts from community, Met Council, Hennepin County, corridor cities BLRT Advisory Committees and others



Moving Forward

- Gathering list of organizations and key stakeholders based on conversations
- Considering the composition and facilitation of a group
- Gathering definitions, case studies and identified local and national experiences in this work
- Drafting an RFP to find a convener who will lead this work
- Exploring how project goals and evaluation criteria can address anti-displacement

Next Steps

- Review Draft Request for Proposal with city staff and Advisory Committees in June; seeking feedback
- Release Request for Proposals
- Continue broader community engagement on anti-displacement in June to support work of anti-displacement facilitator

Next Steps: Green Line (Central Corridor): About Community, Not a Commute

- Bring in local stakeholders to share their perspective, answer questions
 - Business owners
 - Residents
 - Organizers
 - Policy Makers



Cultural Corridor Meeting, 2013

Credit: Central Corridor Funders Collaborative

Corridor Management Committee Membership

Next Meeting: Thursday, June 10 at 1:30 PM

Stay Connected!

- Project website: bluelineext.org
 - Project news, maps, surveys, what we're hearing
 - Committee meeting materials: agenda, handouts, presentations, meeting minutes
 - Sign-up for GovDelivery project updates
 - Connect with staff for your questions or schedule a presentation
- Follow us:
 - Twitter: @BlueLineExt
 - Facebook: MetroBlueLineExtension

