



# SWLRT Business Advisory Committee

August 18, 2021



# Today's Topics

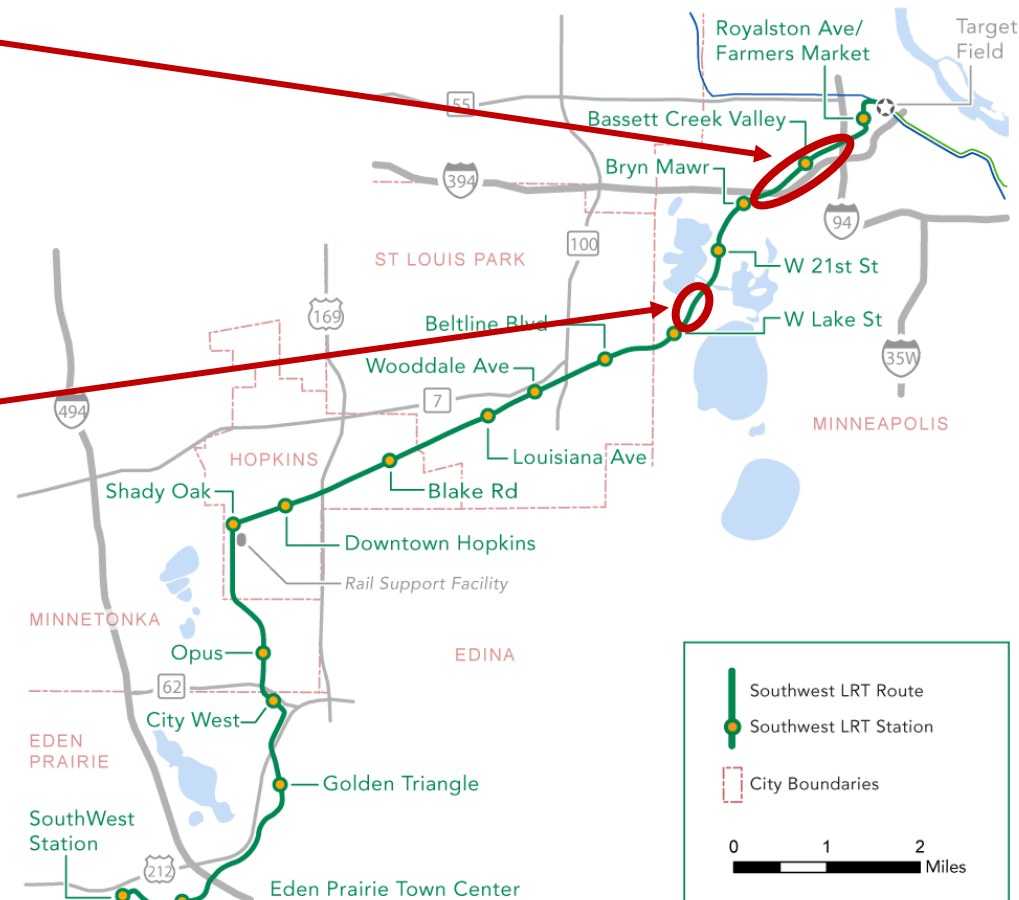
- Project Update
  - Construction Update
  - Public Engagement



# Construction Activities

# Civil Construction Challenges

- Corridor Protection Wall
  - Required per BNSF agreement
  - Required environmental clearance which was completed after civil construction contracting
  - Added to the Civil Construction Contract by change order
- Secant Wall
  - Unforeseen soil conditions (settling during initial tunnel construction) necessitated an alternative construction method
  - Adding to the Civil Construction Contract by change order
- These issues impact other SWLRT contracts and the project schedule



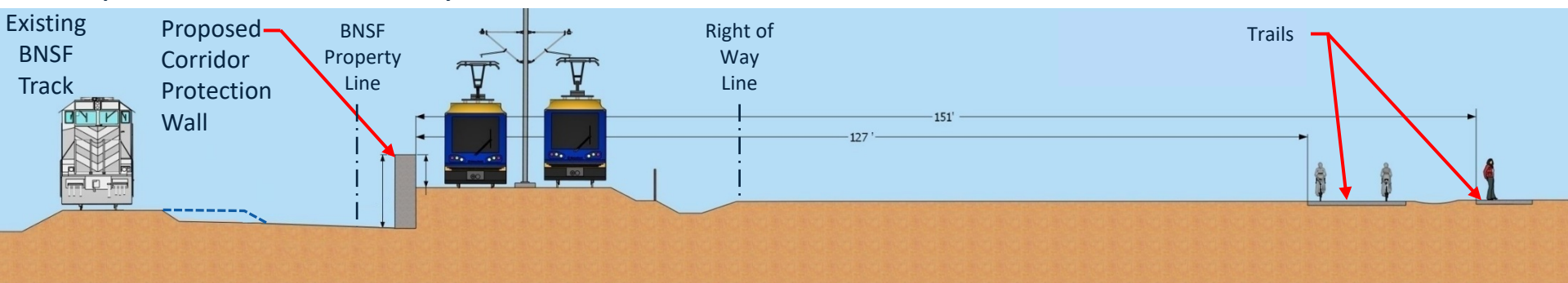
# Construction Challenges

- Both elements are major projects by themselves and have a significant impact on the project's cost and schedule
- Next steps:
  - Corridor Protection Wall
    - Continue construction
  - Kenilworth Tunnel
    - Complete change order processes
      - Grouting sheet separation: Completed
      - Secant wall
      - Sheet installation delay
      - Tunnel construction re-sequencing
  - Update project schedule
    - Determine impacts to Civil, Systems & SCADA contracts
    - Reach agreement on schedule and associated costs
    - Complete change order process to update schedule

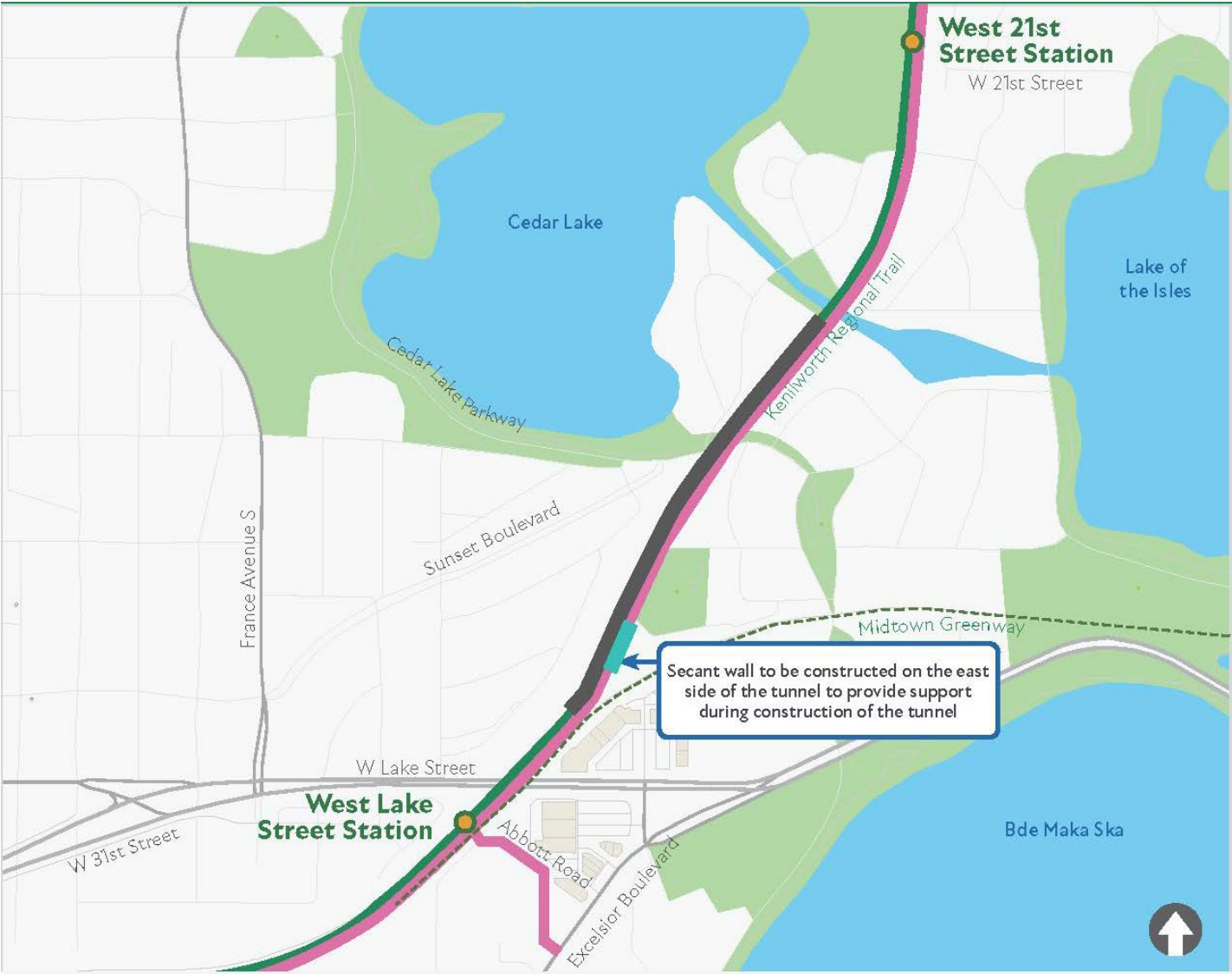
# Corridor Protection Wall



Example of section near Bryn Mawr Meadows



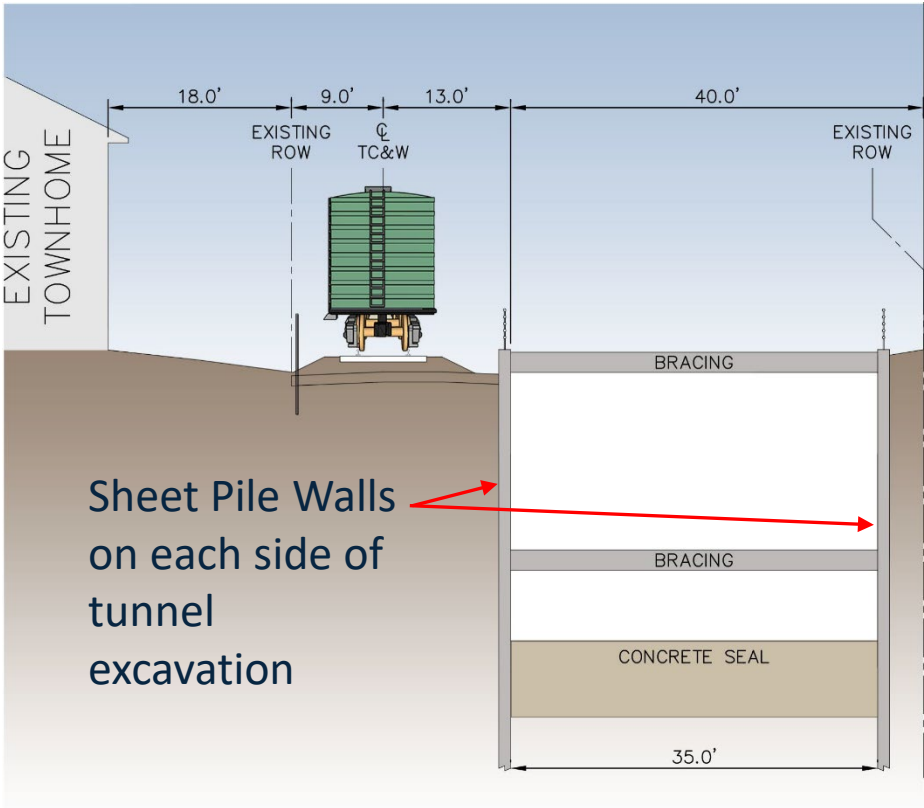
# Secant Pile Wall



- LRT Station
- LRT Alignment
- Truck Hauling
- Tunnel
- Secant Wall

# Kenilworth Tunnel Construction

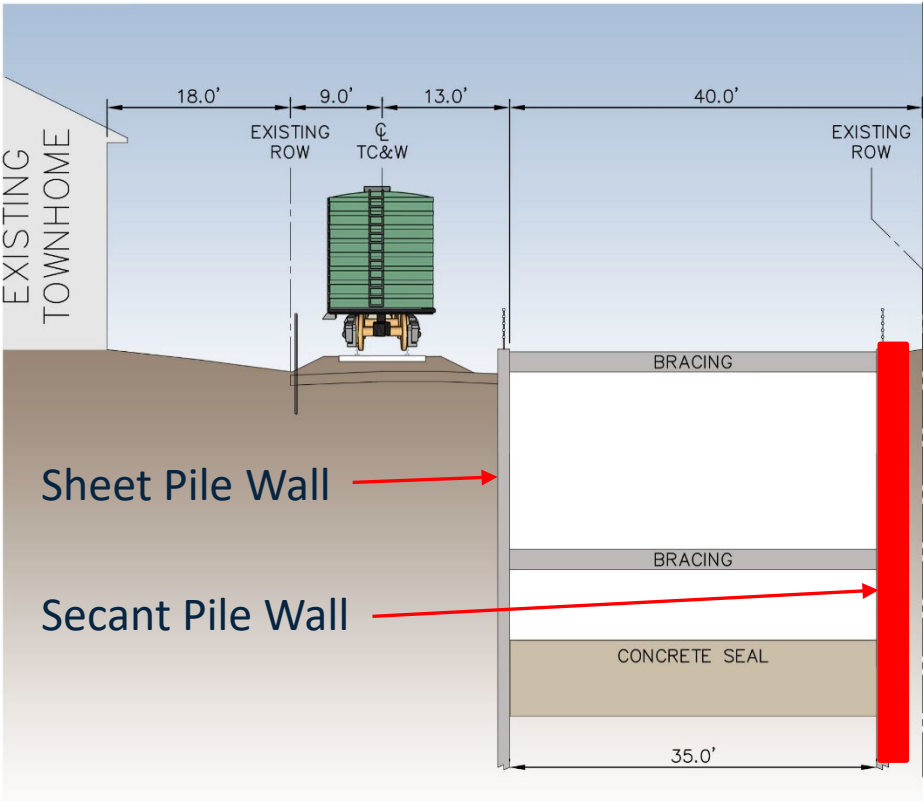
Original Plan



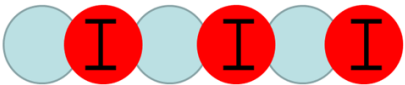
Sheet Pile Wall in Plan View



Modified Plan at Cedar Isles Condominium and Parking Ramp

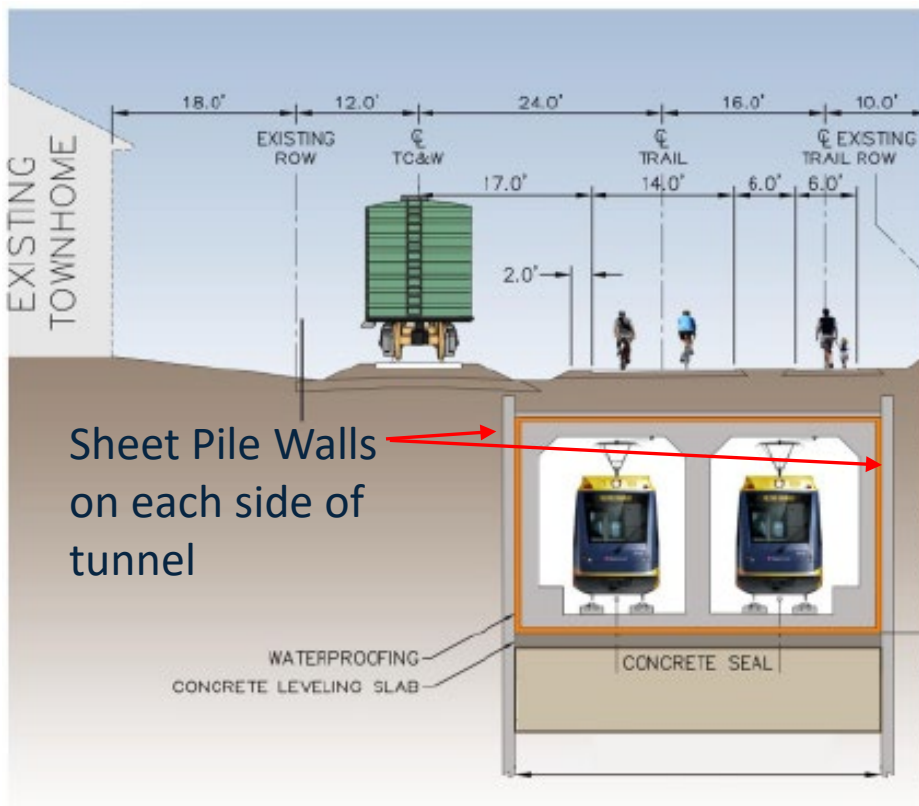


Secant Pile Wall in Plan View

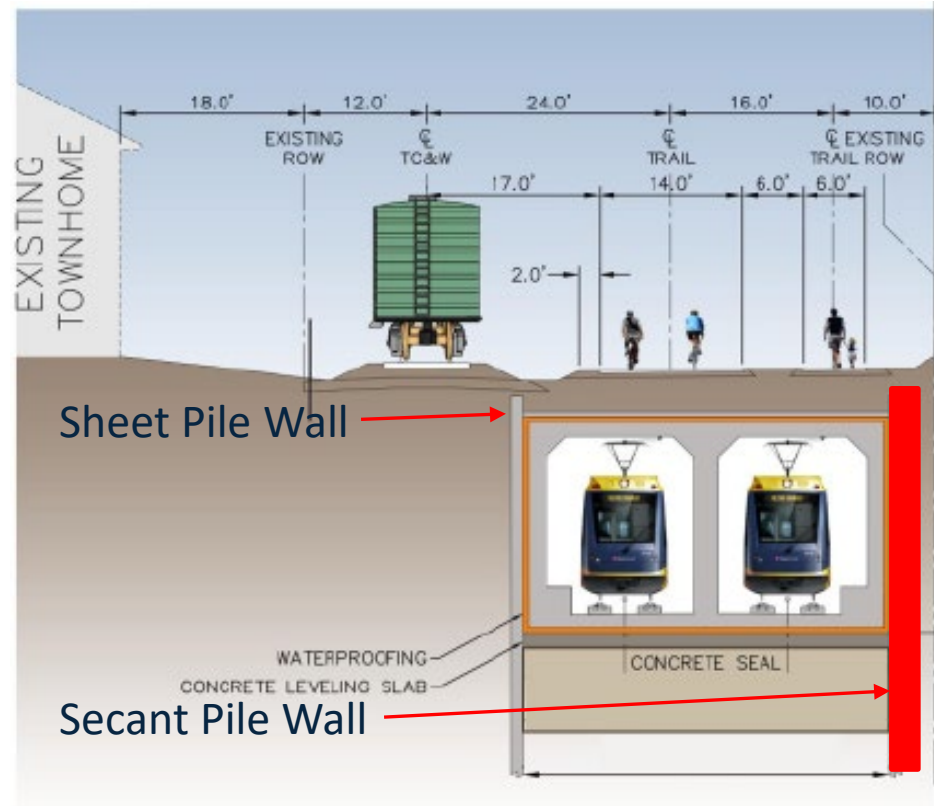


# Kenilworth Tunnel Construction

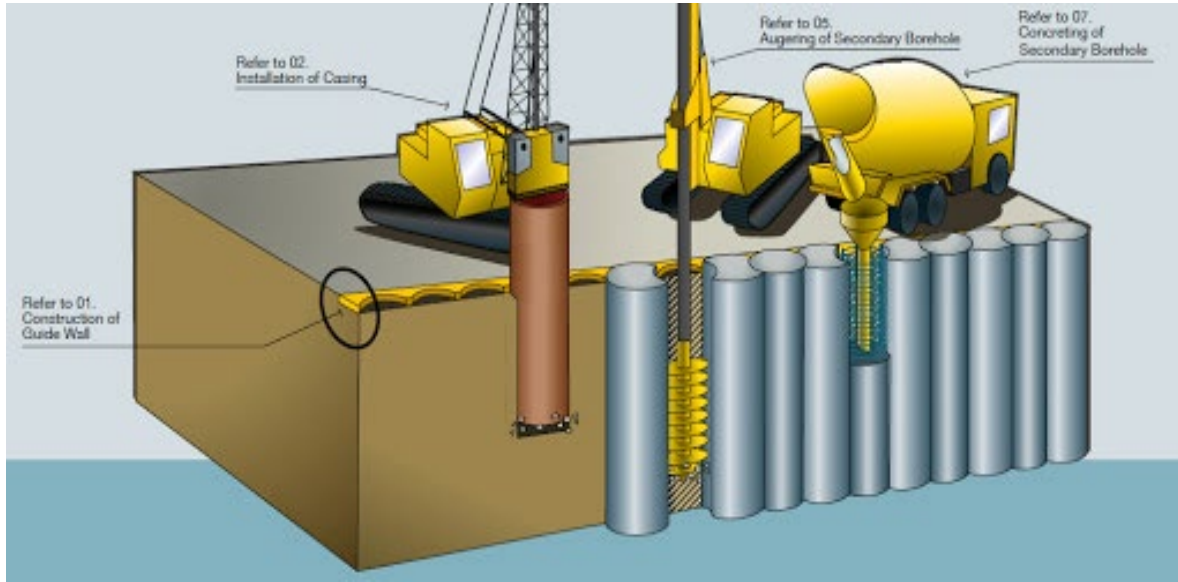
Original Plan



Modified Plan at Cedar Isles Condominium and Parking Ramp



# Example of Secant Wall Construction



# 2021 Drone Tour Video

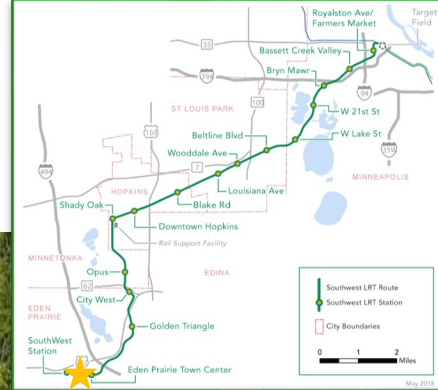


[https://www.youtube.com/watch?v=0rTsxhbmEtc&ab\\_channel=MetropolitanCouncil](https://www.youtube.com/watch?v=0rTsxhbmEtc&ab_channel=MetropolitanCouncil)

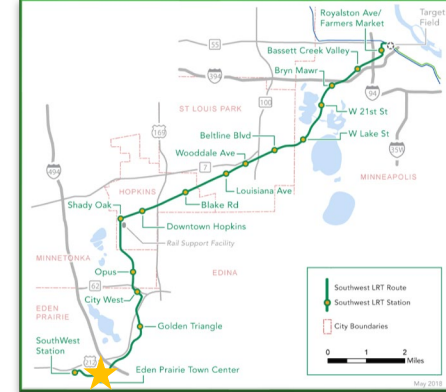
# SouthWest Station, Eden Prairie



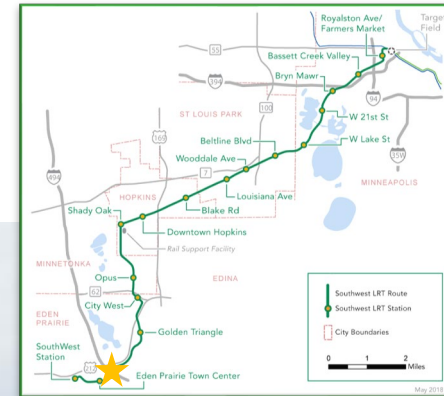
# Prairie Center Drive LRT Bridge, Eden Prairie



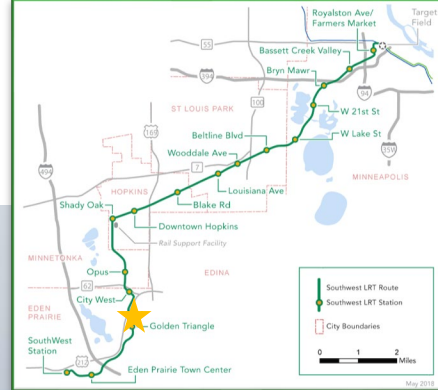
# Valley View Road LRT Bridge, Eden Prairie



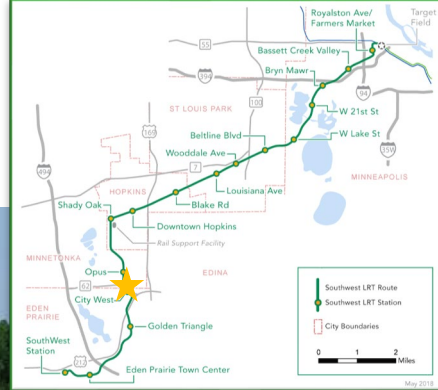
# Nine Mile Creek LRT Bridge, Eden Prairie



# Shady Oak Road/TH212 LRT Bridge, Eden Prairie



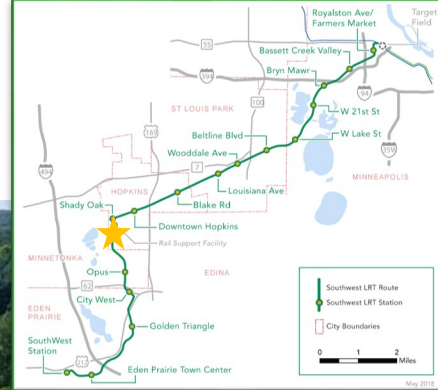
# TH 62 LRT Tunnel, Eden Prairie



# Smetana and Feltl Road Bridges, Minnetonka



# Minnetonka-Hopkins LRT Bridge



# Shady Oak Station, Hopkins



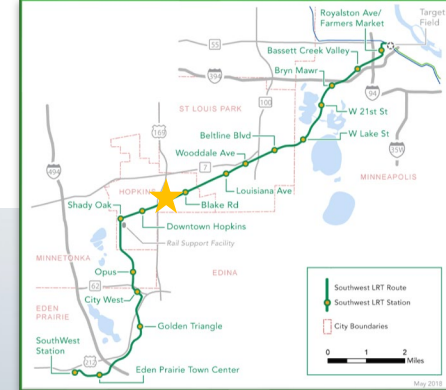
# First LRT Track Installation in Downtown Hopkins



# Cantilevered Form Traveler at Excelsior Boulevard LRT Bridge, Hopkins



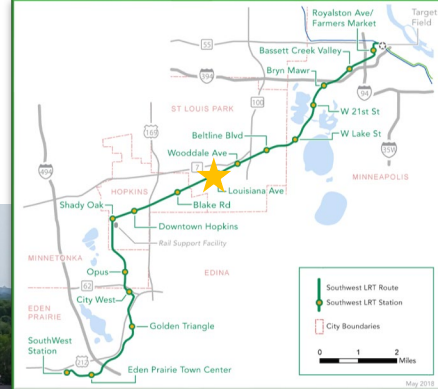
# Blake Road Pedestrian Underpass, Hopkins



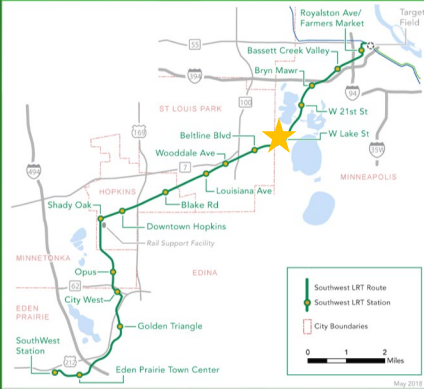
# Louisiana Avenue LRT Bridge, St. Louis Park



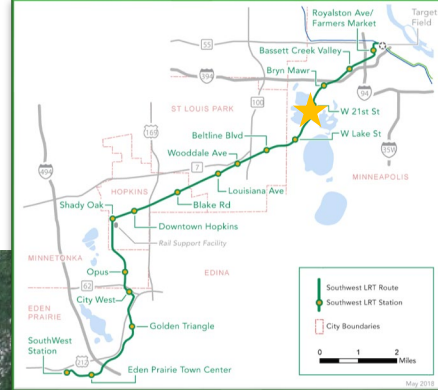
# Beltline Regional Trail Bridge



# Kenilworth LRT Tunnel, Minneapolis



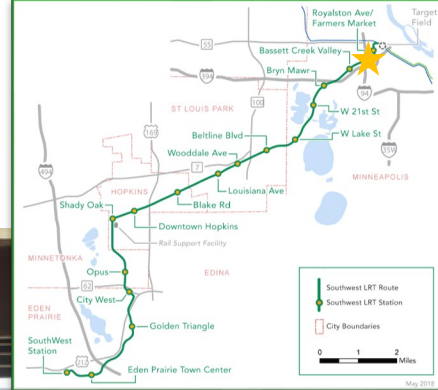
# Cedar Lake Channel LRT Bridge, Minneapolis



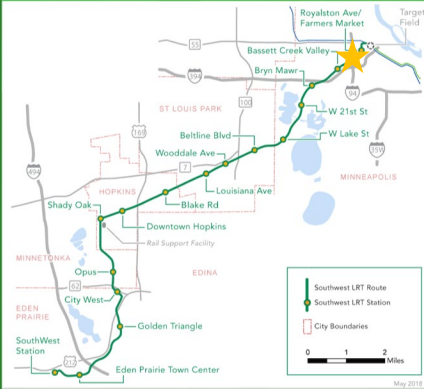
# West 21<sup>st</sup> Street Station, Minneapolis



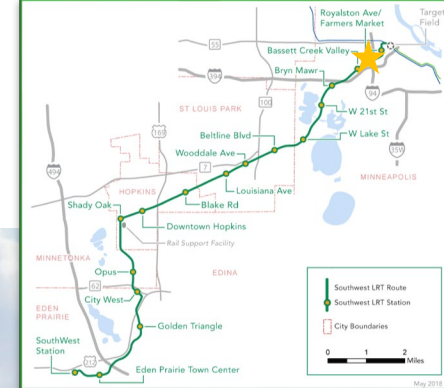
# Construction of Corridor Protection Wall, Minneapolis



# Glenwood Avenue LRT Bridge, Minneapolis



# LRT Bridge over 5<sup>th</sup> Avenue and 7<sup>th</sup> Street, Minneapolis



# TPSS 15B Delivery to Franklin O&M, Facility Time Lapse Video

[https://www.youtube.com/watch?v=u\\_jy7Iz8Nj4&ab\\_channel=MetropolitanCouncil](https://www.youtube.com/watch?v=u_jy7Iz8Nj4&ab_channel=MetropolitanCouncil)



# North Yard Modifications



# West Runner Tracks



# Light Rail Vehicles

# Light Rail Vehicle Contract

- Production progress
  - LRVs 301-321 have been shipped to Minneapolis
  - LRV's 322 and 323 have shipped to Minneapolis
  - LRV 324 and 325 are in testing
  - LRV 326 is in interior assembly
  - LRV 327 is in traction motor cables and electro-hydraulic unit system installation
  - Resident inspection continues at the Sacramento plant

# Light Rail Vehicle Contract

- Localized water test on the LRV 323 for delayed installation of left exterior camera



# Light Rail Vehicle Contract


- LRV 323 being cleaned pre-shipment



# Public Engagement

# Outreach Highlight

- Weekly Construction Update: 17,000+ subscribers
  - July issues featured: upcoming work highlights, August walking tours, and a drone video of Southwest's most impressive structures



## SOUTHWEST Green Line LRT Extension CONSTRUCTION

### Southwest LRT Construction Update, July 30, 2021

Web: [swlrt.org](http://swlrt.org)


Twitter: [@SouthwestLRT](https://twitter.com/SouthwestLRT)

Construction Hotline: 612-373-3933

August Construction Walking Tours

Walking tours along Southwest LRT are back! You can reserve a spot for an August walking tour in each of the corridor cities [here](#). Registration is required for the walking tours due to limited spaces on construction sites. We will provide hardhats and other personal protective wear. Please note, these tours are weather dependent.

### Weekly Construction Photo: Drone video tour of Southwest LRT's most impressive structures



Along the Southwest LRT corridor significant progress has been made on most of our structures and stations. To have a better idea of what the line will look like, check out this drone video that captures highlights from the 14.5-mile-long corridor and its impressive structures, like the Shady Oak/Hwy 212 LRT Bridge pictured here. Click the image to play the video.

# Three Rivers Park District Tour: May 21



# APWA Corridor Tour: August 5



# Outreach Highlight

- Hopkins Raspberry Festival



# More Information

Online:

[www.SWLRT.org](http://www.SWLRT.org)

Email:

[SWLRT@metrotransit.org](mailto:SWLRT@metrotransit.org)

Twitter:

[@southwestlrt](https://twitter.com/southwestlrt)

